

IMPORTANT NOTES: Read First

(A) Use liquid thread lock (such as Loctite®) with all threaded hardware. **Important:** Liquid thread lock (prior to curing) helps to eliminate the common problem of "thread seizure" in stainless steel hardware by serving as a lubricant during assembly.

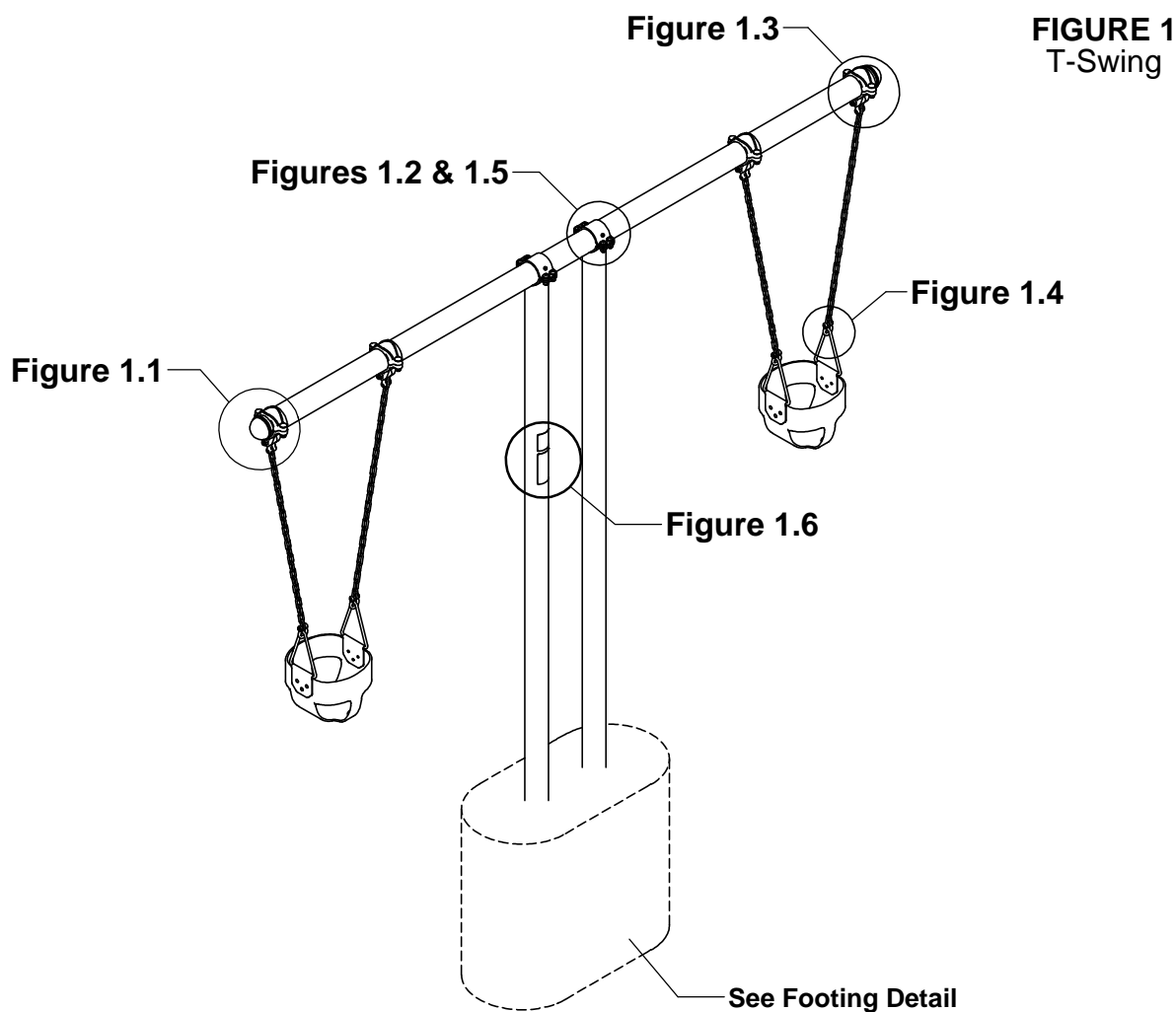
(B) Do not pour concrete until the equipment is completely assembled, leveled and plumbed. Concrete must be allowed to cure completely before using the equipment (at least 72 hours).

(C) Refer to CPSC for appropriate swing spacing.

(D) Chain length should be adjusted (trimmed) so the underside of the Bucket Seat is no less than 24" from Finish Grade. See Recommended Swing Seat Heights.

(E) All bolt threads protruding beyond the nut must be cut and de-burred until end is smooth to the touch. Sharp edges and/or points of any kind must be eliminated. A maximum of two threads may be exposed beyond the end of the nut.

(F) An appropriate energy absorbing safety surface is required under and around all playground equipment. Loose fill protective surfacing is shown only as an example for the purpose of this assembly instruction. Other surfacing material may vary in thickness and/or compression depths. See free publication - The Handbook for Public Playground Safety, Publication #325 at www.cpsc.gov for the surfacing appropriate for the fall height of the equipment or consult your surfacing supply representative.



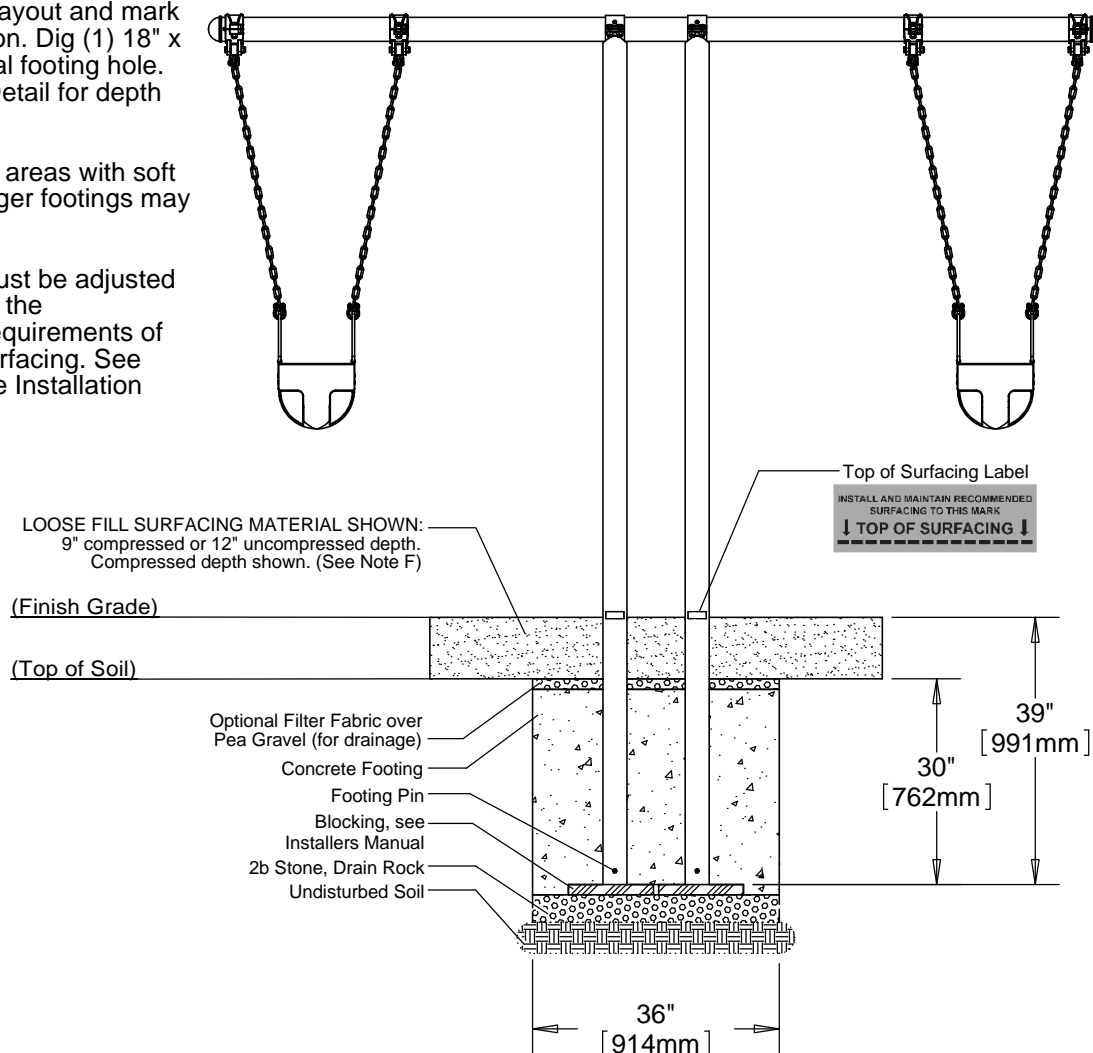
Step 1

Refer to Footing Layout and mark footing hole location. Dig (1) 18" x 36" x 30" deep oval footing hole. Refer to Footing Detail for depth and details.

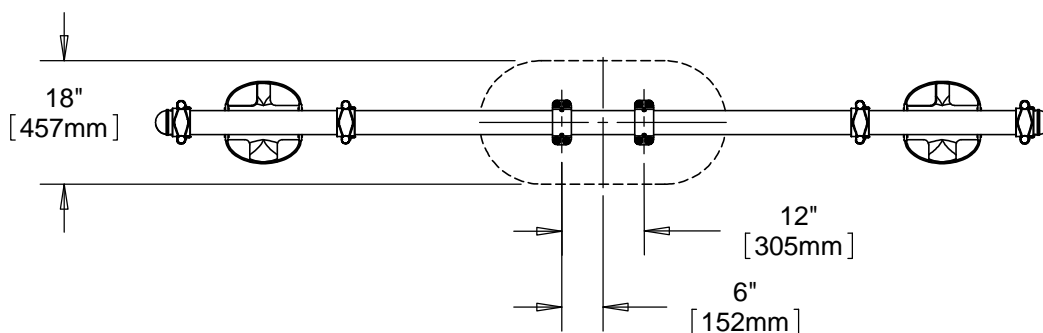
IMPORTANT: For areas with soft soil conditions, larger footings may be required.

* Footing depth must be adjusted to compensate for the depth/thickness requirements of selected safety surfacing. See Section 06.1 of the Installation Manual.

Footing Detail



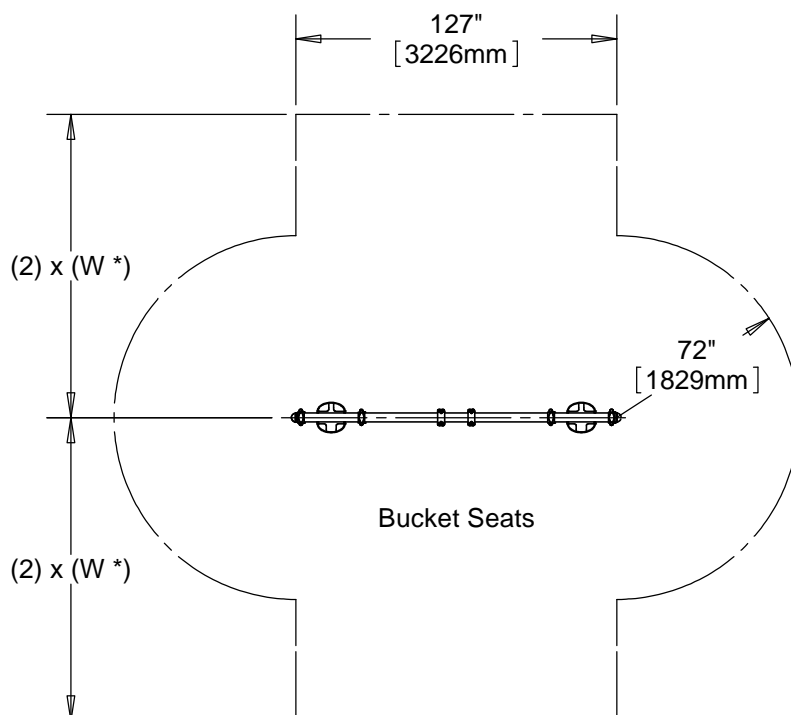
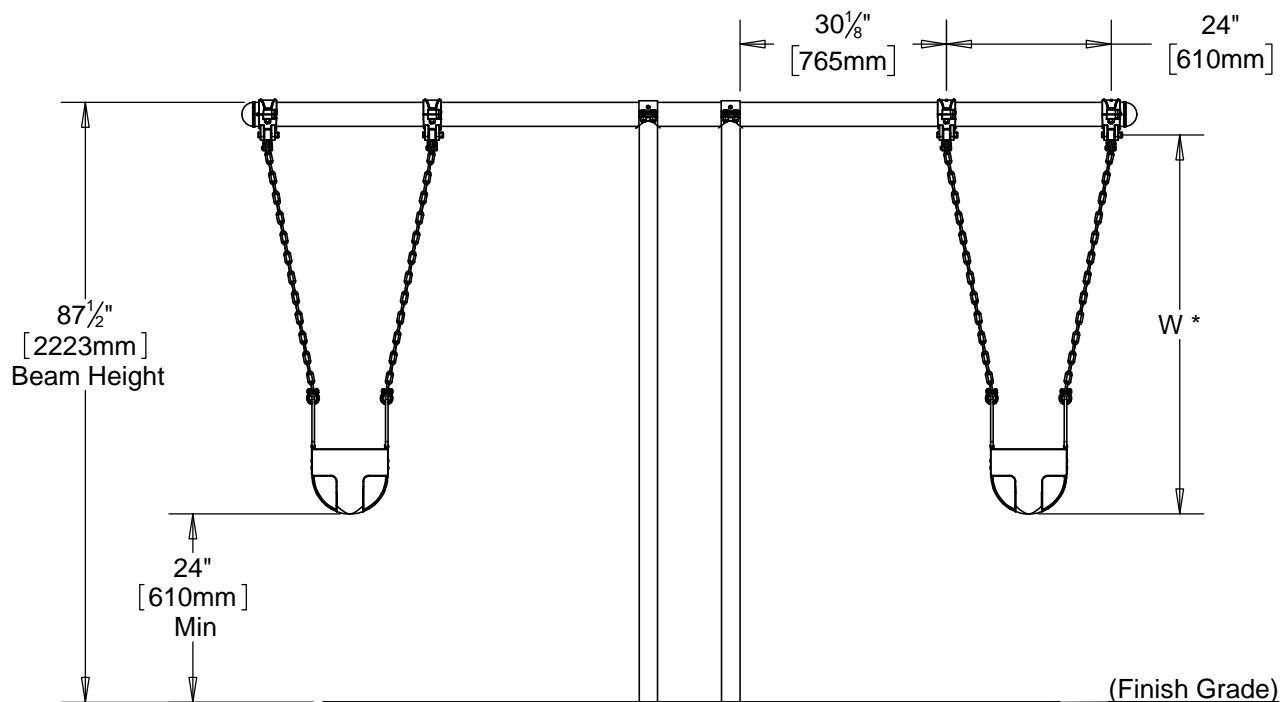
Top View - Footing Layout



T-SWING ASSEMBLY INSTALLATION INSTRUCTIONS

PC-2190
Page 3 of 6

Recommended Swing Seat Heights (See Notes C & E)



Use Zone

NOTE: Configuration shown is for illustration of use zones. Your configuration may vary slightly. Refer to CPSC for corresponding single-axis swing use zones.

IMPORTANT: Front to Rear Use Zones cannot overlap while End Use Zones may overlap other swing End Use Zones.

NOTE: Use zones are in conformance with the CPSC but not the CSA. If installing in Canada please refer to CSA Z614.

* W = the vertical distance from the swing pivot point to the top of the sitting surface.



Manufactured by Krauss Craft, Inc.
www.playcraftsystems.com

For Customer Service Call
800.333.8519 (U.S.A.) or
541.955.9199 (International)

Rev G
7/1/2024

Step 2 (Factory Assembled)

Attach Dome Post Caps to T-Swing Beam as shown in Figure 1.1.

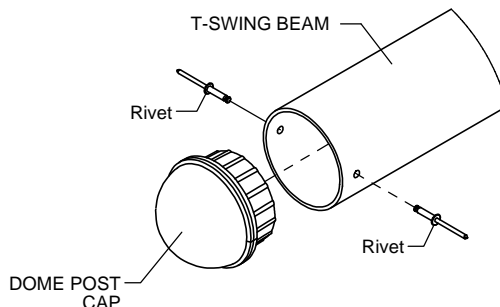


Figure 1.1

Step 3

Install Footing Pins into T-Swing Posts as shown in Figure 2. (See Note A)

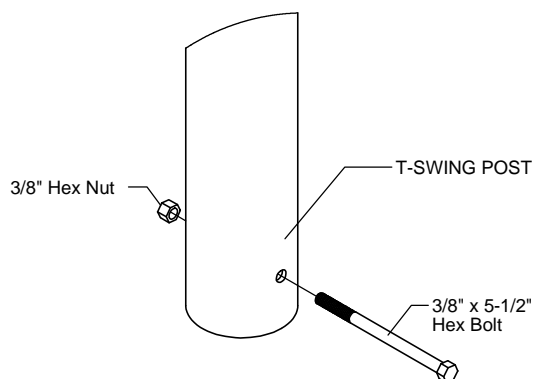


FIGURE 2

Step 4

Place T-Swing Posts into footing hole. Refer to Recommended Swing Seat Heights, locate and attach T-Swing Beam to Posts as shown in Figure 1.2. (See Notes A & E)

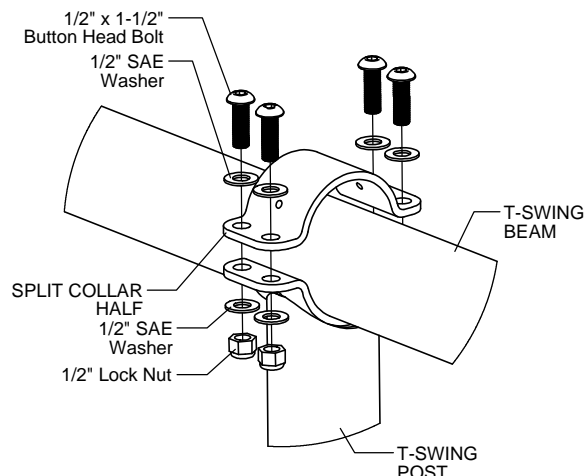


Figure 1.2

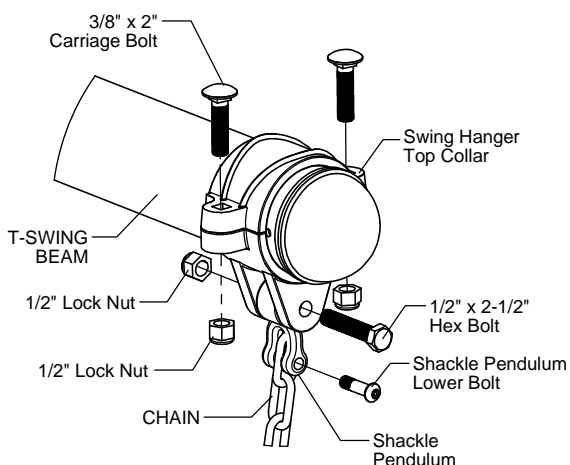


Figure 1.3

Step 5

Refer to Recommended Swing Seat Heights, locate and attach Swing Hangers to T-Swing Beam as shown in Figure 1.3. (See Notes A, C & E)

Step 6

Attach Bucket Seats to Chains as shown in Figure 1.4.
(See Notes A & D)

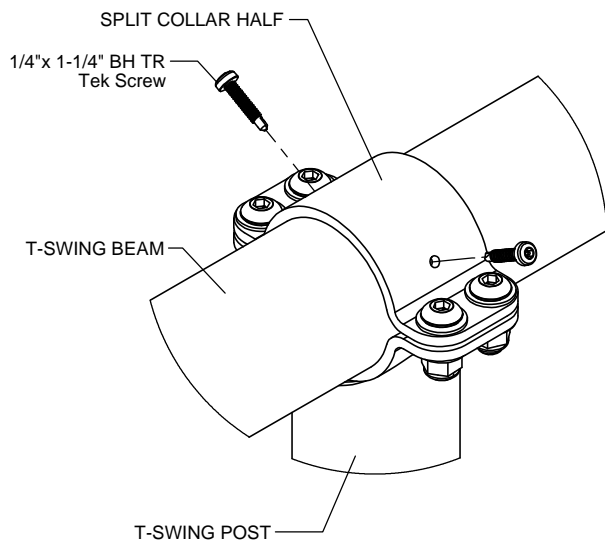


Figure 1.5

Step 9

Apply Warning and 2 - 5 Age Appropriate Label to T-Swing Post where visible to users as shown in Figure 1.6. (Dimension shown indicates suggested placement)

Step 10

Plumb and level entire component. Pour concrete into footing hole. Allow at least 72 hours to cure before using this equipment. (See Note B)

Step 11

Affix "Top of Surfacing" labels to base of posts indicating the top of minimum required protective surfacing depth. (See Note F)

Step 12

Place required protective surfacing under and around T-Swing Assembly. (See Note F)

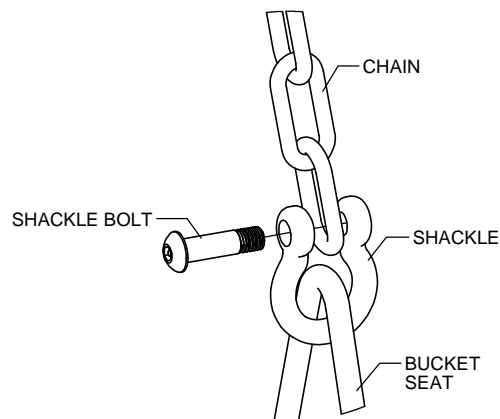


Figure 1.4

Step 7

Fully tighten all fasteners according to the "TIGHTENING TORQUE FOR HARDWARE" section of the Installation Manual.

Step 8

Secure Split Collars to T-Swing Beam as shown in Figure 1.5. (See Note C)

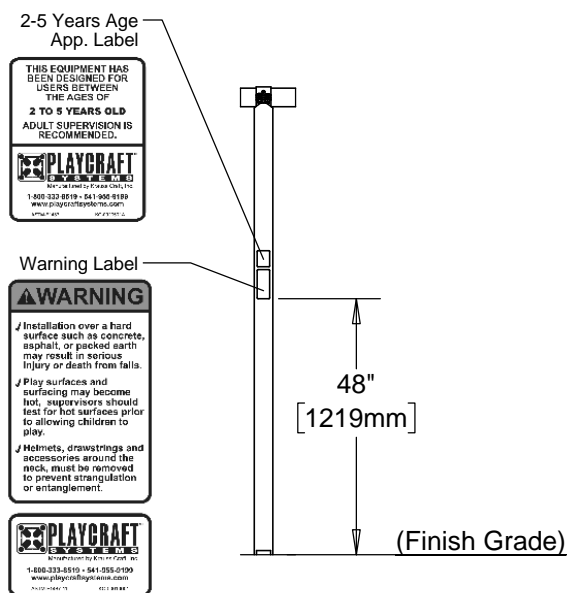


Figure 1.6

T-SWING ASSEMBLY INSTALLATION INSTRUCTIONS

PC-2190
Page 6 of 6

Parts List

Part #	DESCRIPTION	QTY.
BG-8133	Split Collar Half R3.5	2
FS-PC2190	T-Swing Post	2
HE-0008-39	4 Ft. Swing Chain	4
HE-31101	Bucket Seat Toddler	2
372012	Warning Label 2-5 Years	1
372016	Warning Label	1
372017	Top of Surfacing Label	2
451161-SS	Swing Shackle - Stainless Steel	4
471011	3 1/2" Swing Hanger w/ Shackle Pendulum	4
9105072	Bolt Button Head 1/2" x 1-1/2"	8
9123231	Bolt Hex 3/8" x 5-1/2"	2
9271062-TR	Screw Tek 1/4" x 1-1/4" BH TR	4
9345002	Washer Flat SAE 1/2"	16
9415132	Nut Lock 1/2"	8
9483602	Nut Hex 3/8"	2

Assembled Parts List

Part #	DESCRIPTION	QTY.
GG-8135	Post Cap R3.5 Dome	2
LG-0003	T-Swing Beam	1
9610012	Rivet 3/16" x 1/2" to 3/4" Pop	4

Specifications

BUCKET SEATS:

Shall be molded from UV-stabilized flexible rubber compound with slash proof, reinforced metal inserts.

POST CAP R3.5 DOME:

Shall be precision die-cast from a high-strength aluminum alloy. The Post Cap R3.5 Dome shall have a multi-stage baked-on powder coat finish

SPLIT COLLAR HALF:

Shall be precision laser-cut from 1/4" thick rolled sheet steel. The Split Collar Half shall have a multi-stage baked-on powder coat finish.

SWING CHAIN:

Shall be 7mm (1/4") PC Grade 30 chain with a silver shield cold galvanized finish.

SWING HANGER:

Shall be cast steel. The Swing Hanger shall be galvanized to resist rust and corrosion.

T-SWING BEAM:

Shall be fabricated using 3.5" O.D. 11 gauge galvanized steel tubing. The T-Swing Beam shall have a multi-stage baked-on powder coat finish.

T-SWING POST:

Shall be fabricated using 3.5" O.D. 8 gauge steel tubing with welded Split Collar. The T-Swing Post shall have a multi-stage baked-on powder coat finish.

HARDWARE:

Shall be stainless steel, zinc/nickel plated or galvanized as required to resist rust and corrosion.

Maintenance

Periodically tighten all screws, bolts and nuts. A periodic inspection of all parts is necessary. If a part is broken or worn, replace immediately. For general maintenance please refer to our Playground Maintenance Manual.



Manufactured by Krauss Craft, Inc.
www.playcraftsystems.com

For Customer Service Call
800.333.8519 (U.S.A.) or
541.955.9199 (International)

Rev G
7/1/2024