

Plan View

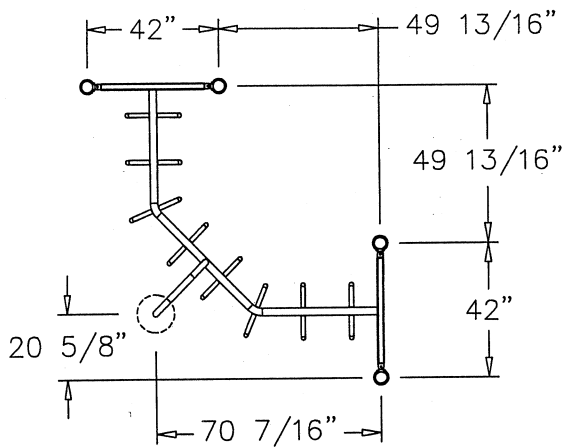


Figure 2

Assembly View

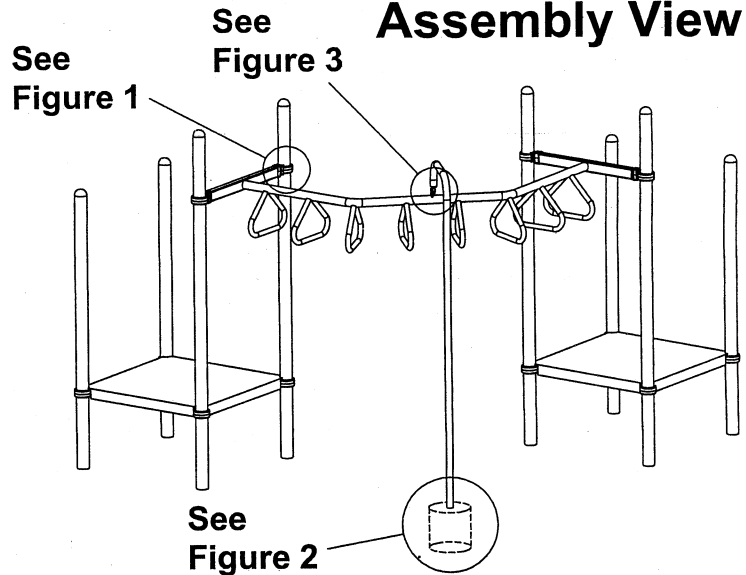
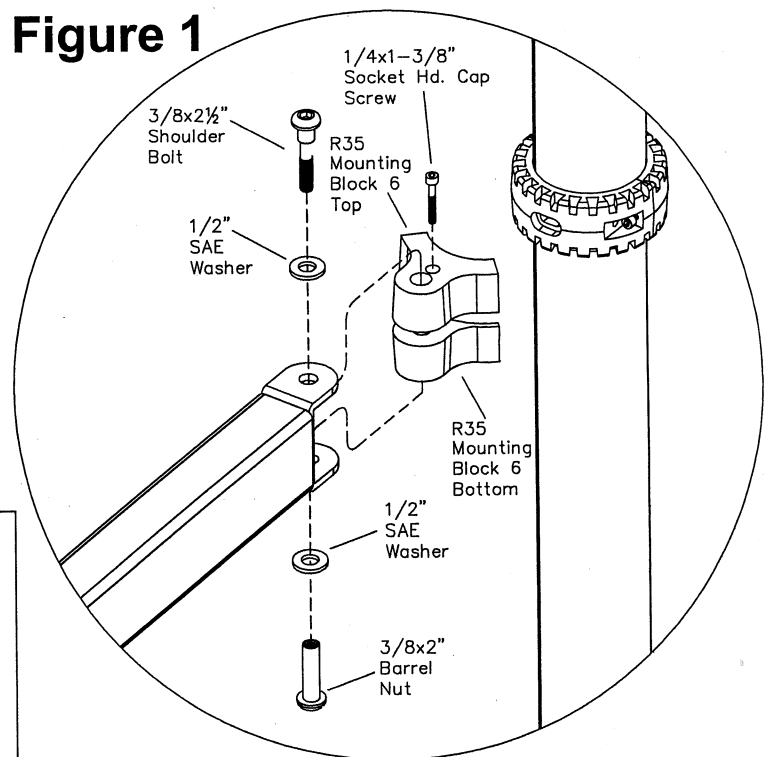
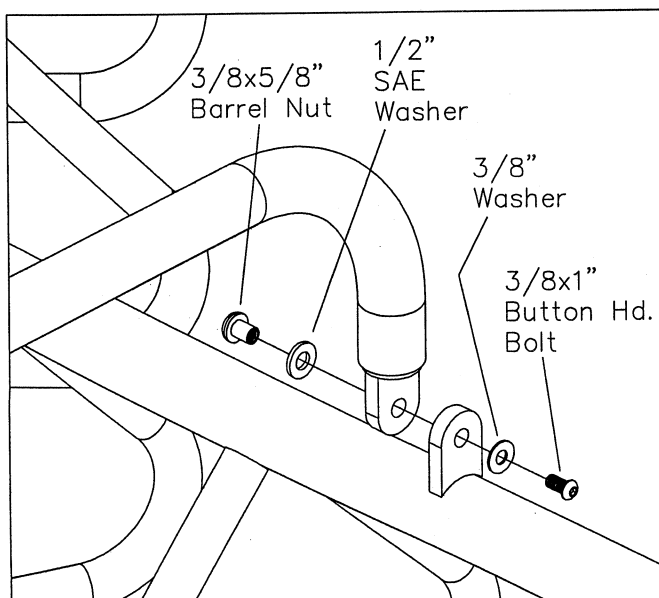
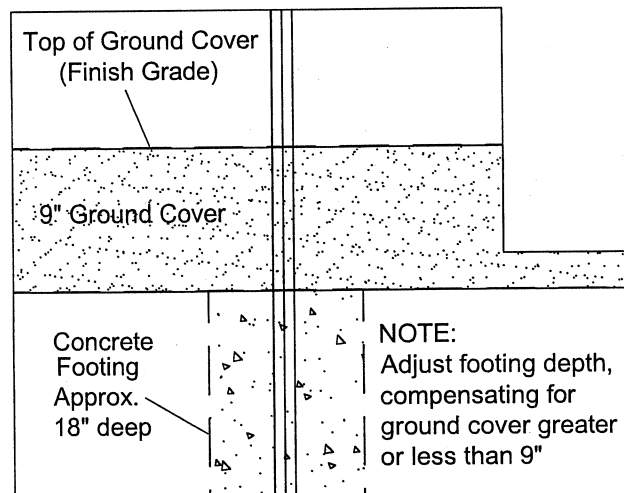


Figure 1



WARNING! On Overhead Events, use Mounting Block 6 ONLY!

Figure 3



Parts List

QTY.	DESCRIPTION	PART #
1	Loop Traverse 90 Deg.	KC0492
1	Loop Traverse 90 Deg. Support	FS-1411-90A
4	R35 Mounting Block 6 Top	8125
4	R35 Mounting Block 6 Bottom	8127
4	3/8 x 2" Barrel Nuts	9443092-TR
9	1/2" SAE Washers	9345002
4	3/8 x 2½" Shoulder Bolts	9143111-TR
4	1/4 x 1-3/8" Soc. Hd. Cap Screw	9281062-5
1	3/8 x 5/8" Barrel Nut	9443022-TR
1	3/8" Washer	9333002
1	3/8 x 1" Button Hd. Bolt	9103052-TR

Specifications

LOOP TRAVERSE 90 DEG:

Center support beam shall be 2" Rnd. T.S. 10 Gage min. welded to 2" x 3" cross members designed to attach complete unit to upright posts. All steel parts are galvanized and / or powder coated as specified.

LOOP TRAVERSE 90 DEG. SUPPORT:

Shall be fabricated of 1-1/2" Rnd. T.S. 11 Gage min. To be finished with a baked on powder coating.

MOUNTING BLOCKS:

Shall be two-part and precision die-cast from a high strength aluminum alloy. Finished with a baked on powder coating.

HARDWARE:

Shall be zinc/nickel plated, galvanized or stainless steel as required to resist rust and corrosion.

Maintenance

Periodically tighten all screws, bolts and nuts.
A periodic inspection of all parts is necessary.
If a part is broken or worn, replace immediately.

Installation

Notes:

(A) The height of the Loop (at grasping point) from the top of ground cover varies by age group.
Ages 2-5: Max. Height is 60" from top of ground cover
Ages 5-12: Max. Height is 84" from top of ground cover.

Step 1.

Locate and mark the position of all collars on each post. Refer to page R3.5-09 for collar set assembly.

Step 2.

Place both Mounting Blocks into place on the Post collar and secure with Socket Head Cap Screw. Attach Loop Traverse to Mounting Blocks as shown in Figure 1.

Step 3.

Check to ensure that the Support Beam has been installed to the correct height (see Note A).

Step 4.

Attach Loop Traverse Support to Loop Traverse as shown in Figure 2.

Step 5.

Dig footing hole for Support and cement into place. See Figure 3 for details.

Step 6.

Fully tighten all fasteners.