

IMPORTANT NOTES: Read First

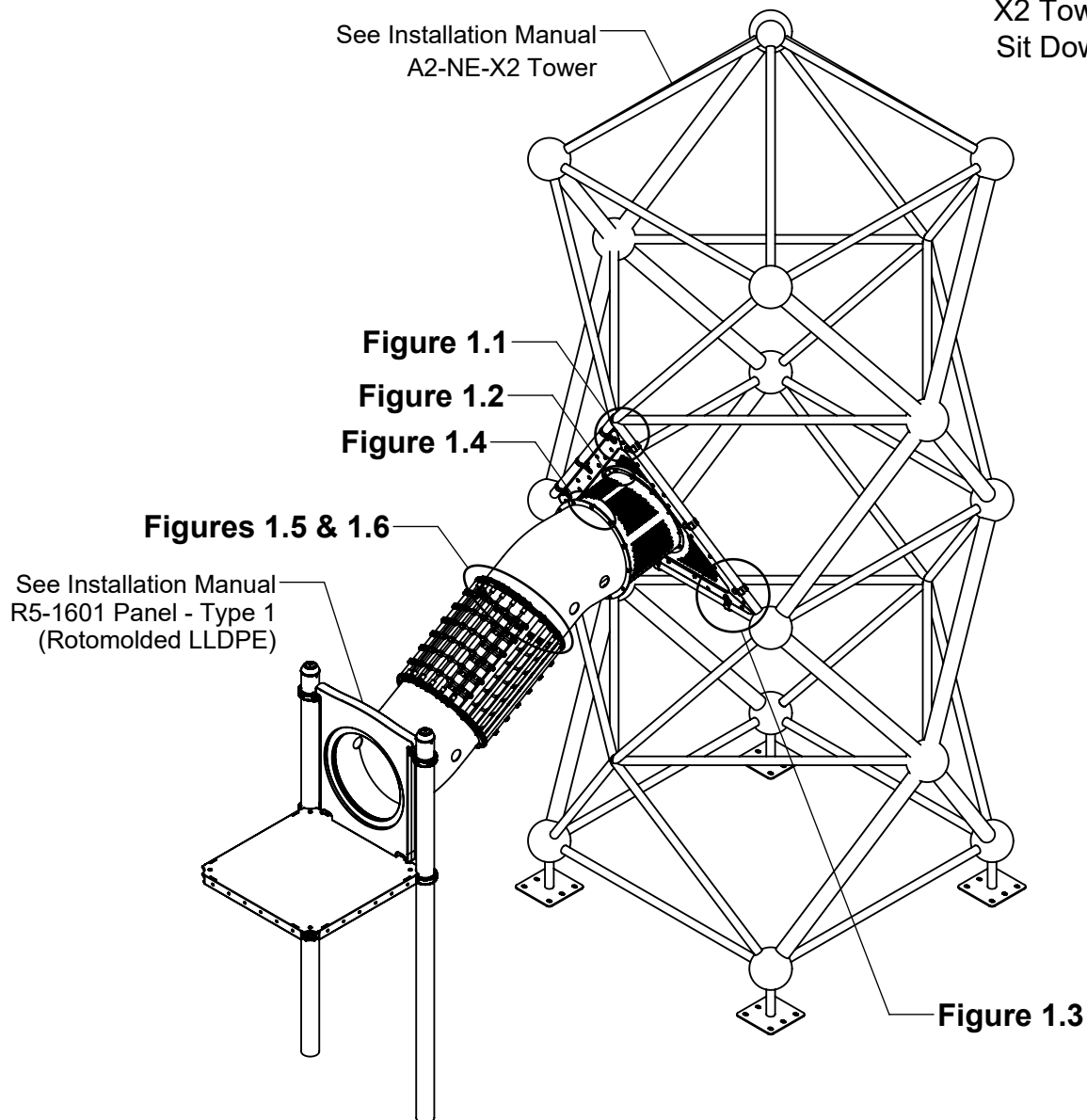
(A) Use liquid thread lock (such as Loctite®) with all threaded hardware. **Important:** Liquid thread lock (prior to curing) helps to eliminate the common problem of "thread seizure" in stainless steel hardware by serving as a lubricant during assembly.

(B) Refer to Installation Manual for A2-NE-X2 Tower and R5-1601 Panel - Type 1 (Rotomolded LLDPE) installation instructions.

(C) An appropriate energy absorbing safety surface is required under and around all playground equipment. Loose fill protective surfacing is shown only as an example for the purpose of this assembly instruction. Other surfacing material may vary in thickness and/or compression depths. See free publication - The Handbook for Public Playground Safety, Publication #325 at www.cpsc.gov for the surfacing appropriate for the fall height of the equipment or consult your surfacing supply representative.

FIGURE 1

X2 Tower Slide
Sit Down Entry



Top View - Footing Layout

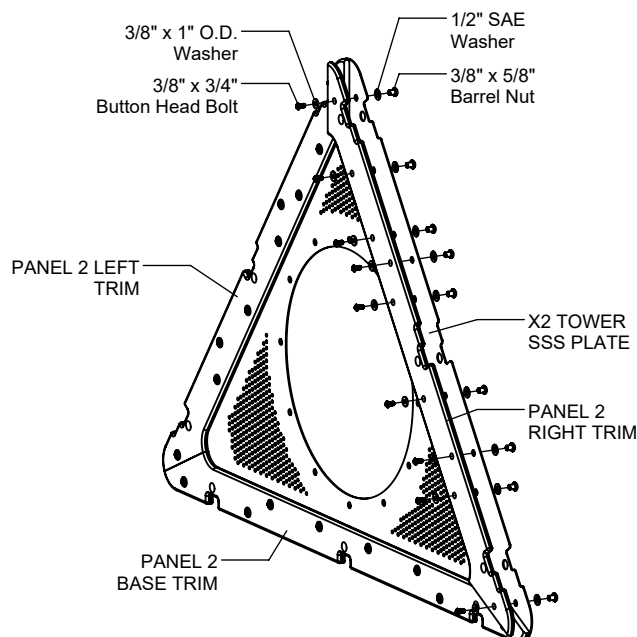
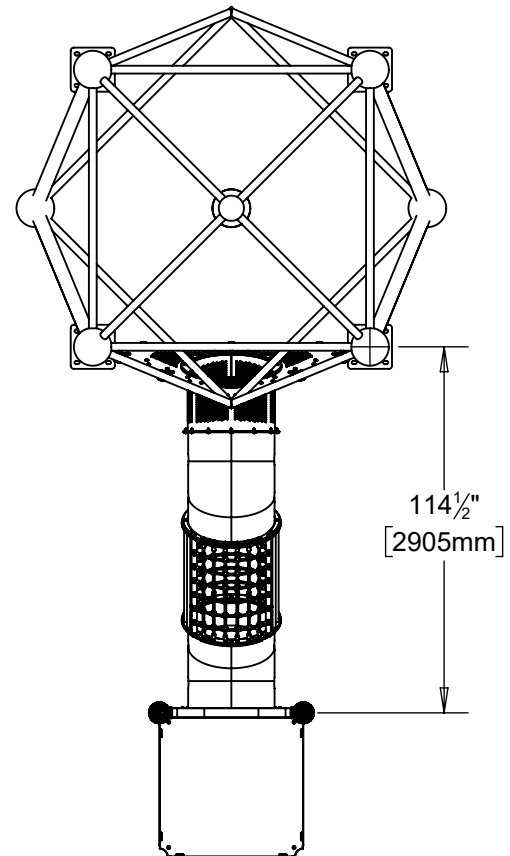


Figure 1.1

Step 1 (Factory Assembled)

Attach Trim to X2 Tower SSS Plate as shown in Figure 1.1. (See Note A)

Step 2

Attach X2 Transition Extension and Panel Stiffener to X2 Tower SSS Plate as shown in Figure 1.2.
(See Note A)

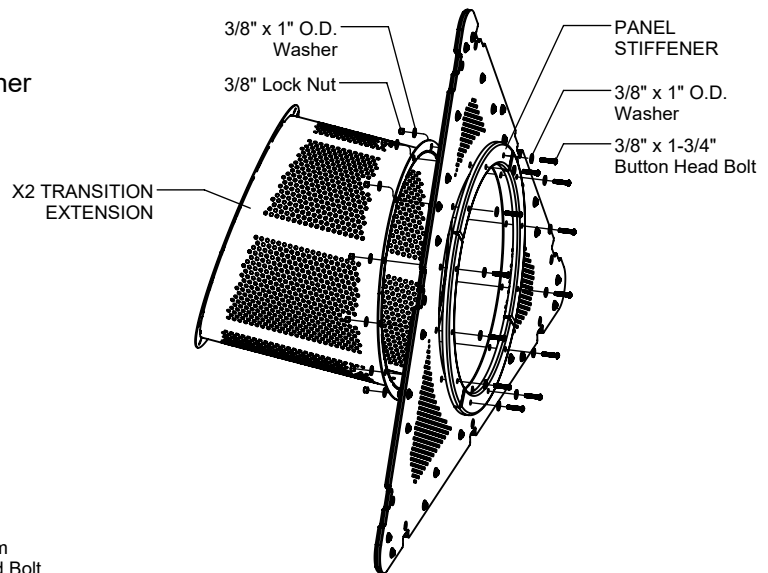


Figure 1.2

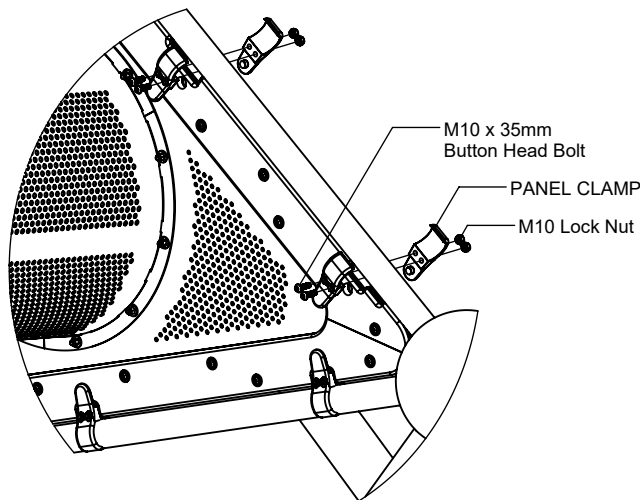


Figure 1.3

Step 3

Attach X2 Tower SSS Plate to Tower as shown in Figure 1.3. (See Note A)

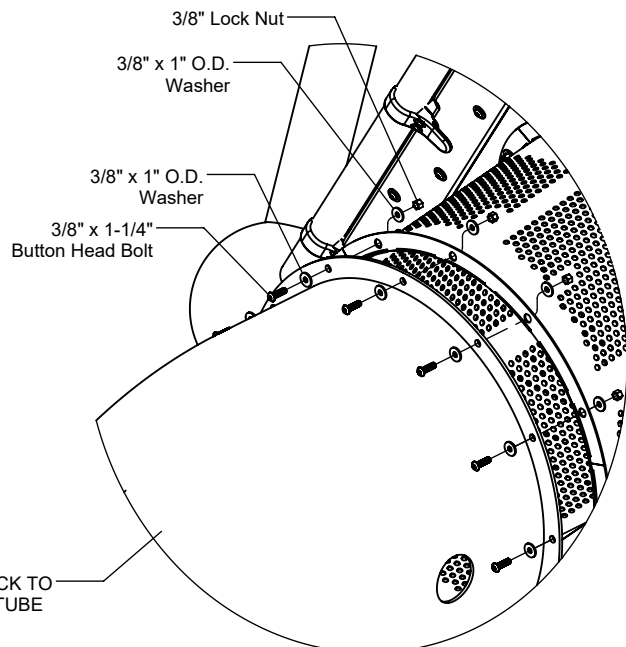


Figure 1.4

Step 4

Attach Tube Elbow to Transition Tube as shown in Figure 1.4. (See Note A)

Step 5

Attach Tube Elbow to Roto Panel Round as shown in Figure 2. (See Note A)

Step 6

Attach Roto Panel to Deck Assembly as described in R5-1601 Panel - Type 1 (Rotomolded LLDPE) installation instructions. (See Note B)

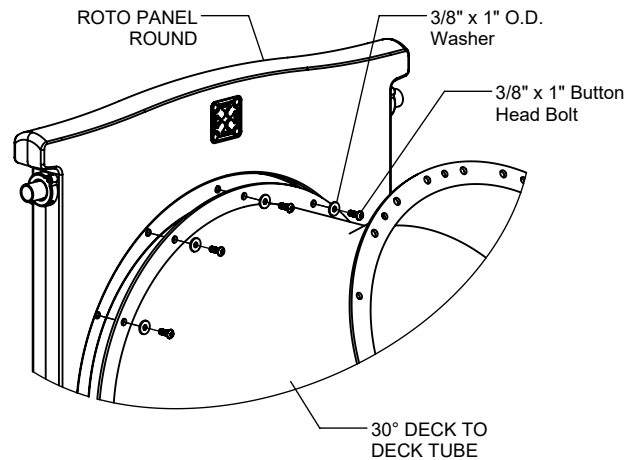


FIGURE 2

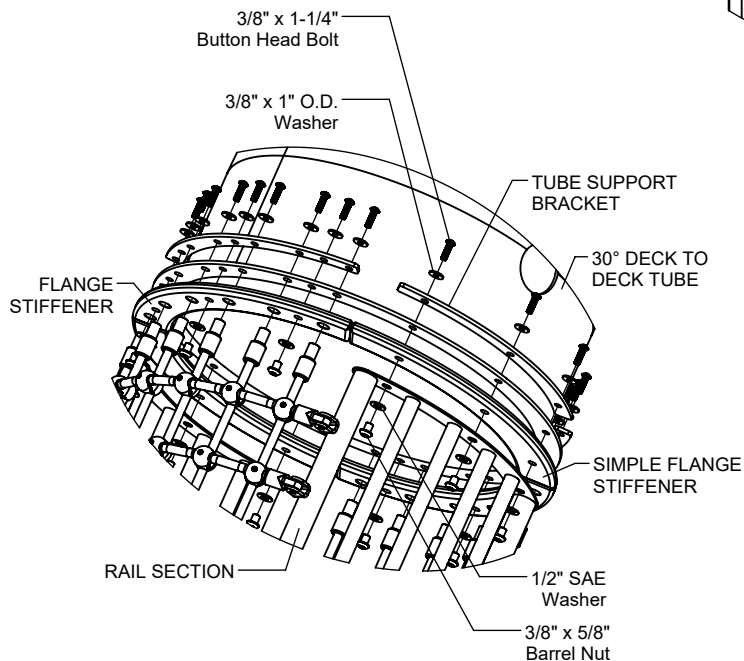


Figure 1.5

Step 7

Attach Crawl-Netix Section to Tube Elbow as shown in Figure 1.5. (See Note A)

NOTE: 2 Places

Step 8

Attach Climber Net to Rail Section as shown in Figure 1.6. (See Note A)

Step 9

Fully tighten all fasteners according to the "TIGHTENING TORQUE FOR HARDWARE" section of the Installation Manual.

Step 10

Place required protective surfacing under and around X2 Crawl-Netix Transition. (See Note C)

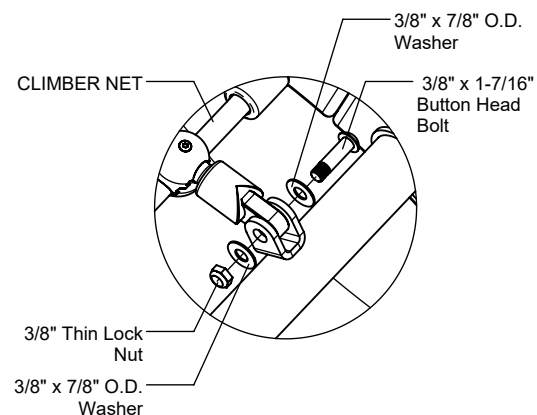


Figure 1.6

X2 CRAWL-NETIX TRANSITION INSTALLATION INSTRUCTIONS

R5-1535-XTD
Page 5 of 5

Parts List

| Part # | DESCRIPTION | QTY |
|---------------|---|-----|
| AE-0964 | Crawl-Netix Climber DTG Net Plate | 4 |
| AE-4135 | Tube Support Plate | 4 |
| CE-1251 | X2 Tower Tube Extension 17 Degree | 1 |
| DE-1503-DTD | 30 Deg MM - Crawl-Netix Deck to Deck | 2 |
| EE-0618 | Crawl-Netix Climber Flange Stiffener | 4 |
| EE-0618-SMP | Crawl-Netix Climber Simple Flange Stiffener | 4 |
| EG-8252-STF | R3.5 Tube Panel Stiffener | 4 |
| FS-1536-34375 | Crawl-Netix Climber Rail Section 34.375 | 2 |
| HE-0128-34375 | Crawl-Netix Climber Net Section 34.375 | 2 |
| S-1600-R5 | Panel Round R5 | 1 |
| 9103052-TR | Bolt Button Head 3/8" x 1" | 12 |
| 9103062-TR | Bolt Button Head 3/8" x 1-1/4" | 60 |
| 9103082-TR | Bolt Button Head 3/8" x 1-3/4" | 12 |
| 9103200-TR | Bolt Button Head 3/8" x 1-7/16" | 24 |
| 9333002 | Washer Flat 3/8" x 1" O.D. x .100" thick | 108 |
| 9333042 | Washer Flat 3/8" x 7/8" O.D. | 48 |
| 9345002 | Washer Flat SAE 1/2" | 24 |
| 9413002 | Nut Lock 3/8" | 24 |
| 9423002 | Nut Lock Thin 3/8" | 24 |
| 9443022-TR | Nut Barrel 3/8" x 5/8" BH | 24 |

Assembled Parts List

| PART # | DESCRIPTION | QTY |
|------------|--|-----|
| AE-1213 | X2 Tower SSS Plate (Panel 2) | 1 |
| EE-0693-B | X2 SSS Base HDPE (Panel 2) | 1 |
| EE-0693-L | X2 SSS Left HDPE (Panel 2) | 1 |
| EE-0693-R | X2 SSS Right HDPE (Panel 2) | 1 |
| 9103032-TR | Bolt Button Head 3/8" x 3/4" | 26 |
| 9333002 | Washer Flat 3/8" x 1" O.D. x .100" thick | 26 |
| 9345002 | Washer Flat SAE 1/2" | 26 |
| 9443022-TR | Nut Barrel 3/8" x 5/8" BH | 26 |

Specifications

SUPPORT PLATES:

Shall be fabricated from 1/4" sheet steel and will have a multi-stage baked-on powder coat finish.

X2 TOWER SSS PLATE (PANEL 2) & X2 TOWER TUBE EXTENSION 17°:

Shall be fabricated from 12 gauge sheet steel and will have a multi-stage baked-on powder coat finish.

CRAWL TUBE ELBOWS:

Shall be constructed of UV-stabilized, rotationally molded, linear, low density polyethylene with an average wall thickness of .250".

X2 SSS HDPE TRIM & R3.5 TUBE PANEL STIFFENER:

Shall be made from high density 3/4" sheet plastic specially formulated for optimum UV stability and color retention.

CRAWL-NETIX RAIL SECTION:

Shall be fabricated from 1.660" O.D. 11 gauge steel tubing, 1.029" O.D. 14 gauge steel tubing, 10 gauge sheet steel, and 3/16" steel clevises and will have a multi-stage baked-on powder coat finish.

CRAWL-NETIX NET SECTION:

Shall be made from 16mm steel-reinforced rope with high-strength copolymer plastic intersection connectors and machined aluminum end ferrules.

HARDWARE:

Shall be stainless steel, zinc/nickel plated or galvanized as required to resist rust and corrosion.

Maintenance

Periodically tighten all screws, bolts and nuts. A periodic inspection of all parts is necessary. If a part is broken or worn, replace immediately. For general maintenance please refer to our Playground Maintenance Manual.



www.playcraftsystems.com
For Customer Service Call
800.333.8519 (U.S.A.) or 541.955.9199 (International)

Rev B
11/19/2024