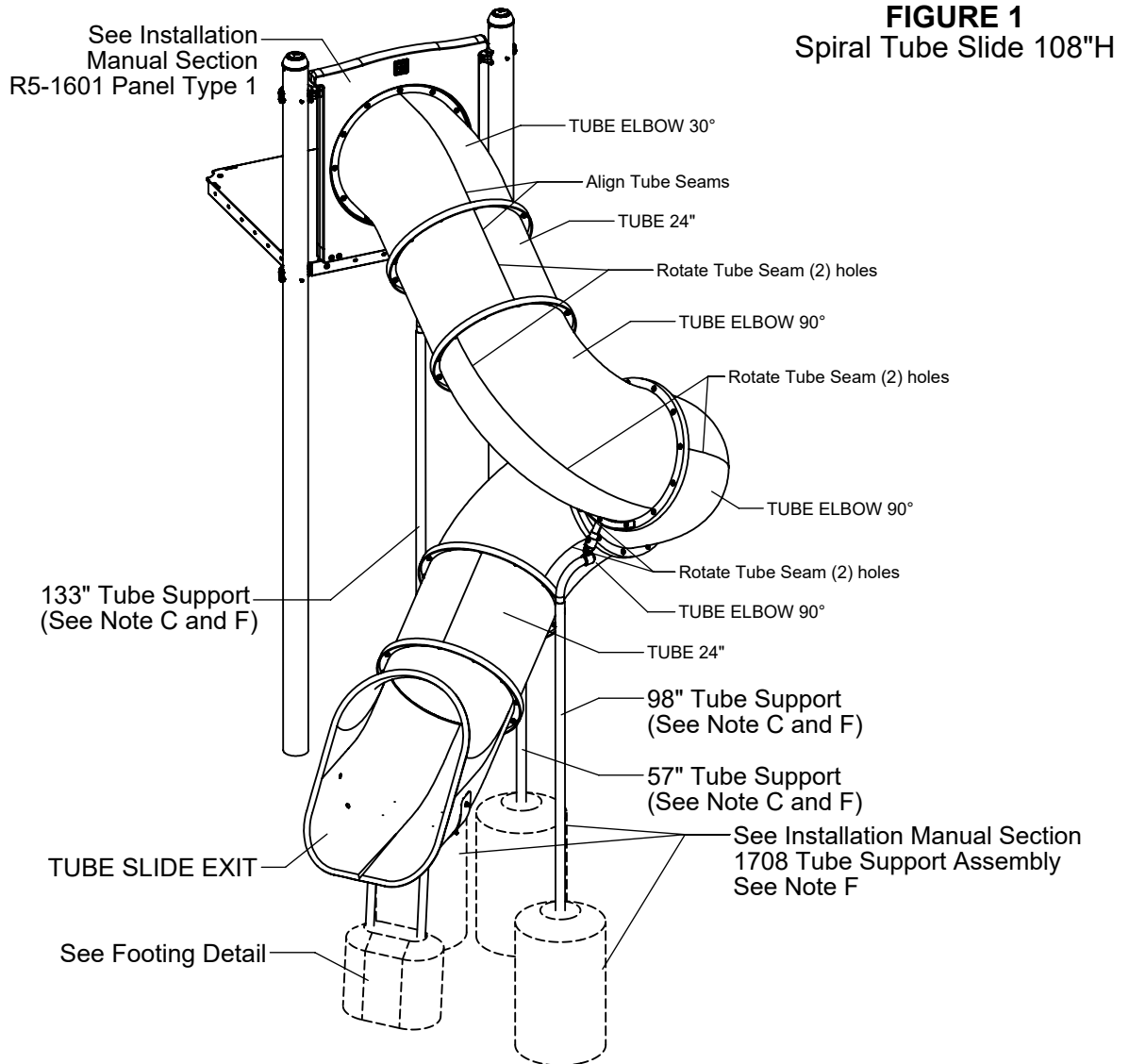


IMPORTANT NOTES: Read First

- (A) Use liquid thread lock (such as Loctite®) with all threaded hardware. **Important:** Liquid thread lock (prior to curing) helps to eliminate the common problem of "thread seizure" in stainless steel hardware by serving as a lubricant during assembly.
- (B) Do not pour concrete until the equipment is completely assembled, leveled and plumbed. Concrete must be allowed to cure completely before using the equipment (at least 72 hours).
- (C) Refer to Installation Manual for R5-1601 Panel Type 1 and 1708 Tube Support assembly instructions.
- (D) Use appropriate compliant protective surfacing and adjust footing depths accordingly. See free publication - The Handbook for Public Playground Safety, Publication #325 at www.CPSC.gov for the surfacing appropriate for the fall height of the equipment or consult your surfacing supply representative.
- (E) Exit height must be between 7" [180mm] and 15" [380mm] from finish grade.
- (F) Tube support lengths shown require footings ϕ 18" x 35" deep.



Step 1

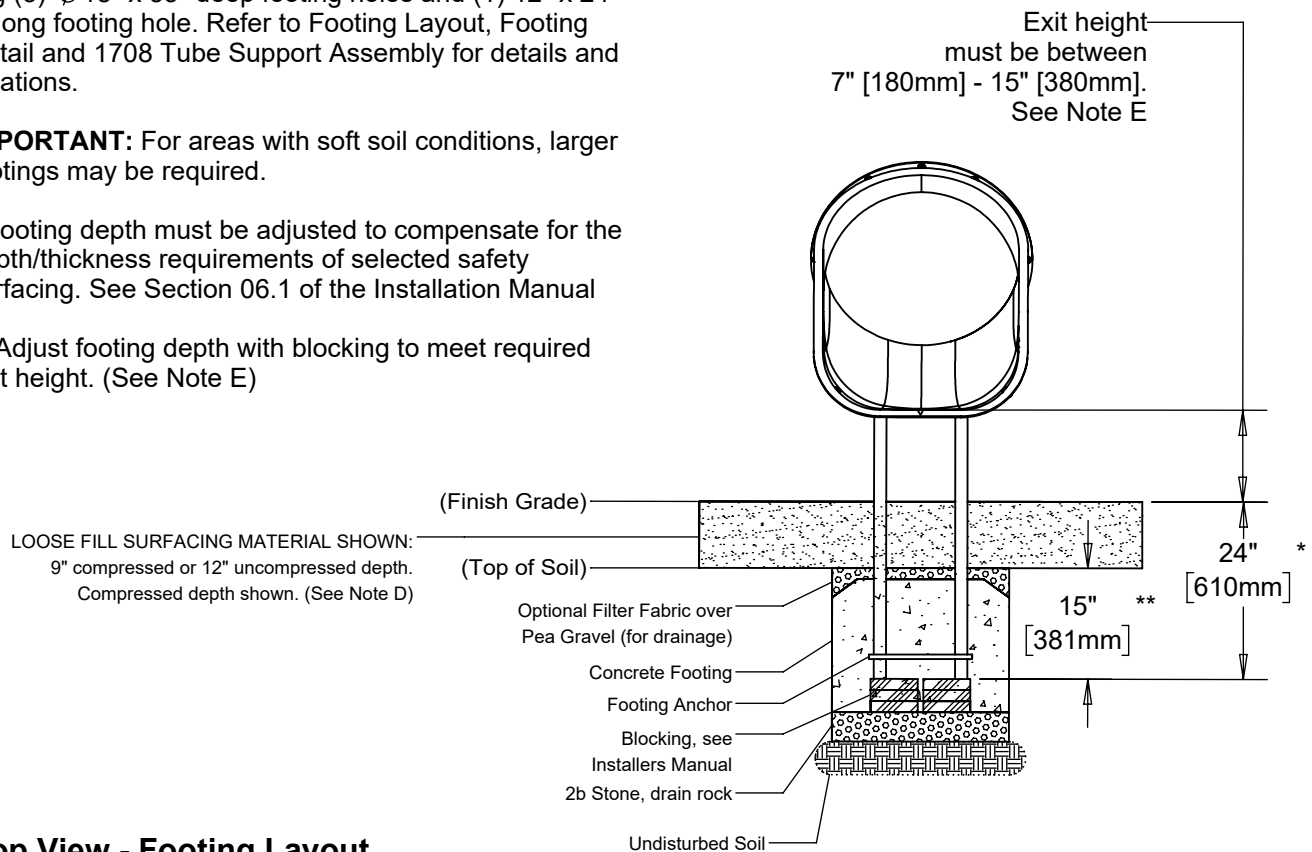
Dig (3) $\phi 18"$ x 35" deep footing holes and (1) 12" x 24" oblong footing hole. Refer to Footing Layout, Footing Detail and 1708 Tube Support Assembly for details and locations.

IMPORTANT: For areas with soft soil conditions, larger footings may be required.

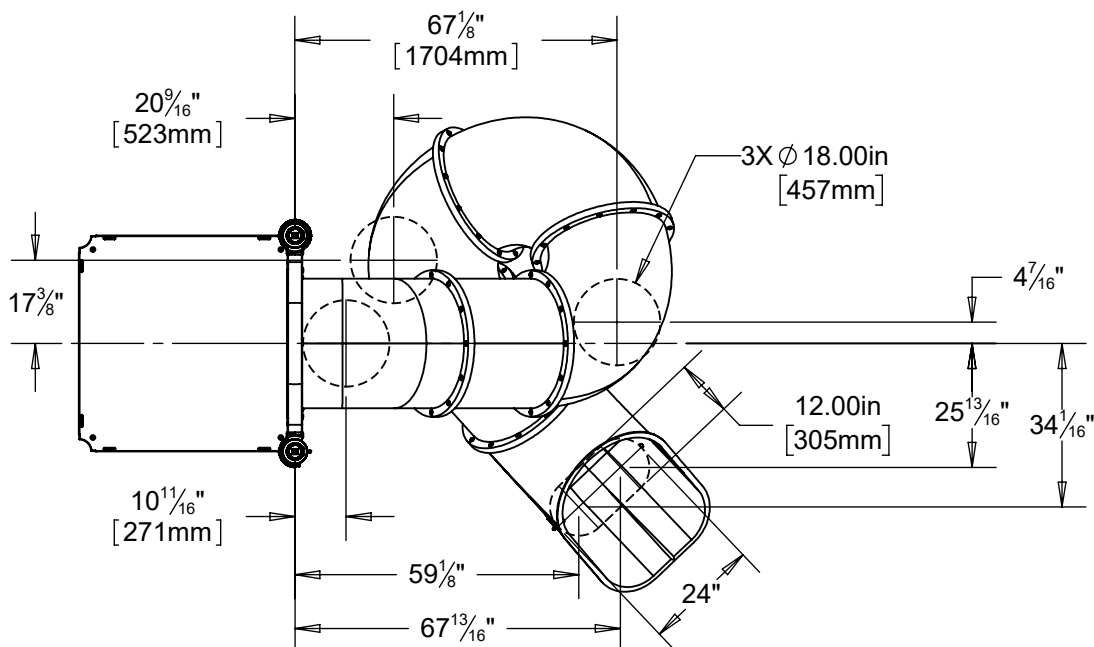
* Footing depth must be adjusted to compensate for the depth/thickness requirements of selected safety surfacing. See Section 06.1 of the Installation Manual

** Adjust footing depth with blocking to meet required exit height. (See Note E)

Footing Detail



Top View - Footing Layout



Step 2 (Factory Assembled)

Attach Tube Slide Leg to Tube Slide Exit as shown in Figure 2. (See Note A)

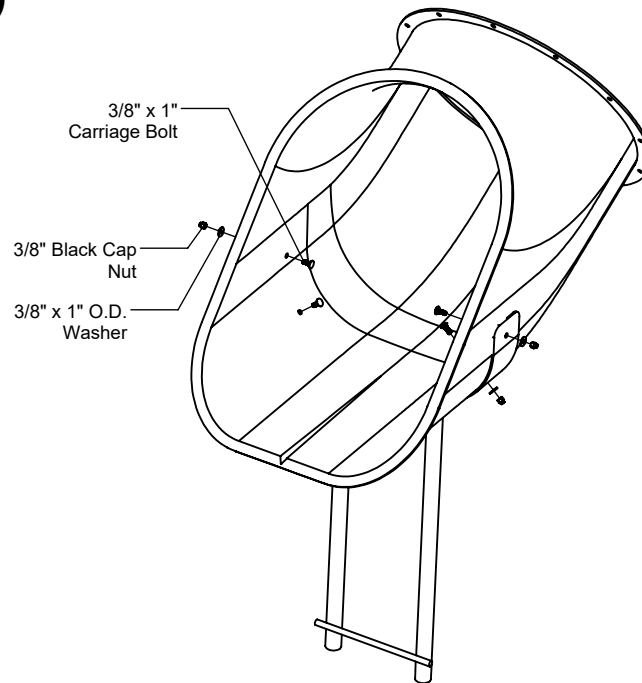


FIGURE 2

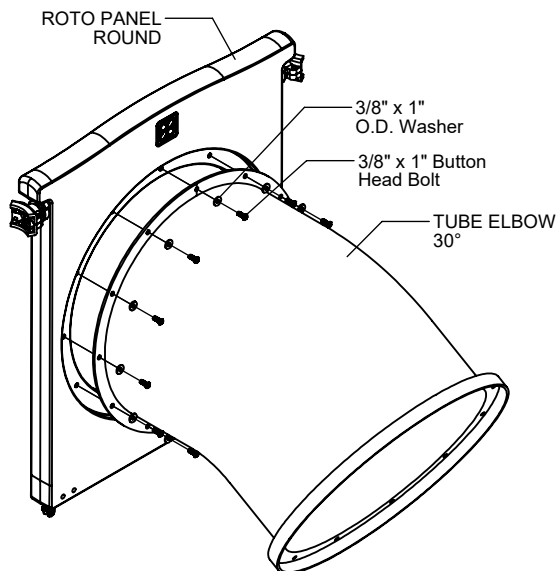


FIGURE 3

Step 3 (Factory Assembled)

Attach Tube Elbow to the Roto Panel Round as shown in Figure 3. (See Note A)

Step 4

Attach panel to posts and deck. (Refer to Section R5-1601 Panel Type 1 of the Installation Manual and Note A)

Step 5

Refer to Figure 1 on Page 1 and Side Elevation below for tube orientation. Attach remaining tube sections as shown in Figure 4. For tube connections with Tube Support refer to Section 1708 Tube Support Assembly of the Installation Manual and Figure 5. (See Note A)

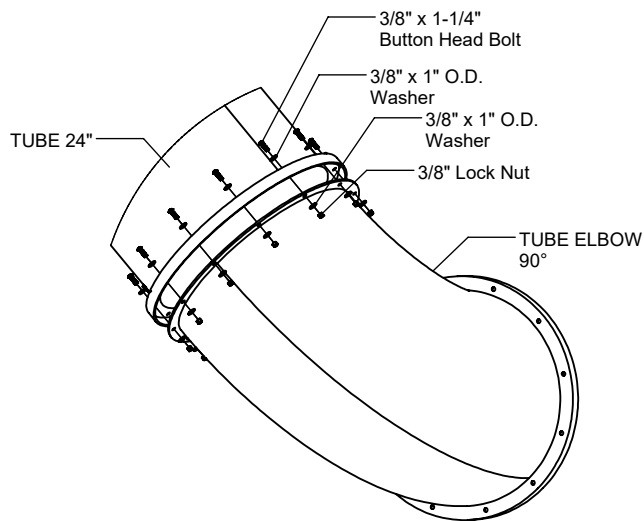


FIGURE 4

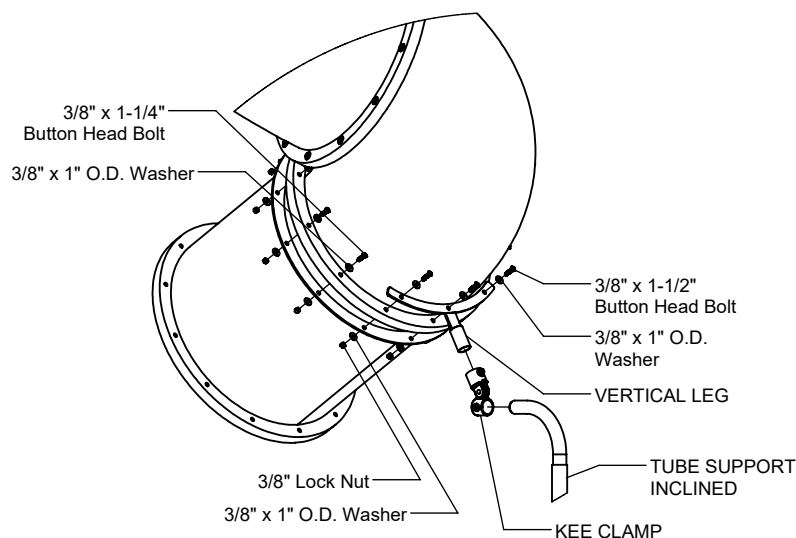
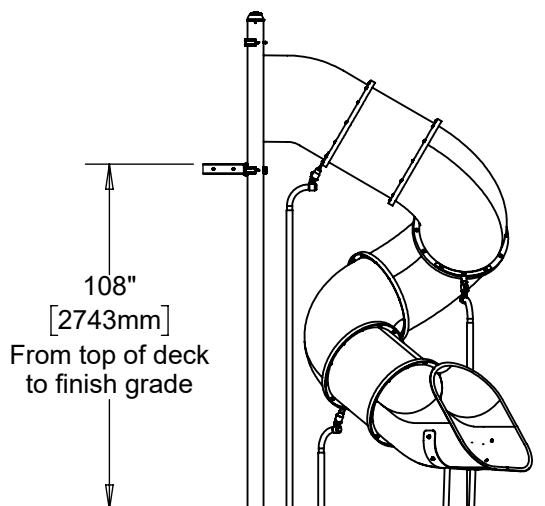


FIGURE 5



Step 6

Fully tighten all fasteners according to the "TIGHTENING TORQUE FOR HARDWARE" section of the Installation Manual.

Step 7

Plumb and level entire component. Pour concrete into footing holes. Allow at least 72 hours to cure before using this equipment. (See Note B)

Step 8

Place appropriate compliant protective surfacing under and around Spiral Tube Slide. (See Note D)

R5 SPIRAL TUBE SLIDE 108"H INSTALLATION INSTRUCTIONS

R5-1707-9SP
Page 5 of 5

Parts List

Part #	DESCRIPTION	QTY.
DE-1509	Tube Elbow 90°	3
DE-1524-MF	Tube 24" MF	2
FS-1708-INCL	Tube Support Inclined	3
9103062-TR	Bolt Button Head 3/8" x 1-1/4"	63
9333002	Washer Flat 3/8" x 1" O.D. x .100" thick	126
9413002	Nut Lock 3/8"	63

Assembled Parts List

Part #	DESCRIPTION	QTY.
DE-1500	Tube Slide Exit	1
DE-1503	Tube Elbow 30°	1
FS-1707-2	Tube Slide Leg Support #2	1
9103052-TR	Bolt Button Head 3/8" x 1"	12
9113052	Bolt Carriage 3/8" x 1"	4
9333002	Washer Flat 3/8" x 1" O.D. x .100" thick	16
9413162-BLK	Nut Lock 3/8" w/ Black Cap	4

Specifications

TUBE SECTION:

Shall be constructed of UV-stabilized, rotationally molded linear low density polyethylene. All tube sections are single-wall construction with an average wall thickness of .250".

TUBE SLIDE LEG:

Shall be fabricated of 1.660" O.D. 11 gauge steel tubing welded onto a 3/16" steel plate with a 5/8" steel rod welded on as a footing anchor. The Slide Support has a multi-stage baked-on powder coat finish.

HARDWARE:

Shall be stainless steel, zinc/nickel plated or galvanized as required to resist rust and corrosion.

Maintenance

Periodically tighten all screws, bolts and nuts. A periodic inspection of all parts is necessary. If a part is broken or worn, replace immediately. For general maintenance please refer to our Playground Maintenance Manual.



www.playcraftsystems.com
For Customer Service Call
800.333.8519 (U.S.A.) or 541.955.9199 (International)

Rev G
2/9/2023