

IMPORTANT NOTES: Read First

(A) Use liquid thread lock (such as Loctite®) with all threaded hardware. **Important:** Liquid thread lock (prior to curing) helps to eliminate the common problem of "thread seizure" in stainless steel hardware by serving as a lubricant during assembly.

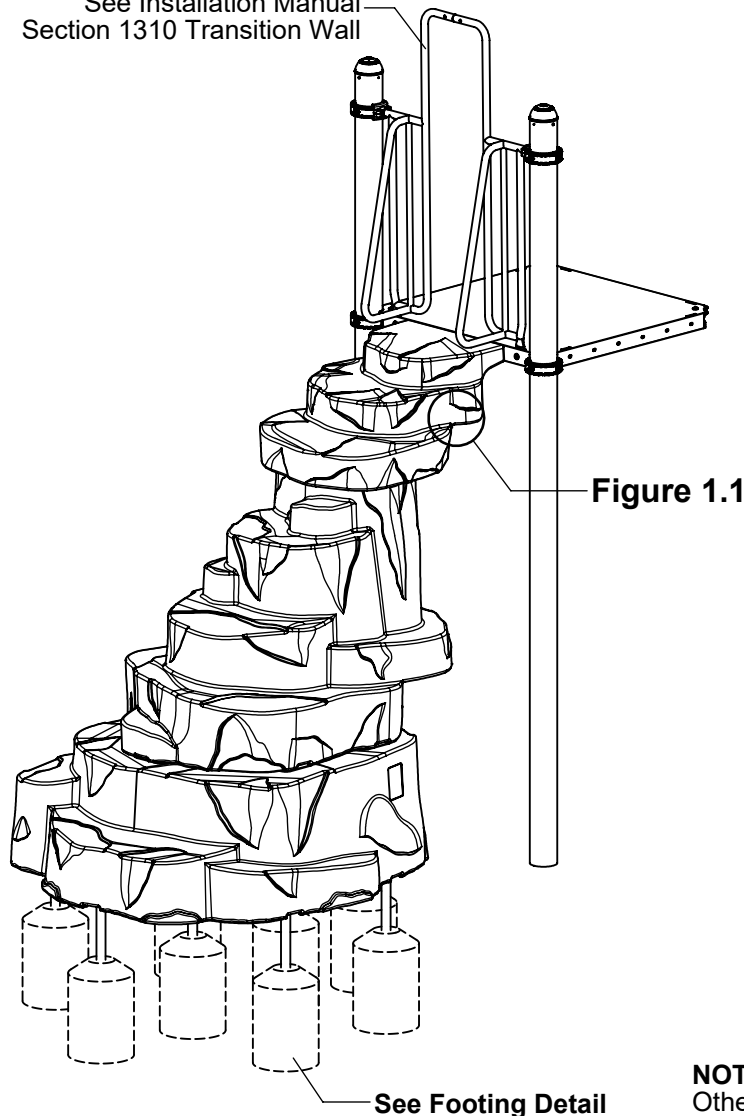
(B) Do not pour concrete until the equipment is completely assembled, leveled and plumbed. Concrete must be allowed to cure completely before using the equipment (at least 72 hours).

(C) Refer to Installation Manual for 09 Collars, 11 Socket Clamps, and 1310 Transition Wall installation instructions.

(D) An appropriate energy absorbing safety surface is required under and around all playground equipment. Loose fill protective surfacing is shown only as an example for the purpose of this assembly instruction. Other surfacing material may vary in thickness and/or compression depths. See free publication - The Handbook for Public Playground Safety, Publication #325 at www.cpsc.gov for the surfacing appropriate for the fall height of the equipment or consult your surfacing supply representative.

See Installation Manual
Section 1310 Transition Wall

FIGURE 1
Boulder Stack Climber



NOTE: R5 90" Boulder Stack shown. Other configurations will vary slightly, but does not affect assembly.

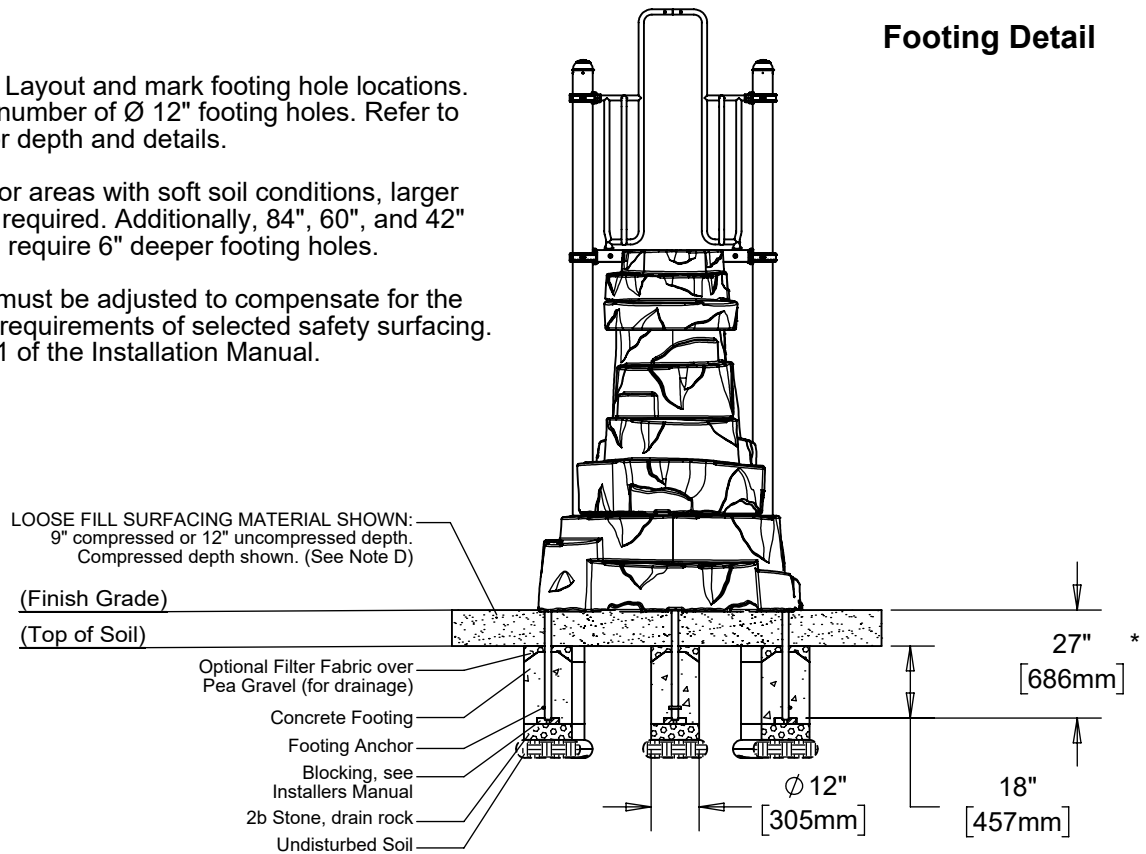
Step 1

Refer to Footing Layout and mark footing hole locations. Dig appropriate number of Ø 12" footing holes. Refer to Footing Detail for depth and details.

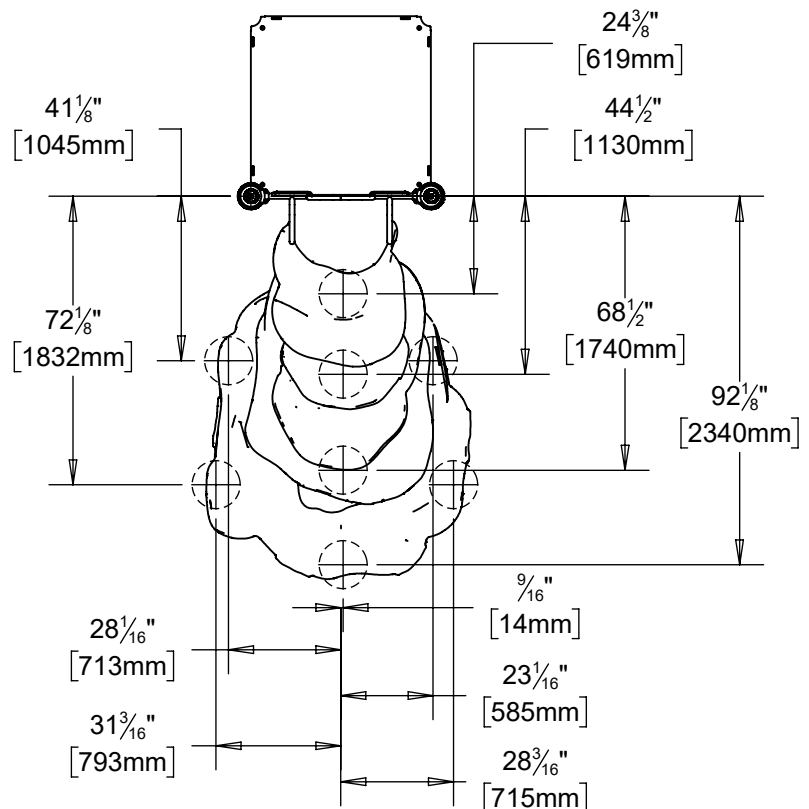
IMPORTANT: For areas with soft soil conditions, larger footings may be required. Additionally, 84", 60", and 42" deck heights will require 6" deeper footing holes.

* Footing depth must be adjusted to compensate for the depth/thickness requirements of selected safety surfacing. See Section 06.1 of the Installation Manual.

Footing Detail



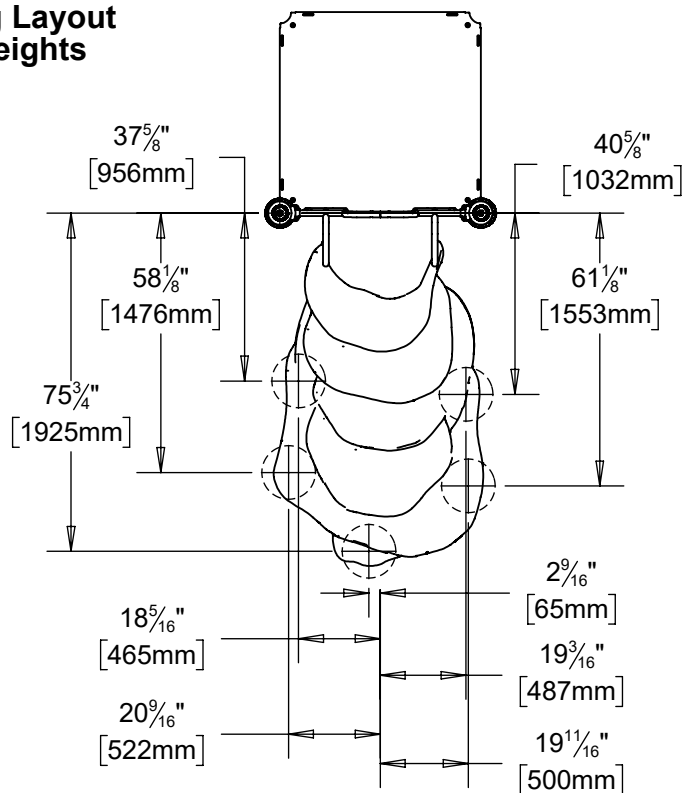
Top View - Footing Layout
84" - 96" Deck Heights



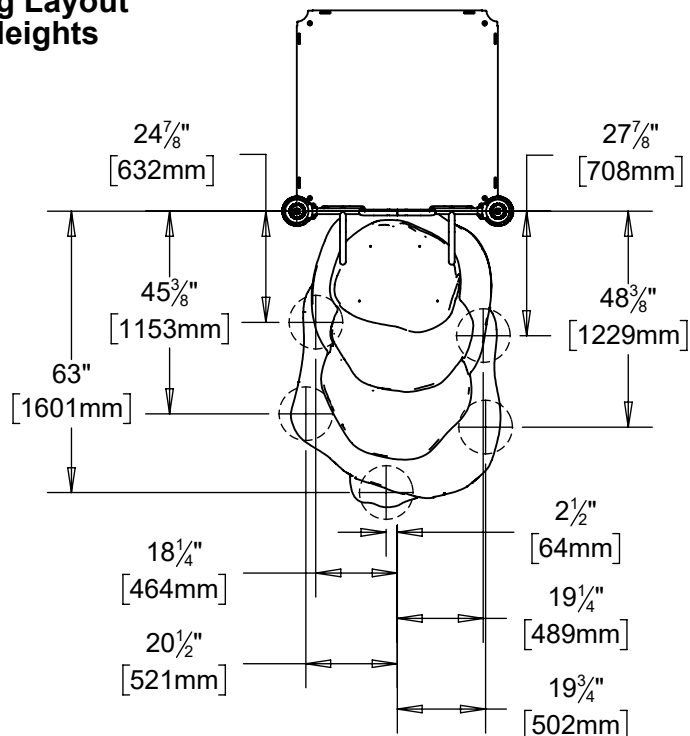
BOULDER STACK CLIMBER INSTALLATION INSTRUCTIONS

1290
Page 3 of 10

Top View - Footing Layout 60" - 72" Deck Heights



Top View - Footing Layout 42" - 54" Deck Heights



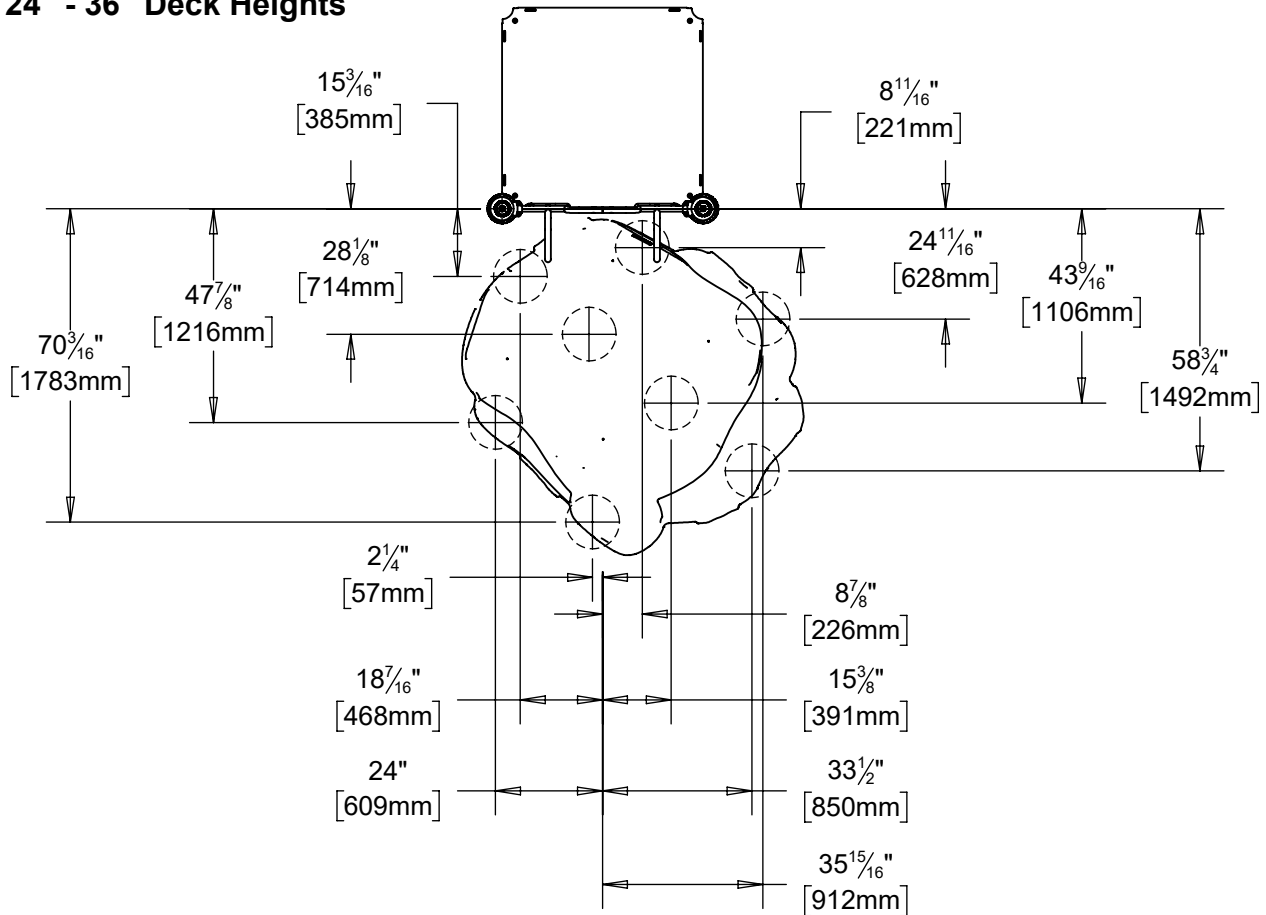
www.playcraftsystems.com
For Customer Service Call
800.333.8519 (U.S.A.) or 541.955.9199 (International)

Rev C
1/11/2022

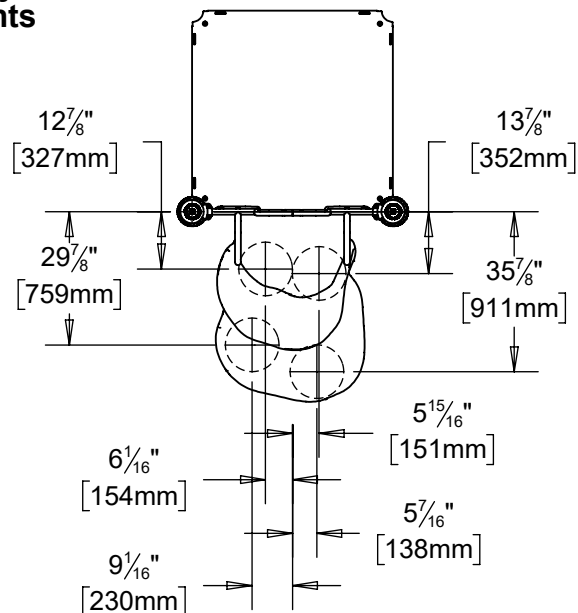
BOULDER STACK CLIMBER INSTALLATION INSTRUCTIONS

1290
Page 4 of 10

Top View - Footing Layout 24" - 36" Deck Heights



Top View - Footing Layout 18" - 24" Deck Heights



Step 2 (Factory Assembled)

For 60" - 96" Deck Heights Only

Attach Vent Plug to Top Rock as shown in Figure 1.1.

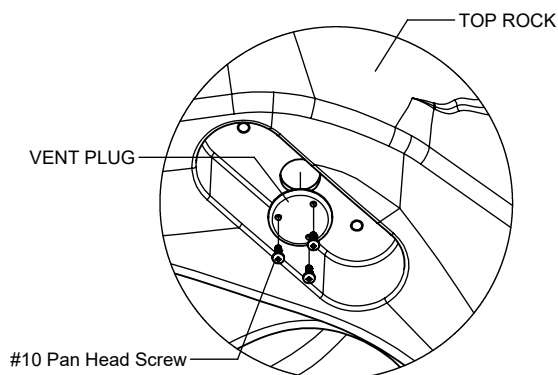


Figure 1.1

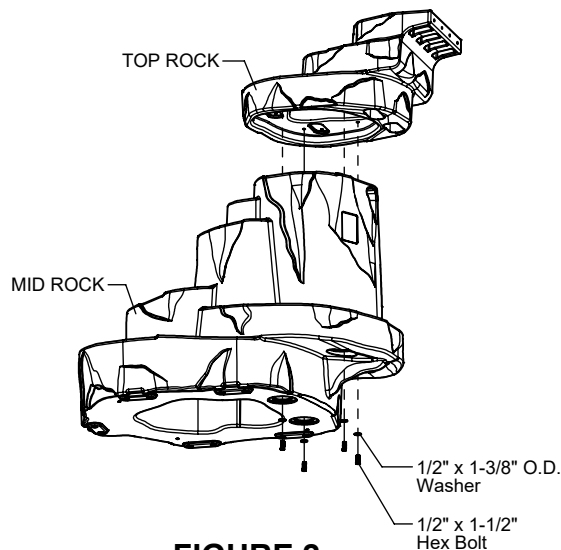


FIGURE 2

Step 3 (Factory Assembled)

For 60" - 96" Deck Heights Only

Attach Top Rock to Mid Rock as shown in Figure 2.
(See Note A)

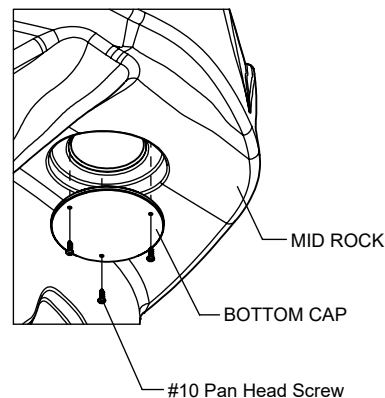


FIGURE 3

Step 4 (Factory Assembled)

For 42" - 96" Deck Heights Only

Attach Bottom Caps to Mid Rock as shown in Figure 3.

Step 5

For 84" - 96" Deck Heights Only

Attach Spacers to Mid Rock as shown in Figure 4.
(See Note A)

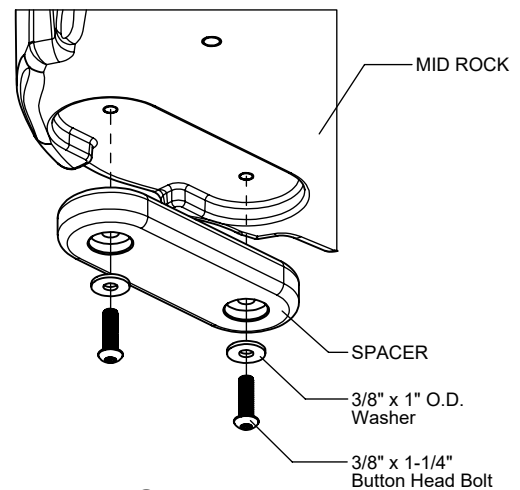


FIGURE 4

Step 6

For 84" - 96" Deck Heights Only

Attach Mid Rock to Base Rock as shown in Figure 5.
(See Note A)

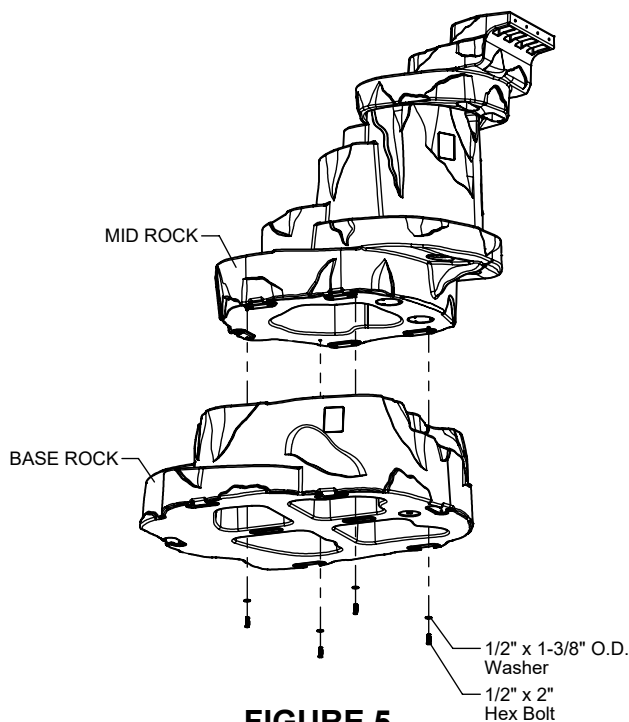


FIGURE 5

Step 7

Attach Legs to bottom of Rocks as shown in Figure 6.
(See Note A)

Step 8

Place Boulder Stack Climber into footing holes.
(See Note B)

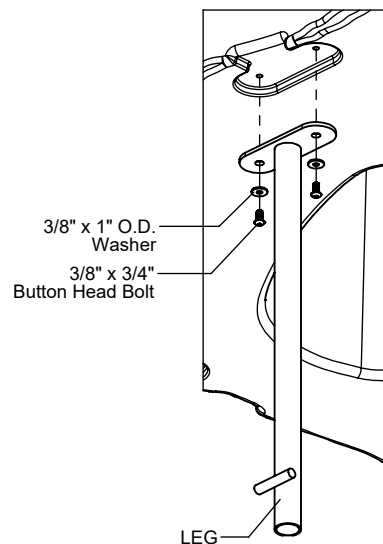


FIGURE 6

Step 9

For 18", 24", 60", 66", 84" and 90" Deck Heights Only

Attach Top Rock to deck as shown in Figure 7.
(See Note A)

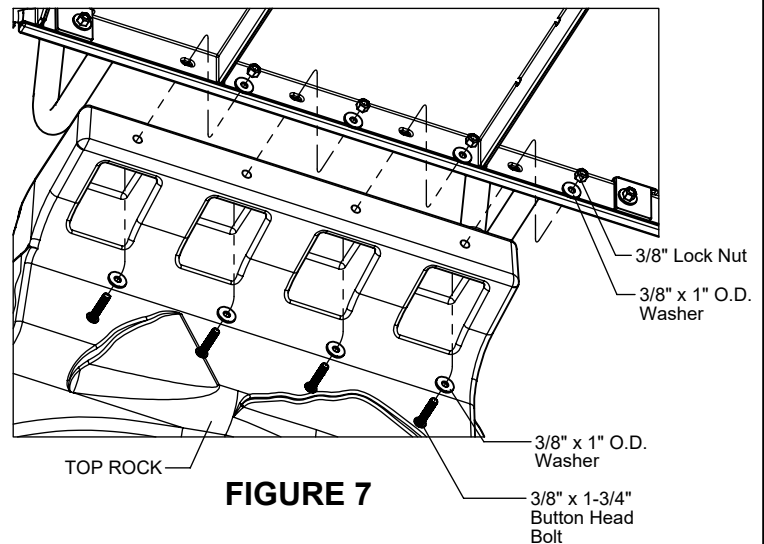


FIGURE 7

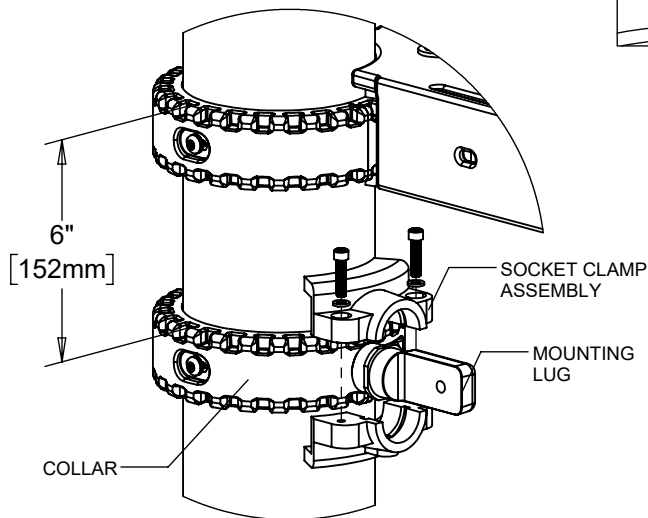


FIGURE 8

Step 10

For 72" and 96" Deck Heights Only

Attach Collars at height shown in Figure 8. Attach Mounting Lug to Collar with Socket Clamp Assembly as shown in Figure 8. (See Notes A & C)

Step 11

For 72" and 96" Deck Heights Only

Attach Filler Plate to Deck as shown in Figure 9.
(See Note A)

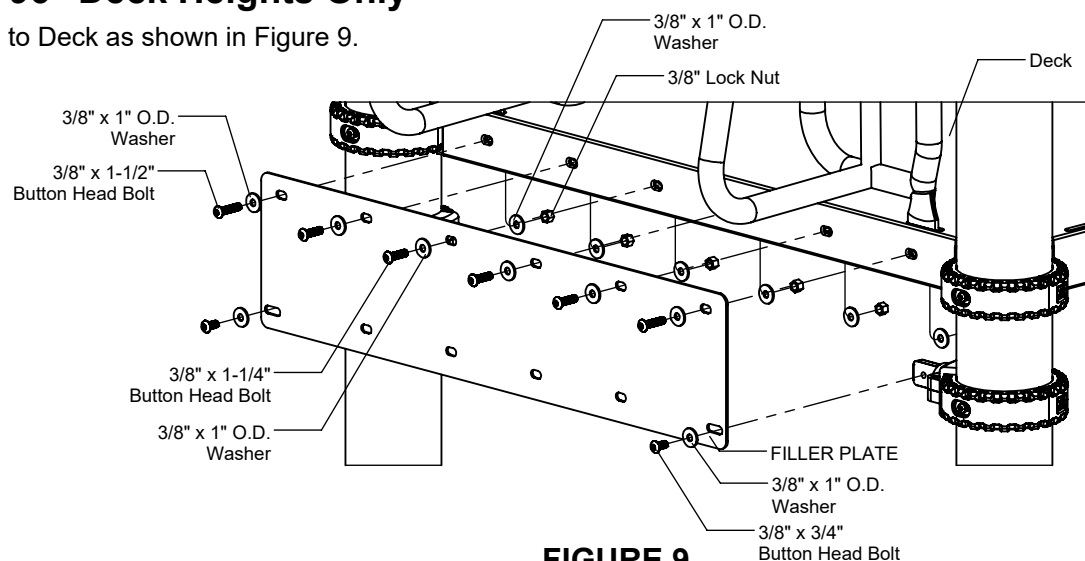


FIGURE 9

Step 12

For 72" and 96" Deck Heights Only

Attach Top Rock to Filler Plate as shown in Figure 10.
(See Note A)

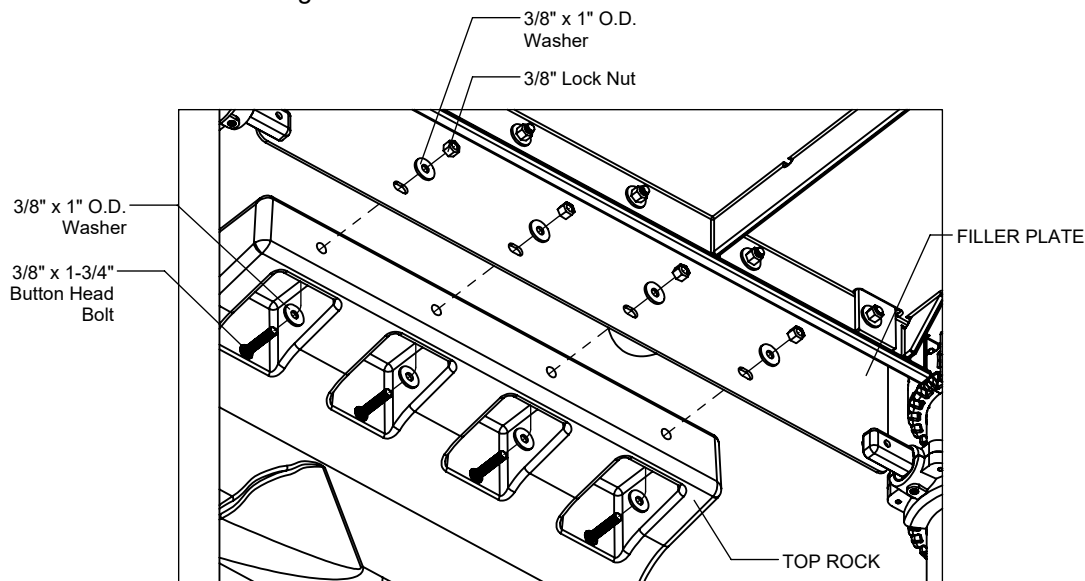


FIGURE 10

Step 13

Fully tighten all fasteners according to the
"TIGHTENING TORQUE FOR HARDWARE"
section of the Installation Manual.

Step 14

Plumb and level entire component. Pour
concrete into footing holes. Allow at least 72
hours to cure before using this equipment.
(See Note B)

Step 15

Place required protective surfacing under and
around Boulder Stack Climber. (See Note D)

BOULDER STACK CLIMBER INSTALLATION INSTRUCTIONS

1290
Page 9 of 10

Parts List

96" Height: S-1290-D123F		
Part #	DESCRIPTION	QTY
AE-0371	Boulder Stack Filler Plate	1
DE-0032	Base Rock	1
EE-0214	Rock Spacer	5
FS-1290	Boulder Stack Leg	8
Varies	Mounting Lug	2
Varies	Socket Clamp Set	2
9103032-TR	Bolt Button Head 3/8" x 3/4"	18
9103062-TR	Bolt Button Head 3/8" x 1-1/4"	14
9103072-TR	Bolt Button Head 3/8" x 1-1/2"	2
9103082-TR	Bolt Button Head 3/8" x 1-3/4"	4
9125092	Bolt Hex 1/2" x 2"	4
9333002	Washer Flat 3/8" x 1" O.D. x .100" thick	48
9335062-5	Washer Flat 1/2" x 1-3/8" OD	4
9413002	Nut Lock 3/8"	10

84" - 90" Height: S-1290-D123		
Part #	DESCRIPTION	QTY.
DE-0032	Base Rock	1
EE-0214	Rock Spacer	5
FS-1290	Boulder Stack Leg	8
9103032-TR	Bolt Button Head 3/8" x 3/4"	16
9103062-TR	Bolt Button Head 3/8" x 1-1/4"	10
9103082-TR	Bolt Button Head 3/8" x 1-3/4"	4
9125092	Bolt Hex 1/2" x 2"	4
9333002	Washer Flat 3/8" x 1" O.D. x .100" thick	34
9335062-5	Washer Flat 1/2" x 1-3/8" OD	4
9413002	Nut Lock 3/8"	4

72" Height: S-1290-D23F		
Part #	DESCRIPTION	QTY.
AE-0371	Boulder Stack Filler Plate	1
FS-1290	Boulder Stack Leg	5
Varies	Mounting Lug	2
Varies	Socket Clamp Set	2
9103032-TR	Bolt Button Head 3/8" x 3/4"	12
9103062-TR	Bolt Button Head 3/8" x 1-1/4"	4
9103072-TR	Bolt Button Head 3/8" x 1-1/2"	2
9103082-TR	Bolt Button Head 3/8" x 1-3/4"	4
9333002	Washer Flat 3/8" x 1" O.D. x .100" thick	32
9413002	Nut Lock 3/8"	10

60" - 66" Height: S-1290-D23		
Part #	DESCRIPTION	QTY.
FS-1290	Boulder Stack Leg	5
9103032-TR	Bolt Button Head 3/8" x 3/4"	10
9103082-TR	Bolt Button Head 3/8" x 1-3/4"	4
9333002	Washer Flat 3/8" x 1" O.D. x .100" thick	18
9413002	Nut Lock 3/8"	4

42" - 54" Height: S-1290-D2		
Part #	DESCRIPTION	QTY.
FS-1290	Boulder Stack Leg	5
9103032-TR	Bolt Button Head 3/8" x 3/4"	10
9333002	Washer Flat 3/8" x 1" O.D. x .100" thick	10

24" - 36" Height: S-1290-D1		
Part #	DESCRIPTION	QTY.
DE-0032	Base Rock	1
FS-1290	Boulder Stack Leg	8
9103032-TR	Bolt Button Head 3/8" x 3/4"	16
9333002	Washer Flat 3/8" x 1" O.D. x .100" thick	16

18" - 24" Height: S-1290-D3		
Part #	DESCRIPTION	QTY.
DE-0034	Top Rock	1
FS-1290	Boulder Stack Leg	4
9103032-TR	Bolt Button Head 3/8" x 3/4"	8
9103082-TR	Bolt Button Head 3/8" x 1-3/4"	4
9333002	Washer Flat 3/8" x 1" O.D. x .100" thick	16
9413002	Nut Lock 3/8"	4

Assembled Parts List

60" - 96" Height: S-1290-D123F, -D123, -D23F, -D23		
Part #	DESCRIPTION	QTY.
DE-0033	Mid Rock	1
DE-0034	Top Rock	1
EE-0204	Boulder Stack Bottom Cap	4
EE-4867	Geo-Wave Vent Plug	1
9125072	Bolt Hex 1/2" x 1-1/2"	4
9251032	Screw SQ #10x3/4 DR PH SMS SS	15
9335062-5	Washer Flat 1/2" x 1-3/8" OD	4

42" - 54" Height: S-1290-D2		
Part #	DESCRIPTION	QTY.
DE-0033	Mid Rock	1
EE-0204	Boulder Stack Bottom Cap	4
9251032	Screw SQ #10x3/4 DR PH SMS SS	12



www.playcraftsystems.com
For Customer Service Call
800.333.8519 (U.S.A.) or 541.955.9199 (International)

Rev C
1/11/2022

Specifications

BOULDER STACK BOTTOM CAP:

Shall be made from high density 3/4" sheet plastic specially formulated for optimum UV stability and color retention.

BOULDER STACK FILLER PLATE:

Shall be fabricated using punched 10 gauge sheet steel and will have a multi-stage baked-on powder coat finish.

BOULDER STACK LEG:

Shall be fabricated using 1.660" O.D. 11 gauge steel tubing with a welded 1/4" thick steel mounting plate and will have a multi-stage baked-on powder coat finish.

GEO WAVE VENT PLUG:

Shall be made from high density 3/4" sheet plastic specially formulated for optimum UV stability and color retention.

ROCK SPACER:

Shall be made from high density 1" sheet plastic specially formulated for optimum UV stability and color retention.

TOP, MID & BASE ROCK:

Shall be constructed of UV-stabilized, rotationally molded, linear, low density polyethylene with an average wall thickness of .250".

MOUNTING LUGS:

Shall be precision die-cast from a high-strength aluminum alloy and will have a multi-stage baked-on powder coat finish.

SOCKET CLAMPS:

Shall be two-part and precision die-cast from a high strength aluminum alloy and will have a multi-stage baked-on powder coat finish.

HARDWARE:

Shall be stainless steel, zinc/nickel plated or galvanized as required to resist rust and corrosion.

Maintenance

Periodically tighten all screws, bolts and nuts. A periodic inspection of all parts is necessary. If a part is broken or worn, replace immediately. For general maintenance please refer to our Playground Maintenance Manual.