

IMPORTANT NOTES: Read First

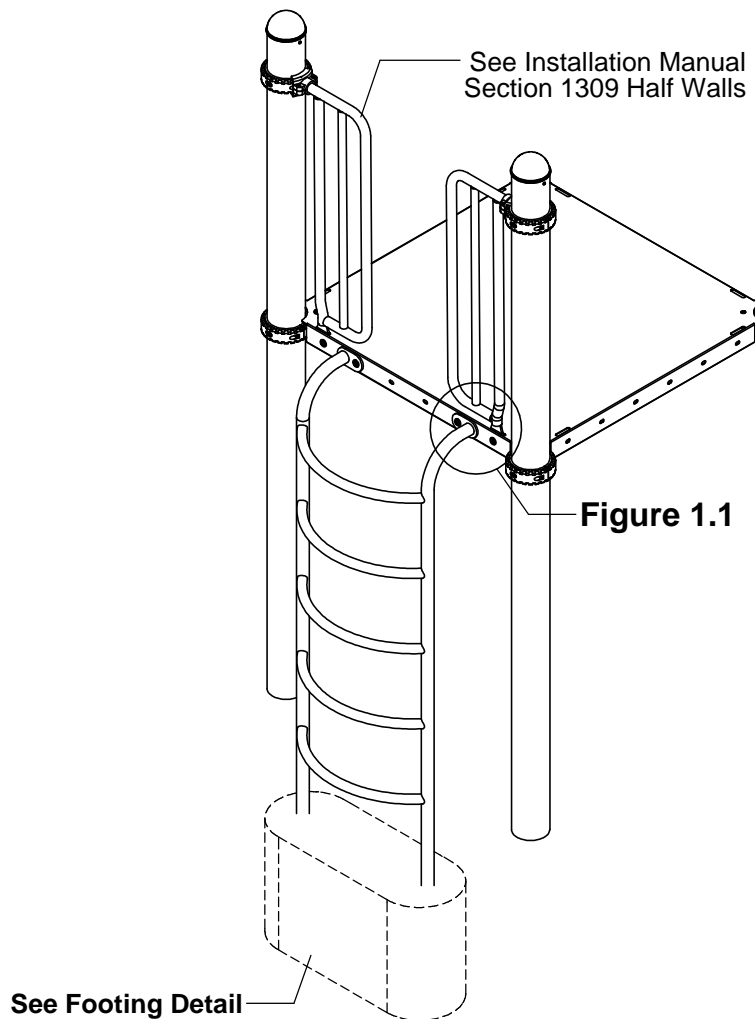
(A) Use liquid thread lock (such as Loctite®) with all threaded hardware. **Important:** Liquid thread lock (prior to curing) helps to eliminate the common problem of "thread seizure" in stainless steel hardware by serving as a lubricant during assembly.

(B) Do not pour concrete until the equipment is completely assembled, leveled and plumbed. Concrete must be allowed to cure completely before using the equipment (at least 72 hours).

(C) Refer to Installation Manual 1309 Half Wall assembly instructions.

(D) Use appropriate compliant protective surfacing and adjust footing depths accordingly. See free publication - The Handbook for Public Playground Safety, Publication #325 at www.CPSC.gov for the surfacing appropriate for the fall height of the equipment or consult your surfacing supply representative.

FIGURE 1
Curved Rung Ladder



NOTE: R5 5' deck height shown.
R3.5 will vary slightly but does not affect assembly.

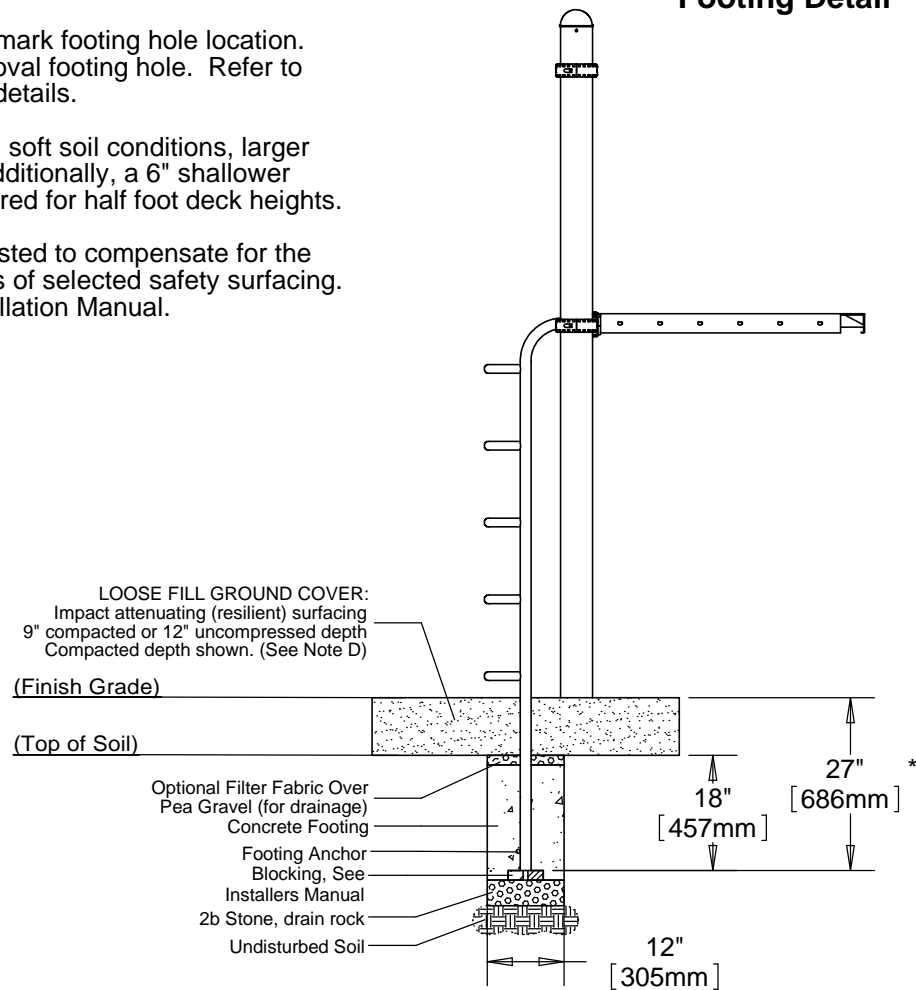
Step 1

Refer to Footing Layout and mark footing hole location. Dig (1) 12" x 32" x 18" deep oval footing hole. Refer to Footing Detail for depth and details.

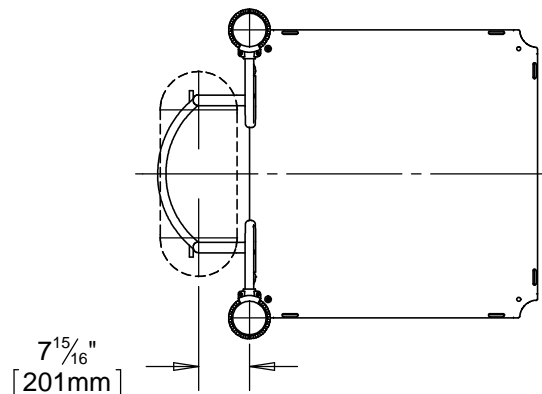
IMPORTANT: For areas with soft soil conditions, larger footings may be required. Additionally, a 6" shallower oval footing hole will be required for half foot deck heights.

* Footing depth must be adjusted to compensate for the depth/thickness requirements of selected safety surfacing. See Section 06.1 of the Installation Manual.

Footing Detail



Top View - Footing Layout



Step 2

Attach Half Walls to deck. (See Note C)

Step 3

Place Curved Rung Ladder into footing hole and attach to deck as shown in Figure 1.1. (See Note A)

Step 4

Fully tighten all fasteners according to the "TIGHTENING TORQUE FOR HARDWARE" section of the Installation Manual.

Step 5

Plumb and level entire component. Pour concrete into footing hole. Allow at least 72 hours to cure before using this equipment. (See Note B)

Step 6

Place appropriate compliant protective surfacing under and around Curved Rung Ladder. (See Note D)

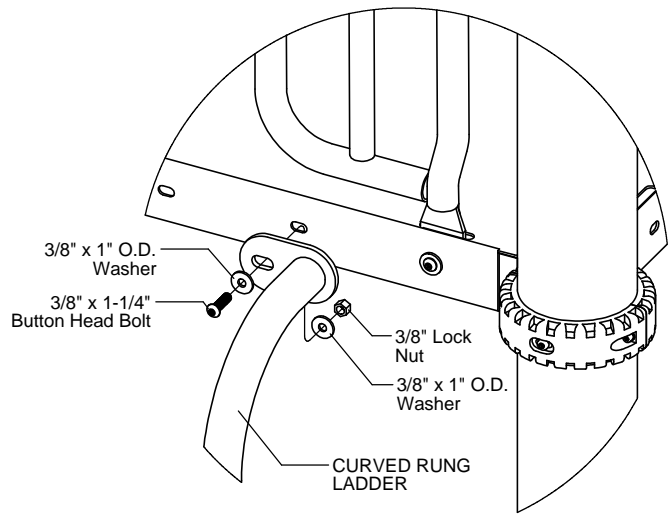


Figure 1.1

Specifications

CURVED RUNG LADDER:

Shall be fabricated using 1.660" O.D. 11 gauge steel tubing with welded 1/4" thick steel mounting plates and 1.315" O.D. 12 gauge steel rungs. The Curved Rung Ladder shall have a multi-stage baked-on powder coat finish.

HARDWARE:

Shall be stainless steel, zinc/nickel plated or galvanized as required to resist rust and corrosion.

Parts List

Part #	DESCRIPTION	QTY
FS-1282	Curved Rung Ladder	1
9103062-TR	Bolt Button Head 3/8" x 1-1/4"	2
9333002	Washer Flat 3/8" x 1" O.D. x .100" thick	4
9413002	Nut Lock 3/8"	2

Maintenance

Periodically tighten all screws, bolts and nuts. A periodic inspection of all parts is necessary. If a part is broken or worn, replace immediately. For general maintenance please refer to our Playground Maintenance Manual.