

IMPORTANT NOTES: Read First

(A) Use liquid thread lock (such as Loctite®) with all threaded hardware. **Important:** Liquid thread lock (prior to curing) helps to eliminate the common problem of "thread seizure" in stainless steel hardware by serving as a lubricant during assembly.

(B) Do not pour concrete until the equipment is completely assembled, leveled and plumbed. Concrete must be allowed to cure completely before using the equipment (at least 72 hours).

(C) Refer to Installation Manual Section R5-1304 Sit Down Wall Slide Single, R5-1303-ACL Accelerator Slide Sit Down Hood or R3.5-1304-ACL Accelerator Slide Sit-Down Wall installation instructions.

(D) Exit height must be between 7" [180mm] and 15" [380mm] from finish grade. Exit region must also have a downward slope of 0 to 4°.

(E) Manufacturer recommends that the Roller Box Bottom Cover be periodically removed to clean out debris.

(F) Installation over sand fill surfacing not recommended for this product.

(G) An appropriate energy absorbing safety surface is required under and around all playground equipment. Loose fill protective surfacing is shown only as an example for the purpose of this assembly instruction. Other surfacing material may vary in thickness and/or compression depths. See free publication - The Handbook for Public Playground Safety, Publication #325 at www.cpsc.gov for the surfacing appropriate for the fall height of the equipment or consult your surfacing supply representative.

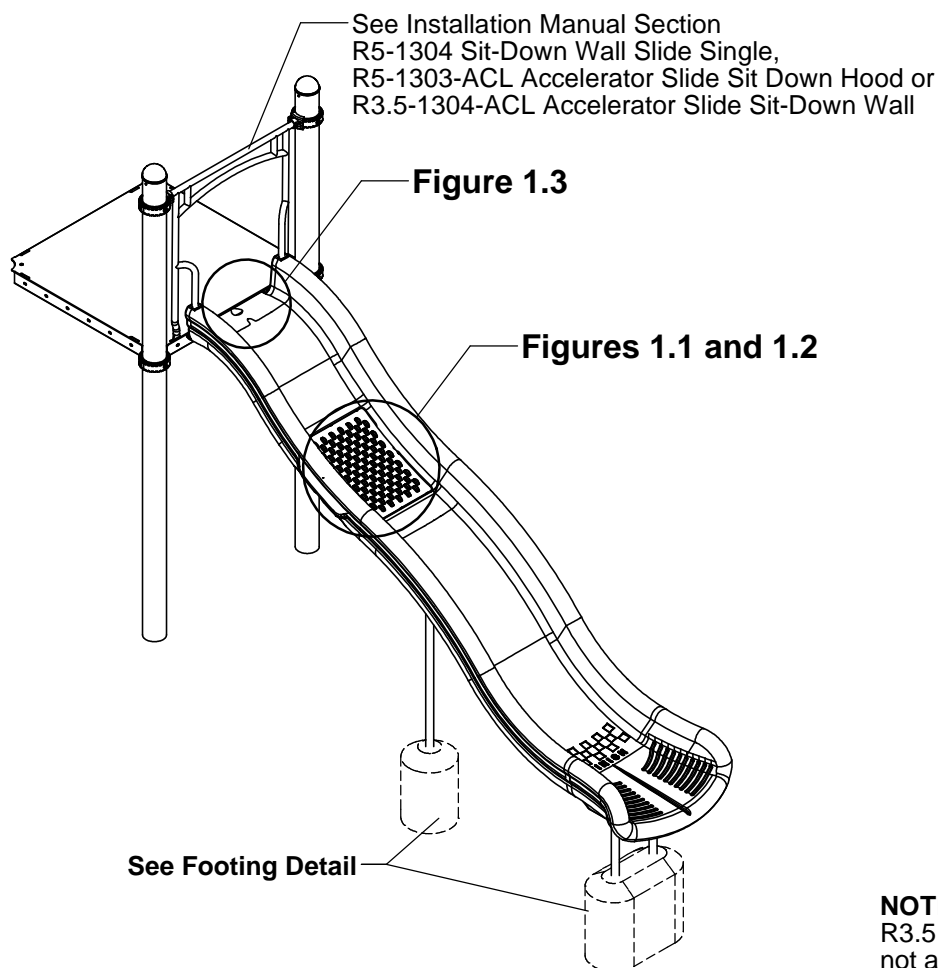


FIGURE 1
Accelerator Slide

NOTE: R5 6' deck height shown.
R3.5 may vary slightly, but does not affect the assembly.

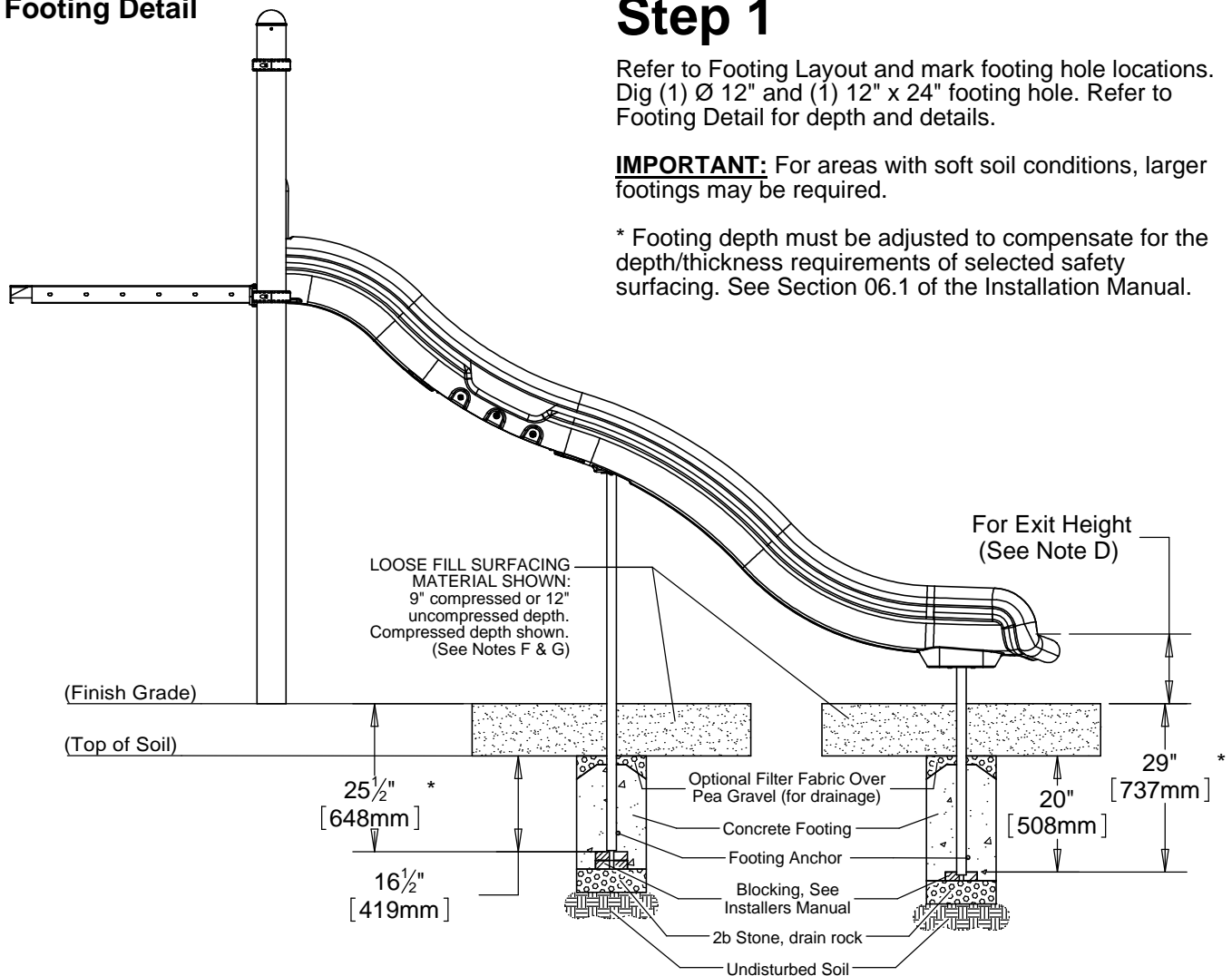
Footing Detail

Step 1

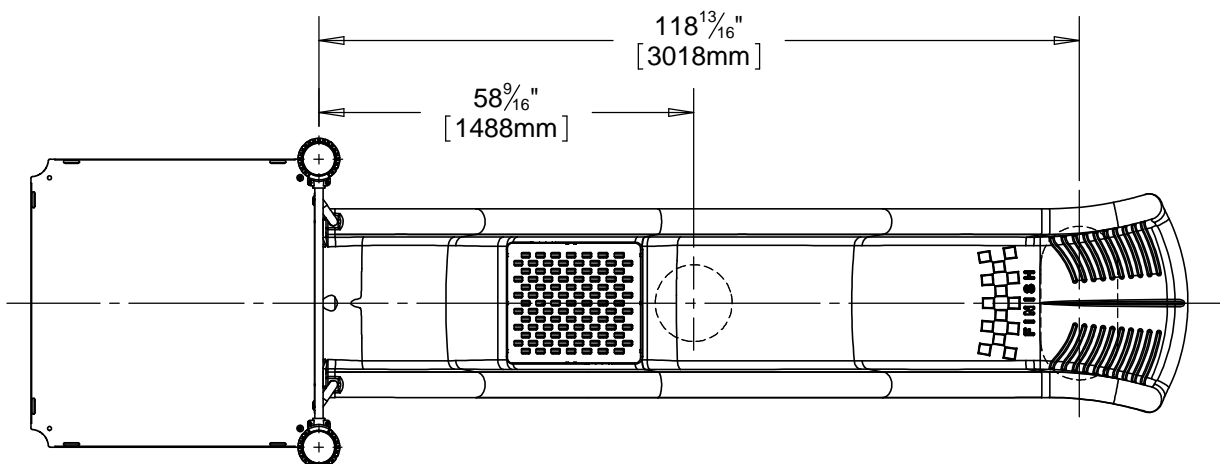
Refer to Footing Layout and mark footing hole locations. Dig (1) Ø 12" and (1) 12" x 24" footing hole. Refer to Footing Detail for depth and details.

IMPORTANT: For areas with soft soil conditions, larger footings may be required.

* Footing depth must be adjusted to compensate for the depth/thickness requirements of selected safety surfacing. See Section 06.1 of the Installation Manual.



Top View - Footing Layout



Step 2 (Factory Assembled)

Install Nutserts into the Accelerator Slide Roller Box as shown in Figure 2.

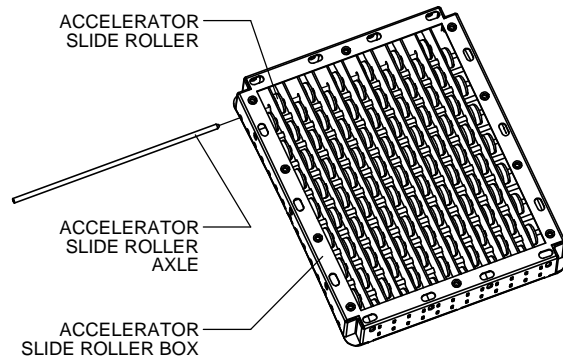


FIGURE 3

Step 4 (Factory Assembled)

Attach Roller Box Side Guard and Accelerator Slide Roller Box to Accelerator Slide as shown in Figure 1.1. (See Note A)

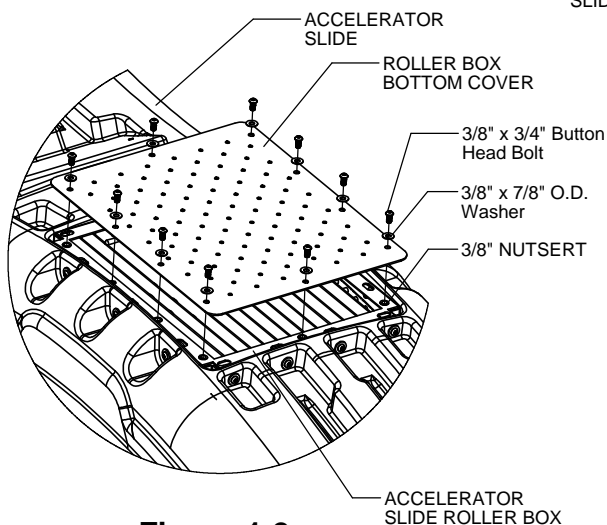


Figure 1.2

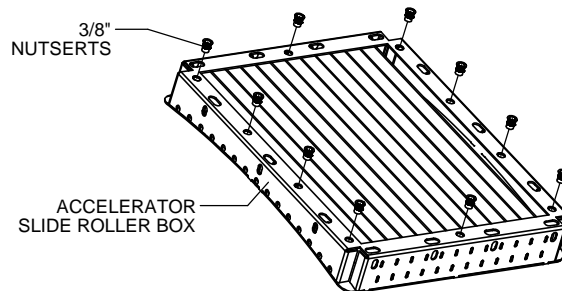


FIGURE 2

Step 3 (Factory Assembled)

Assemble Accelerator Slide Rollers and Accelerator Slide Roller Axes as shown in Figure 3.

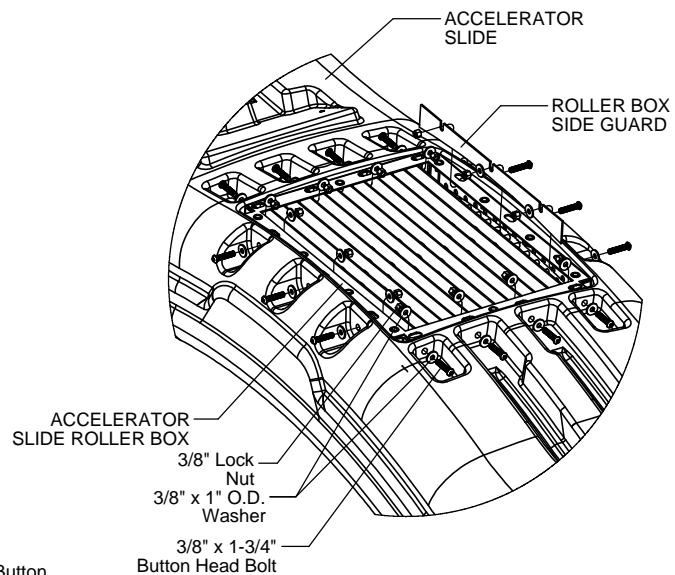


Figure 1.1

Step 5 (Factory Assembled)

Attach Roller Box Bottom Cover to Accelerator Slide Roller Box as shown in Figure 1.2.

NOTE: Do not use Loctite® on the hardware in this step. (See Note E)

Step 6

Attach Slide Support and Slide Leg to the Accelerator Slide as shown in Figure 4.
(See Note A)

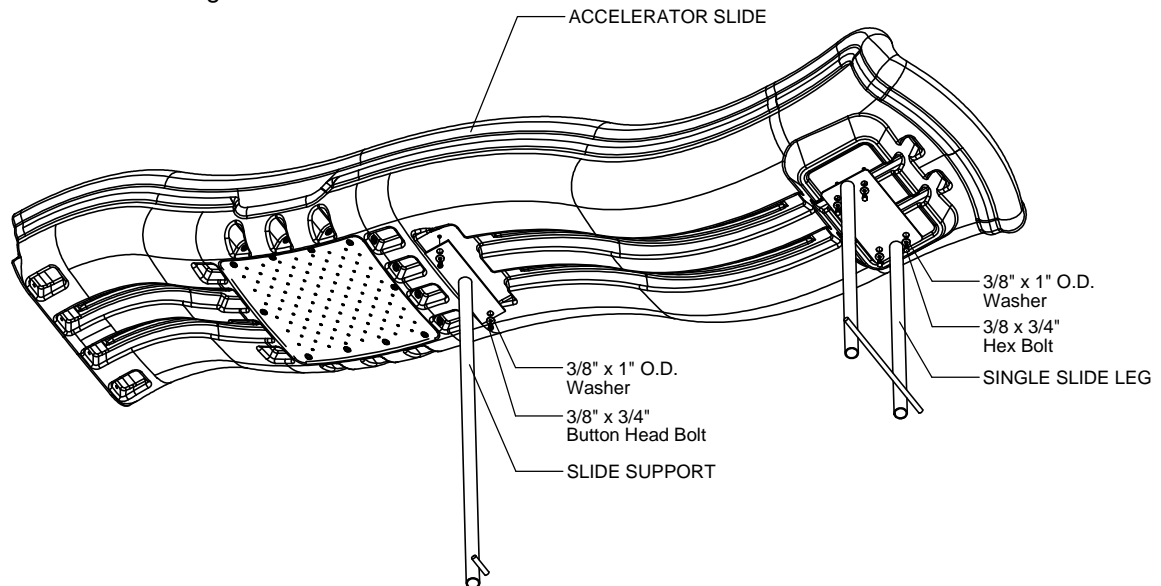


FIGURE 4

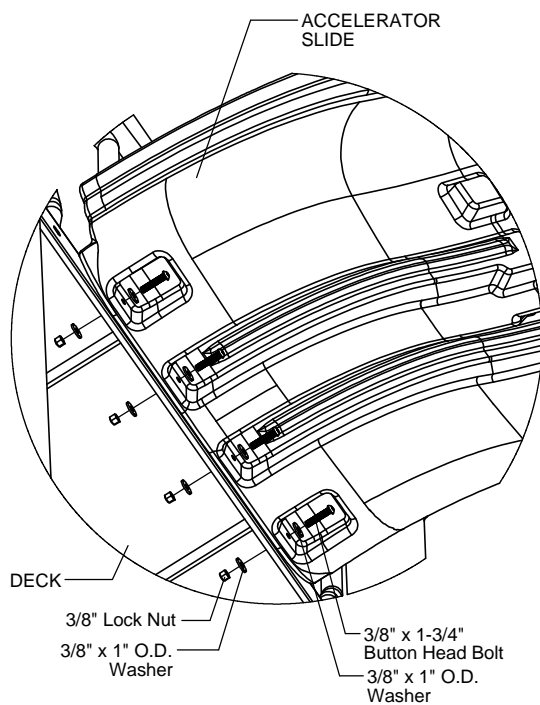


Figure 1.3

Step 7

Place Slide Support and Slide Leg into footing holes and attach Accelerator Slide to deck as shown in Figure 1.3. (See Note A)

Step 8

Fully tighten all fasteners according to the "TIGHTENING TORQUE FOR HARDWARE" section of the Installation Manual.

Step 9

Plumb and level entire component. Pour concrete into footing holes. Allow at least 72 hours to cure before using this equipment.
(See Notes B & D)

Step 10

Place required protective surfacing under and around the Accelerator Slide.
(See Notes F & G)

ACCELERATOR SLIDE INSTALLATION INSTRUCTIONS

1714
Page 5 of 5

Parts List

Part #	DESCRIPTION	QTY.
FS-1701	Single Slide Leg	1
FS-1704	Wave Slide Support	1
9103032-TR	Bolt Button Head 3/8" x 3/4"	2
9103082-TR	Bolt Button Head 3/8" x 1-3/4"	4
9123032	Bolt Hex 3/8" x 3/4"	4
9333002	Washer Flat 3/8" x 1" O.D. x .100" thick	14
9413002	Nut Lock 3/8"	4

Assembled Parts List

Part #	DESCRIPTION	QTY.
AE-4871	Roller Box Bottom Cover	1
AE-4873	Roller Box Side Gaurd	1
CE-1122	Accelerator Slide Roller Box	1
DE-4422	Accelerator Slide	1
EE-4875	Accelerator Slide Roller	97
LE-4874	Accelerator Slide Roller Axle	15
455110	Nutsert 3/8 x .690	10
9103032-TR	Bolt Button Head 3/8" x 3/4"	10
9103082-TR	Bolt Button Head 3/8" x 1-3/4"	14
9333002	Washer Flat 3/8" x 1" O.D. x .100" thick	28
9333042	Washer Flat 3/8" x 7/8" O.D.	10
9413002	Nut Lock 3/8"	14

Specifications

ACCELERATOR SLIDE:

Shall be constructed of UV-stabilized rotationally molded linear low density polyethylene with an average wall thickness of .250".

ACCELERATOR SLIDE ROLLER BOX:

Shall be fabricated using .100" thick punched aluminum sheets with welded .125" thick aluminum axle supports. The Accelerator Slide Roller Box shall have a multi-stage baked-on powder coat finish.

ACCELERATOR SLIDE ROLLER AXLE:

Shall be made from 3/8" Stainless Steel Rod.

ACCELERATOR SLIDE ROLLER:

Shall be made from high density 3/4" thick hot extruded polyethylene sheet plastic specially formulated for optimum UV stability and color retention.

SLIDE LEG:

Shall be fabricated using 1.660" O.D. 11 gauge steel tubing with welded 3/16" thick steel plate. The Slide Leg shall have a multi-stage baked-on powder coat finish.

SLIDE SUPPORT:

Shall be fabricated using 1.660" O.D. 11 gauge steel tubing with welded 3/16" thick steel plate. The Slide Support shall have a multi-stage baked-on powder coat finish.

HARDWARE:

Shall be stainless steel, zinc/nickel plated or galvanized as required to resist rust and corrosion.

Maintenance

Periodically tighten all screws, bolts and nuts. A periodic inspection of all parts is necessary. If a part is broken or worn, replace immediately. For general maintenance please refer to our Playground Maintenance Manual.



Manufactured by Krauss Craft, Inc.
www.playcraftsystems.com

For Customer Service Call
800.333.8519 (U.S.A.) or
541.955.9199 (International)

Rev F
11/13/2014