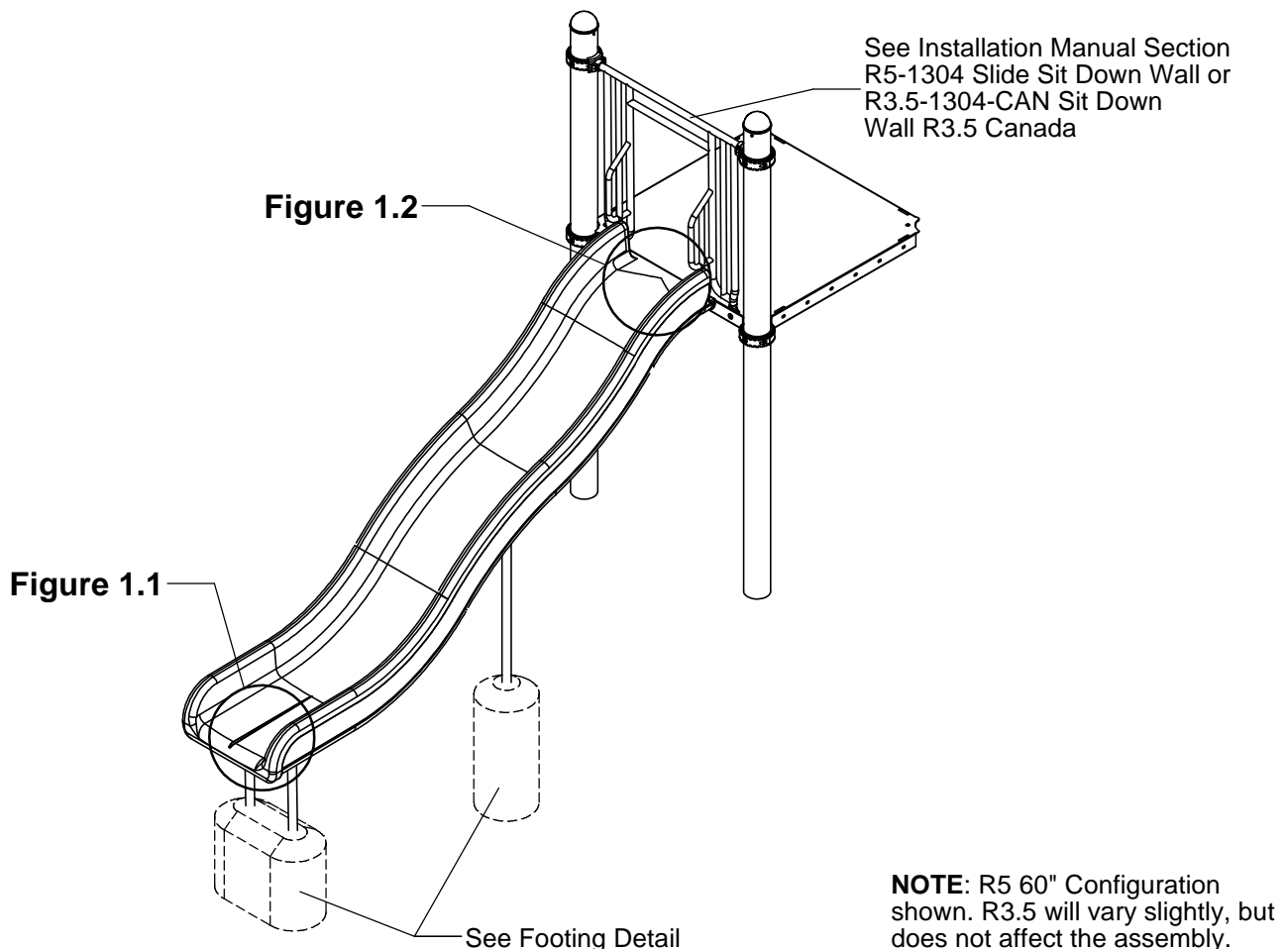


## IMPORTANT NOTES: Read First

- (A) Use liquid thread lock (such as Loctite®) with all threaded hardware. **Important:** Liquid thread lock (prior to curing) helps to eliminate the common problem of "thread seizure" in stainless steel hardware by serving as a lubricant during assembly.
- (B) Do not pour concrete until the equipment is completely assembled, leveled and plumbed. Concrete must be allowed to cure completely before using the equipment (at least 72 hours).
- (C) Refer to Installation Manual Section R5-1304 Slide Sit Down Wall or R3.5-1304-CAN Slide Sit Down Wall R3.5 Canada assembly instructions.
- (D) Use appropriate compliant protective surfacing and adjust footing depths accordingly. See free publication - The Handbook for Public Playground Safety, Publication #325 at [www.CPSC.gov](http://www.CPSC.gov) for the surfacing appropriate for the fall height of the equipment or consult your surfacing supply representative.
- (E) Exit height must be between 7" [180mm] and 15" [380mm] from finish grade for slides with an elevation greater than 48". For slide elevations no greater than 48", the exit height shall be no greater than 11". Exit region must also have a downward slope of 0 to 4°.

**FIGURE 1**  
60" Poly Wave Slide



## Step 1

Refer to Footing Layout and mark footing hole locations.  
Dig (1) Ø 12" and (1) 12" x 24" footing hole. Refer to Footing Detail for depth and details.

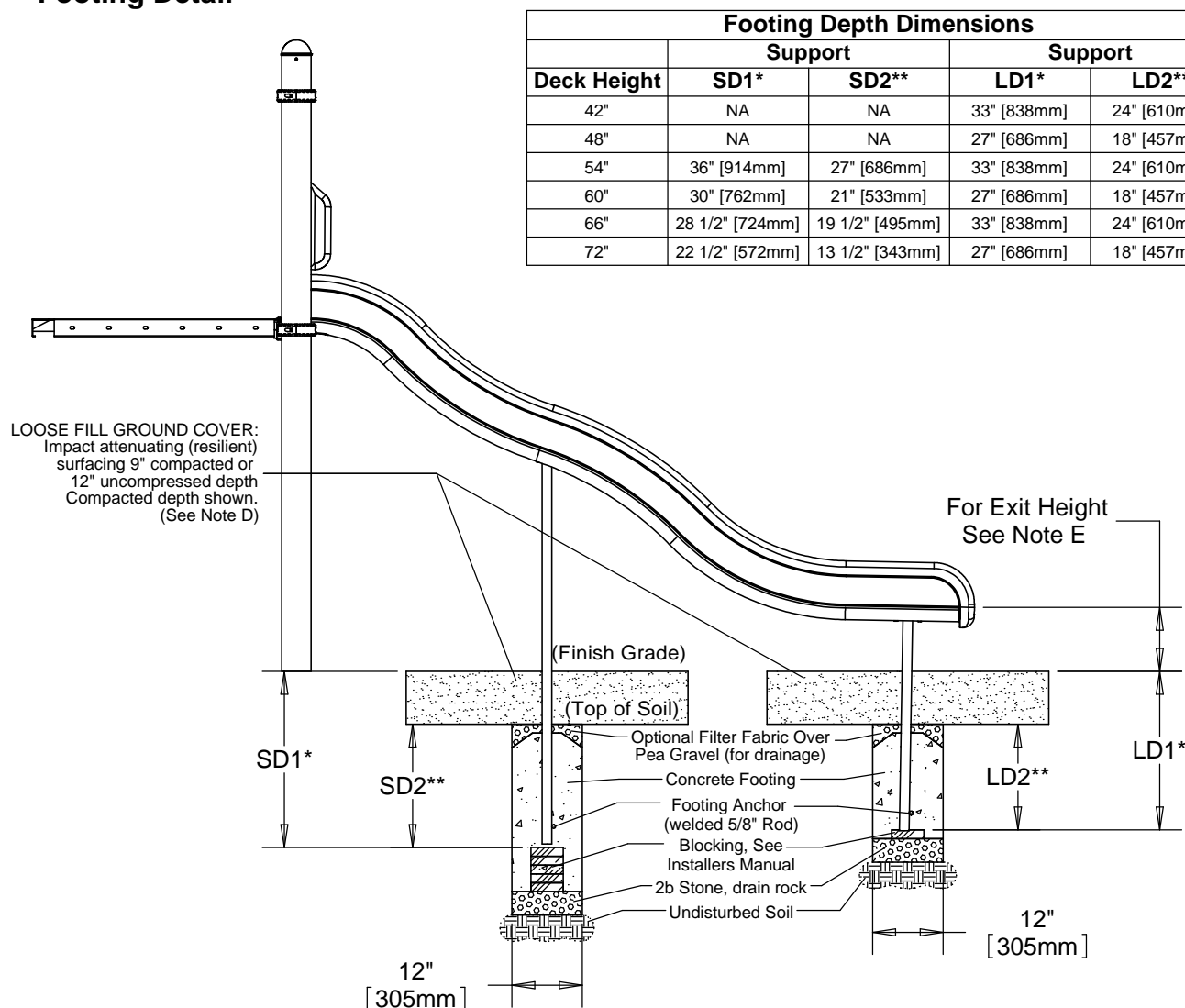
**Note:** For 48" Poly Wave Slide dig only (1) 12" x 24" footing hole.

**IMPORTANT:** For areas with soft soil conditions, larger footings may be required.

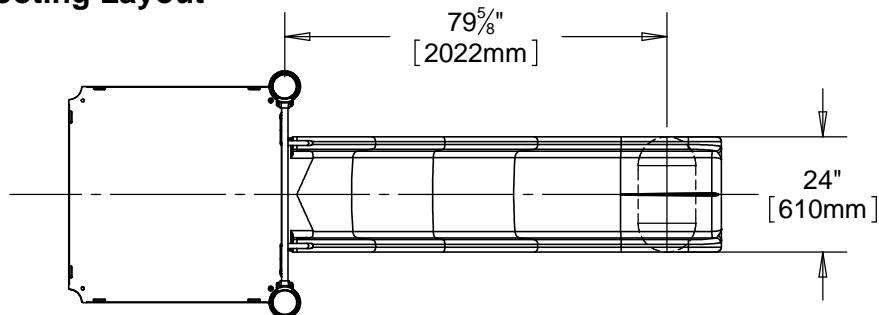
\* Footing depth must be adjusted to compensate for the depth/thickness requirements of selected safety surfacing.  
See Section 06.1 of the Installation Manual

\*\* Adjust footing depth with blocking to meet required slide exit height. (See Note E)

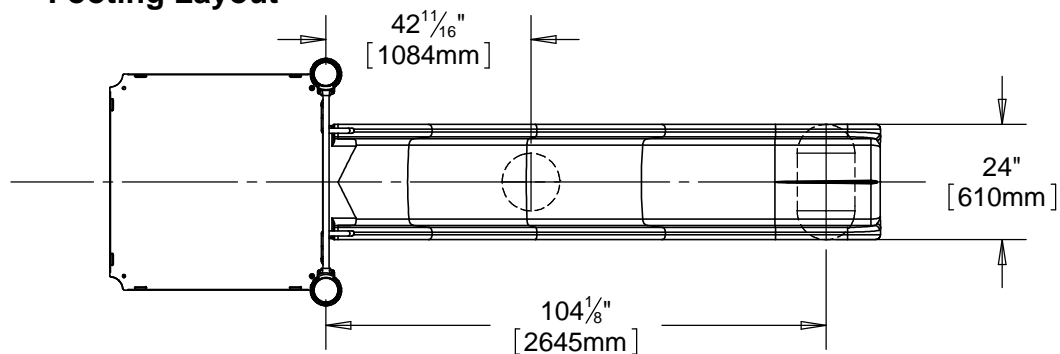
### Footing Detail



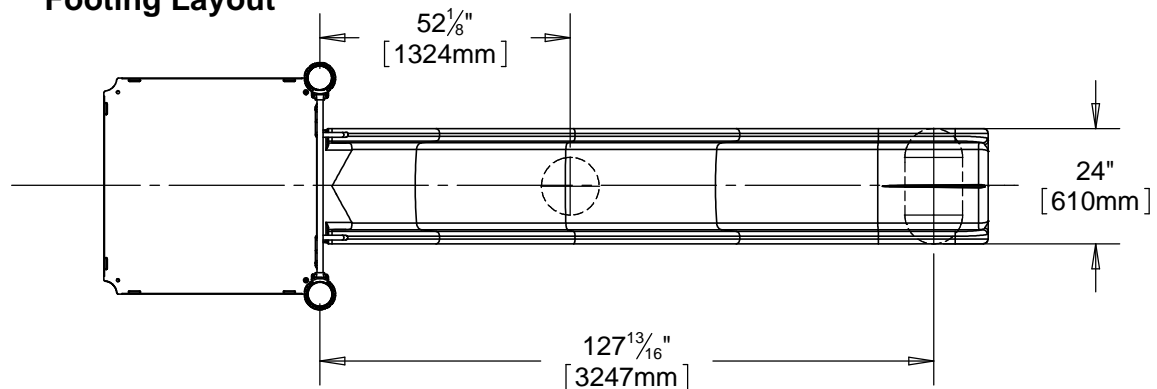
## 1704-4 - 48" Poly Wave Slide Footing Layout



## 1704-5 - 60" Poly Wave Slide Footing Layout



## 1704-6 - 72" Poly Wave Slide Footing Layout



## Step 2

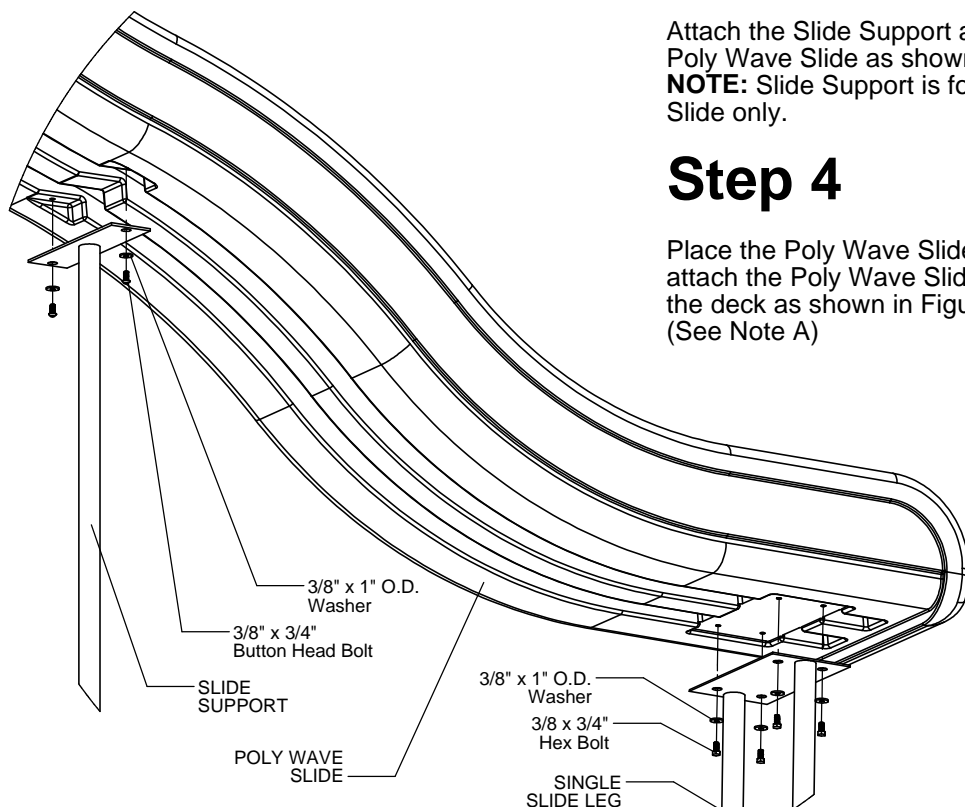
Attach the Slide Sit Down Wall to the deck and posts.  
(See Note C)

## Step 3

Attach the Slide Support and the Single Slide Leg to the Poly Wave Slide as shown in Figure 1.1. (See Note A)  
**NOTE:** Slide Support is for 60" and 72" Poly Wave Slide only.

## Step 4

Place the Poly Wave Slide in the footing hole(s) and attach the Poly Wave Slide and Single Slide Spacer to the deck as shown in Figure 1.2.  
(See Note A)



**Figure 1.1**

## Step 5

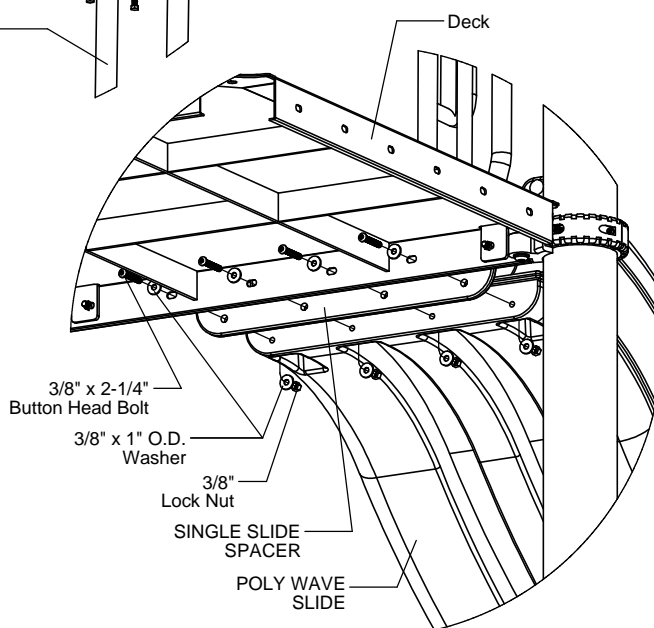
Fully tighten all fasteners according to the "TIGHTENING TORQUE FOR HARDWARE" section of the Installation Manual.

## Step 6

Plumb and level entire component. Pour concrete into footing hole. Allow at least 72 hours to cure before using this equipment. (See Note B and E)

## Step 7

Place appropriate compliant protective surfacing under and around Poly Wave Slide. (See Note D)



**Figure 1.2**

## Specifications

### SINGLE WAVE SLIDE:

Shall be constructed of UV-stabilized rotationally molded linear low density polyethylene with an average wall thickness of .250".

### SINGLE SLIDE SPACER:

Shall be made from high density 3/4" hot extruded polyethylene sheet plastic specially formulated for optimum UV stability and color retention.

### SINGLE SLIDE LEG:

Shall be fabricated of 1.660" O.D. 11 gauge steel tubing welded onto a 10 gauge steel plate. The Single Slide Leg has a multi-stage baked-on powder coat finish.

### SLIDE SUPPORT:

Shall be fabricated of 1.660" O.D. 11 gauge steel tubing welded onto a 3/16" steel plate. The Slide Support has a multi-stage baked-on powder coat finish.

### HARDWARE:

Shall be stainless steel, zinc/nickel plated or galvanized as required to resist rust and corrosion.

## Parts List

### 48" Poly Wave Slide

Part #	DESCRIPTION	QTY.
DE-4276	Poly Wave Slide 4' High	1
EE-0009	Single Slide Spacer Canada	1
FS-1701	Single Slide Leg	1
9103102-TR	Bolt Button Head 3/8" x 2-1/4"	4
9123032	Bolt Hex 3/8" x 3/4"	4
9333002	Washer Flat 3/8" x 1" O.D. x .100" thick	12
9413002	Nut Lock 3/8"	4

### 60" Poly Wave Slide

Part #	DESCRIPTION	QTY.
DE-4227	Poly Wave Slide 5' High	1
EE-0009	Single Slide Spacer Canada	1
FS-1701	Single Slide Leg	1
FS-1704	Wave Slide Support	1
9103032-TR	Bolt Button Head 3/8" x 3/4"	2
9103102-TR	Bolt Button Head 3/8" x 2-1/4"	4
9123032	Bolt Hex 3/8" x 3/4"	4
9333002	Washer Flat 3/8" x 1" O.D. x .100" thick	14
9413002	Nut Lock 3/8"	4

### 72" Poly Wave Slide

Part #	DESCRIPTION	QTY.
DE-4275	Poly Wave Slide 6' High	1
EE-0009	Single Slide Spacer Canada	1
FS-1701	Single Slide Leg	1
FS-1704	Wave Slide Support	1
9103032-TR	Bolt Button Head 3/8" x 3/4"	2
9103102-TR	Bolt Button Head 3/8" x 2-1/4"	4
9123032	Bolt Hex 3/8" x 3/4"	4
9333002	Washer Flat 3/8" x 1" O.D. x .100" thick	14
9413002	Nut Lock 3/8"	4

## Maintenance

Periodically tighten all screws, bolts and nuts. A periodic inspection of all parts is necessary. If a part is broken or worn, replace immediately. For general maintenance please refer to our Playground Maintenance Manual.



Manufactured by Krauss Craft, Inc.  
www.playcraftsystems.com

For Customer Service Call  
800.333.8519 (U.S.A.) or  
541.955.9199 (International)

Rev B  
7/18/2009