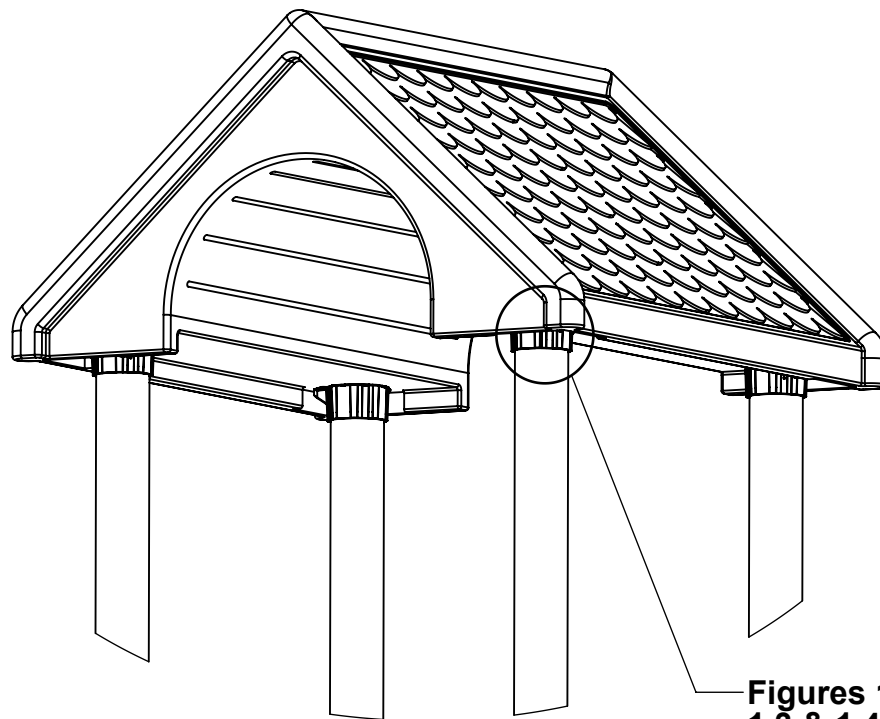


IMPORTANT NOTES: Read First

(A) Use liquid thread lock (such as Loctite®) with all threaded hardware. **Important:** Liquid thread lock (prior to curing) helps to eliminate the common problem of "thread seizure" in stainless steel hardware by serving as a lubricant during assembly.

(B) Caution must be given to toggle installation as part may become fragile during insertion and final securing.

FIGURE 1
Poly Gable Roof



**Figures 1.1, 1.2,
1.3 & 1.4**

NOTE: R5 Poly Gable Roof shown. Other configurations will vary slightly, but does not affect assembly.

Step 1

Place Roof Support Castings on Posts and place Roof on Support Casting. Orient Support Castings as indicated, mark and match drill 3/4" holes at casting ears as shown in Figure 1.1

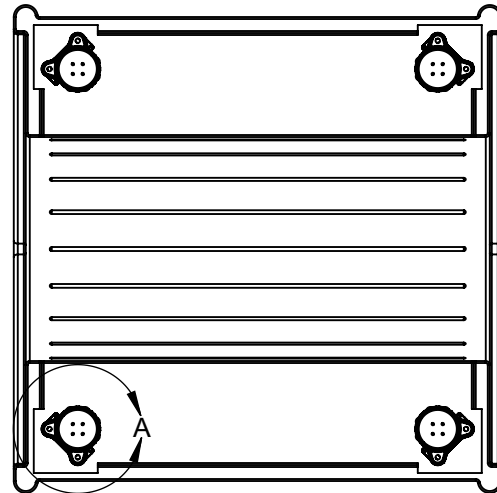
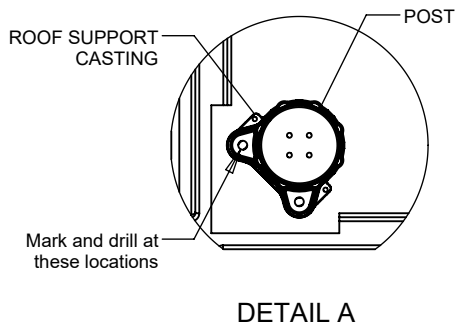


Figure 1.1

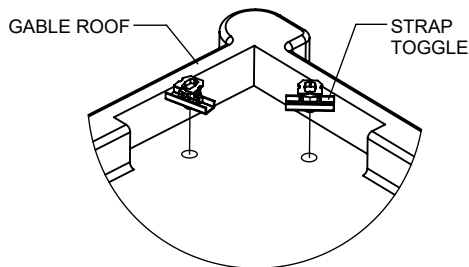


Figure 1.2

Step 2

Insert Strap Toggles as shown in Figure 1.2.
(See Note B)

Step 3

Attach Roof Support Casting to Gable Roof as shown in Figure 1.3. (See Note A & B)

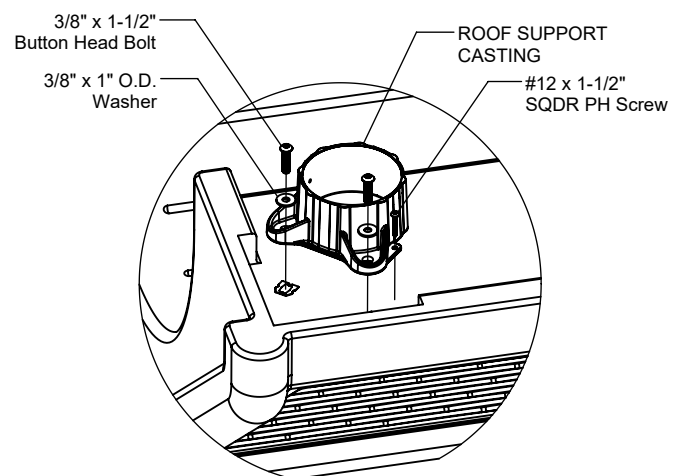


Figure 1.3

Step 4

Attach Posts to Roof Support Castings as shown in Figure 1.4. (See Note A)

Step 5

Fully tighten all fasteners according to the "TIGHTENING TORQUE FOR HARDWARE" section of the Installation Manual.

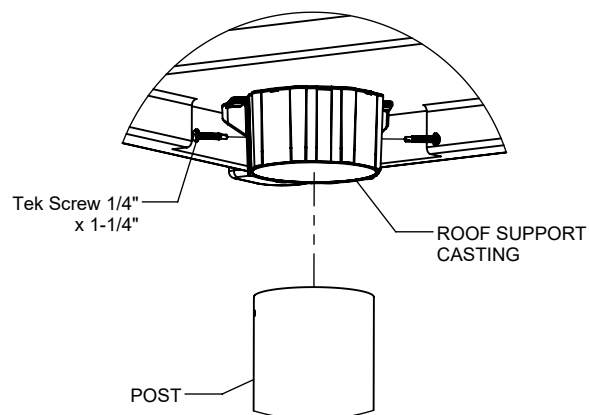


Figure 1.4

Parts Lists

R5 POLY GABLE ROOF		
Part #	DESCRIPTION	QTY
DE-4328	Poly Gable Roof	1
GF-7163	Roof Support Casting 2-Ear R5	4
9103072-TR	Bolt Button Head 3/8" x 1-1/2"	8
9221272	Screw #12 x 1-1/2" SQDR PH	8
9271062-TR	1/4" x 1-1/4" Tek Screw	8
9333002	Washer Flat 3/8" x 1" O.D. x .100" thick	8
9643160	Strap Toggle 3/8"-16	8

R35 POLY GABLE ROOF		
Part #	DESCRIPTION	QTY
DE-4328	Poly Gable Roof	1
GG-8164	Roof Casting 2-Ear R3.5	4
9103072-TR	Bolt Button Head 3/8" x 1-1/2"	8
9221272	Screw #12 x 1-1/2" SQDR PH	8
9271062-TR	1/4" x 1-1/4" Tek Screw	8
9333002	Washer Flat 3/8" x 1" O.D. x .100" thick	8
9643160	Strap Toggle 3/8"-16	8

Specifications

POLY GABLE ROOF:

Shall be constructed of UV-stabilized, rotationally molded, linear, low density polyethylene with an average wall thickness of .250".

ROOF SUPPORT CASTING:

Shall be precision die-cast from a high strength aluminum alloy and will have a multi-stage baked-on powder coat finish.

HARDWARE:

Shall be stainless steel, zinc/nickel plated or galvanized as required to resist rust and corrosion.

Maintenance

Periodically tighten all screws, bolts and nuts. A periodic inspection of all parts is necessary. If a part is broken or worn, replace immediately. For general maintenance please refer to our Playground Maintenance Manual.