

Installation Sheet for IP12 Wheelspin



IP12 Wheelspin Range



Standard



Wildlife



Playful with Smiley Face



Bubbles



Wildlife Silver



Playful with Bubbles

Product Name	Wheelspin
Product Code	IP12
Document Release Date	14/09/2022
Document Rev	2
Total Install Hours	6 Hours

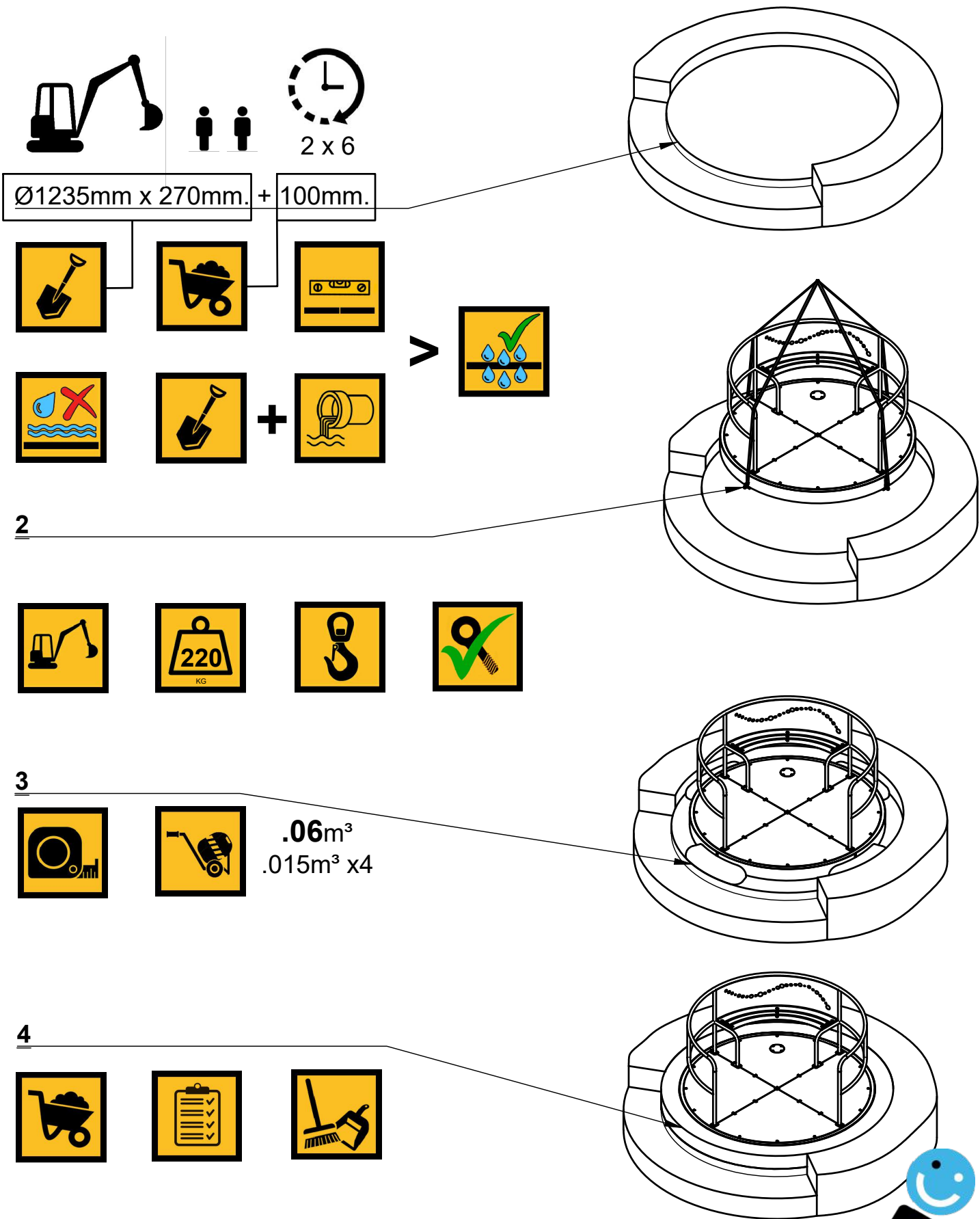
Probe Supplied

Call us +44(0)131 214 1180

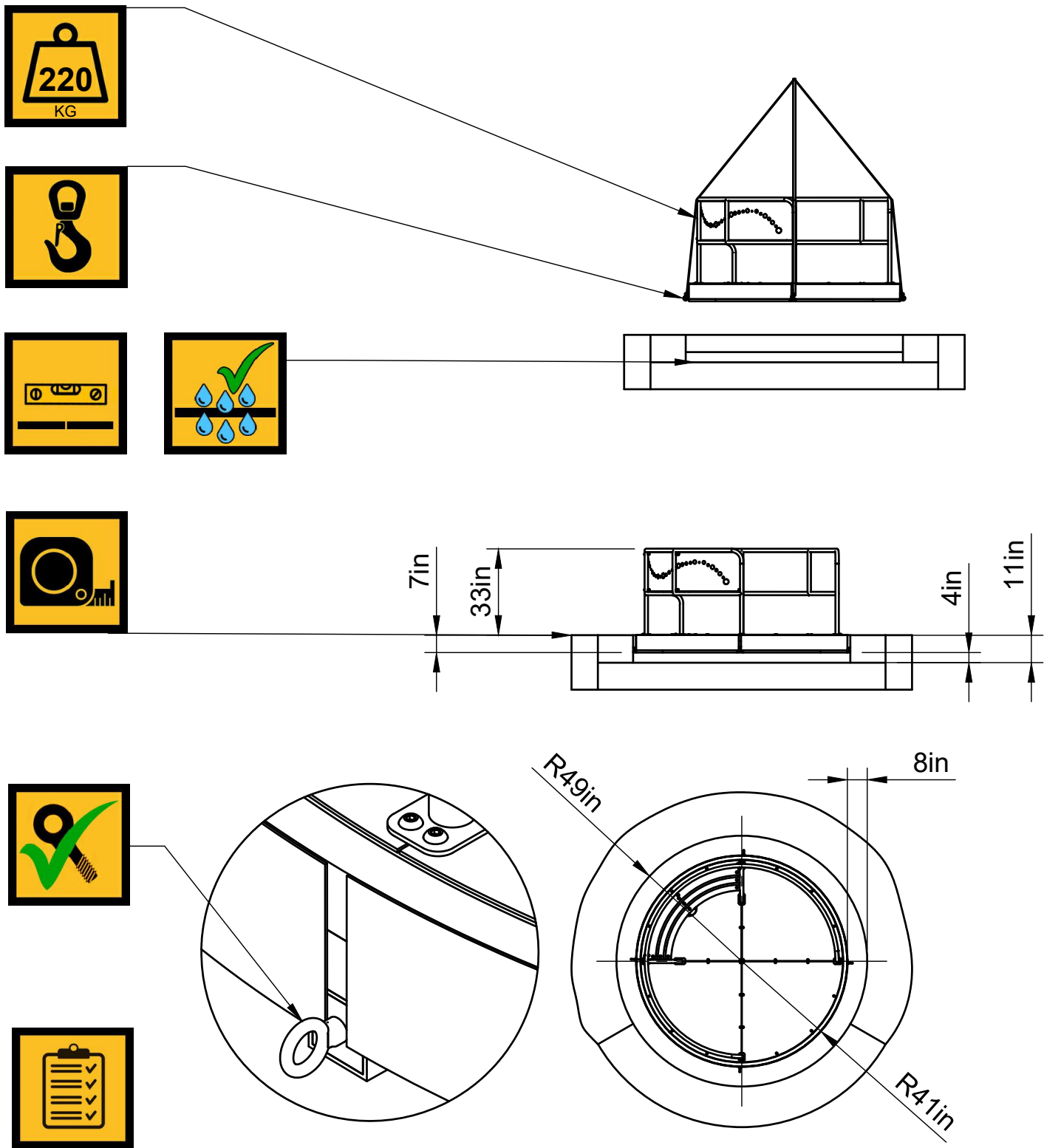
www.inclusiveplay.com info@inclusiveplay.com © Copyright 2022 Inclusive Play (UK) Limited



Installation Sheet for IP12 Wheelspin



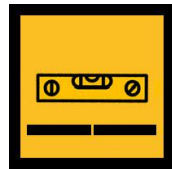
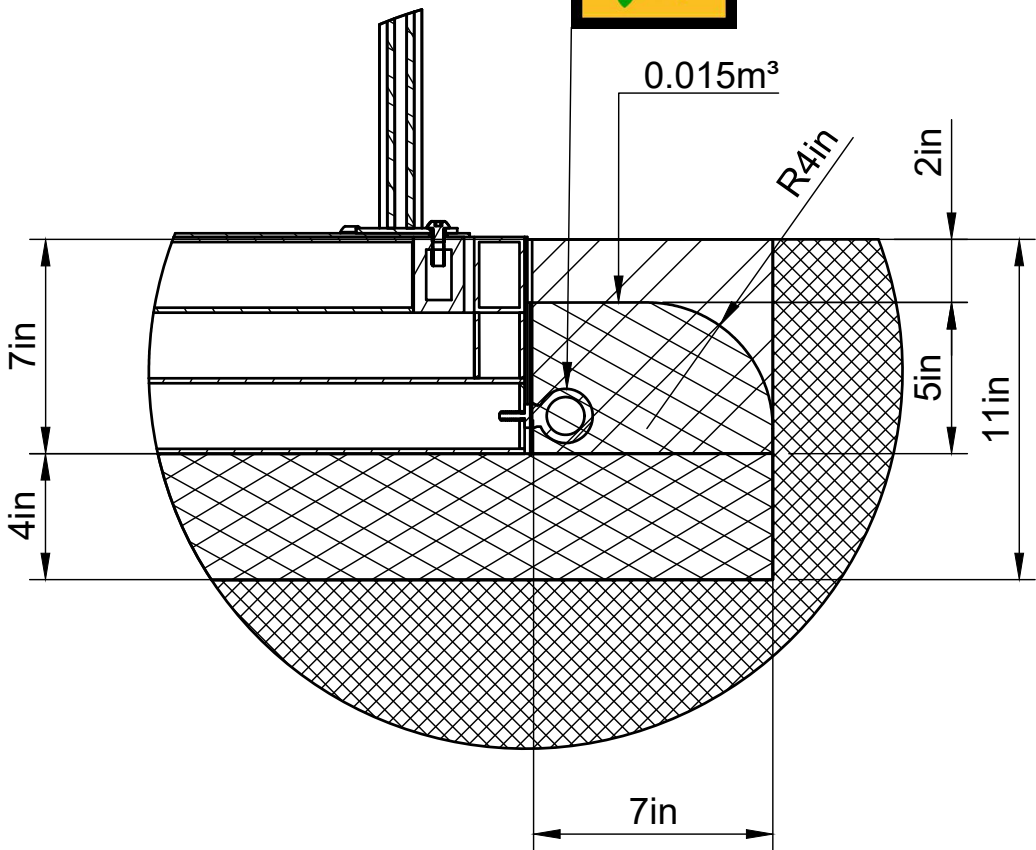
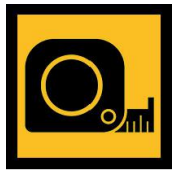
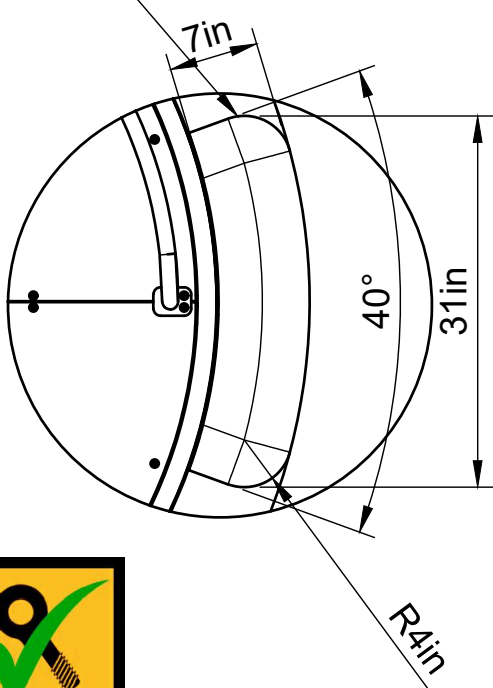
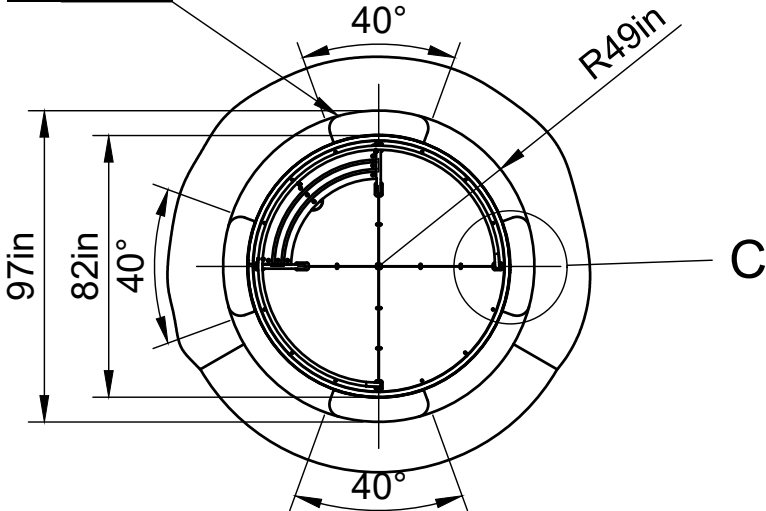
Installation Sheet for IP12 Wheelspin



Installation Sheet for IP12 Wheelspin



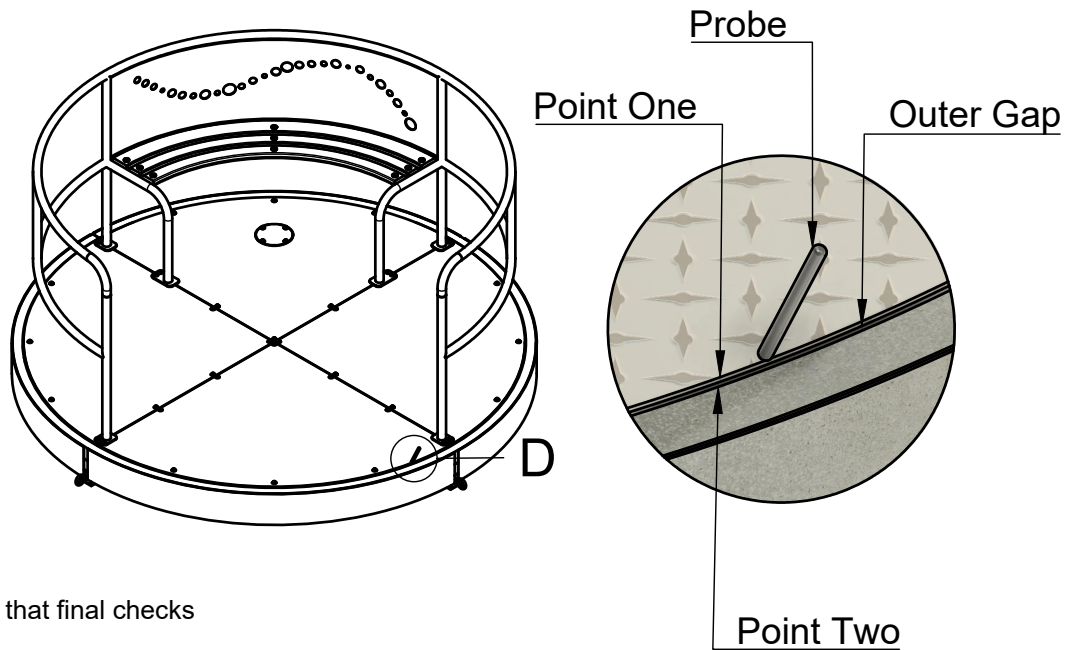
.06m³
.015m³ x4



Call us +44(0)131 214 1180

www.inclusiveplay.com info@inclusiveplay.com © Copyright 2022 Inclusive Play (UK) Limited

Post install checks



Following installation, it is vital that final checks are carried out.

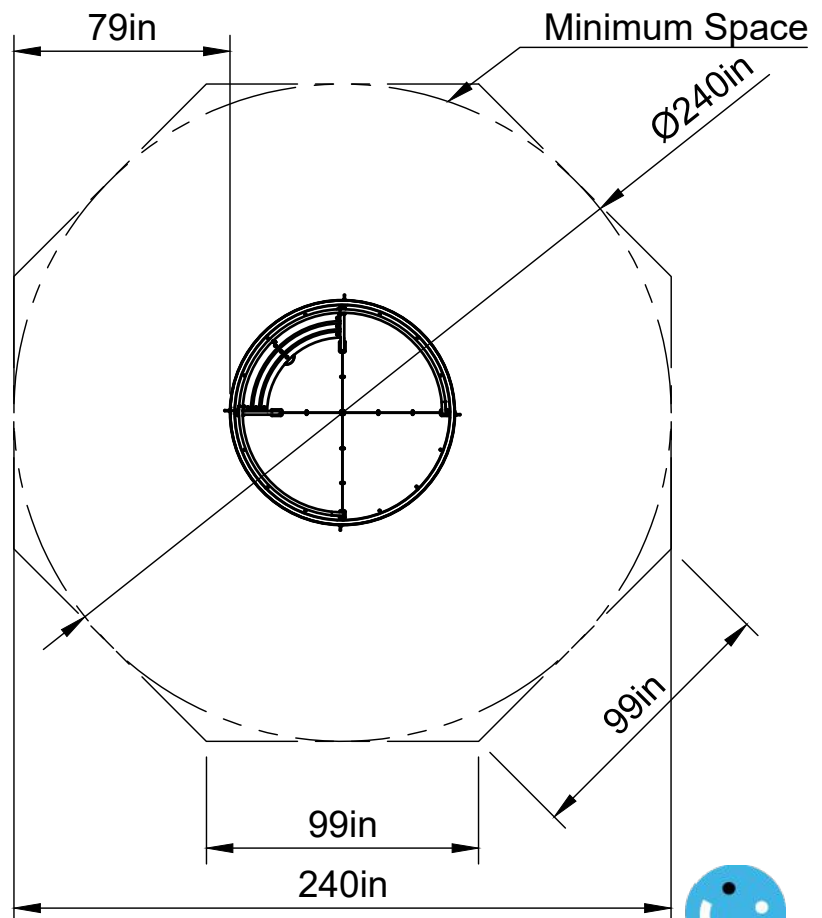
- Ensure the rotation of the carousel runs smoothly.
- Check all fixings are secured tightly.
- Slowly rotate the carousel and using the probe, ensure the gap between **Point One** and **Point Two** does not exceed 8mm anywhere on along the **Outer Gap**.

Adjustments

Only if required, adjustments can be carried out by loosening off the fixings on the Tread Plates and adjusting the positioning of the Tread Plates where necessary. This will help reduce any gaps along the Outer Gap that exceed 8mm.

Only if required, Further alterations can be carried out by adjusting the top section placement on the Bearing. To do this, remove the Top Frame and Tread Plates, loosen the fixings connecting the Top Frame to the Bearing. This will allow you to make any slight movements of the position of the Top Frame.

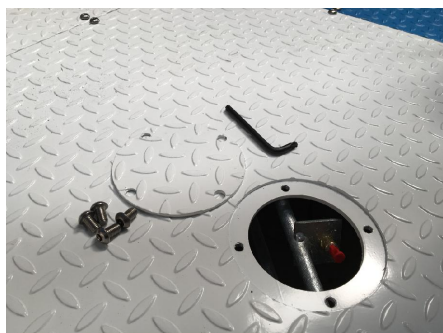
Ensure any final adjustments made meet the standards. Once complete, tighten the inner section and then reattach the Tread Plates and Top Rail. Ensure all fixings are secured tightly.



Installation Sheet for IP12 Wheelspin

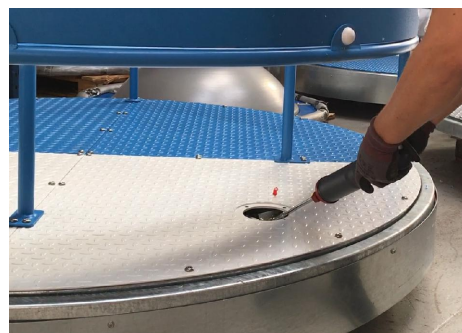
BEARING MAINTENANCE

Step One



Inspection hatch located under Seat.
Attached by 4 x Security Screws

Step Two



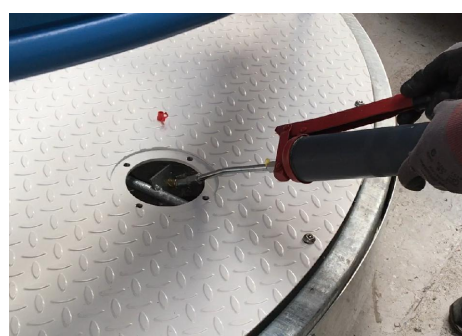
Fill the grease gun with waterproof grease tube and attach the grease gun to the nipple.

Step Three



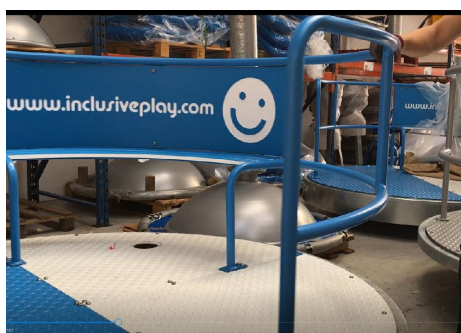
Pump the grease gun, whilst slowly rotating the carousel.

Step Four



Continue to do this until the grease gun is empty.

Step Five



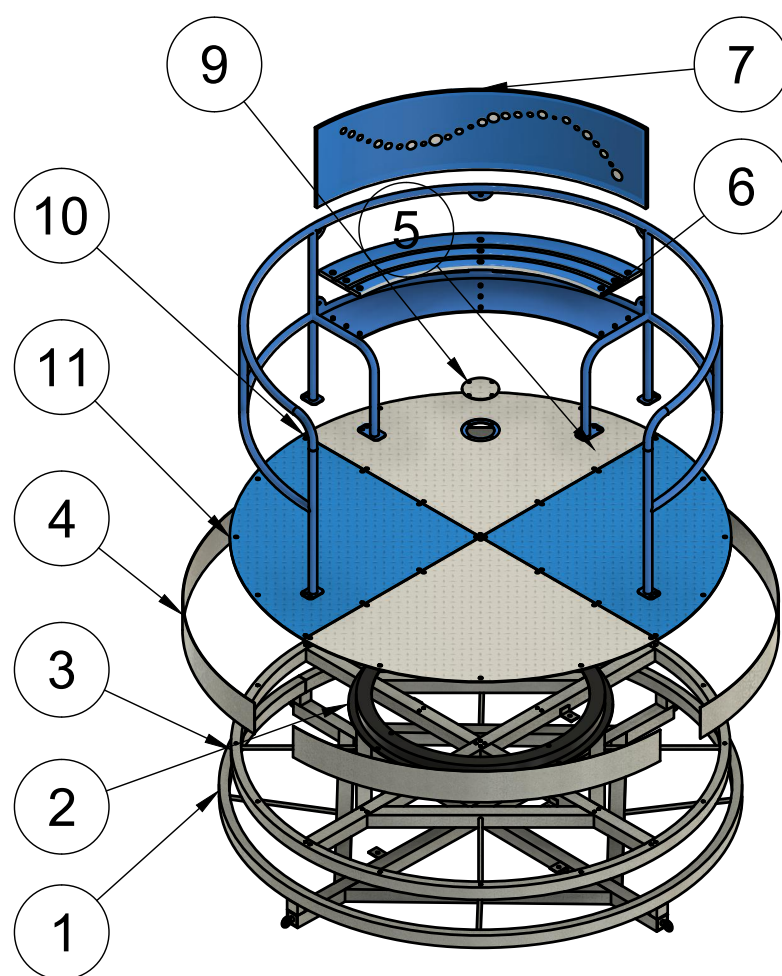
Spin the carousel for a few minutes to allow the grease to settle into the bearing.

Step Six



Ensure the inspection hatch is put securely back in place.





Parts List		
Item	Qty	Part Number
1	1	Outer-Ring-Assembly
2	1	IP12-Bearing
3	1	Inner-Ring-Assembly
4	4	IPME57-A-Skirting
5	1	Top-Steel-Frame-Assembly
6	1	IPPL2-A-Seat
7	1	HDPE-Bubbles-Back
9	1	Durbar-Access-Disc
10	1	Durbar-Access-3mm
11	3	Durbar-3mm



Installation Sheet for IP12 Wheelspin

SPECIFICATIONS

Base frame :	Manufactured from 60 x 60 SHS and 60 x 30 RHS
Inner frame :	Manufactured from 60 x 60 SHS and 60 x 30 RHS
Bearing :	JOST1050N
Floor quadrants :	3mm durbar floor quadrant
Handrail :	Manufactured from 43mm CHS
Seat plate :	Tamper proof zinc plated
Welding :	Copper free wire to BS EN440
Finish :	Zinc primed and polyester powder coated
Type of use :	External use only

NOTES

- 1 : Lifting assistance required.
- 2 : Only use genuine spare parts available from Inclusive Play.
- 3 : Remove all installation equipment before first use.
- 4 : Care must be taken under abnormal conditions to ensure sufficient foundation depth is available.
- 5 : Wheelspin must be installed into level ground.

ROUTINE VISUAL AND OPERATIONAL INSPECTIONS TO BSEN1176.6.4

- 1 : Carried out every 3 months. The frequency of inspection will vary depending upon the type of equipment or material used and other factors e.g. Heavy use, levels of vandalism, coastal location, air pollution and age of equipment.
- 2 : Check general structural integrity and for any loose fixing bolts, tighten if necessary.
- 3 : Check paint work for damage, touch up if required (Paint available from Inclusive Play).
- 4 : Check for excessive wear on any parts.
- 5 : On rotation of unit listen for any abnormal noise from bearing.
- 6 : Check surfacing for excessive wear or damage.
- 7 : If subject to heavy use of vandalism daily inspection recommended checking for loose/ dangerous parts, clearances, ground surfaces, sharp objects, missing parts, excessive wear, check cleanliness of equipment on site.

MAIN INSPECTION

- 1 : Carried out annually.
- 2 : Close off surrounding area to create safe environment during maintenance and apply warning signs.
- 3 : Remove handrail.
- 4 : Remove floor quadrants.
- 5 : Check bearing for excessive wear, replace if required.
- 6 : Apply a good quality waterproof grease to bearing at all grease points.
- 7 : Refit floor quadrants and replace any bolts if damaged.
- 8 : Refit handrail.
- 9 : Check for smooth operation.

