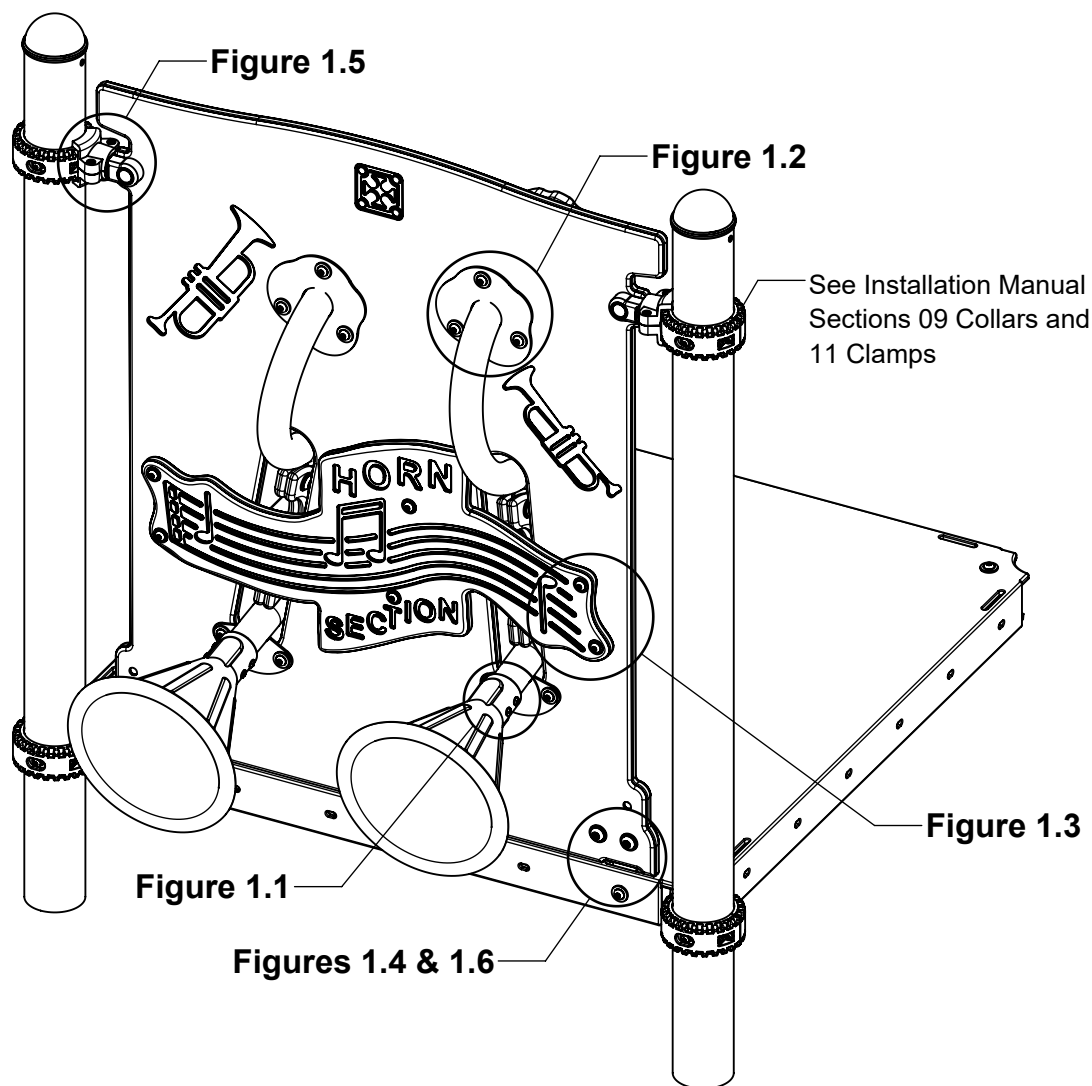


IMPORTANT NOTES: Read First

(A) Use liquid thread lock (such as Loctite®) with all threaded hardware. **Important:** Liquid thread lock (prior to curing) helps to eliminate the common problem of "thread seizure" in stainless steel hardware by serving as a lubricant during assembly.

(B) Refer to Installation Manual for 09 Collars, 11 Socket Clamps installation instructions.

FIGURE 1
Horn Panel R35



NOTE: Horn Panel R35 Deck Mount shown. Other configurations will vary slightly, but does not affect assembly.

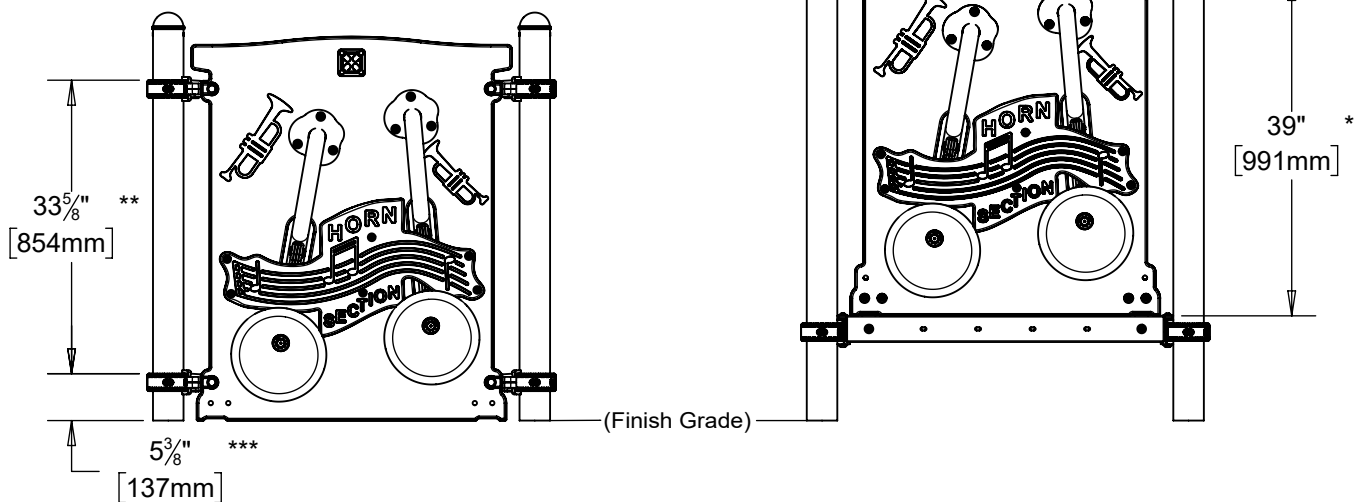
Step 1

Locate and attach collars at heights shown in Elevation View. (See Note B)

* Height shown from top of deck to top of collar.

** Height shown from top of collar to top of collar.

*** Height shown from finish grade to top of collar.



Step 2 (Factory Assembled)

Attach Mouth Piece Base and Mouth Piece to Mouth Piece Weldment as shown in Figure 2. (See Note A)

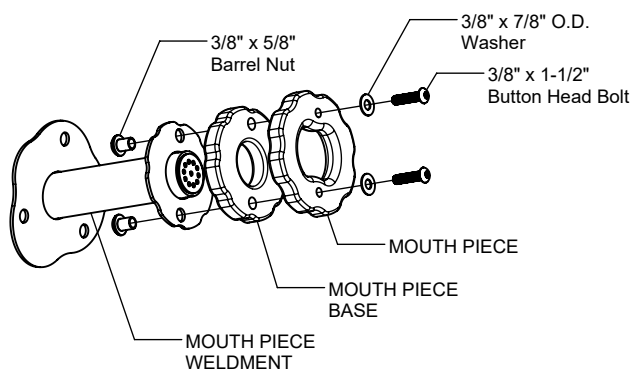


FIGURE 2

Step 3 (Factory Assembled)

Attach Horn Tube Blockers to Lower Horn Weldment as shown in Figure 3. (See Note A)

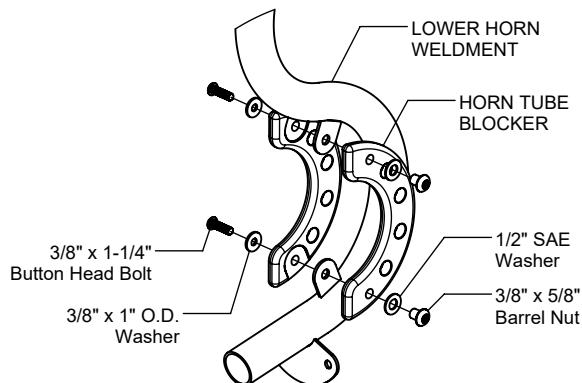


FIGURE 3

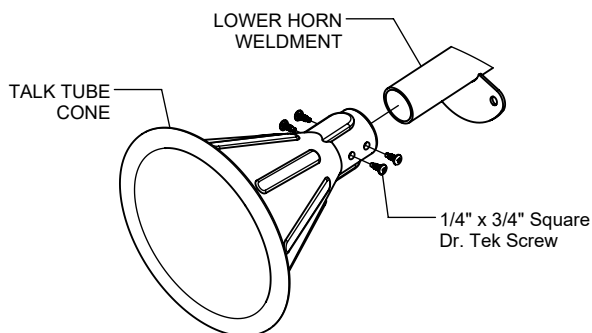


Figure 1.1

Step 4 (Factory Assembled)

Attach Talk Tube Cone to Lower Horn Weldment as shown in Figure 1.1. (See Note A)

Step 5 (Factory Assembled)

Attach Talk Tube Weldment and Mouth Piece Weldment to Horn Panel as shown in Figure 1.2. (See Note A)

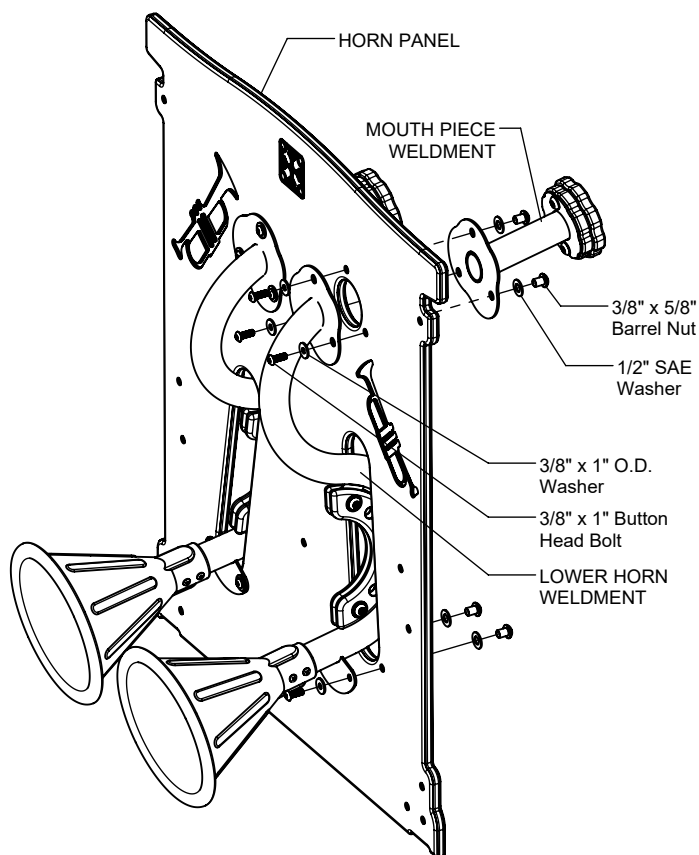


Figure 1.2

Step 6 (Factory Assembled)

Attach Horn Panel Trim to Horn Panel as shown in Figure 1.3. (See Note A)

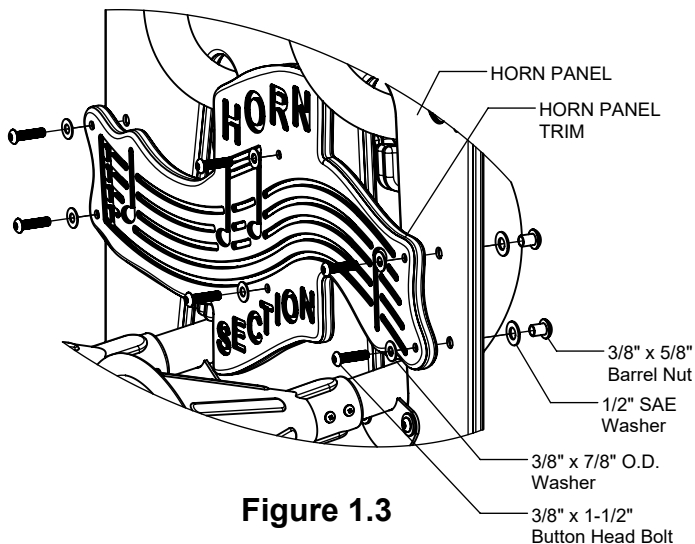


Figure 1.3

Step 7

For Deck Mount Only

Attach Bracket to Panel as shown in Figure 1.4. (See Note A)

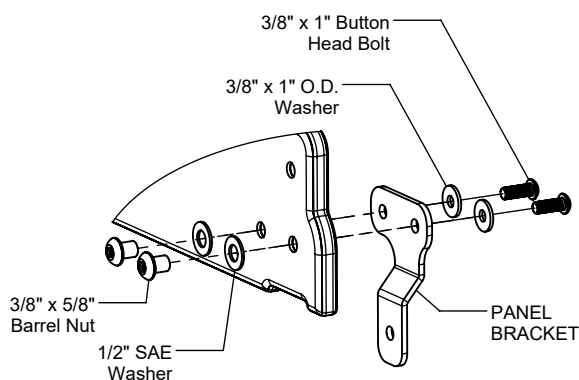


Figure 1.4

Step 8

Attach Panel to Collar as shown in Figure 1.5. (See Note A)

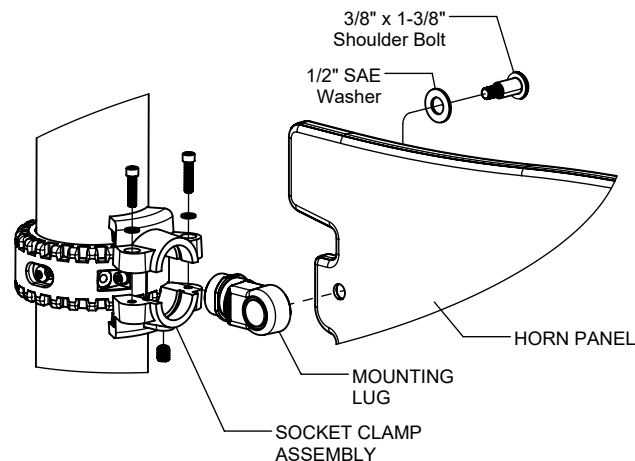


Figure 1.5

Step 9

For Deck Mount Only

Attach Panel to Deck as shown in Figure 1.6. (See Note A)

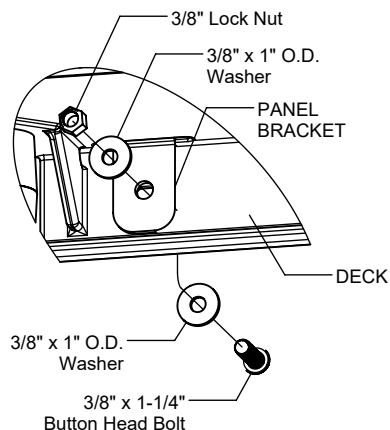


Figure 1.6

Step 10

Fully tighten all fasteners according to the "TIGHTENING TORQUE FOR HARDWARE" section of the Installation Manual.

HORN PANEL INSTALLATION INSTRUCTIONS

1678
Page 5 of 6

Parts List

R35 DECK MOUNT		
PART #	DESCRIPTION	QTY
BE-0361-L	R35 Panel Bracket - Left	1
BE-0361-R	R35 Panel Bracket - Right	1
GG-8113	Mounting Lug R3.5	2
HS-1001-R35	Socket Clamp Set R3.5	2
9103052-TR	Bolt Button Head 3/8" x 1"	4
9103062-TR	Bolt Button Head 3/8" x 1-1/4"	2
9143062-TR	Bolt Shoulder 3/8" x 1-3/8" BH	2
9333002	Washer Flat 3/8" x 1" O.D. x .100" thick	8
9345002	Washer Flat SAE 1/2"	6
9413002	Nut Lock 3/8"	2
9443022-TR	Nut Barrel 3/8" x 5/8" BH	4

R35 GROUND MOUNT		
PART #	DESCRIPTION	QTY
HS-1001-R35	Socket Clamp Set R3.5	4
GG-8113	Mounting Lug R3.5	4
9143062-TR	Bolt Shoulder 3/8" x 1-3/8" BH	4
9345002	Washer Flat SAE 1/2"	4

R5 DECK MOUNT		
PART #	DESCRIPTION	QTY
AF-7118	Flat Panel Bracket (R5)	2
GF-7007	Mounting Lug R5	2
HS-1001-R5	Socket Clamp Set R5	2
9103052-TR	Bolt Button Head 3/8" x 1"	4
9103062-TR	Bolt Button Head 3/8" x 1-1/4"	2
9333002	Washer Flat 3/8" x 1" O.D. x .100" thick	8
9345002	Washer Flat SAE 1/2"	4
9413002	Nut Lock 3/8"	2
9443022-TR	Nut Barrel 3/8" x 5/8" BH	4

R5 GROUND MOUNT		
PART #	DESCRIPTION	QTY
GF-7007	Mounting Lug R5	4
HS-1001-R5	Socket Clamp Set R5	4
9143062-TR	Bolt Shoulder 3/8" x 1-3/8" BH	4
9345002	Washer Flat SAE 1/2"	4

Assembled Parts List

R35 HORN PANEL		
PART #	DESCRIPTION	QTY
DE-4093	Talk Tube Cone	2
EE-0012-TB	Horn Panel Tube Blocker	4
EE-0012-TMB	Horn Panel Mouth Piece Base	2
EE-0012-TMC	Horn Panel Mouth Piece	2
EE-0012-TRM	Horn Panel Trim	1
EG-0012-PNL	Horn Panel R3.5	1
FS-1678-RH	Main Horn Weldment	2
FS-1678-MP	Mouth Piece Weldment	2
9103052-TR	Bolt Button Head 3/8" x 1"	10
9103062-TR	Bolt Button Head 3/8" x 1-1/4"	4
9103072-TR	Bolt Button Head 3/8" x 1-1/2"	10
9271032	Screw Tek 1/4" x 3/4" PH SQDR	8
9333002	Washer Flat 3/8" x 1" O.D. x .100" thick	14
9333042	Washer Flat 3/8" x 7/8" O.D.	10
9345002	Washer Flat SAE 1/2"	20
9443022-TR	Nut Barrel 3/8" x 5/8" BH	24

R5 HORN PANEL		
PART #	DESCRIPTION	QTY
DE-4093	Talk Tube Cone	2
EE-0012-TB	Horn Panel Tube Blocker	4
EE-0012-TMB	Horn Panel Mouth Piece Base	2
EE-0012-TMC	Horn Panel Mouth Piece	2
EE-0012-TRM	Horn Panel Trim	1
EF-0012-PNL	Horn Panel	1
FS-1678-RH	Main Horn Weldment	2
FS-1678-MP	Mouth Piece Weldment	2
9103052-TR	Bolt Button Head 3/8" x 1"	10
9103062-TR	Bolt Button Head 3/8" x 1-1/4"	4
9103072-TR	Bolt Button Head 3/8" x 1-1/2"	10
9271032	Screw Tek 1/4" x 3/4" PH SQDR	8
9333002	Washer Flat 3/8" x 1" O.D. x .100" thick	14
9333042	Washer Flat 3/8" x 7/8" O.D.	10
9345002	Washer Flat SAE 1/2"	20
9443022-TR	Nut Barrel 3/8" x 5/8" BH	24



www.playcraftsystems.com
For Customer Service Call
800.333.8519 (U.S.A.) or 541.955.9199 (International)

Rev C
10/24/2024

Specifications

HORN PANEL, TRIM, BLOCKER & MOUTH PIECE COMPONENTS:

Shall be made from high density 3/4" sheet plastic specially formulated for optimum UV stability and color retention.

MAIN HORN WELDMENT & MOUTH PIECE WELDMENT:

Shall be fabricated using Ø1.900 11ga steel tubing, 10ga sheet steel and 14ga AISI 304 stainless steel and will have a multi-stage baked-on powder coat finish.

PANEL BRACKET:

Shall be fabricated using 3/16" sheet steel and will have a multi-stage baked-on powder coat finish.

TALK TUBE CONE:

Shall be constructed of UV-stabilized, rotationally molded, linear, low density polyethylene with an average wall thickness of .250".

MOUNTING LUGS & SOCKET CLAMPS:

Shall precision die-cast from a high strength aluminum alloy and will have a multi-stage baked-on powder coat finish.

HARDWARE:

Shall be stainless steel, zinc/nickel plated or galvanized as required to resist rust and corrosion.

Maintenance

Periodically tighten all screws, bolts and nuts. A periodic inspection of all parts is necessary. If a part is broken or worn, replace immediately. For general maintenance please refer to our Playground Maintenance Manual.