

## **IMPORTANT NOTES: Read First**

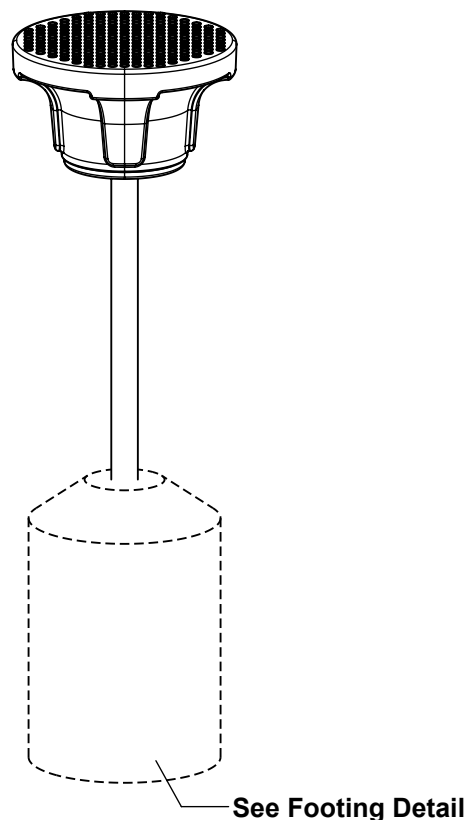
(A) Use liquid thread lock (such as Loctite®) with all threaded hardware. **Important:** Liquid thread lock (prior to curing) helps to eliminate the common problem of "thread seizure" in stainless steel hardware by serving as a lubricant during assembly.

(B) Do not pour concrete until the equipment is completely assembled, leveled and plumbed. Concrete must be allowed to cure completely before using the equipment (at least 72 hours).

(C) When installing multiple steps, the distance between steps varies by age group: Ages 2-5: 12" [305mm] apart. Ages 5-12: 18" [457mm] apart.

(D) An appropriate energy absorbing safety surface is required under and around all playground equipment. Loose fill protective surfacing is shown only as an example for the purpose of this assembly instruction. Other surfacing material may vary in thickness and/or compression depths. See free publication - The Handbook for Public Playground Safety, Publication #325 at [www.cpsc.gov](http://www.cpsc.gov) for the surfacing appropriate for the fall height of the equipment or consult your surfacing supply representative.

**FIGURE 1**  
Lily Pad Seat-Step



## Step 1

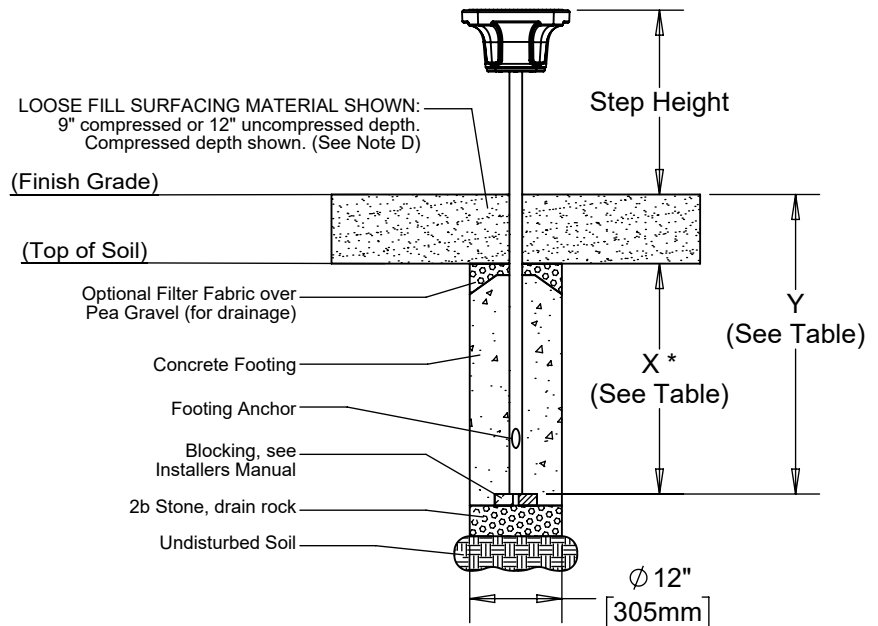
Refer to Post Footings Layout in the Playground Equipment Manual and mark footing hole location.

Dig (1) Ø 12" footing hole. Refer to Footing Detail for depth and details.

**IMPORTANT:** For areas with soft soil conditions, larger footings may be required.

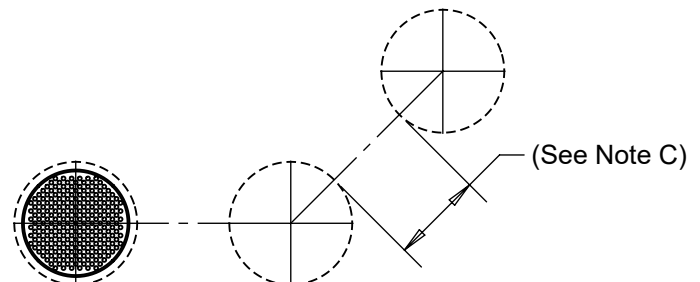
\* Footing depth must be adjusted to compensate for the depth/thickness requirements of selected safety surfacing. See Section 06.1 of the Installation Manual.

### Footing Detail



Footing Depth Table Top of Soil to Top of Blocking				
Step Height	X (in.) *	X (mm) *	Y (in.)	Y (mm)
12"	18"	457	27"	686
15"	18"	457	27"	686
18"	18"	457	27"	686
21"	18"	457	27"	686
24"	30"	762	39"	991
30"	30"	762	39"	991
39"	30"	762	39"	991

### Top View Lily Pad Seat-Step Orientation



## Step 2

Attach Lily Pad to Step Pad Leg as shown in Figure 2. (See Note A)

## Step 3

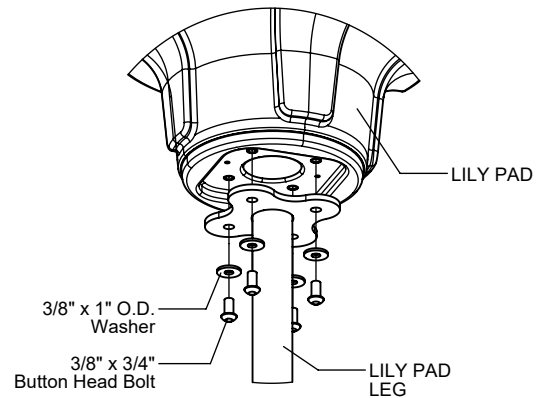
Fully tighten all fasteners according to the "TIGHTENING TORQUE FOR HARDWARE" section of the Installation Manual.

## Step 4

Place Lily Pad Seat-Step into footing hole. Plumb and level entire component. Pour concrete into footing hole. Allow at least 72 hours to cure before using this equipment. (See Note B)

## Step 5

Place required protective surfacing under and around Lily Pad Seat-Step. (See Note D)



**FIGURE 2**

# LILY PAD SEAT-STEP ASSEMBLY INSTALLATION INSTRUCTIONS

**1414-1**  
Page 4 of 4

## Parts List

S-1414-12		
PART #	DESCRIPTION	QTY
DE-4367	Lily Pad No Hole	1
FS-1414-LEG	Lily Pad Step Leg	1
9103032-TR	Bolt Button Head 3/8" x 3/4"	4
9333002	Washer Flat 3/8" x 1" O.D. x .100" thick	4

S-1414-15		
PART #	DESCRIPTION	QTY
DE-4367	Lily Pad No Hole	1
FS-1414-LEG15	Lily Pad Step Leg 15"	1
9103032-TR	Bolt Button Head 3/8" x 3/4"	4
9333002	Washer Flat 3/8" x 1" O.D. x .100" thick	4

S-1414-18		
PART #	DESCRIPTION	QTY
DE-4367	Lily Pad No Hole	1
FS-1414-LEG18	Lily Pad Step Leg 18"	1
9103032-TR	Bolt Button Head 3/8" x 3/4"	4
9333002	Washer Flat 3/8" x 1" O.D. x .100" thick	4

S-1414-21		
PART #	DESCRIPTION	QTY
DE-4367	Lily Pad No Hole	1
FS-1414-LEG21	Lily Pad Step Leg 21"	1
9103032-TR	Bolt Button Head 3/8" x 3/4"	4
9333002	Washer Flat 3/8" x 1" O.D. x .100" thick	4

S-1414-24		
PART #	DESCRIPTION	QTY
DE-4367	Lily Pad No Hole	1
FS-1414-LEG24	Lily Pad Step Leg 24"	1
9103032-TR	Bolt Button Head 3/8" x 3/4"	4
9333002	Washer Flat 3/8" x 1" O.D. x .100" thick	4

S-1414-30		
PART #	DESCRIPTION	QTY
DE-4367	Lily Pad No Hole	1
FS-1414-LEG30	Lily Pad Step Leg 30"	1
9103032-TR	Bolt Button Head 3/8" x 3/4"	4
9333002	Washer Flat 3/8" x 1" O.D. x .100" thick	4

S-1414-39		
PART #	DESCRIPTION	QTY
DE-4367	Lily Pad No Hole	1
FS-1414-LEG39	Lily Pad Step Leg 39"	1
9103032-TR	Bolt Button Head 3/8" x 3/4"	4
9333002	Washer Flat 3/8" x 1" O.D. x .100" thick	4

## Specifications

### LILY PAD NO HOLE:

Shall be constructed of UV-stabilized, rotationally molded, linear, low density polyethylene with an average wall thickness of .250".

### STEP PAD STEP LEG:

Shall be fabricated using 1.660" O.D. 11 gauge steel tubing with welded 1/4" thick steel mounting plate and will have a multi-stage baked-on powder coat finish.

### HARDWARE:

Shall be stainless steel, zinc/nickel plated or galvanized as required to resist rust and corrosion.

## Maintenance

Periodically tighten all screws, bolts and nuts. A periodic inspection of all parts is necessary. If a part is broken or worn, replace immediately. For general maintenance please refer to our Playground Maintenance Manual.