

## IMPORTANT NOTES: Read First

(A) Use liquid thread lock (such as Loctite®) with all threaded hardware. **Important:** Liquid thread lock (prior to curing) helps to eliminate the common problem of "thread seizure" in stainless steel hardware by serving as a lubricant during assembly.

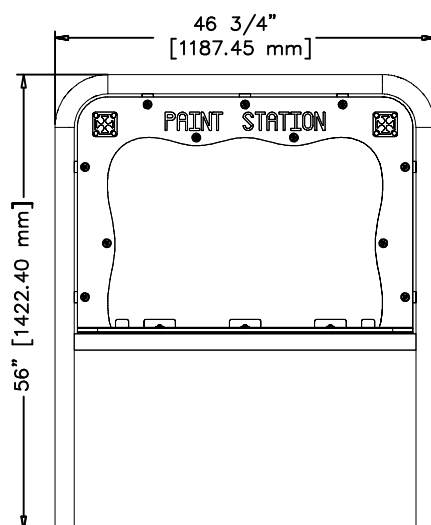
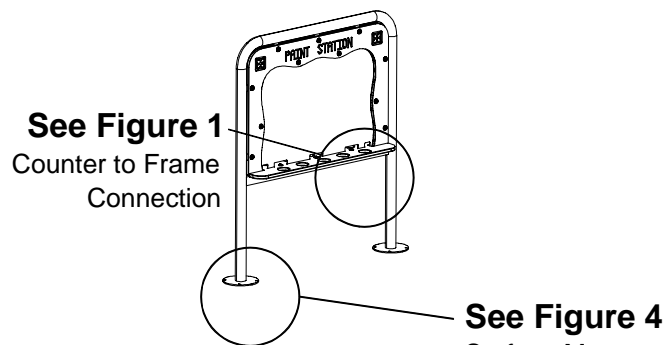
(B) Do not pour concrete until the Equipment is completely assembled, leveled and plumbed. Concrete must be allowed to cure completely before using the equipment (at least 72 hours).

(C) The hardware shown in Figure 4 is the recommendation from the manufacturer and not included with the Equipment. The recommended hex bolt is to be a minimum Grade 5 bolt. The Figure provided is to show the recommended installation of a surface mounted event.

(D) Use appropriate compliant protective surfacing and adjust footing depths accordingly. See free publication - The Handbook for Public Playground Safety, Publication #325 at [www.CPSC.gov](http://www.CPSC.gov) for the surfacing appropriate for the fall height of the equipment or consult your surfacing supply representative.

## Assembly Views

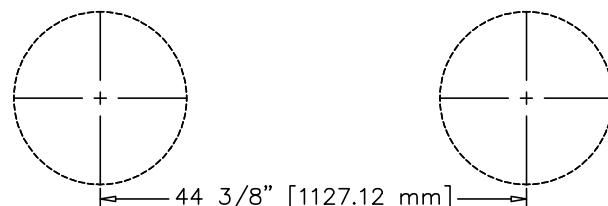
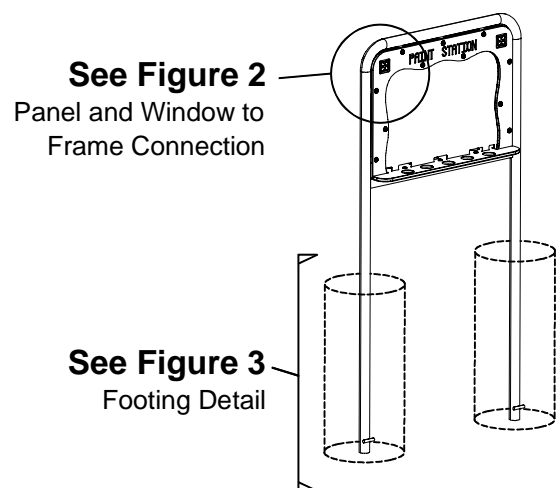
**PC1580-SM**  
(Surface Mount Installation)



**Elevation**

Side View

**PC1580**  
(In-Ground Installation)



**Footing Layout**

Top View



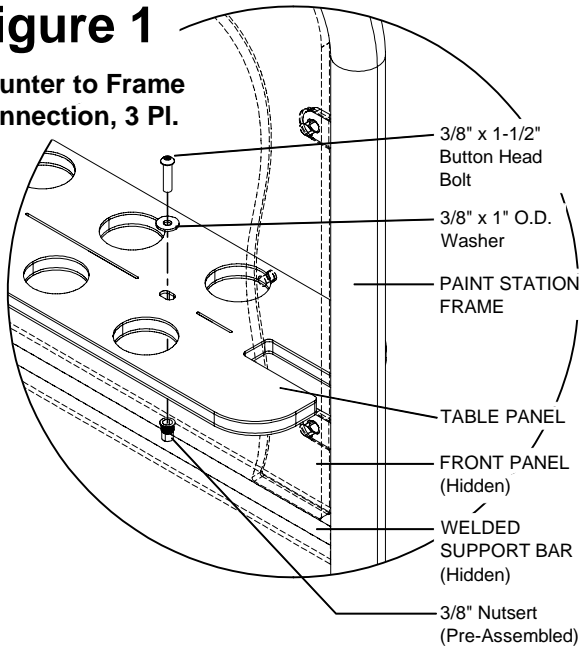
Manufactured by Krauss Craft, Inc.  
[www.playcraftsystems.com](http://www.playcraftsystems.com)

For Customer Service Call  
800.333.8519 (U.S.A.) or  
541.955.9199 (International)

**Rev E**

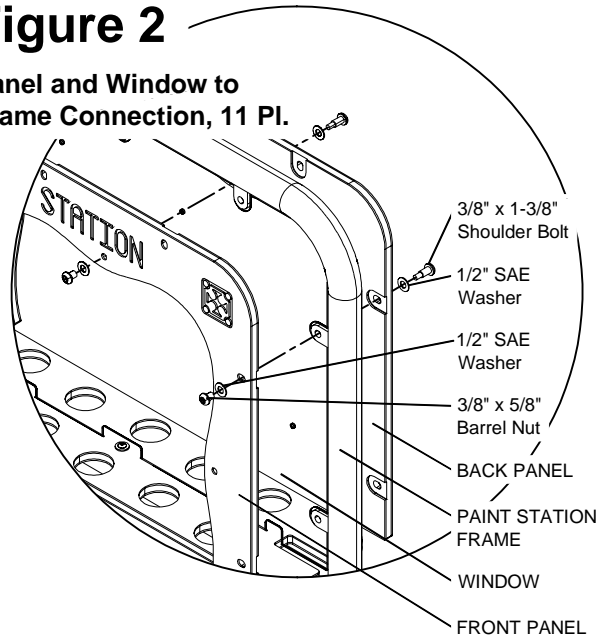
### Figure 1

Counter to Frame Connection, 3 Pl.



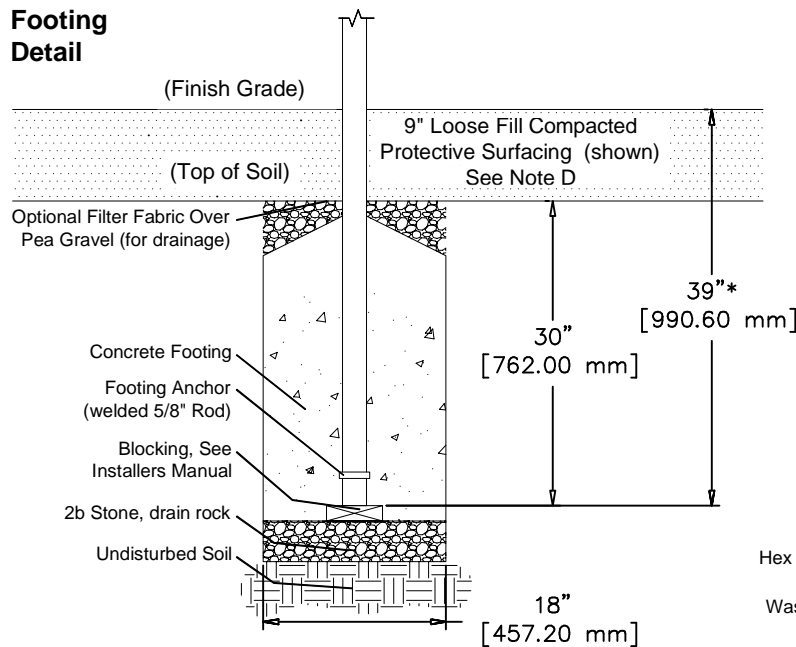
### Figure 2

Panel and Window to Frame Connection, 11 Pl.



### Figure 3

Footing Detail

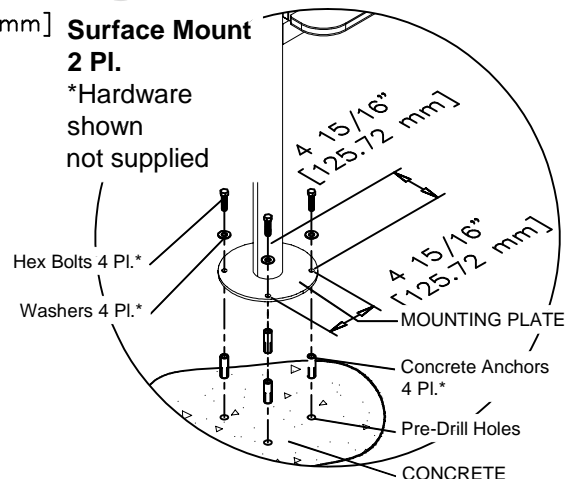


\*Adjust Footing Depth compensating for protective surfacing depth.

### Figure 4

Surface Mount  
2 Pl.

\*Hardware shown not supplied



## Parts List -

<u>PART #</u>	<u>DESCRIPTION</u>	<u>QTY.</u>
FS-PC1580	Paint Station Frame	1
004465	Paint Station Panel Set	1
004468	Paint Station Window	1
9103072-TR	Bolt Button Head 3/8" x 1-1/2"	3
9143062-TR	Bolt Shoulder 3/8" x 1-3/8"	11
9333002	Washer Flat 3/8" x 1" x .100 thick	3
9345002	Washer Flat SAE 1/2"	22
9443022-TR	Nut Barrel 3/8" x 5/8" BH	11

## Assembled Parts List

<u>PART #</u>	<u>DESCRIPTION</u>	<u>QTY.</u>
9473001-1	Nutsert 3/8" Avdel ZN 5/16" Long	3

### IMPORTANT:

The hardware shown in Figure 4 for surface mount installation is not supplied.

## Specifications

### PAINT STATION FRAME:

Shall be made of 2.375" O.D., 11 Ga. steel tubing with a welded support bar made of 1" x 2" x .120" rect. steel tube and (7) welded 3/8" tabs for mounting. The Paint Station Frame has a multi-stage baked-on powder coat finish.

### PAINT STATION PANEL SET:

Shall be fabricated using 3/4" High Density Polyethylene hot-extruded plastic.

### PAINT STATION WINDOW:

Shall be fabricated using .118" thick Polycarbonate.

### HARDWARE:

Shall be stainless steel, zinc/nickel plated or galvanized as required to resist rust and corrosion.

## Installation

### Step 1.

Center Front Panel and Table Panel on Paint Station Frame. Loosely Attach Table Panel (face-up) to Paint Station Frame. Refer to Figure 1 for hardware type and orientation. Apply liquid thread lock and fully tighten all fasteners according to the "TIGHTENING TORQUE FOR HARDWARE" Section of the Installer's Manual. See Note A.

### Step 2.

Insert Window tabs into Table Panel slots. Loosely attach Front and Back Panels keeping Window (clear polycarbonate) in between Front and Back Panels. Refer to Figure 2 for hardware type and orientation.

### Step 3.

Apply liquid thread lock and fully tighten all fasteners according to the "TIGHTENING TORQUE FOR HARDWARE" Section of the Installer's Manual. See Note A.

### Step 4a.

Refer to Footing Layout and mark footing hole locations. Dig (2) 18"Ø footing holes. Refer to Figure 3 for depth and details. IMPORTANT: For areas with soft soil conditions, larger footings may be required. Set the assembled Paint Station into footing holes. Plumb and level entire component. Block and brace prior to pouring concrete into holes. Refer to Figure 3 for details. Pour concrete into footing holes. Allow 72 hours to cure before using this equipment. See Note B.

### SURFACE MOUNT

#### Step 4b. \*Use this step for surface mount only\*

Drill holes in concrete at the dimensions shown in Figure 4. Attach Paint Station (Surface Mount) to the concrete using the hardware shown. Refer to Figure 4 for hardware type and orientation (hardware not supplied). See Note C.

### Step 5.

Place appropriate compliant protective surfacing under and around Paint Station. See Note D.

## Maintenance

Periodically tighten all screws, bolts and nuts. A periodic inspection of all parts is necessary. If a part is broken or worn, replace immediately. For general maintenance please refer to our Playground Maintenance Manual.



Manufactured by Krauss Craft, Inc.  
www.playcraftsystems.com

For Customer Service Call  
800.333.8519 (U.S.A.) or  
541.955.9199 (International)

Rev E