

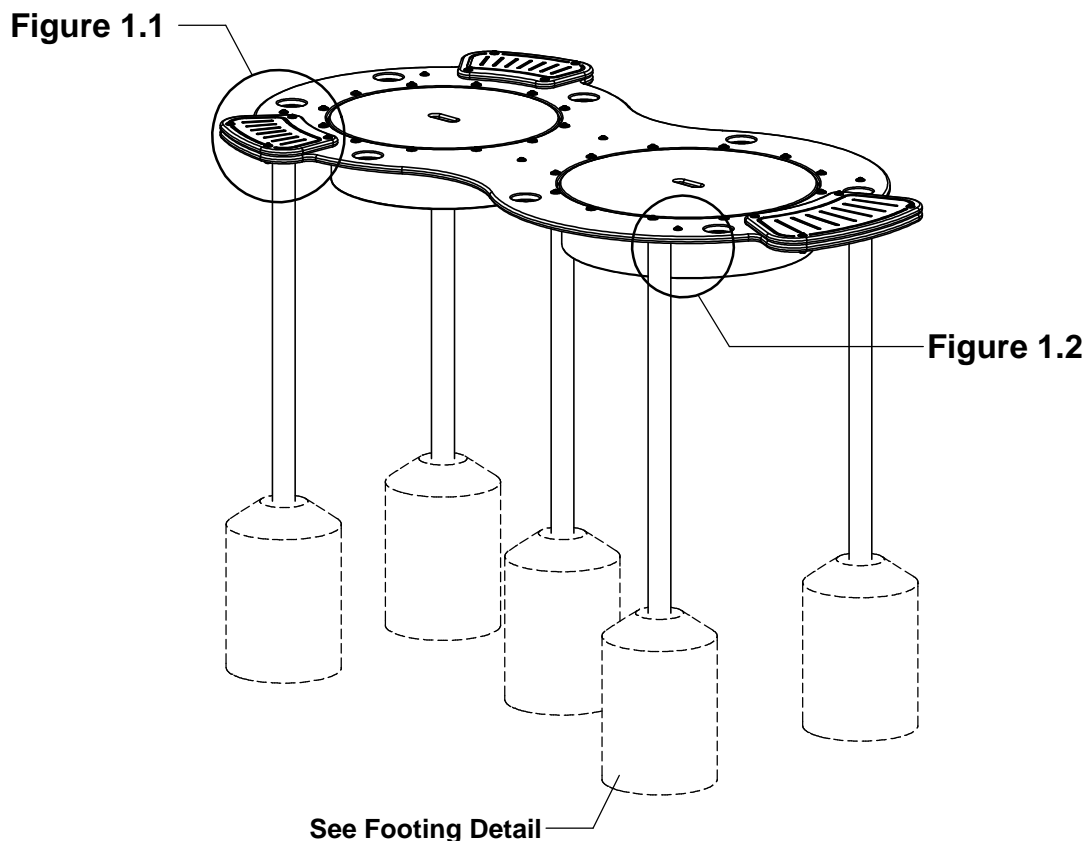
IMPORTANT NOTES: Read First

(A) Use liquid thread lock (such as Loctite®) with all threaded hardware. **Important:** Liquid thread lock (prior to curing) helps to eliminate the common problem of "thread seizure" in stainless steel hardware by serving as a lubricant during assembly.

(B) Do not pour concrete until the equipment is completely assembled, leveled and plumbed. Concrete must be allowed to cure completely before using the equipment (at least 72 hours).

(C) An appropriate energy absorbing safety surface is required under and around all playground equipment. Loose fill protective surfacing is shown only as an example for the purpose of this assembly instruction. Other surfacing material may vary in thickness and/or compression depths. See free publication - The Handbook for Public Playground Safety, Publication #325 at www.cpsc.gov for the surfacing appropriate for the fall height of the equipment or consult your surfacing supply representative.

FIGURE 1
Dual Sand & Water Table



Step 1

Refer to Footing Layout and mark footing hole locations. Dig (5) Ø 12" footing holes. Refer to Footing Detail for depth and details.

IMPORTANT: For areas with soft soil conditions, larger footings may be required.

* Footing depth must be adjusted to compensate for the depth/thickness requirements of selected safety surfacing. See Section 06.1 of the Installation Manual.

Footing Detail

LOOSE FILL SURFACING MATERIAL SHOWN:
9" compressed or 12" uncompressed depth.
Compressed depth shown. (See Note C)

(Finish Grade)

(Top of Soil)

Optional Filter Fabric over
Pea Gravel (for drainage)

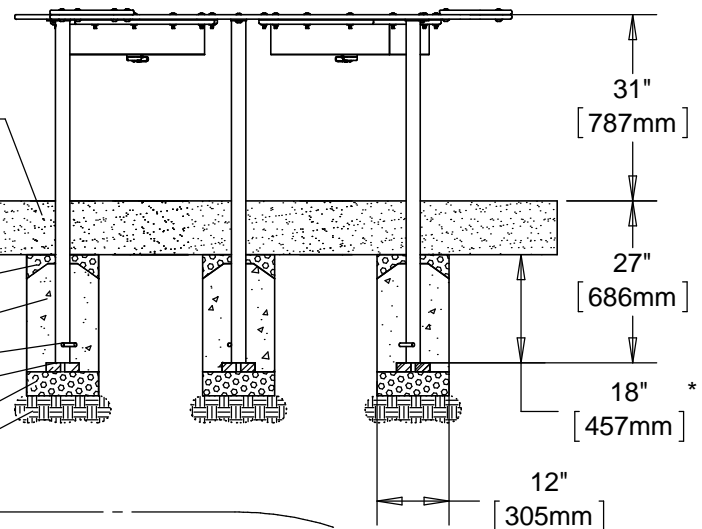
Concrete Footing

Footing Anchor

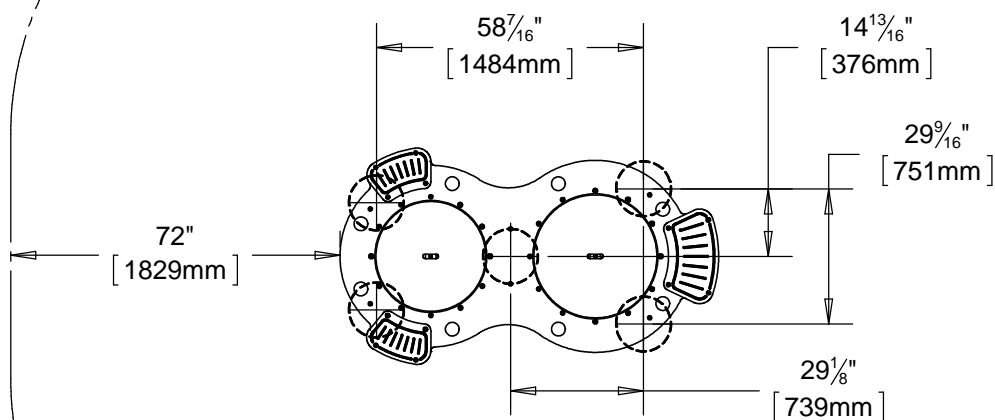
Blocking, see
Installers Manual

2b Stone, drain rock

Undisturbed Soil



Top View - Footing Layout 72" [1829mm] Use Zone Recommended



Refer to current ASTM 1487 standards:

The Use Zone for Stationary Play equipment shall extend no more than 72" [1829mm] in all directions from the perimeter of the play structure. The Use Zones of Stationary Play equipment may overlap if the adjacent designated play surfaces of each structure are no more than 30" [760mm] above the protective surface. Optional Station Sign is to be located outside the Use Zone per manufacturer's recommendation.

Step 2 (Factory Assembled)

Attach Drain Plug Tops, O-Rings and Retainers to Stainless Steel Basin as shown in Figure 2.

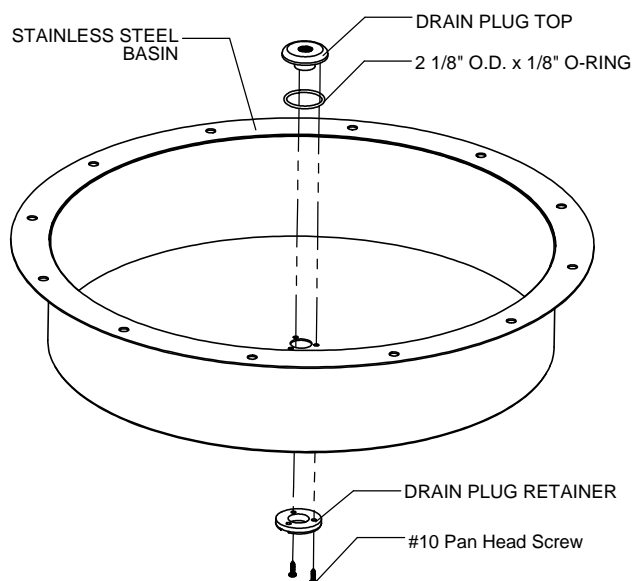


FIGURE 2

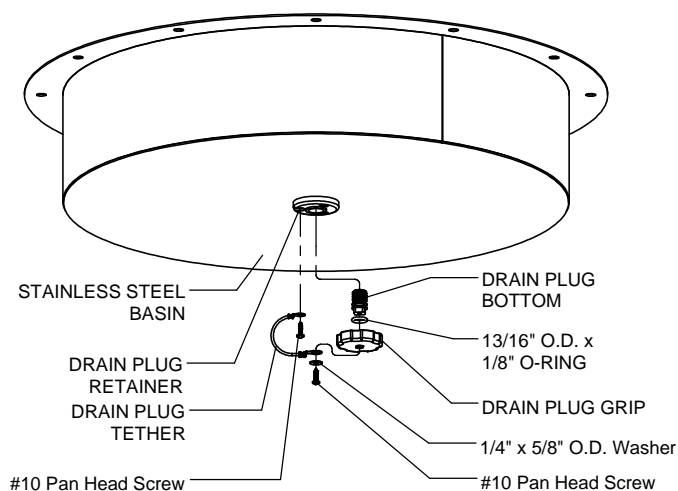


FIGURE 3

Step 3 (Factory Assembled)

Attach Plug Tethers to Drain Plug Retainers and Grips as shown in Figure 3.

NOTE: Hand tighten Plug Grips until they are in the closed position.

Step 4 (Factory Assembled)

Attach Accent Panels to Table as shown in Figure 1.1.
(See Note A)

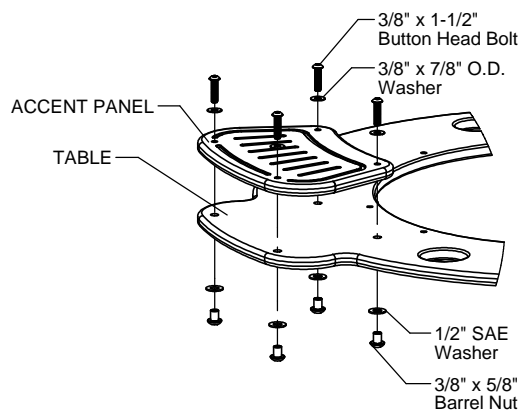


Figure 1.1

Step 5

Attach Stainless Steel Basins to Table as shown in Figure 4. (See Note A)

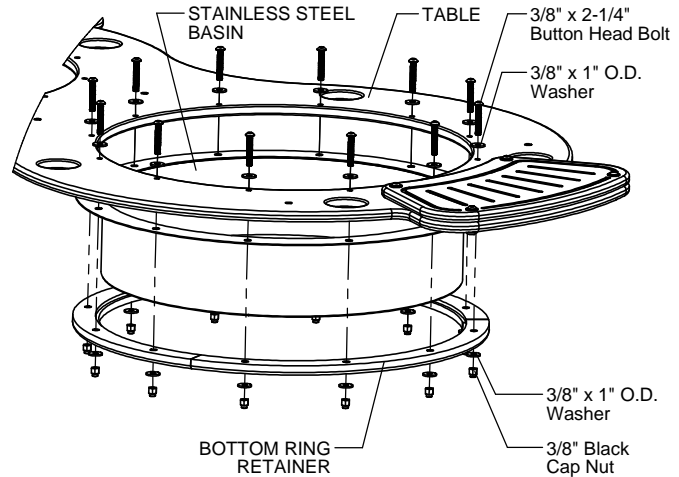


FIGURE 4

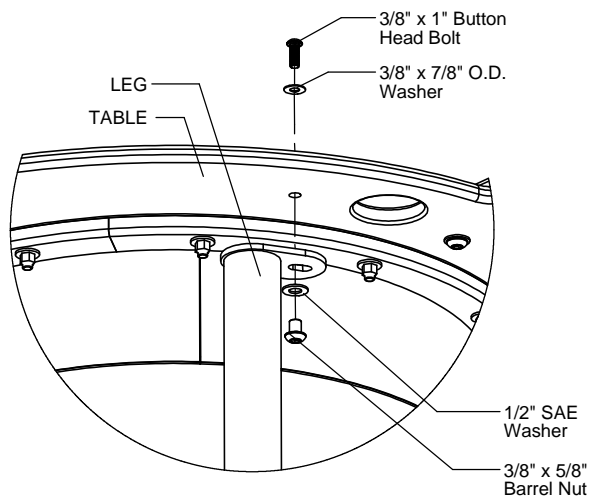


Figure 1.2

Step 6

Place Legs into footing holes and attach to Table as shown in Figure 1.2. (See Note A)

Step 7

Fully tighten all fasteners according to the "TIGHTENING TORQUE FOR HARDWARE" section of the Installation Manual.

Step 8

Plumb and level entire component. Pour concrete into footing holes. Allow at least 72 hours to cure before using this equipment. (See Note B)

Step 9

Place required protective surfacing under and around Dual Sand & Water Table. (See Note C)

Parts List

Part #	DESCRIPTION	QTY.
EE-0147-LRG	Large SS Tub Bottom Ring Retainer	3
EE-0147-SM	Small SS Tub Bottom Ring Retainer	3
EE-4594-LBC	Dual Sand & Water Table Large Basin Cover	1
EE-4594-SBC	Daul Sand & Water Table Small Basin Cover	1
FS-PC1511-C	Sand Table Leg Center 31"	1
FS-PC1511-L	Sand Table Leg 31"	4
9103102-TR	Bolt Button Head 3/8" x 2-1/4"	24
9103052-TR	Bolt Button Head 3/8" x 1"	6
9333002	Washer Flat 3/8" x 1" O.D. x .100" thick	48
9333042	Washer Flat 3/8" x 7/8" O.D.	6
9345002	Washer Flat SAE 1/2"	6
9413162-BLK	Nut Lock 3/8" w/ Black Cap	24
9443022-TR	Nut Barrel 3/8" x 5/8" BH	6

Assembled Parts List

Part #	DESCRIPTION	QTY.
CE-0294-LRG	Large SS Basin	1
CE-0294-SM	Small SS Basin	1
EE-0385	Drain Plug Grip	2
EE-0386	Drain Plug Retainer	2
EE-4594-LAP	Sand & Water Table Large Accent Panel	1
EE-4594-SAP	Sand & Water Table Small Accent Panel	2
EE-4594-T	Dual Sand & Water Table	1
HE-0062	Drain Plug Tether	2
IE-0061	Drain Plug Bottom	2
IE-0062	Drain Plug Top	2
482207	13/16" O.D. x 1/8" O-Ring	2
482225	2 1/8" O.D. x 1/8" O-Ring	2
9103072-TR	Bolt Button Head 3/8" x 1-1/2"	12
9251032	Screw SQ #10x3/4 DR PH SMS SS	8
9331002	1/4" x 5/8" x .051 Washer	2
9333042	Washer Flat 3/8" x 7/8" O.D.	12
9345002	Washer Flat SAE 1/2"	12
9443022-TR	Nut Barrel 3/8" x 5/8" BH	12

Specifications

STAINLESS STEEL BASINS:

Shall be fabricated from 14 guage stainless steel sheet metal walls with welded 14 gauge stainless steel sheet metal rim and bottom.

SAND TABLE LEGS:

Shall be fabricated using 1.660" O.D. 11 gauge steel tubing with welded 1/4" thick steel brackets. The Sand Table Legs shall have a multi-stage baked-on powder coat finish.

SAND & WATER TABLE, ACCENT PANELS, BASIN COVERS, DRAIN PLUG RETAINER & DRAIN PLUG GRIP:

Shall be made from high density 3/4" sheet plastic specially formulated for optimum UV stability and color retention.

DRAIN PLUG TOP & DRAIN PLUG BOTTOM:

Shall be machined from nylon 6/10.

DRAIN PLUG TETHER:

Shall be made from clear vinyl coated Ø1/4" steel cable, with crimped aluminum ring terminals.

HARDWARE:

Shall be stainless steel, zinc/nickel plated or galvanized as required to resist rust and corrosion.

Maintenance

Periodically tighten all screws, bolts and nuts. A periodic inspection of all parts is necessary. If a part is broken or worn, replace immediately. For general maintenance please refer to our Playground Maintenance Manual.



Manufactured by Krauss Craft, Inc.
www.playcraftsystems.com

For Customer Service Call
800.333.8519 (U.S.A.) or
541.955.9199 (International)

Rev B
12/7/2015