

IMPORTANT NOTES: Read First

(A) Use liquid thread lock (such as Loctite®) with all threaded hardware. **Important:** Liquid thread lock (prior to curing) helps to eliminate the common problem of "thread seizure" in stainless steel hardware by serving as a lubricant during assembly.

(B) Do not pour concrete until the equipment is completely assembled, leveled and plumbed. Concrete must be allowed to cure completely before using the equipment (at least 72 hours).

(C) Refer to Installation Manual for 09 Collars and 11 Socket Clamps installation instructions.

(D) For all steps greater than 20" above the finish grade, the distance between the stepping surface and the top of the handhold directly above must be between 22" and 38".

(E) An appropriate energy absorbing safety surface is required under and around all playground equipment. Loose fill protective surfacing is shown only as an example for the purpose of this assembly instruction. Other surfacing material may vary in thickness and/or compression depths. See free publication - The Handbook for Public Playground Safety, Publication #325 at www.cpsc.gov for the surfacing appropriate for the fall height of the equipment or consult your surfacing supply representative.

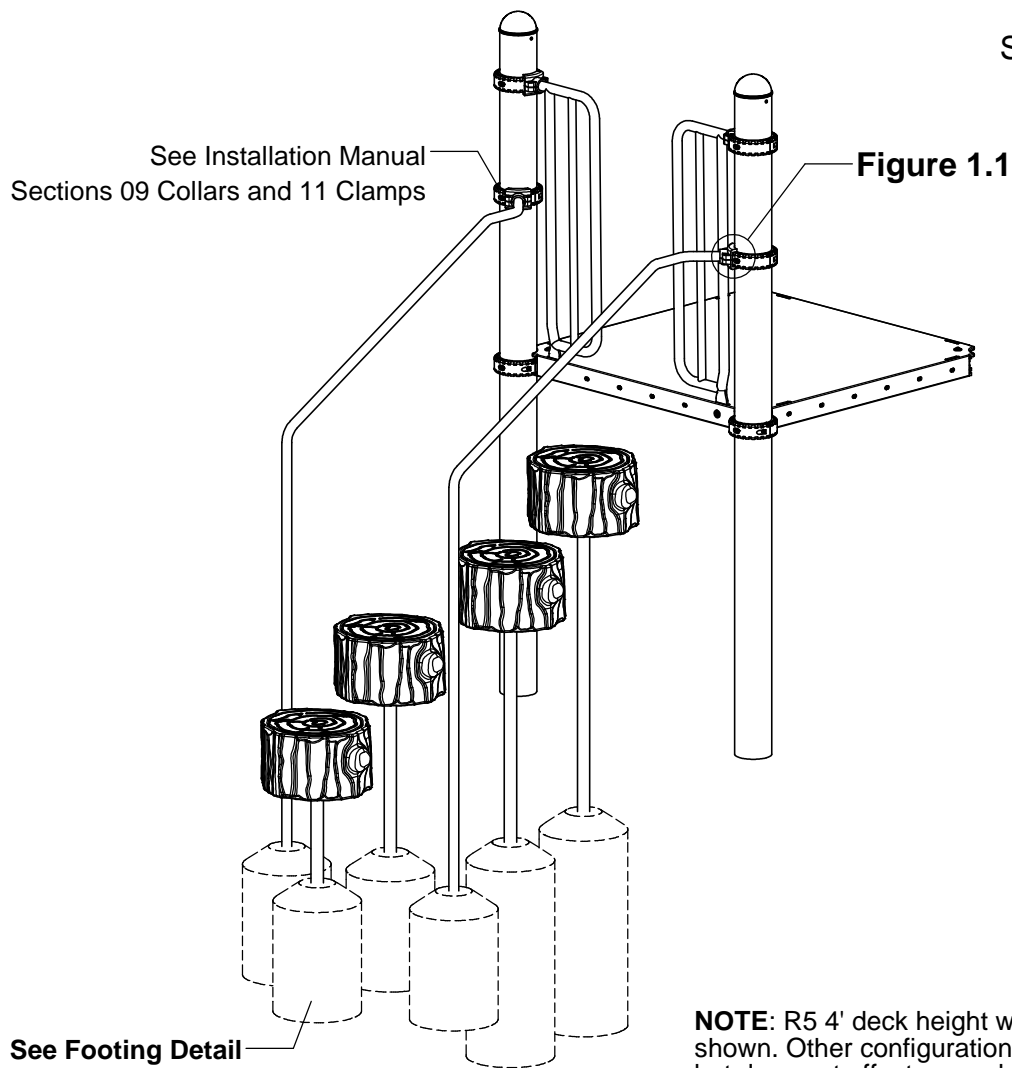


FIGURE 1
Stump Step-Up

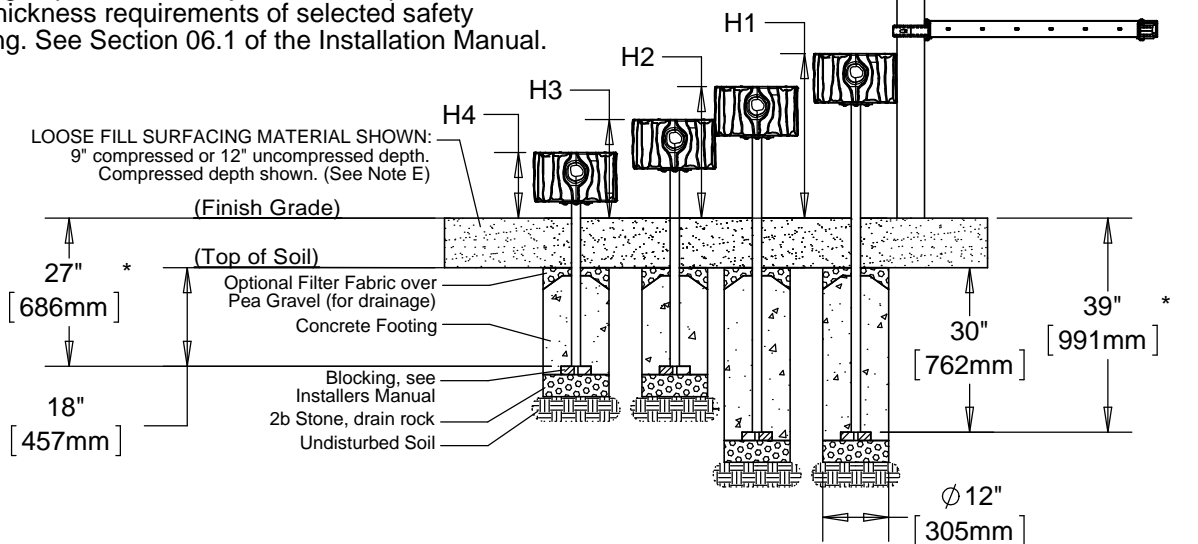
NOTE: R5 4' deck height with handholds option shown. Other configurations will vary slightly, but does not affect assembly.

Step 1

Refer to Footing Layout and mark footing hole locations. Dig (4) Ø 12" footing holes. Refer to Footing Detail for depth and details.

IMPORTANT: For areas with soft soil conditions, larger footings may be required.

* Footing depth must be adjusted to compensate for the depth/thickness requirements of selected safety surfacing. See Section 06.1 of the Installation Manual.

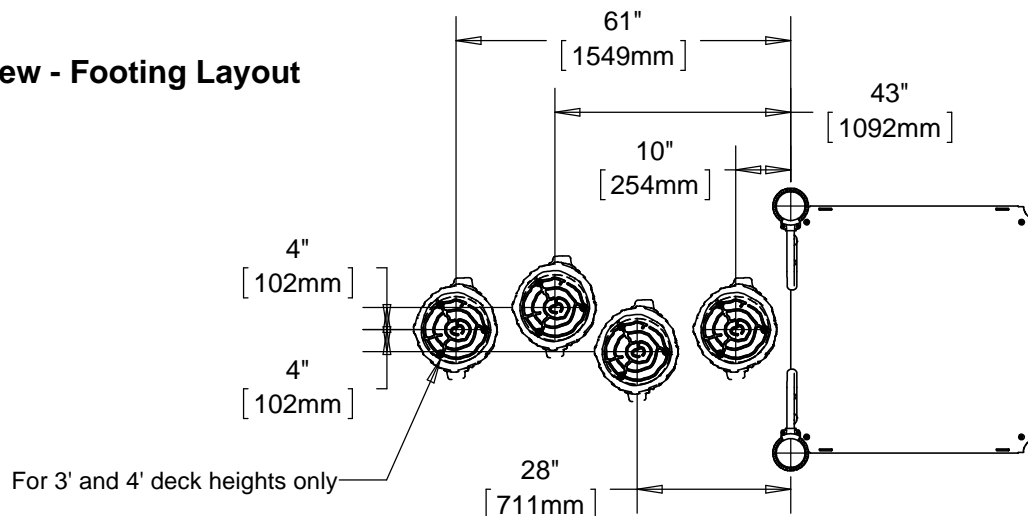


Step Height Table

Finish Grade to Top of Stepping Surface

Assembly	H1	H2	H3	H4
1961-S3-24	-	24" [610 mm]	18" [457 mm]	12" [305 mm]
1961-S4-36	30" [762 mm]	24" [610 mm]	18" [457 mm]	12" [305 mm]
1961-S4-48	39" [991 mm]	30" [762 mm]	21" [533 mm]	12" [305 mm]

Top View - Footing Layout



Step 2

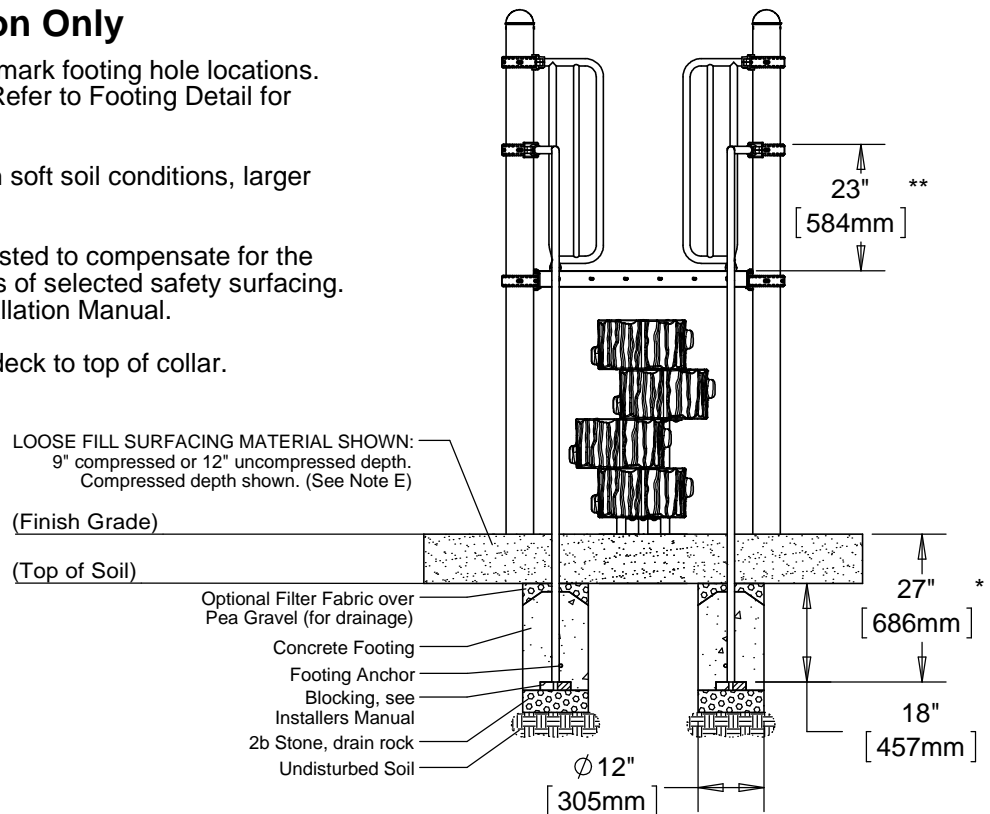
For Handhold Option Only

Refer to Footing Layout and mark footing hole locations. Dig (2) Ø 12" footing holes. Refer to Footing Detail for depth and details.

IMPORTANT: For areas with soft soil conditions, larger footings may be required.

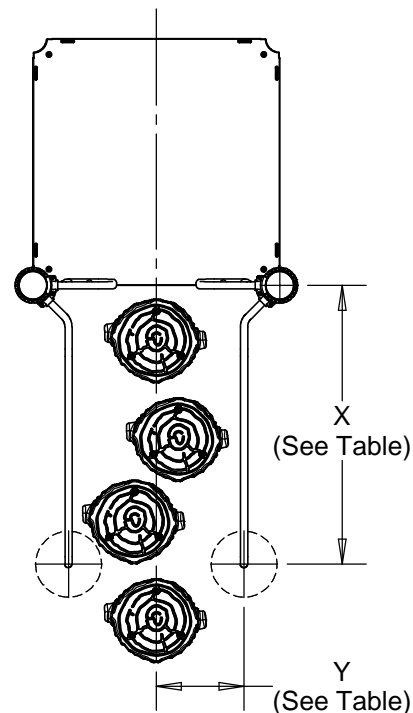
* Footing depth must be adjusted to compensate for the depth/thickness requirements of selected safety surfacing. See Section 06.1 of the Installation Manual.

** Height shown from top of deck to top of collar.



Top View - Footing Layout

Footing Distance Table Center of Post to Center of Footing				
Assembly	X (in.)	X (mm)	Y (in.)	Y (mm)
R3.5	65-3/4"	1670	15"	388
R5	50-13/16"	1291	16"	406



Step 2 (Factory Assembled)

Match appropriate Tread letter to corresponding Stump side and attach Top Treads to Stump Steps as shown in Figure 2. (See Note A)

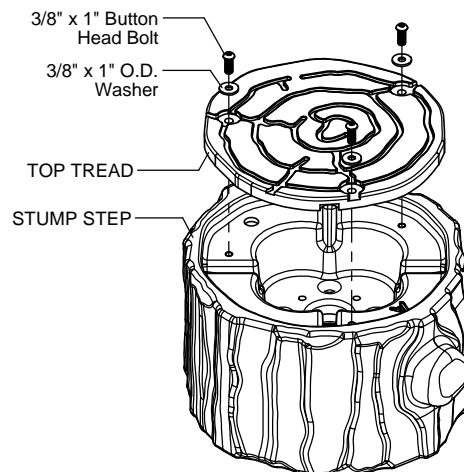


FIGURE 2

Step 3 (Factory Assembled)

Match appropriate Tread letter to corresponding Stump side and loosely attach Bottom Treads to Stump Steps as shown in Figure 3.

NOTE: Do not use liquid thread lock (such as Locktite®) on the 3/8" x 1" Button Head Bolts in this step.

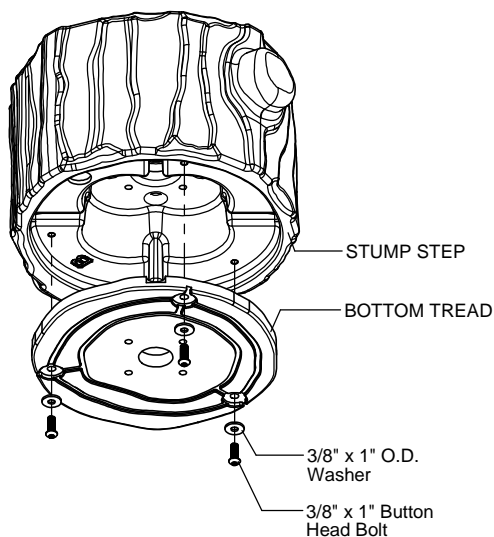


FIGURE 3

Step 4

Remove Bottom Treads from Stump Steps and attach Stump Step Legs to Bottom Treads as shown in Figure 4. (See Note A)

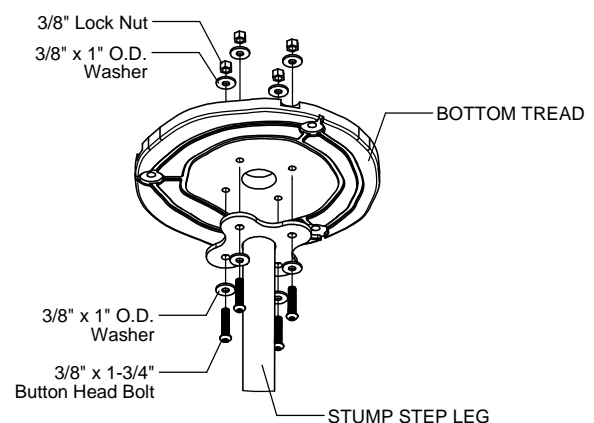


FIGURE 4

Step 5

Attach Bottom Treads to Stump Steps as shown in Figure 5. (See Note A)

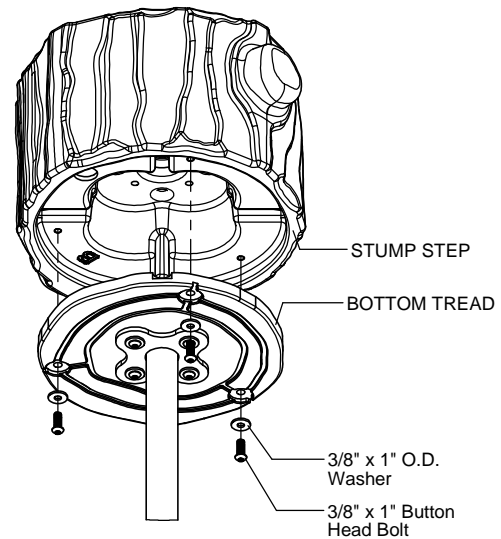


FIGURE 5

Step 6

For Handhold Option Only

Locate and attach collars at heights shown in Footing Detail. (See Note C)

Step 7

For Handhold Option Only

Place Handrails into footing holes and attach to Collars as shown in Figure 1.1. (See Notes A, B, C & D)

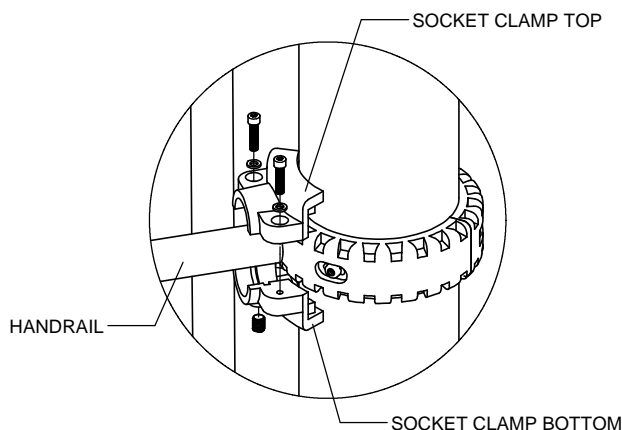


Figure 1.1

Step 8

Fully tighten all fasteners according to the "TIGHTENING TORQUE FOR HARDWARE" section of the Installation Manual.

Step 9

Place Stump Steps into footing holes. Plumb and level entire component. Pour concrete into footing holes. Allow at least 72 hours to cure before using this equipment. (See Note B)

Step 10

Place required protective surfacing under and around Stump Step-Up. (See Note E)

STUMP STEP-UP INSTALLATION INSTRUCTIONS

1961-S4
Page 6 of 6

Parts List

24" DECK HEIGHT		
Part #	DESCRIPTION	QTY.
FS-1961-LEG	Stump Step Leg	1
FS-1961-LEG18	Stump Step Leg 18"	1
FS-1961-LEG24	Stump Step Leg 24"	1
9103082-TR	Bolt Button Head 3/8" x 1-3/4"	12
9333002	Washer Flat 3/8" x 1" O.D. x .100" thick	24
9413002	Nut Lock 3/8"	12

36" DECK HEIGHT		
Part #	DESCRIPTION	QTY
FS-1961-LEG	Stump Step Leg	1
FS-1961-LEG18	Stump Step Leg 18"	1
FS-1961-LEG24	Stump Step Leg 24"	1
FS-1961-LEG30	Step Stump Leg 30"	1
9103082-TR	Bolt Button Head 3/8" x 1-3/4"	16
9333002	Washer Flat 3/8" x 1" O.D. x .100" thick	32
9413002	Nut Lock 3/8"	16

48" DECK HEIGHT		
Part #	DESCRIPTION	QTY.
FS-1961-LEG	Stump Step Leg	1
FS-1961-LEG21	Stump Step Leg 21"	1
FS-1961-LEG30	Step Stump Leg 30"	1
FS-1961-LEG39	Stump Step Leg 39"	1
9103082-TR	Bolt Button Head 3/8" x 1-3/4"	16
9333002	Washer Flat 3/8" x 1" O.D. x .100" thick	32
9413002	Nut Lock 3/8"	16

R3.5 HANDHOLD OPTION		
Part #	DESCRIPTION	QTY.
Varies	Lily Pad Hand Rail	2
HS-1001-R5	Socket Clamp Set R5	2

R5 HANDHOLD OPTION		
Part #	DESCRIPTION	QTY.
VariesA2	Lily Pad Hand Rail	2
HS-1001-R35	Socket Clamp Set R3.5	2

Assembled Parts List

24" DECK HEIGHT		
Part #	DESCRIPTION	QTY.
DE-0041	Stump Step	3
EE-0262-SB	Stump Step Tread Bottom	3
EE-0262-ST	Stump Step Tread Top	3
9103052-TR	Bolt Button Head 3/8" x 1"	18
9333002	Washer Flat 3/8" x 1" O.D. x .100" thick	18

36" - 48" DECK HEIGHT		
Part #	DESCRIPTION	QTY
DE-0041	Stump Step	4
EE-0262-SB	Stump Step Tread Bottom	4
EE-0262-ST	Stump Step Tread Top	4
9103052-TR	Bolt Button Head 3/8" x 1"	24
9333002	Washer Flat 3/8" x 1" O.D. x .100" thick	24

Specifications

STUMP STEP LEG:

Shall be fabricated using 1.660" O.D. 11 gauge steel tubing with welded 1/4" thick steel mounting plate. The Stump Step Leg shall have a multi-stage baked-on powder coat finish.

STUMP STEP:

Shall be constructed of UV-stabilized, rotationally molded, linear, low density polyethylene with an average wall thickness of .250".

STUMP STEP TREAD:

Shall be made from high density 3/4" sheet plastic specially formulated for optimum UV stability and color retention.

LILY PAD STEP-UP HANDRAIL:

Shall be fabricated using 1.315" O.D. 12 gauge steel tubing. The Lily Pad Step-Up Handrail shall have a multi-stage baked-on powder coat finish.

HARDWARE:

Shall be stainless steel, zinc/nickel plated or galvanized as required to resist rust and corrosion.

Maintenance

Periodically tighten all screws, bolts and nuts. A periodic inspection of all parts is necessary. If a part is broken or worn, replace immediately. For general maintenance please refer to our Playground Maintenance Manual.



Manufactured by Krauss Craft, Inc.
www.playcraftsystems.com

For Customer Service Call
800.333.8519 (U.S.A.) or
541.955.9199 (International)

Rev B
4/28/2015