

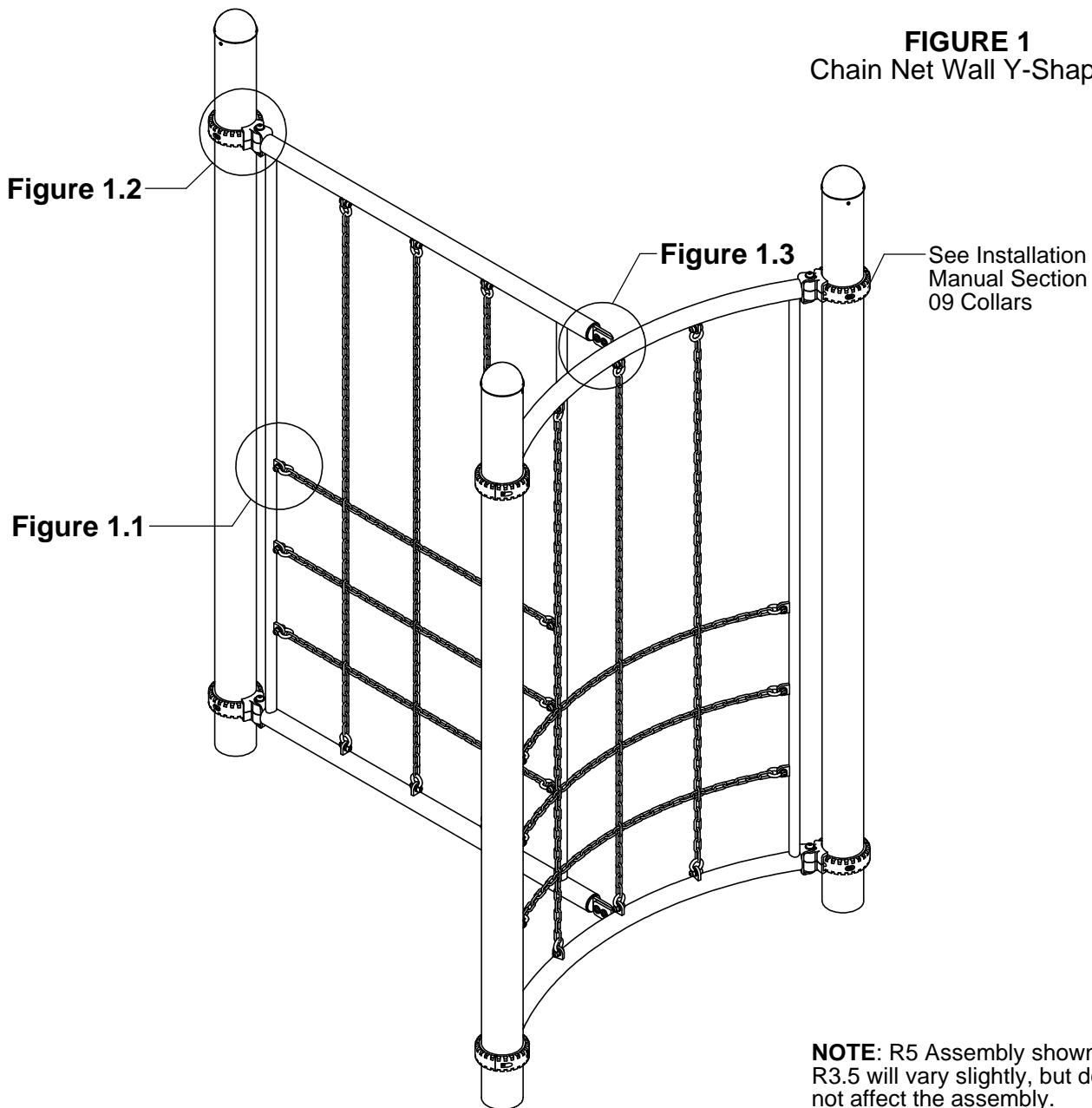
IMPORTANT NOTES: Read First

(A) Use liquid thread lock (such as Loctite®) with all threaded hardware. **Important:** Liquid thread lock (prior to curing helps to eliminate the common problem of "thread seizure" in stainless steel hardware by serving as a lubricant during assembly.

(B) Refer to Installation Manual for 09 Collars assembly instructions.

(C) An appropriate energy absorbing safety surface is required under and around all playground equipment. Loose fill protective surfacing is shown only as an example for the purpose of this assembly instruction. Other surfacing material may vary in thickness and/or compression depths. See free publication - The Handbook for Public Playground Safety, Publication #325 at www.cpsc.gov for the surfacing appropriate for the fall height of the equipment or consult your surfacing supply representative.

FIGURE 1
Chain Net Wall Y-Shaped



Step 1

Locate and attach collars at height given in Collar Layout.
(See Note B)

* Height shown from top of collar to top of collar.

Collar Layout

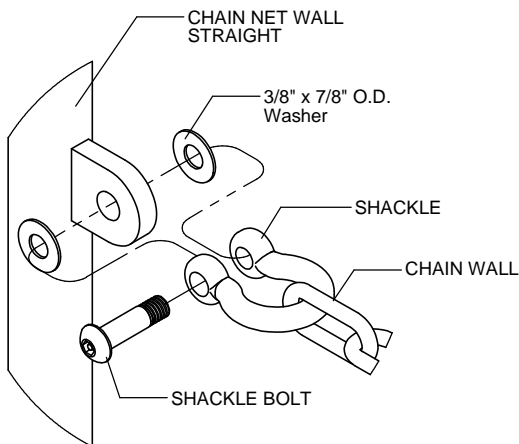
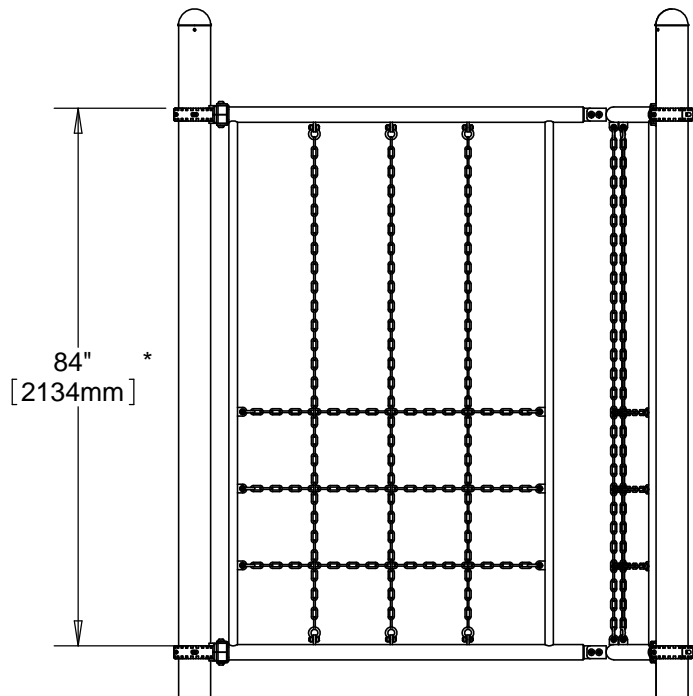


Figure 1.1

Step 2 (Factory Assembled)

Attach Chain Walls to Chain Net Wall Frames as shown in Figure 1.1. (See Note A)

Step 3

Attach Chain Net Wall Frames to collars as shown in Figure 1.2. (See Note A)

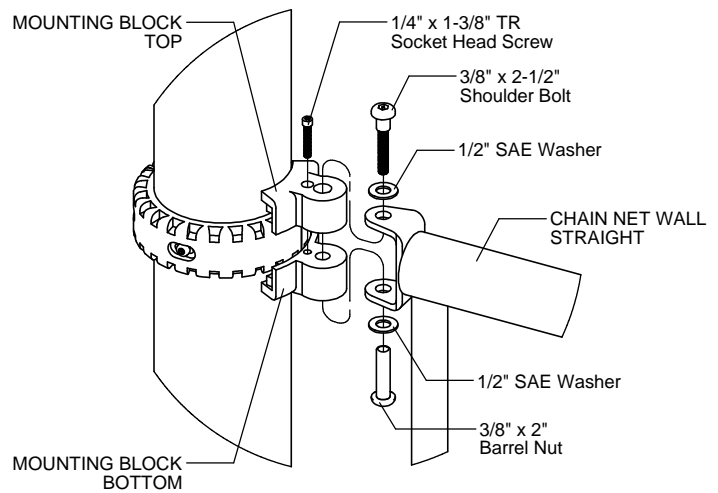


Figure 1.2

Step 4

Attach Chain Net Wall Frames together as shown in Figure 1.3. (See Note A)

Step 5

Fully tighten all fasteners according to the "TIGHTENING TORQUE FOR HARDWARE" section of the Installation Manual.

Step 6

Place required protective surfacing under and around Chain Net Wall Y-Shaped Assembly. (See Note C)

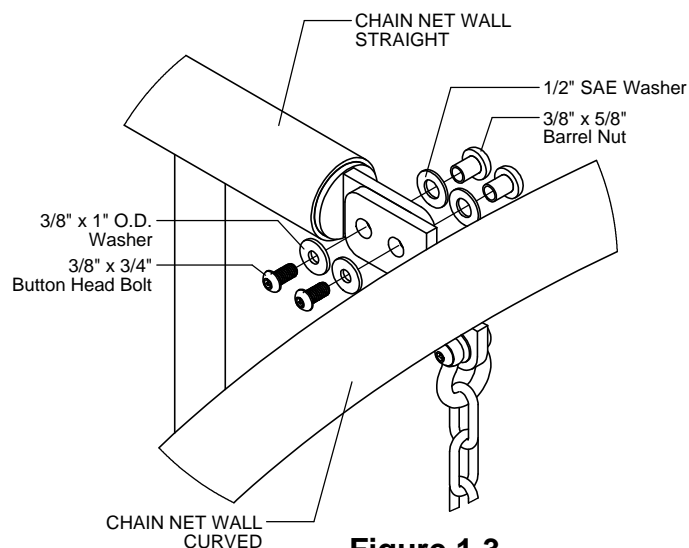


Figure 1.3

Parts List

R3.5 ASSEMBLY		
Part #	DESCRIPTION	QTY
GG-8110	Mounting Block 4 Top R3.5	6
GG-8111	Mounting Block 4 Bottom R3.5	6
9103032-TR	Bolt Button Head 3/8" x 3/4"	4
9143112-TR	Bolt Shoulder 3/8" x 2-1/2" BH	6
9281062-5-TR	Screw Soc HD CS 1/4" x 1-3/8" TR	6
9333002	Washer Flat 3/8" x 1" O.D. x .100" thick	4
9345002	Washer Flat SAE 1/2"	16
9443022-TR	Nut Barrel 3/8" x 5/8" BH	4
9443092-TR	Nut Barrel 3/8" x 2" BH	6

R5 ASSEMBLY		
Part #	DESCRIPTION	QTY
GF-7006-B	Mounting Block R5 Bottom	6
GF-7006-T	Mounting Block R5 Top	6
9103032-TR	Bolt Button Head 3/8" x 3/4"	4
9143112-TR	Bolt Shoulder 3/8" x 2-1/2" BH	6
9281062-5-TR	Screw Soc HD CS 1/4" x 1-3/8" TR	6
9333002	Washer Flat 3/8" x 1" O.D. x .100" thick	4
9345002	Washer Flat SAE 1/2"	16
9443022-TR	Nut Barrel 3/8" x 5/8" BH	4
9443092-TR	Nut Barrel 3/8" x 2" BH	6

Assembled Parts List

Part #	DESCRIPTION	QTY
FS-1954-CRV	Chain Net Wall Curved with Tabs	1
FS-1954-STR	Chain Net Wall Straight with Tabs	1
HE-4287	Chain Wall	2
9333042	Washer Flat 3/8" x 7/8" O.D.	48
451161-SS	Swing Shackle - Stainless Steel	24

Specifications

CHAIN WALL FRAMES:

Shall be fabricated using 2.375" O.D. 10 gauge steel tubing with welded 1.315" O.D. 12 gauge steel vertical rails. Mounting tabs and brackets shall be welded to frame. Chain Wall Frames have a multi-stage baked on powder coat finish.

CHAIN WALL:

Shall be 5/0 galvanized low-carbon steel chain with silver shield finish. The Chain Wall shall be Play-Tuff™ Coated.

MOUNTING BLOCKS:

Shall be two-part and precision die-cast from a high strength aluminum alloy. The Mounting Blocks have a multi-stage baked-on powder coat finish.

HARDWARE:

Shall be stainless steel, zinc/nickel plated or galvanized as required to resist rust and corrosion.

Maintenance

Periodically tighten all screws, bolts and nuts. A periodic inspection of all parts is necessary. If a part is broken or worn, replace immediately. For general maintenance please refer to our Playground Maintenance Manual.



Manufactured by Krauss Craft, Inc.
www.playcraftsystems.com

For Customer Service Call
800.333.8519 (U.S.A.) or
541.955.9199 (International)

Rev C
12/31/2010