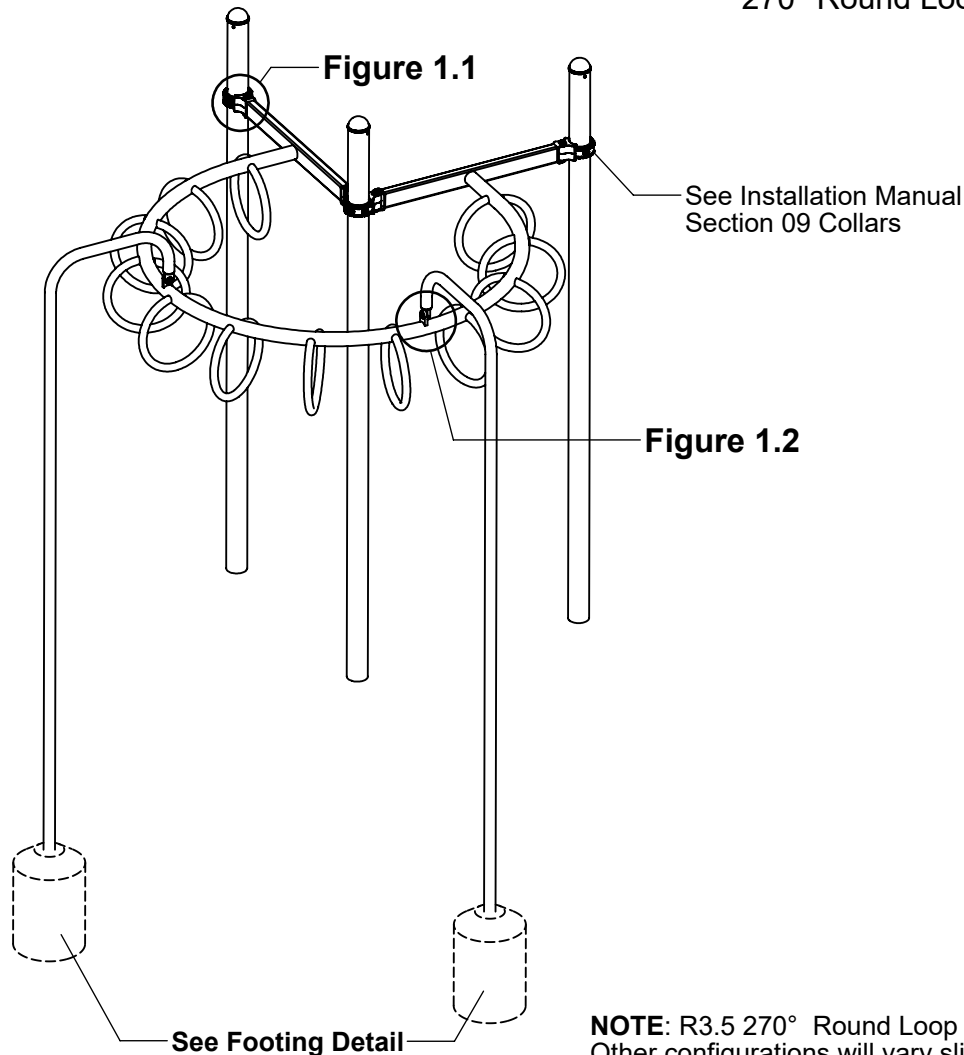


IMPORTANT NOTES: Read First

- (A) Use liquid thread lock (such as Loctite®) with all threaded hardware. **Important:** Liquid thread lock (prior to curing) helps to eliminate the common problem of "thread seizure" in stainless steel hardware by serving as a lubricant during assembly.
- (B) Do not pour concrete until the equipment is completely assembled, leveled and plumbed. Concrete must be allowed to cure completely before using the equipment (at least 72 hours).
- (C) Refer to Installation Manual for 09 Collars installation instructions.
- (D) The maximum height of the rungs (at grasping point) from the top of the ground cover varies by age group: Ages 2-5: 60" [1524 mm] above ground cover. Ages 5-12: 84" [2130 mm] above ground cover.
- (E) Use appropriate compliant protective surfacing and adjust footing depths accordingly. See free publication - The Handbook for Public Playground Safety, Publication #325 at www.CPSC.gov for the surfacing appropriate for the fall height of the equipment or consult your surfacing supply representative.

FIGURE 1
270° Round Loop Traverse



NOTE: R3.5 270° Round Loop Traverse shown. Other configurations will vary slightly, but does not affect assembly.

Step 1

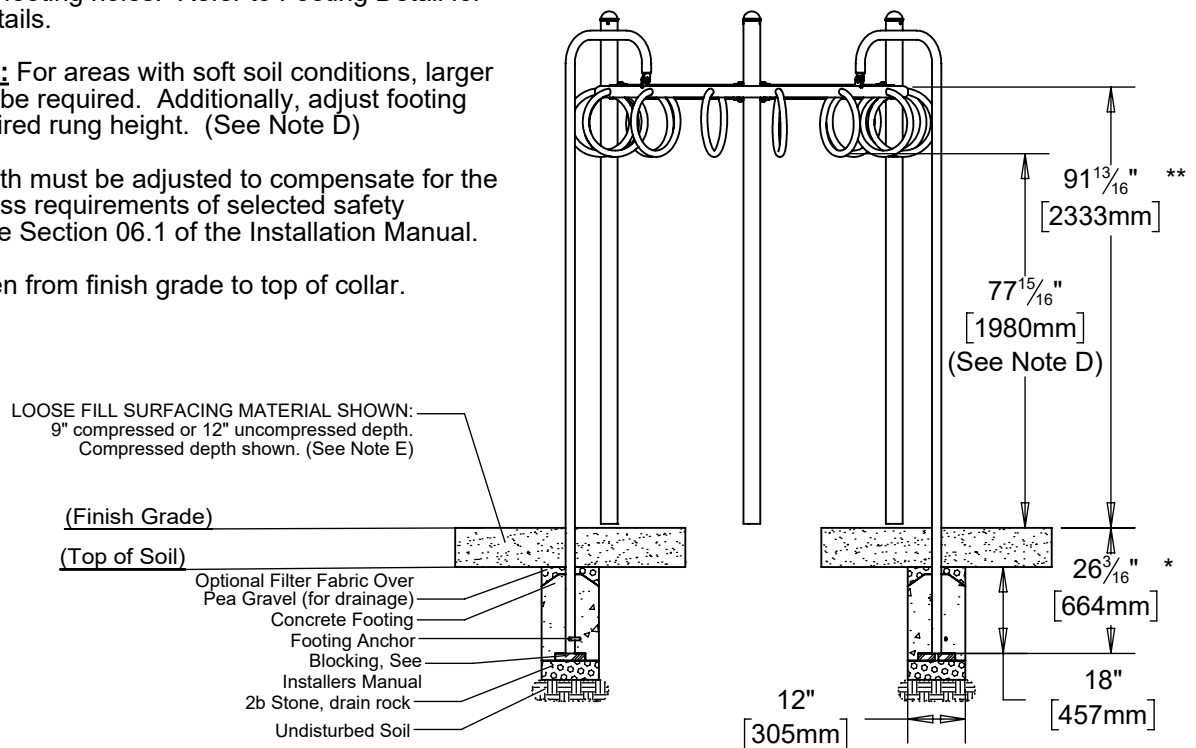
Refer to Footing Layout and mark footing hole locations. Dig (2) Ø 12" footing holes. Refer to Footing Detail for depth and details.

IMPORTANT: For areas with soft soil conditions, larger footings may be required. Additionally, adjust footing depth for desired rung height. (See Note D)

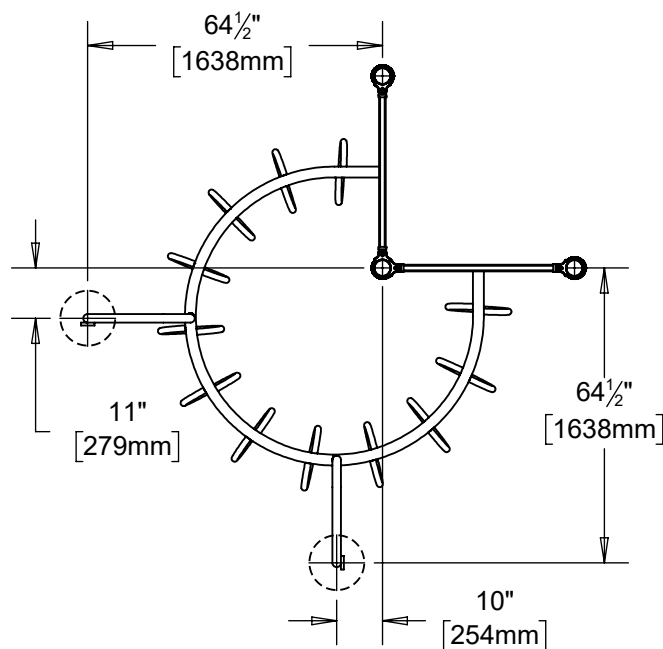
* Footing depth must be adjusted to compensate for the depth/thickness requirements of selected safety surfacing. See Section 06.1 of the Installation Manual.

** Height given from finish grade to top of collar.

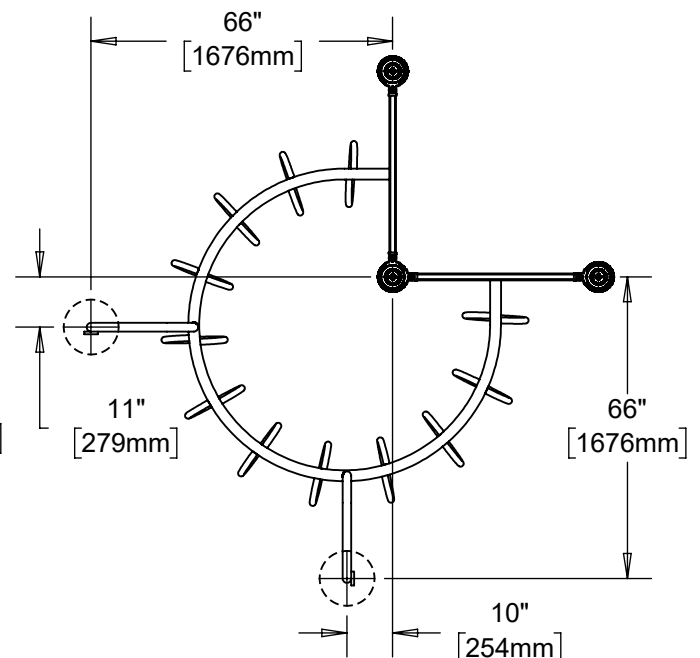
Footing Detail



R3.5 Top View - Footing Layout



R5 Top View - Footing Layout



Step 2

Locate and attach collars at height shown in Footing Detail. Adjust for desired rung height. (See Notes C & D)

Step 3

Attach Traverse Beam to collars as shown in Figure 1.1. (See Note A)

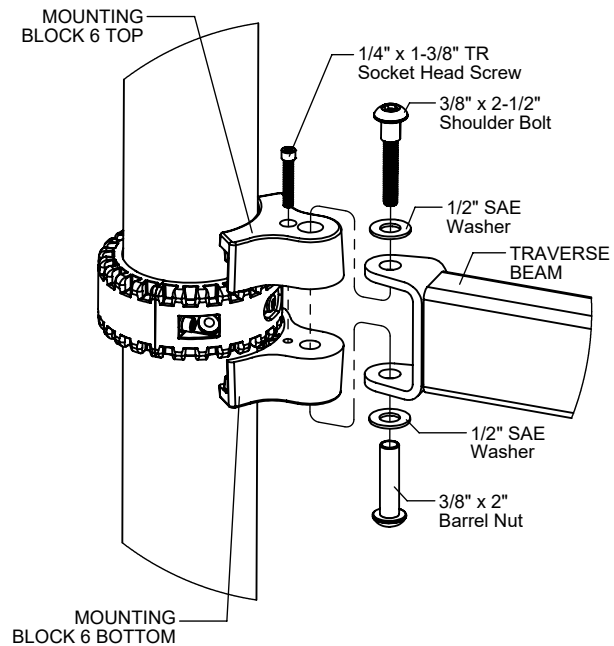


Figure 1.1

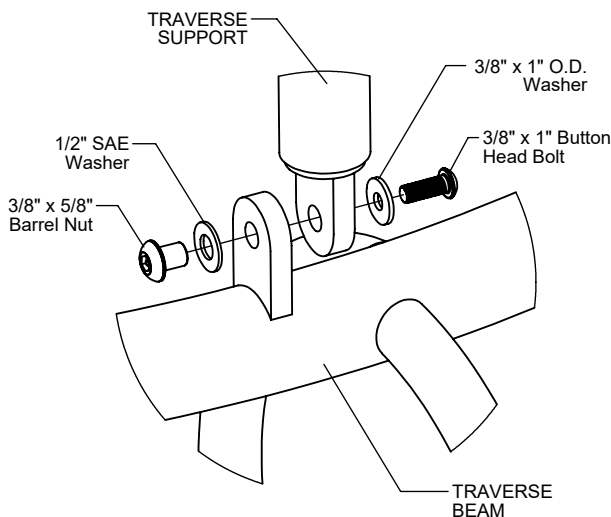


Figure 1.2

Step 4

Place Traverse Supports into footing holes and attach to Traverse Beam as shown in Figure 1.2. (See Notes A & B)

Step 5

Fully tighten all fasteners according to the "TIGHTENING TORQUE FOR HARDWARE" section of the Installation Manual.

Step 6

Plumb and level entire component. Pour concrete into footing holes. Allow at least 72 hours to cure before using this equipment. (See Note B)

Step 7

Place appropriate compliant protective surfacing under and around 270° Round Loop Traverse. (See Note E)

270° ROUND LOOP TRAVERSE INSTALLATION INSTRUCTIONS

1426-270
Page 4 of 4

Parts List R3.5

Part #	DESCRIPTION	QTY.
GG-8125	Mounting Block 6 Top R3.5	4
GG-8127	Mounting Block 6 Bottom R3.5	4
FS-1411-90A	Loop Traverse 90° Support	2
FS-1426-270R35	Round Loop Traverse 270° R3.5	1
9103052-TR	Bolt Button Head 3/8" x 1"	2
9143112-TR	Bolt Shoulder 3/8" x 2-1/2" BH	4
9281062-5-TR	Screw Soc HD CS 1/4" x 1-3/8" TR	4
9333002	Washer Flat 3/8" x 1" O.D. x .100" thick	2
9345002	Washer Flat SAE 1/2"	10
9443022-TR	Nut Barrel 3/8" x 5/8" BH	2
9443092-TR	Nut Barrel 3/8" x 2" BH	4

Parts List R5

Part #	DESCRIPTION	QTY.
GF-7006-B	Mounting Block R5 Bottom	4
GF-7006-T	Mounting Block R5 Top	4
FS-1411-90A	Loop Traverse 90° Support	2
FS-1426-R270	Round Loop Traverse 270° R5	1
9103052-TR	Bolt Button Head 3/8" x 1"	2
9143112-TR	Bolt Shoulder 3/8" x 2-1/2" BH	4
9281062-5-TR	Screw Soc HD CS 1/4" x 1-3/8" TR	4
9333002	Washer Flat 3/8" x 1" O.D. x .100" thick	2
9345002	Washer Flat SAE 1/2"	10
9443022-TR	Nut Barrel 3/8" x 5/8" BH	2
9443092-TR	Nut Barrel 3/8" x 2" BH	4

Specifications

LOOP TRAVERSE 90° SUPPORT:

Shall be fabricated using 1.900" O.D. 11 gauge steel tubing with welded 1/2" thick steel mounting tab. The Loop Traverse 90° Support shall have a multi-stage baked-on powder coat finish.

270° ROUND LOOP TRAVERSE:

Shall be fabricated using 2.375" O.D. 10 gauge steel tubing with welded 1.5" x 3" 11 gauge steel end supports, 1.315" O.D. 11 gauge steel loops, 1/2" thick steel tabs and 1/4" thick steel clevises. The 270° Round Loop Traverse shall have a multi-stage baked-on powder coat finish.

MOUNTING BLOCKS:

Shall be two-part and precision die-cast from a high strength aluminum alloy. The Mounting Blocks have a multi-stage baked-on powder coat finish.

HARDWARE:

Shall be stainless steel, zinc/nickel plated or galvanized as required to resist rust and corrosion.

Maintenance

Periodically tighten all screws, bolts and nuts. A periodic inspection of all parts is necessary. If a part is broken or worn, replace immediately. For general maintenance please refer to our Playground Maintenance Manual.



www.playcraftsystems.com
For Customer Service Call
800.333.8519 (U.S.A.) or 541.955.9199 (International)

Rev C
12/12/2018