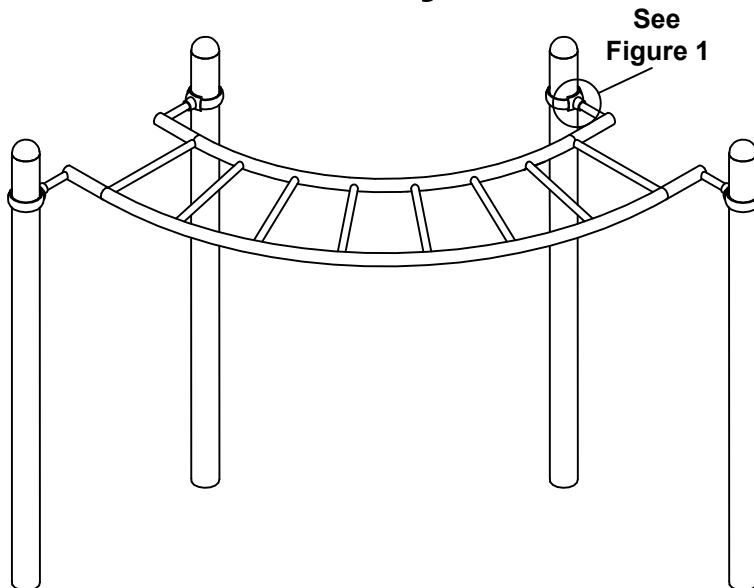


Assembly View



Plan View

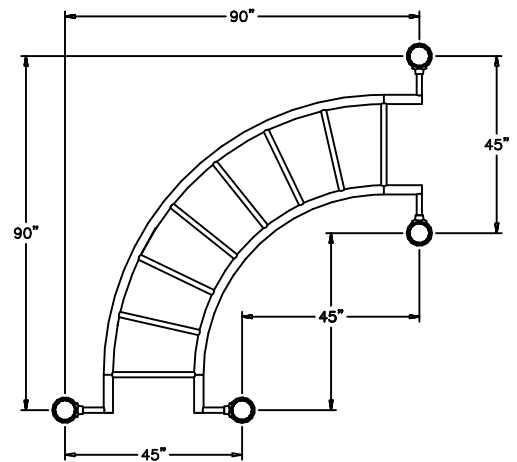
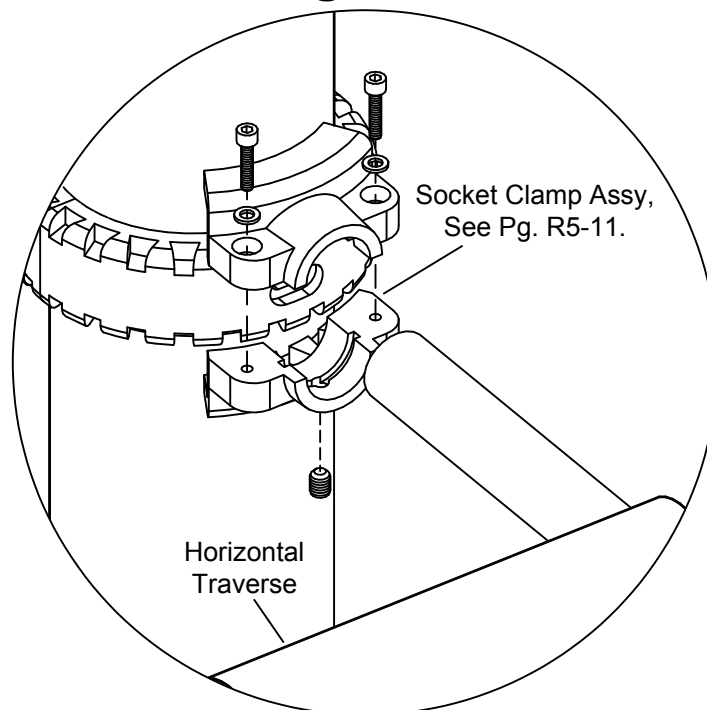


Figure 1



Parts List

QTY.	DESCRIPTION	PART #
1	Horizontal Ladder 90°	FS-1429-R
4	R5 Socket Clamp Assy.	See Page 11

Specifications

HORIZONTAL LADDER:

Support beams shall be constructed of 2.375" OD, 10 gage steel tube with 1.315" OD, 12 gage steel tube rungs uniformly spaced and welded in place. Finished with a baked on powder coating.

SOCKET CLAMPS:

Shall be two-part and precision die-cast from a high strength aluminum alloy. Finished with a baked on powder coating.

HARDWARE:

Shall be zinc/nickel plated, galvanized or stainless steel as required to resist rust and corrosion.

Maintenance

Periodically tighten all screws, bolts and nuts.
A periodic inspection of all parts is necessary.
If a part is broken or worn, replace immediately.

Installation

Notes:

(A) The height of the rungs (at grasping point) from the top of ground cover varies by age group.
Ages 2-5: Max. Height is 60" above ground cover
Ages 5-12: Max. Height is 84" above ground cover.

(B) Use liquid thread lock (such as Loctite) with all threaded hardware that does not include self-locking nuts.

Step 1.

Locate and mark the positions of the collars on the support posts and attach as shown on Assembly Page 09.

Step 2.

Attach the Horizontal Ladder to the collars as shown in Figure 1.

Step 4.

Check to ensure that the Horizontal Ladder has been installed square, level and plumb at the appropriate height (See Note A) and make any adjustments if necessary.

Step 5.

Fully tighten all fasteners.