

IMPORTANT NOTES: Read First

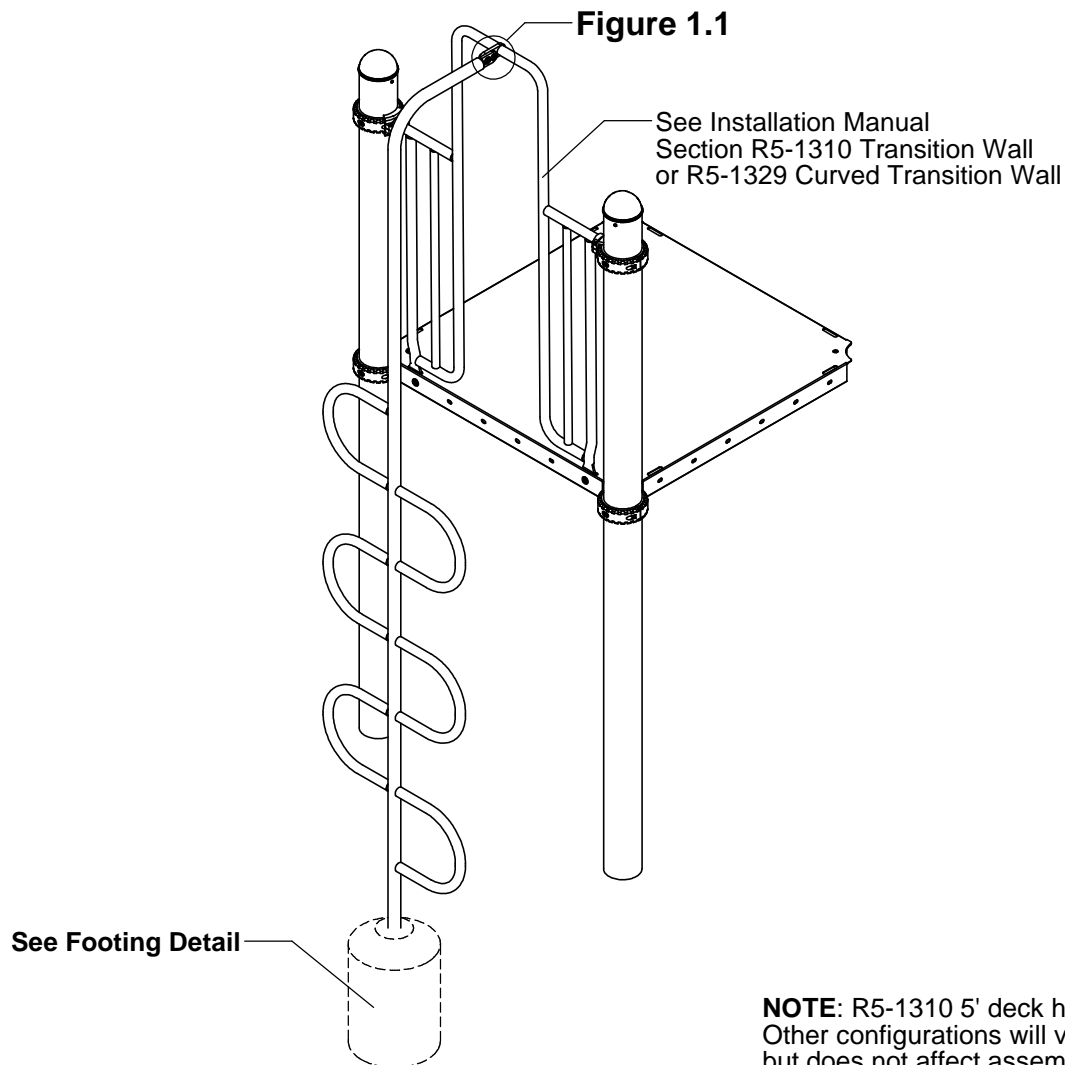
(A) Use liquid thread lock (such as Loctite®) with all threaded hardware. **Important:** Liquid thread lock (prior to curing helps to eliminate the common problem of "thread seizure" in stainless steel hardware by serving as a lubricant during assembly.

(B) Do not pour concrete until the equipment is completely assembled, leveled and plumbed. Concrete must be allowed to cure completely before using the equipment (at least 72 hours).

(C) Refer to Installation Manual for R5-1310 Transition Wall or R5-1329 Curved Transition Wall assembly instructions.

(D) Use appropriate compliant protective surfacing and adjust footing depths accordingly. See free publication - The Handbook for Public Playground Safety, Publication #325 at www.CPSC.gov for the surfacing appropriate for the fall height of the equipment or consult your surfacing supply representative.

FIGURE 1
Snake Climber



NOTE: R5-1310 5' deck height shown. Other configurations will vary slightly, but does not affect assembly.

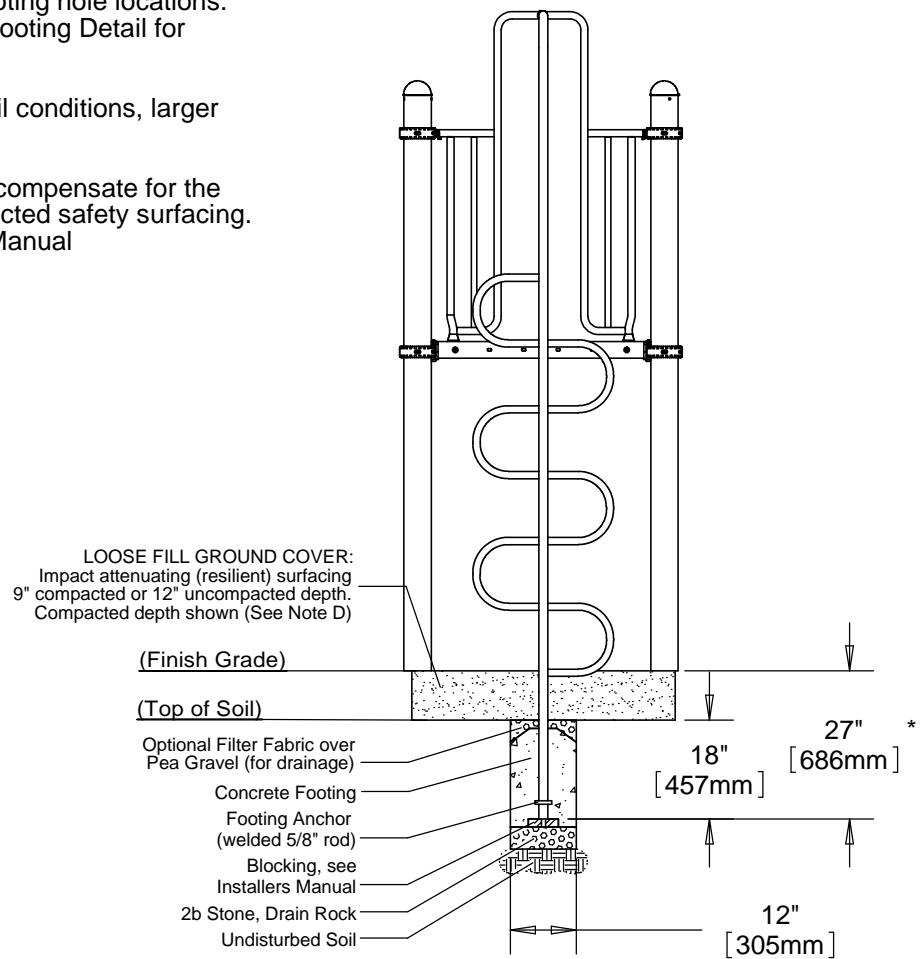
Step 1

Refer to Footing Layout and mark footing hole locations. Dig (1) Ø 12" footing hole. Refer to Footing Detail for depth and details.

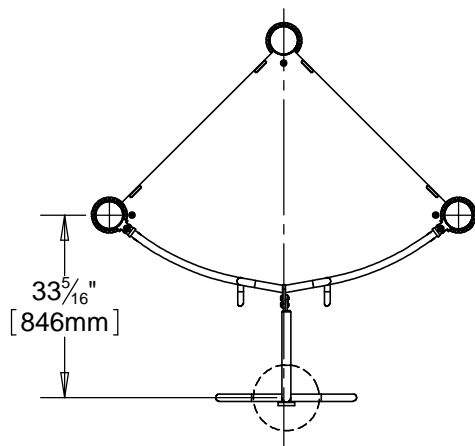
IMPORTANT: For areas with soft soil conditions, larger footings may be required.

* Footing depth must be adjusted to compensate for the depth/thickness requirements of selected safety surfacing. See Section 06.1 of the Installation Manual

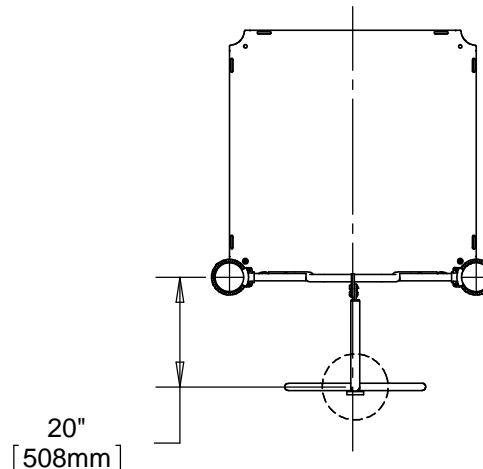
Footing Detail



Top View - Footing Layout
R5 Curved Deck Configuration



Top View - Footing Layout
R5 Square Deck Configuration



Step 2

Attach appropriate Transition Wall to deck. Place Snake Climber in the footing hole and attach to the Transition Wall as shown in Figure 1.1.
(See Notes A & C)

Step 3

Fully tighten all fasteners according to the "TIGHTENING TORQUE FOR HARDWARE" section of the Installation Manual.

Step 4

Plumb and level entire component. Pour concrete into footing hole. Allow at least 72 hours to cure before using this equipment. (See Note B)

Step 5

Place appropriate compliant protective surfacing under and around Snake Climber. (See Note D)

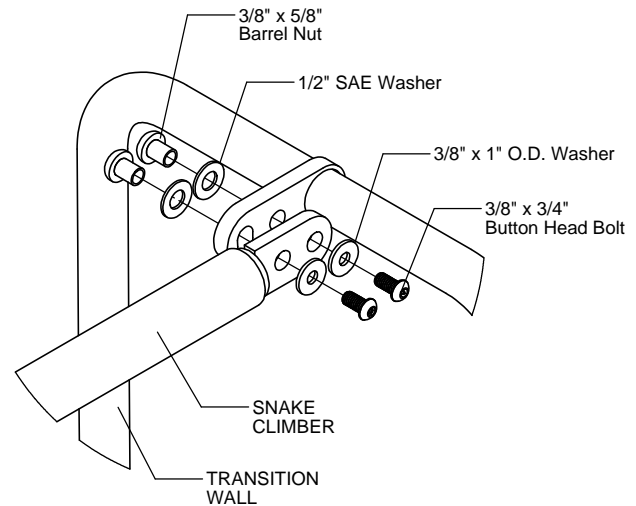


Figure 1.1

Specifications

SNAKE CLIMBER:

Shall be constructed of 1.660" O.D 11 gauge steel tubing with welded 1.315" O.D 12 gauge steel tube rungs. The Snake Climber has a multi-stage baked on powder coat finish.

HARDWARE:

Shall be stainless steel, zinc/nickel plated or galvanized as required to resist rust and corrosion.

Parts List

Part #	DESCRIPTION	QTY
Varies	Snake Climber R5	1
9103032-TR	Bolt Button Head 3/8" x 3/4"	2
9333002	Washer Flat 3/8" x 1" O.D. x .100" thick	2
9345002	Washer Flat SAE 1/2"	2
9443022-TR	Nut Barrel 3/8" x 5/8" BH	2

Maintenance

Periodically tighten all screws, bolts and nuts. A periodic inspection of all parts is necessary. If a part is broken or worn, replace immediately. For general maintenance please refer to our Playground Maintenance Manual.