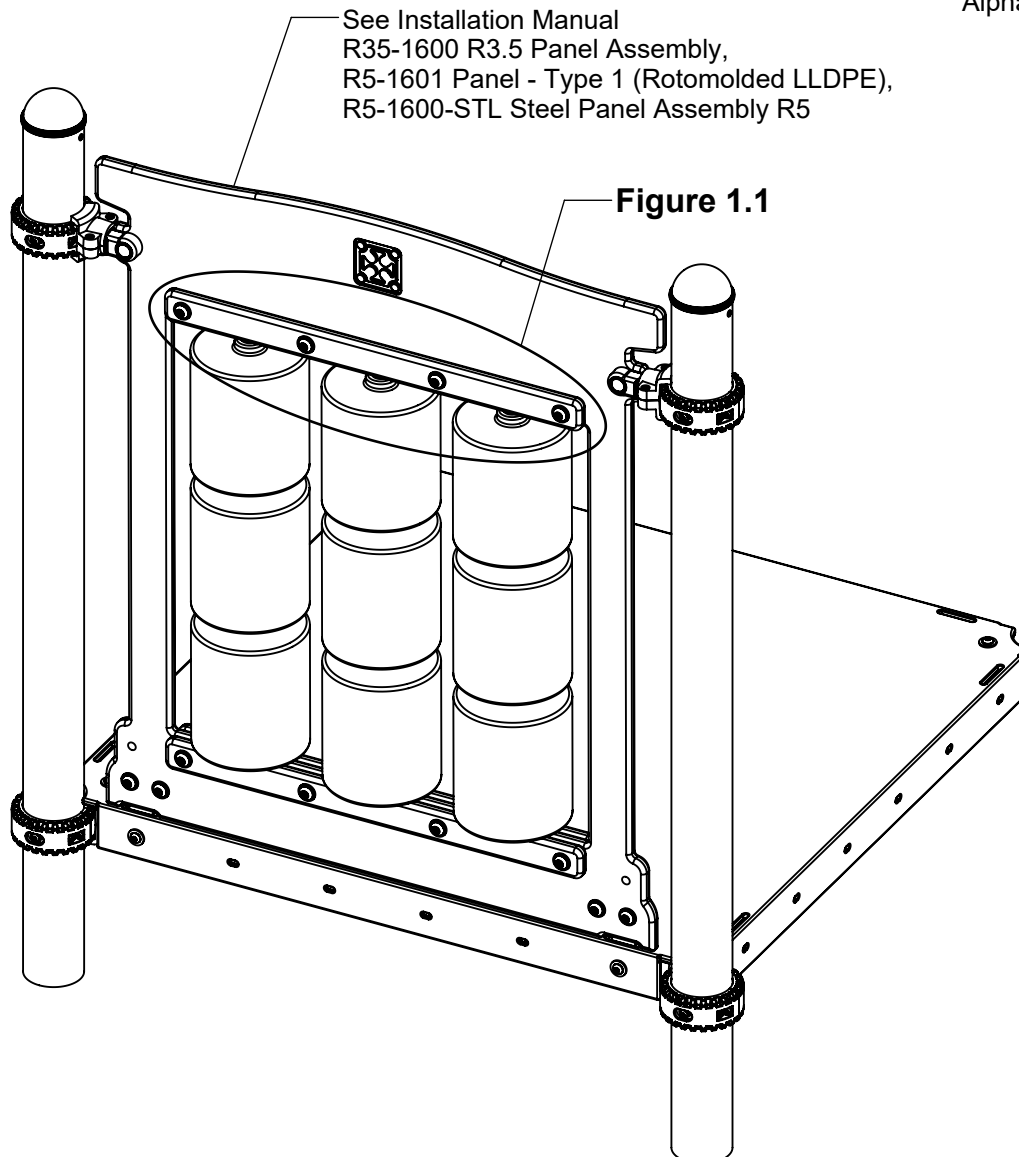


## IMPORTANT NOTES: Read First

(A) Use liquid thread lock (such as Loctite®) with all threaded hardware. **Important:** Liquid thread lock (prior to curing) helps to eliminate the common problem of "thread seizure" in stainless steel hardware by serving as a lubricant during assembly.

(B) Refer to Installation Manual for R35-1600 R3.5 Panel Assembly, R5-1601 Panel - Type 1 (Rotomolded LLDPE) and R5-1600-STL Steel Panel Assembly R5 installation instructions.

**FIGURE 1**  
Dino, Tic-Tac-Toe &  
Alphabet Panel



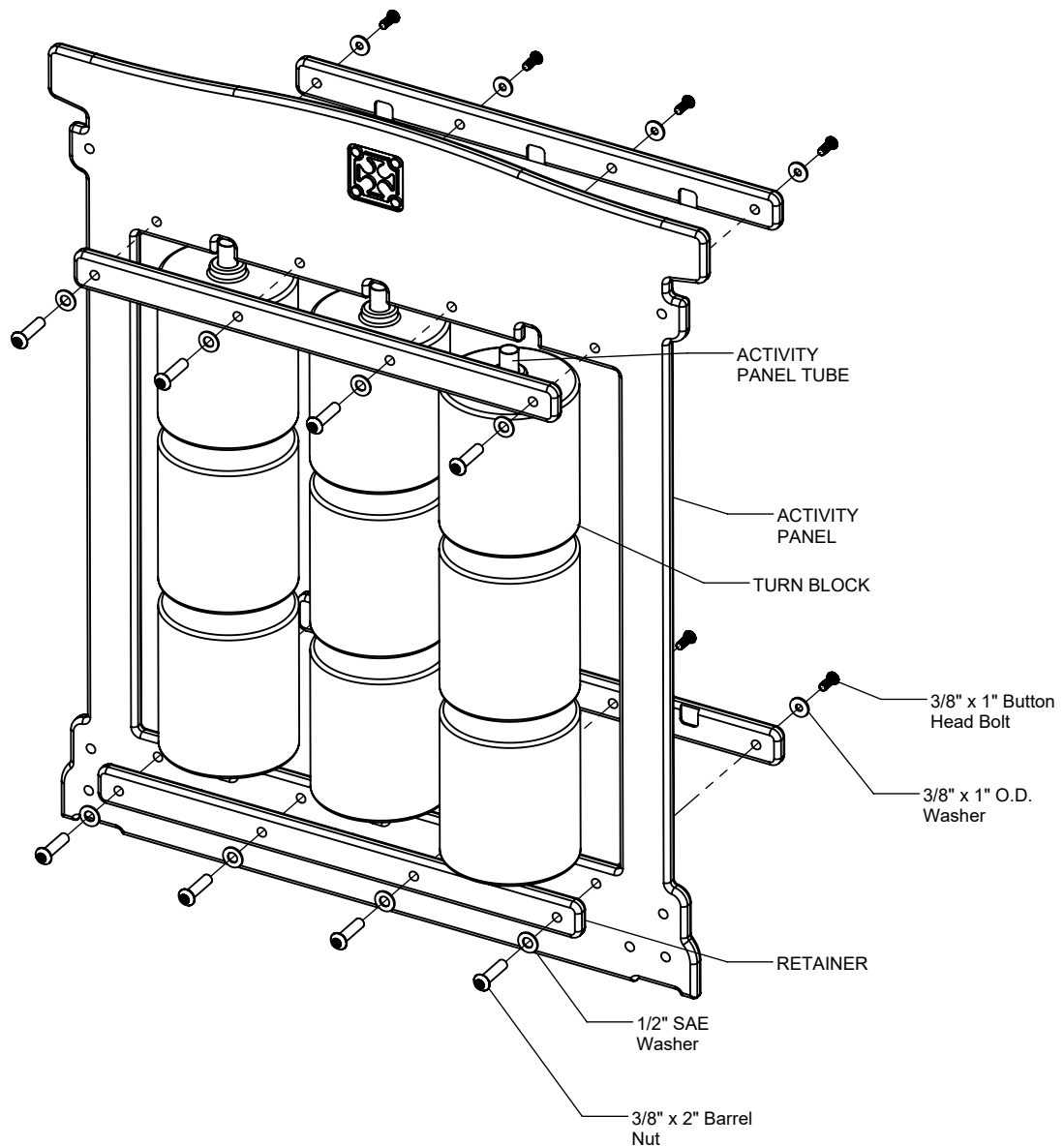
**NOTE:** R35 Dino, Tic-Tac-Toe & Alphabet Panel deck mount shown. Other configurations will vary slightly, but does not affect assembly.

## R35 Panel

### Step 1 (Factory Assembled)

Place Turn Blocks onto Activity Panel Tubes.  
Attach tubes and Retainers to Activity Panel as shown in Figure 1.1. (See Note A)

**NOTE:** See assembly instruction R35-1600 R3.5 Panel Assembly for complete deck mount or ground mount assembly.

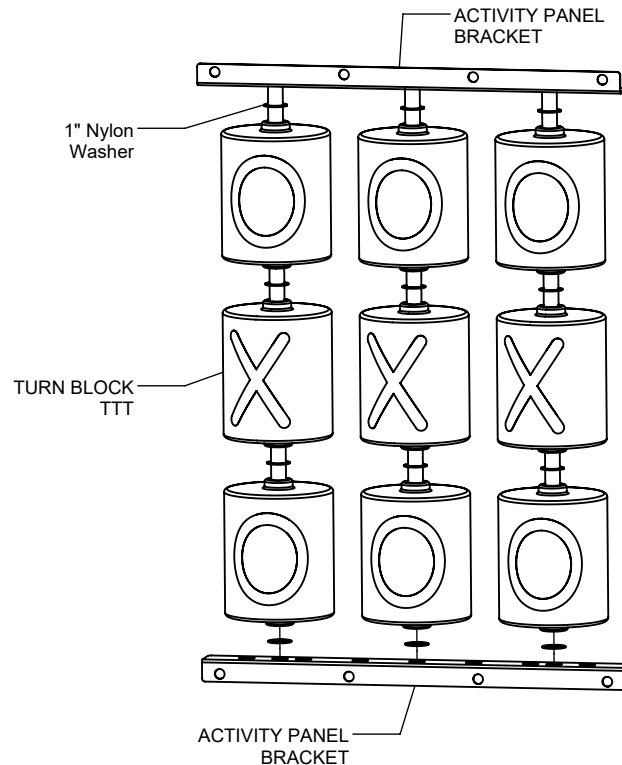


**Figure 1.1**

## R5 Panel

### Step 2 (Factory Assembled)

Place Nylon Washers, Blocks and Activity Panel Bracket onto Activity Panel Weldment as shown in Figure 3.

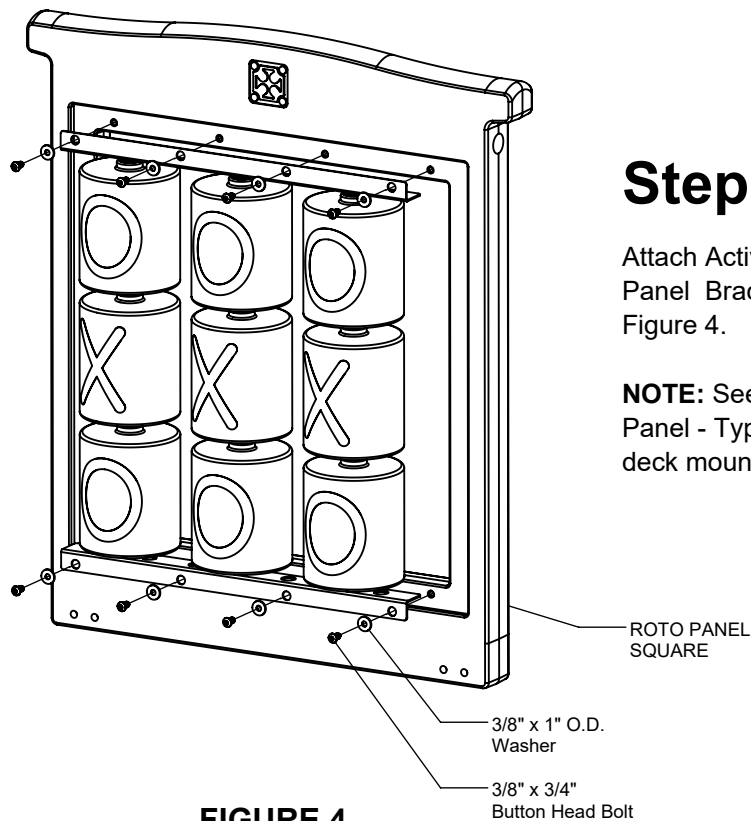


**FIGURE 3**

### Step 3 (Factory Assembled)

Attach Activity Panel Weldment Bracket and Activity Panel Bracket to ROTO Panel Square as shown in Figure 4.

**NOTE:** See assembly instruction R5-1601 Panel - Type 1 (ROTOMOLDED LLDPE) for complete deck mount or ground mount assembly.

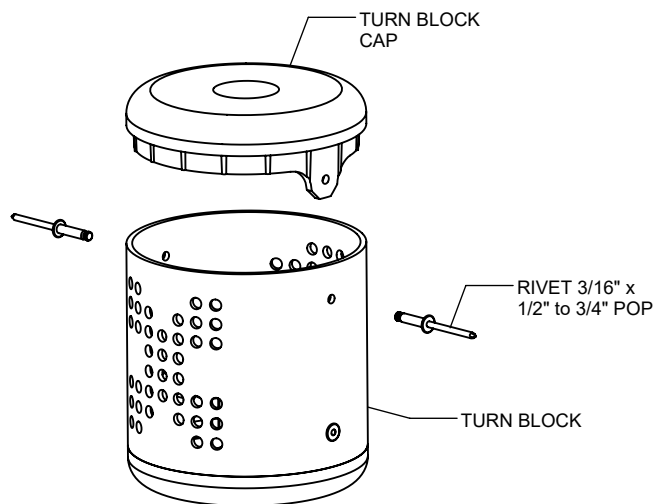


**FIGURE 4**

## R5 Steel Panel

### Step 4 (Factory Assembled)

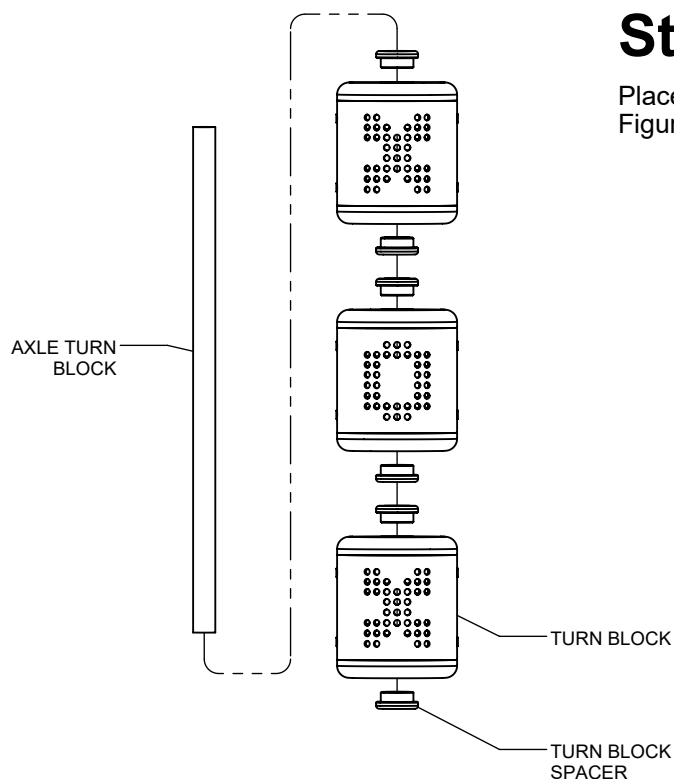
Attach Steel Turn Block Cap to Steel Turn Block as shown in Figure 5.



**FIGURE 5**

### Step 5 (Factory Assembled)

Place Turn Blocks onto Turn Block Axle as shown in Figure 6.



**FIGURE 6**

## Step 6 (Factory Assembled)

Place Nylon Washers, Blocks and Activity Panel Bracket onto Activity Panel Weldment as shown in Figure 7.

**NOTE:** See assembly instruction R5-1600-STL Steel Panel Assembly R5 for complete deck mount or ground mount assembly.

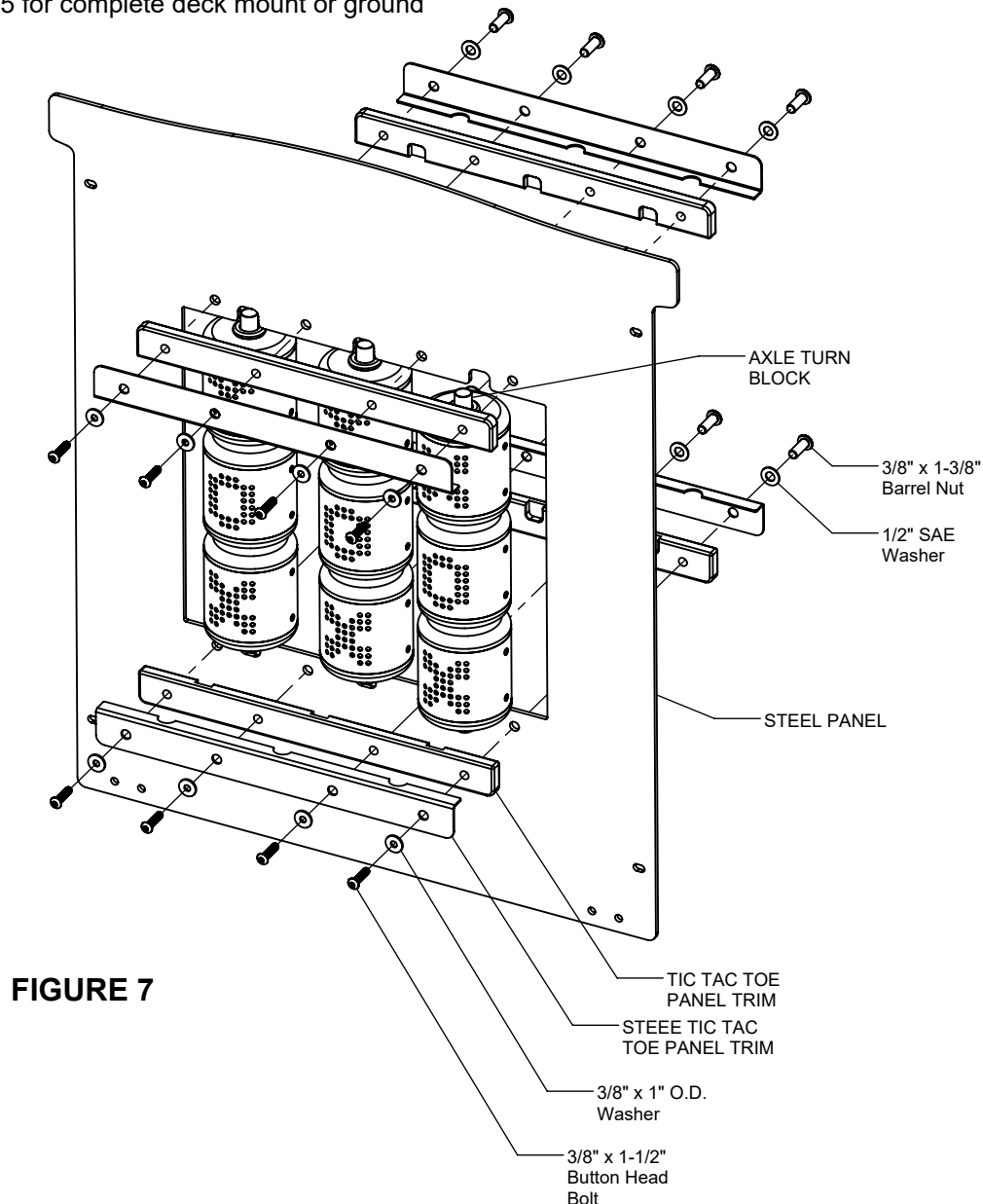


FIGURE 7

## Step 7

Fully tighten all fasteners according to the "TIGHTENING TORQUE FOR HARDWARE" section of the Installation Manual.

## Assembled Parts List

R35 DINO		
Part #	DESCRIPTION	QTY
DE-0005-DNO	Turn Block Dino	9
EG-8105	Activity Panel R3.5	1
EG-8105-R	Activity Panel Retainer R3.5	4
LE-0075-2950	Activity Panel Tube 29.5"	3
9103052-TR	Bolt Button Head 3/8" x 1"	8
9333002	Washer Flat 3/8" x 1" O.D. x .100" thick	8
9345002	Washer Flat SAE 1/2"	8
9443092-TR	Nut Barrel 3/8" x 2" BH	8

R35 TIC-TAC-TOE		
Part #	DESCRIPTION	QTY
DE-0005-TTT	Turn Block Tic Tac Toe	9
EG-8105	Activity Panel R3.5	1
EG-8105-R	Activity Panel Retainer R3.5	4
LE-0075-2950	Activity Panel Tube 29.5"	3
9103052-TR	Bolt Button Head 3/8" x 1"	8
9333002	Washer Flat 3/8" x 1" O.D. x .100" thick	8
9345002	Washer Flat SAE 1/2"	8
9443092-TR	Nut Barrel 3/8" x 2" BH	8

R35 ALPHABET		
Part #	DESCRIPTION	QTY
DE-0005-AIE	Turn Block AIE	3
DE-0005-PBM	Turn Block PBM	3
DE-0005-PMT	Turn Block PMT	3
EG-8105	Activity Panel R3.5	1
EG-8105-R	Activity Panel Retainer R3.5	4
LE-0075-2950	Activity Panel Tube 29.5"	3
9103052-TR	Bolt Button Head 3/8" x 1"	8
9333002	Washer Flat 3/8" x 1" O.D. x .100" thick	8
9345002	Washer Flat SAE 1/2"	8
9443092-TR	Nut Barrel 3/8" x 2" BH	8

R5 DINO		
PART #	DESCRIPTION	QTY
BE-4053	Activity Panel Bracket	1
DE-0005-DNO	Turn Block Dino	9
FS-1616	Activity Panel Weldment	1
S-1601-R5	Square Panel R5	1
9103032-TR	Bolt Button Head 3/8" x 3/4"	8
9333002	Washer Flat 3/8" x 1" O.D. x .100" thick	8
9369060	1" nylon washer	14

R5 TIC-TAC-TOE		
PART #	DESCRIPTION	QTY
BE-4053	Activity Panel Bracket	1
DE-0005-TTT	Turn Block Tic Tac Toe	9
FS-1616	Activity Panel Weldment	1
S-1601-R5	Square Panel R5	1
9103032-TR	Bolt Button Head 3/8" x 3/4"	8
9333002	Washer Flat 3/8" x 1" O.D. x .100" thick	8
9369060	1" nylon washer	12

R5 ALPHABET		
PART #	DESCRIPTION	QTY.
BE-4053	Activity Panel Bracket	1
DE-0005-AIE	Turn Block AIE	3
DE-0005-PBM	Turn Block PBM	3
DE-0005-PMT	Turn Block PMT	3
FS-1616	Activity Panel Weldment	1
S-1601-R5	Square Panel R5	1
9103032-TR	Bolt Button Head 3/8" x 3/4"	8
9333002	Washer Flat 3/8" x 1" O.D. x .100" thick	8
9369060	1" nylon washer	12

R5 STEEL TIC-TAC-TOE		
PART #	DESCRIPTION	QTY
AF-0392	Steel Turn Block Panel R5	1
BE-0387	Steel Tic Tac Toe Panel Trim	4
EE-0225	Steel Turn Block Spacer	18
EE-0232	Tic Tac Toe Panel Trim	4
GF-7001-STB	Steel Turn Block Cap	18
IE-0042-B	Steel Tic-Tac-Toe Turn Block	9
LF-0003	Steel Turn Block Axle	3
9103072-TR	Bolt Button Head 3/8" x 1-1/2"	8
9333002	Washer Flat 3/8" x 1" O.D. x .100" thick	8
9345002	Washer Flat SAE 1/2"	8
9443062-TR	Nut Barrel 3/8" x 1-3/8" BH	8
9610012	Rivet 3/16" x 1/2" to 3/4" Pop	36



## Assembled Parts List

R5 STEEL ALPHABET		
PART #	DESCRIPTION	QTY
AF-0392	Steel Turn Block Panel R5	1
BE-0387	Steel Tic Tac Toe Panel Trim	4
EE-0225	Steel Turn Block Spacer	18
EE-0232	Tic Tac Toe Panel Trim	4
GF-7001-STB	Steel Turn Block Cap	18
IE-0039-B	Steel ABC Turn Block 2 - Block	3
IE-0040-B	Steel ABC Turn Block 3 - Block	3
IE-0041-B	Steel ABC Turn Block 1 - Block	3
LF-0003	Steel Turn Block Axle	3
9103072-TR	Bolt Button Head 3/8" x 1-1/2"	8
9333002	Washer Flat 3/8" x 1" O.D. x .100" thick	8
9345002	Washer Flat SAE 1/2"	8
9443062-TR	Nut Barrel 3/8" x 1-3/8" BH	8
9610012	Rivet 3/16" x 1/2" to 3/4" Pop	36

## Specifications

### TURN BLOCK:

Shall be constructed of UV-stabilized, rotationally molded, linear, low density polyethylene with an average wall thickness of .250".

### ACTIVITY PANEL R35 &

### ACTIVITY PANEL RETAINER R35:

Shall be made from high density 3/4" sheet plastic specially formulated for optimum UV stability and color retention.

### R35 PANEL BRACKET:

Shall be fabricated using 3/16" sheet steel and will have a multi-stage baked-on powder coat finish.

### ACTIVITY PANEL BRACKET:

Shall be fabricated using 12ga HR Sheet Steel A36 and will have a multi-stage baked-on powder coat finish.

### ACTIVITY PANEL WELDMENT:

Shall be fabricated using 12ga HR Sheet Steel A36 with 0.75" Galv. EMT 18ga. and will have a multi-stage baked-on powder coat finish.

### ACTIVITY PANEL TUBE 29.5":

Shall be fabricated using 0.75" galvanized EMT 18ga. steel tubing.

### STEEL TURN BLOCK PANEL R5:

Shall be fabricated using 1/4" HR Sheet Steel A36 and will have a multi-stage baked-on powder coat finish.

### STEEL TIC-TAC-TOE PANEL TRIM:

Shall be fabricated using 12ga HR Sheet Steel A36 and will have a multi-stage baked-on powder coat finish.

### STEEL TURN BLOCK SPACER & TIC TAC TOE PANEL TRIM:

Shall be made from high density 3/4" sheet plastic specially formulated for optimum UV stability and color retention.

### STEEL TIC TAC TOR TURN BLOCK & STEEL ABC TURN BLOCKS 1, 2 AND 3:

Shall be fabricated from 5" OD Galv T.S. 11 ga and will have a multi-stage baked-on powder coat finish.

### STEEL TURN BLOCK AXLE:

Shall be fabricated using 0.75" Galv EMT 18ga. and will have a multi-stage baked-on powder coat finish.

### STEEL TURN BLOCK CAP:

Shall be precision die-cast from a high-strength aluminum alloy.

### MOUNTING LUGS & SOCKET CLAMPS:

Shall be precision die-cast from a high-strength aluminum alloy and will have a multi-stage baked-on powder coat finish.

### 1" NYLON WASHER:

Shall be fabricated from Nylon 6/10.

### HARDWARE:

Shall be stainless steel, zinc/nickel plated or galvanized as required to resist rust and corrosion.

## Maintenance

Periodically tighten all screws, bolts and nuts. A periodic inspection of all parts is necessary. If a part is broken or worn, replace immediately. For general maintenance please refer to our Playground Maintenance Manual.

