

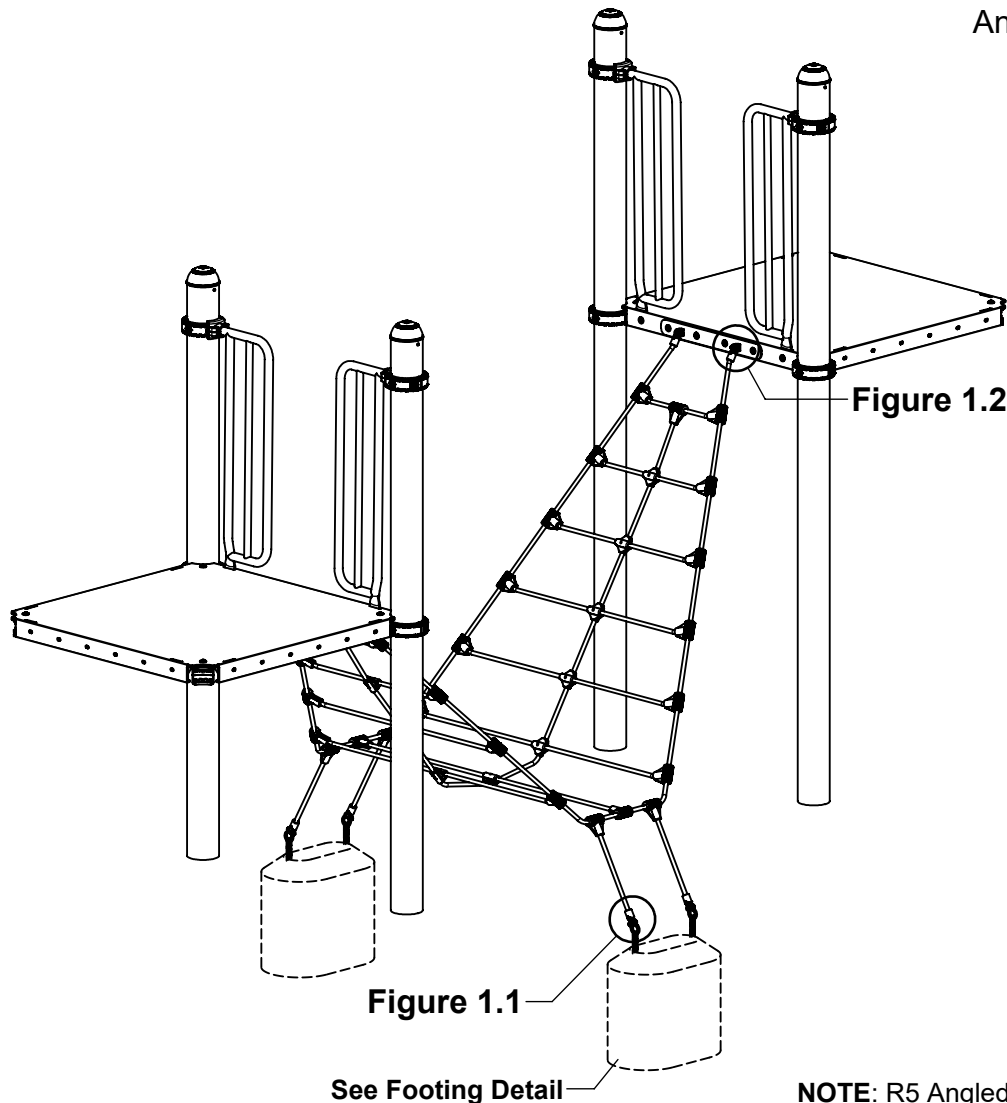
IMPORTANT NOTES: Read First

(A) Use liquid thread lock (such as Loctite®) with all threaded hardware. **Important:** Liquid thread lock (prior to curing) helps to eliminate the common problem of "thread seizure" in stainless steel hardware by serving as a lubricant during assembly.

(B) Do not pour concrete until the equipment is completely assembled, leveled and plumbed. Concrete must be allowed to cure completely before using the equipment (at least 72 hours).

(C) An appropriate energy absorbing safety surface is required under and around all playground equipment. Loose fill protective surfacing is shown only as an example for the purpose of this assembly instruction. Other surfacing material may vary in thickness and/or compression depths. See free publication - The Handbook for Public Playground Safety, Publication #325 at www.cpsc.gov for the surfacing appropriate for the fall height of the equipment or consult your surfacing supply representative.

FIGURE 1
Angled Net Link



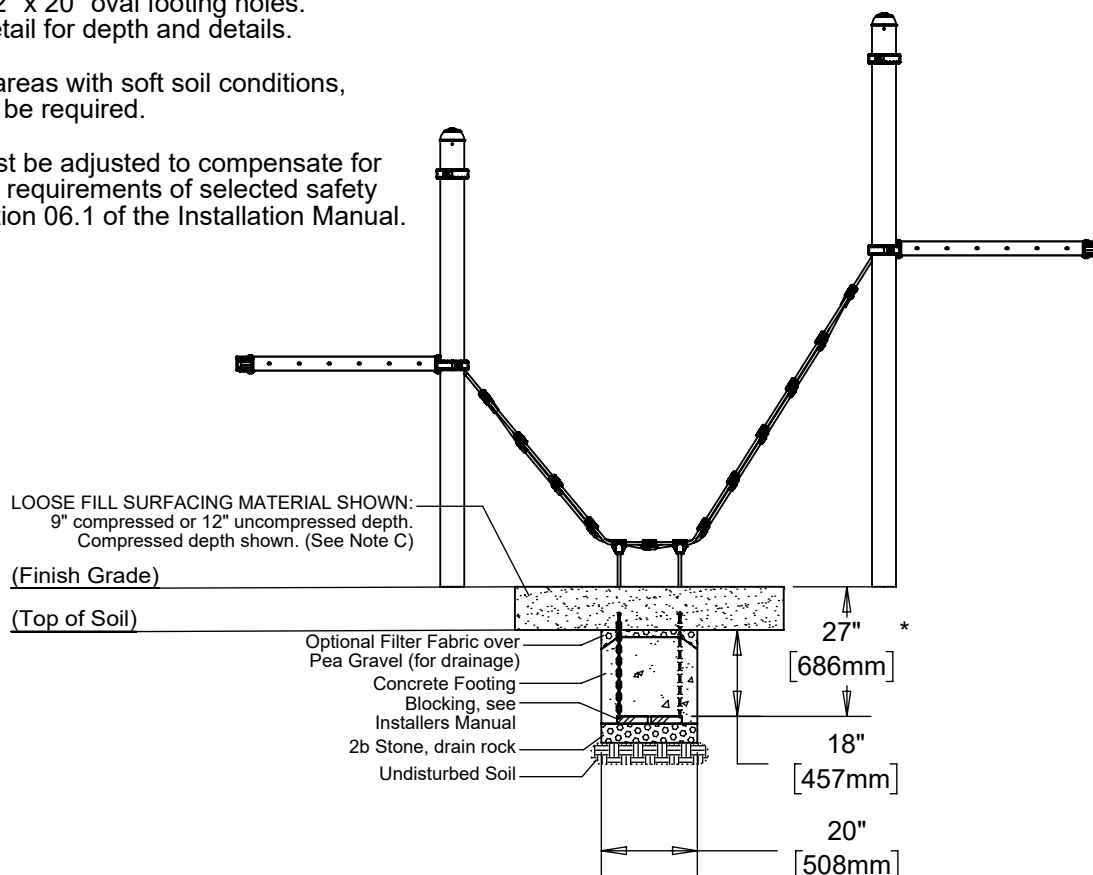
Step 1

Refer to Footing Layout and mark footing hole locations. Dig (2) 12" x 20" oval footing holes. Refer to Footing Detail for depth and details.

IMPORTANT: For areas with soft soil conditions, larger footings may be required.

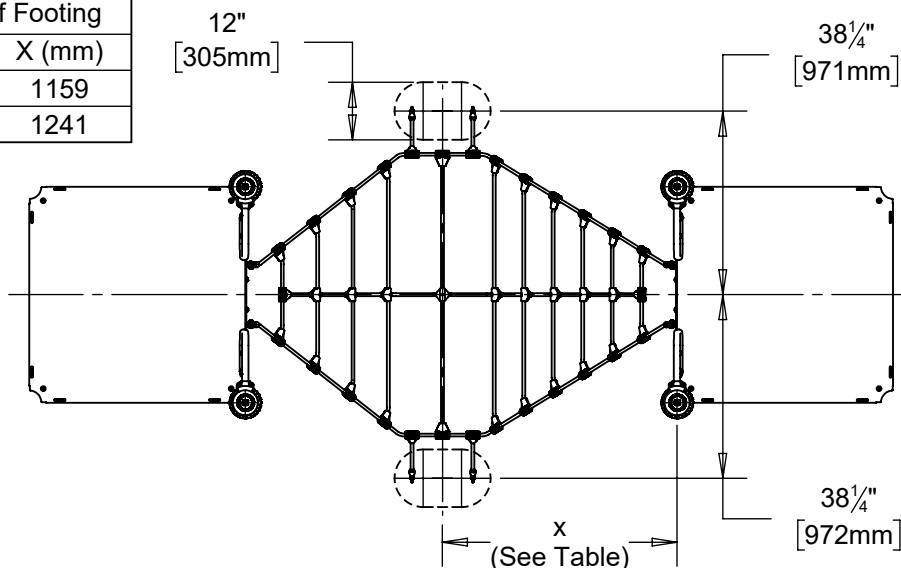
* Footing depth must be adjusted to compensate for the depth/thickness requirements of selected safety surfacing. See Section 06.1 of the Installation Manual.

Footing Detail



Top View - Footing Layout

Footing Distance Table		
Center of Deck to Center of Footing		
Assembly	X (in.)	X (mm)
R3.5	45-5/8"	1159
R5	48-7/8"	1241



Step 2

Attach Chains to Angled Net Link as shown in Figure 1.1. (See Note A)

NOTE: 4 Places

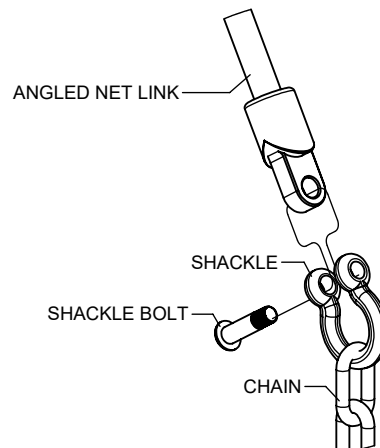


Figure 1.1

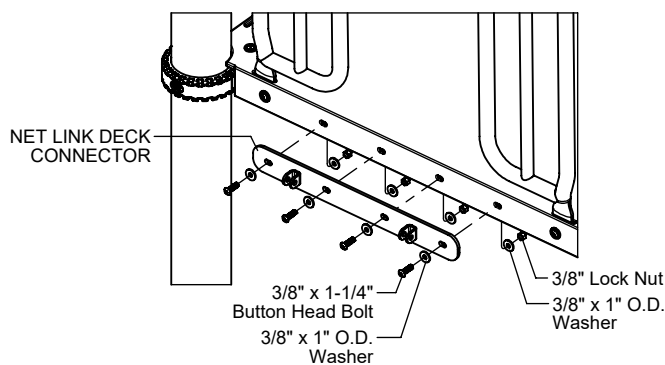


FIGURE 2

Step 3

Attach Net Link Deck Connectors to decks as shown in Figure 2. (See Note A)

NOTE: 2 Places

Step 4

Attach Angled Net Link to Net Link Deck Connectors as shown in Figure 1.2. (See Note A)

NOTE: 4 Places

Step 5

Fully tighten all fasteners according to the "TIGHTENING TORQUE FOR HARDWARE" section of the Installation Manual.

Step 6

Place Chains into footing holes and adjust Angled Net Link to desired tautness. Secure Chains, plumb and level entire component. Pour concrete into footing holes. Allow at least 72 hours to cure before using this equipment. (See Note B)

Step 7

Place required protective surfacing under and around Angled Net Link. (See Note C)

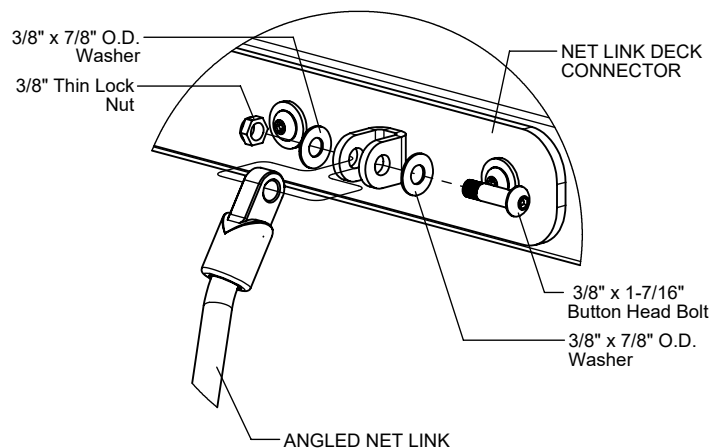


Figure 1.2

ANGLED NET LINK INSTALLATION INSTRUCTIONS

1528
Page 4 of 4

Parts List

R3.5 ASSEMBLY		
Part #	DESCRIPTION	QTY.
FS-1528	Angled Net Link Deck Connector	2
HE-0008-16	16-Link Galvanized Chain	4
HG-0012	Angled Net Link Net R3.5	1
451161-SS	Swing Shackle - Stainless Steel	4
9103062-TR	Bolt Button Head 3/8" x 1-1/4"	8
9103200-TR	Bolt Button Head 3/8" x 1-7/16"	4
9333002	Washer Flat 3/8" x 1" O.D. x .100" thick	16
9333042	Washer Flat 3/8" x 7/8" O.D.	8
9413002	Nut Lock 3/8"	8
9423002	Nut Lock Thin 3/8"	4

R5 ASSEMBLY		
Part #	DESCRIPTION	QTY.
FS-1528	Angled Net Link Deck Connector	2
HE-0008-16	16-Link Galvanized Chain	4
HF-0014	Angled Net Link Net R5	1
451161-SS	Swing Shackle - Stainless Steel	4
9103062-TR	Bolt Button Head 3/8" x 1-1/4"	8
9103200-TR	Bolt Button Head 3/8" x 1-7/16"	4
9333002	Washer Flat 3/8" x 1" O.D. x .100" thick	16
9333042	Washer Flat 3/8" x 7/8" O.D.	8
9413002	Nut Lock 3/8"	8
9423002	Nut Lock Thin 3/8"	4

Specifications

16-LINK GALVANIZED CHAIN:

Shall be 5/0 galvanized low-carbon steel chain with silver shield finish.

ANGLED NET LINK:

Shall be made from 16mm steel-reinforced rope with high-strength copolymer plastic intersection connectors and machined aluminum end ferrules.

ANGLED NET LINK DECK CONNECTOR:

Shall be fabricated using 1/4" thick steel plate with welded 3/16" thick steel anchors. The Angled Net Link Deck Connector shall have a multi-stage baked-on powder coat finish.

HARDWARE:

Shall be stainless steel, zinc/nickel plated or galvanized as required to resist rust and corrosion.

Maintenance

Periodically tighten all screws, bolts and nuts. A periodic inspection of all parts is necessary. If a part is broken or worn, replace immediately. For general maintenance please refer to our Playground Maintenance Manual.



www.playcraftsystems.com
For Customer Service Call
800.333.8519 (U.S.A.) or 541.955.9199 (International)

Rev D
9/16/2019