

IMPORTANT NOTES: Read First

(A) Use liquid thread lock (such as Loctite®) with all threaded hardware. **Important:** Liquid thread lock (prior to curing) helps to eliminate the common problem of "thread seizure" in stainless steel hardware by serving as a lubricant during assembly.

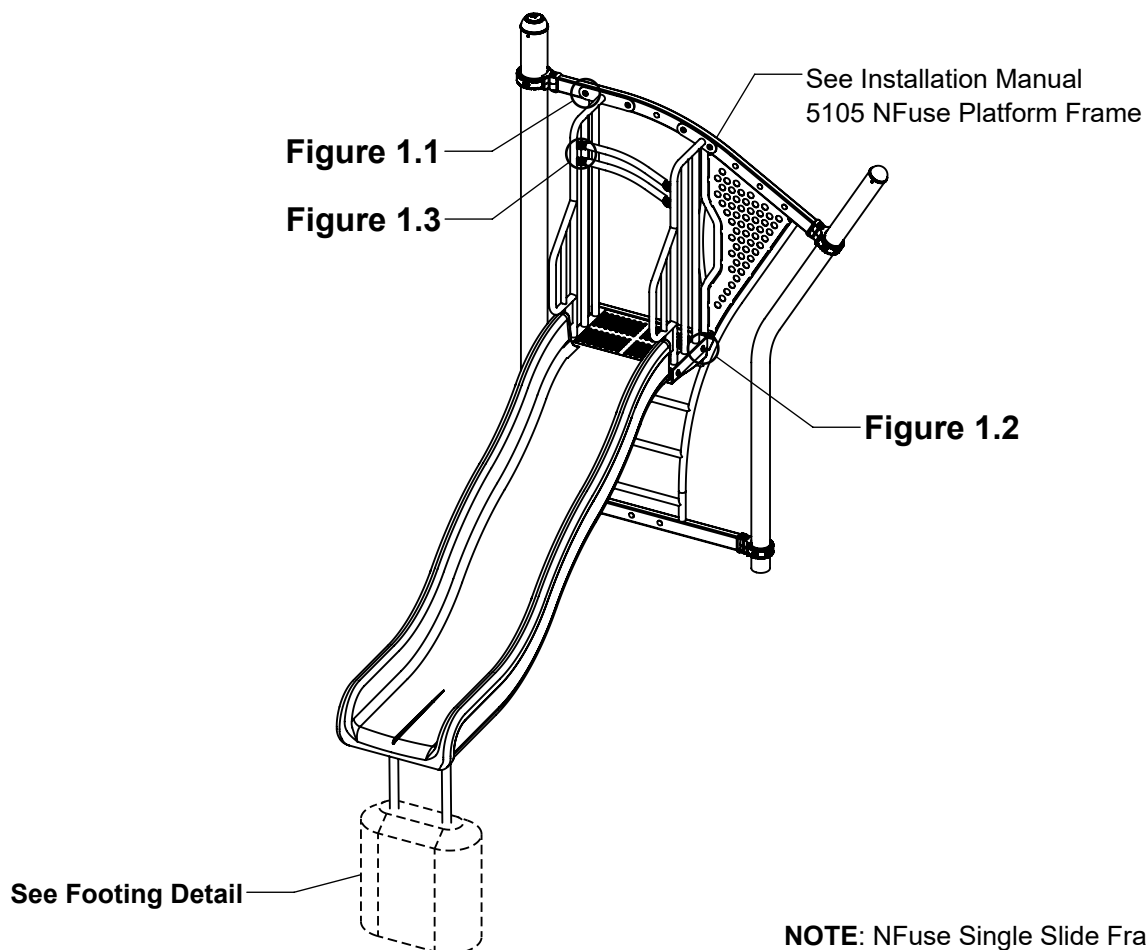
(B) Do not pour concrete until the equipment is completely assembled, leveled and plumbed. Concrete must be allowed to cure completely before using the equipment (at least 72 hours).

(C) Refer to Installation Manual for 5105 NFuse Platform Frame.

(D) For slides with an entry elevation of 48" [1219mm] or greater, the exit height must be between 7" [180mm] and 15" [380mm] from finish grade. Exit region must always have a downward slope between 0° and 4°.

(E) An appropriate energy absorbing safety surface is required under and around all playground equipment. Loose fill protective surfacing is shown only as an example for the purpose of this assembly instruction. Other surfacing material may vary in thickness and/or compression depths. See free publication - The Handbook for Public Playground Safety, Publication #325 at www.cpsc.gov for the surfacing appropriate for the fall height of the equipment or consult your surfacing supply representative.

FIGURE 1
NFuse Single Slide Frame



NOTE: NFuse Single Slide Frame Left shown. Other configurations will vary slightly, but does not affect assembly.

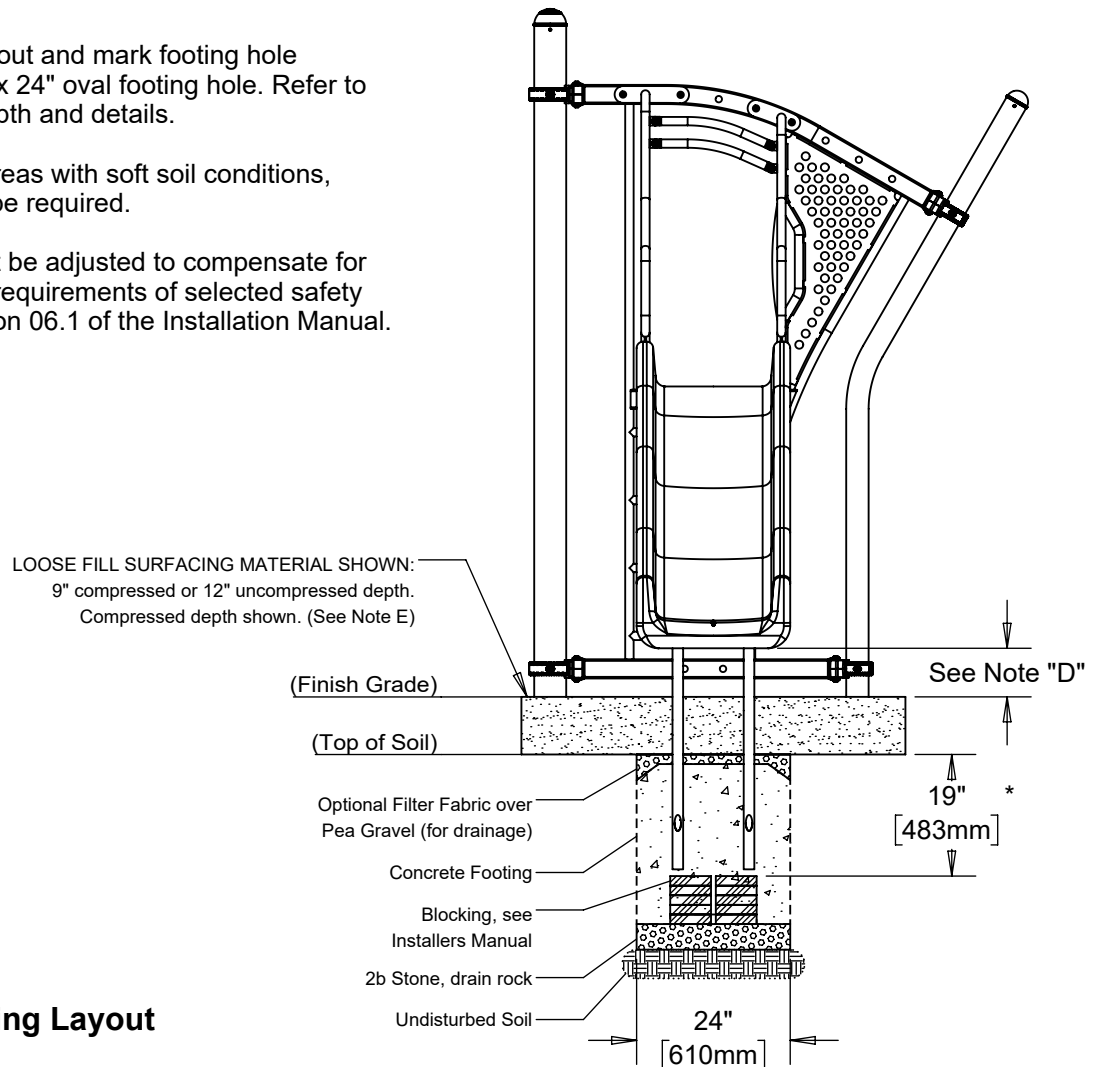
Step 1

Refer to Footing Layout and mark footing hole location. Dig (1) 12" x 24" oval footing hole. Refer to Footing Detail for depth and details.

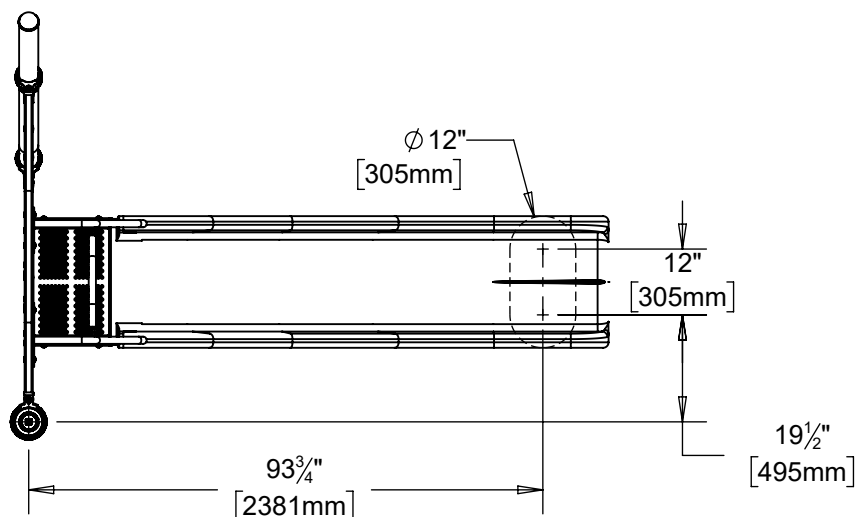
IMPORTANT: For areas with soft soil conditions, larger footings may be required.

* Footing depth must be adjusted to compensate for the depth/thickness requirements of selected safety surfacing. See Section 06.1 of the Installation Manual.

Elevation View



Top View - Footing Layout



Step 2

Remove unnecessary plugs from Platform Frame and attach Arch Slide Landing as shown in Figure 2. (See Note A)

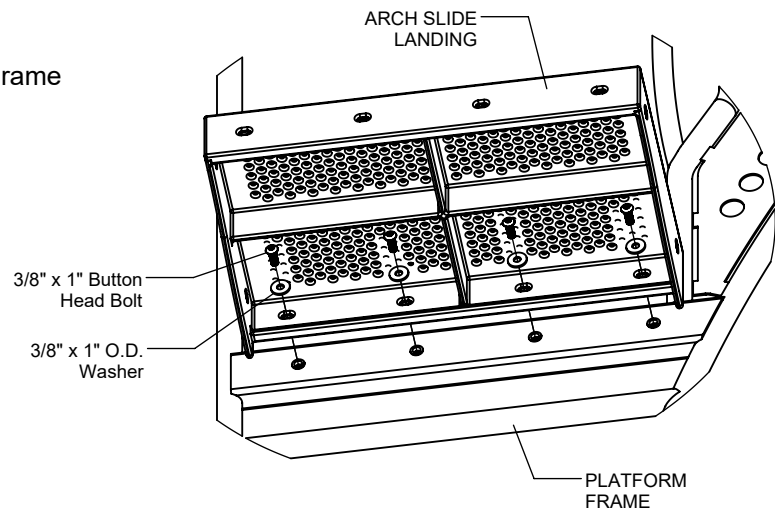


FIGURE 2

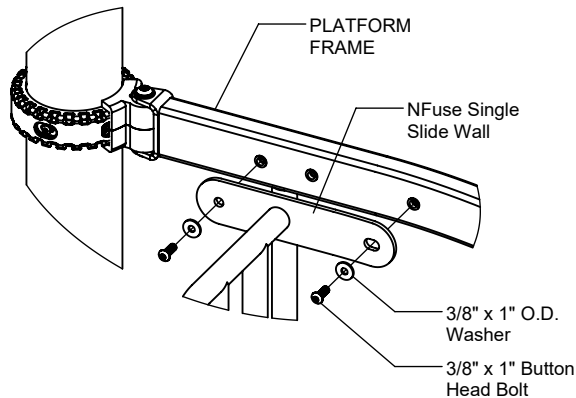


Figure 1.1

Step 3

Remove unnecessary plugs from Platform Frame and attach NFuse Single Slide Wall as shown in Figure 1.1. (See Note A)

Step 4

Attach NFuse Single Slide Wall to Arch Slide Landing as shown in Figure 1.2. (See Note A)

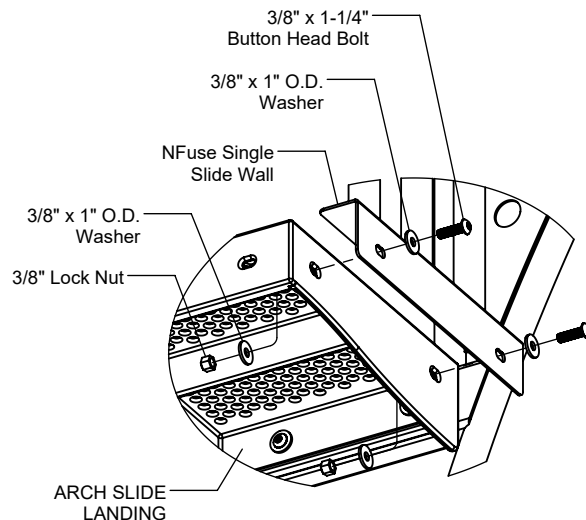


Figure 1.2

Step 5

Attach Top Rail to NFuse Single Slide Wall as shown in Figure 1.3a. (See Note A)

NOTE: Top Rail Tab must be attached with offset oriented as shown in Figure 1.3b

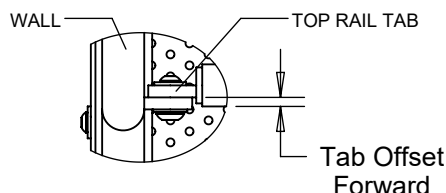


Figure 1.3b

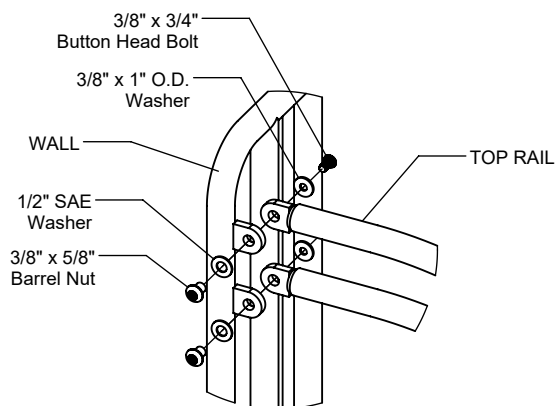


Figure 1.3a

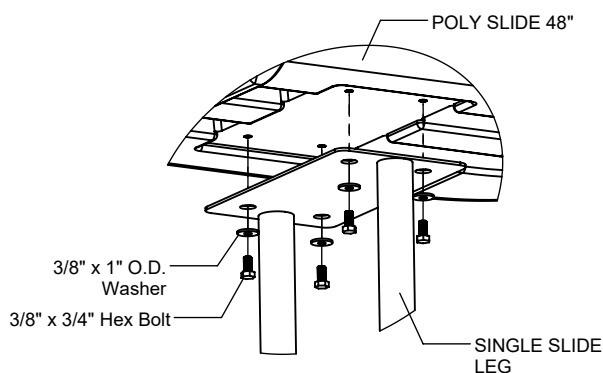


FIGURE 3

Step 6

Attach Single Slide Leg to Poly Slide 48\"/>

Step 7

Attach Poly Slide 48\"/>

Step 8

Fully tighten all fasteners according to the "TIGHTENING TORQUE FOR HARDWARE" section of the Installation Manual.

Step 9

Plumb and level entire component. Pour concrete into footing hole. Allow at least 72 hours to cure before using this equipment. (See Note B)

Step 10

Place required protective surfacing under and around NFuse Single Slide Frame. (See Note E)

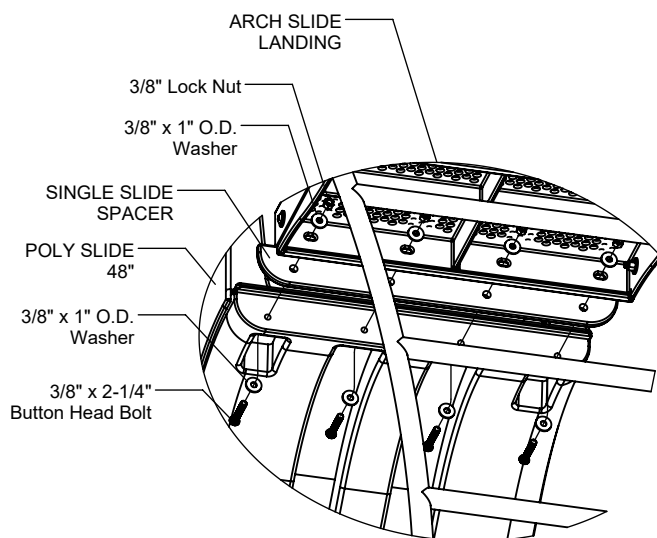


FIGURE 4

NFUSE SINGLE SLIDE FRAME INSTALLATION INSTRUCTIONS

5701
Page 5 of 5

Parts List

LEFT		
Part #	DESCRIPTION	QTY
CE-0522	Arch Slide Landing	1
DE-4276-CAN	Poly Slide 48" Canada	1
EE-0009	Single Slide Spacer Canada	1
FS-1701	Single Slide Leg	1
FS-5701-LSW	NFuse Single Slide Left Short Wall	1
FS-5701-LTW	NFuse Single Slide Left Tall Wall	1
FS-5701-TR	NFuse Single Slide - Top Rail	2
S-5105	NFuse Platform Frame	1
9103032-TR	Bolt Button Head 3/8" x 3/4"	4
9103052-TR	Bolt Button Head 3/8" x 1"	8
9103062-TR	Bolt Button Head 3/8" x 1-1/4"	4
9103102-TR	Bolt Button Head 3/8" x 2-1/4"	4
9123032	Bolt Hex 3/8" x 3/4"	4
9333002	Washer Flat 3/8" x 1" O.D. x .100" thick	32
9345002	Washer Flat SAE 1/2"	4
9413002	Nut Lock 3/8"	8
9443022-TR	Nut Barrel 3/8" x 5/8" BH	4

RIGHT		
Part #	DESCRIPTION	QTY
CE-0522	Arch Slide Landing	1
DE-4276-CAN	Poly Slide 48" Canada	1
EE-0009	Single Slide Spacer Canada	1
FS-1701	Single Slide Leg	1
FS-5701-RSW	NFuse Single Slide Right Short Wall	1
FS-5701-RTW	NFuse Single Slide Right Tall Wall	1
FS-5701-TR	NFuse Single Slide - Top Rail	2
S-5105	NFuse Platform Frame	1
9103032-TR	Bolt Button Head 3/8" x 3/4"	4
9103052-TR	Bolt Button Head 3/8" x 1"	8
9103062-TR	Bolt Button Head 3/8" x 1-1/4"	4
9103102-TR	Bolt Button Head 3/8" x 2-1/4"	4
9123032	Bolt Hex 3/8" x 3/4"	4
9333002	Washer Flat 3/8" x 1" O.D. x .100" thick	32
9345002	Washer Flat SAE 1/2"	4
9413002	Nut Lock 3/8"	8
9443022-TR	Nut Barrel 3/8" x 5/8" BH	4

Specifications

ARCH SLIDE LANDING:

Shall be fabricated using punched, formed and welded 12 guage sheet steel and shall be Play-Tuff™ coated after fabrication.

SINGLE SLIDE SPACER CANADA:

Shall be made from high density 3/4" sheet plastic specially formulated for optimum UV stability and color retention.

SINGLE SLIDE LEG.

Shall be fabricated using 1.660 OD 11ga tube steel, with 10ga sheet steel and will have a multi-stage baked on powder coat finish.

NFUSE SINGLE SLIDE SHORT AND TALL WALLS (LEFT & RIGHT).

Shall be fabricated using 1.315 and 1.029 OD tube steel, with 3/8", 1/4" and 12ga sheet steel and will have a multi-stage baked on powder coat finish.

NFUSE SINGLE SLIDE - TOP RAIL.

Shall be fabricated using 1.315 OD tube steel, with 3/8" and 3/16" sheet steel and will have a multi-stage baked on powder coat finish.

POLY SLIDE 48" CANADA:

Shall be constructed of UV-stabilized, rotationally molded, linear, low density polyethylene with an average wall thickness of .250".

HARDWARE:

Shall be stainless steel, zinc/nickel plated or galvanized as required to resist rust and corrosion.

Maintenance

Periodically tighten all screws, bolts and nuts. A periodic inspection of all parts is necessary. If a part is broken or worn, replace immediately. For general maintenance please refer to our Playground Maintenance Manual.



www.playcraftsystems.com
For Customer Service Call
800.333.8519 (U.S.A.) or 541.955.9199 (International)

Rev B
8/23/2024