

## IMPORTANT NOTES: Read First

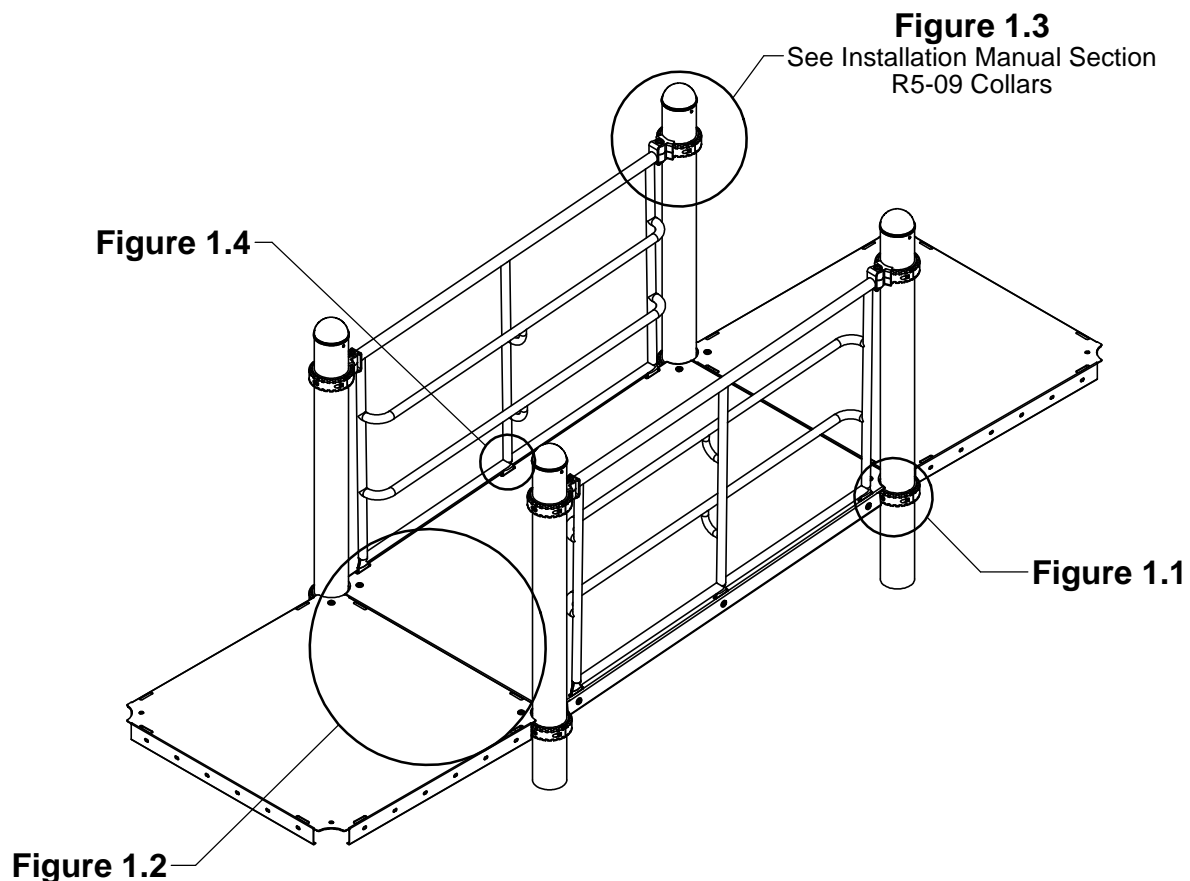
(A) Use liquid thread lock (such as Loctite®) with all threaded hardware. **Important:** Liquid thread lock (prior to curing) helps to eliminate the common problem of "thread seizure" in stainless steel hardware by serving as a lubricant during assembly.

(B) Refer to Installation Manual for 09 Collars assembly instructions.

(C) An appropriate energy absorbing safety surface is required under and around all playground equipment. Loose fill protective surfacing is shown only as an example for the purpose of this assembly instruction. Other surfacing material may vary in thickness and/or compression depths. See free publication - The Handbook for Public Playground Safety, Publication #325 at [www.cpsc.gov](http://www.cpsc.gov) for the surfacing appropriate for the fall height of the equipment or consult your surfacing supply representative.

(D) The Gap between the top of the Ramp and the Bottom of the Wall should be no more than 1". Please refer to the Elevation View.

**FIGURE 1**  
Ramp w/ Rails

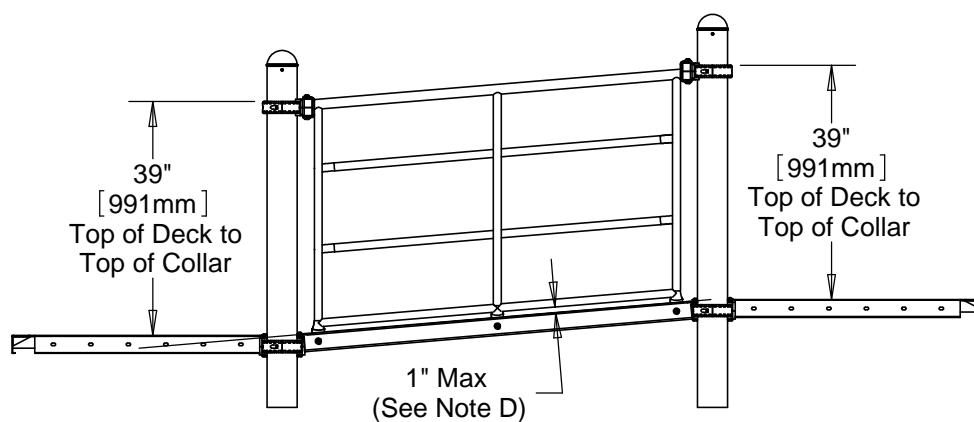


**NOTE:** Ramp with Rails shown.  
Ramp with Walls will vary slightly,  
but does not affect the assembly.

## Step 1

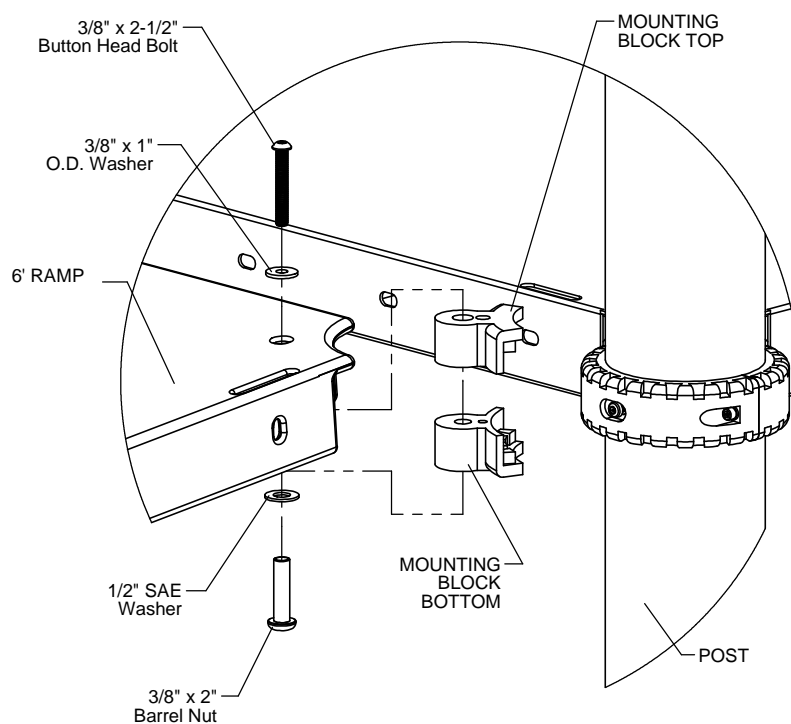
Attach collars at height shown in Elevation View. (See Note B)

### Elevation View



## Step 2

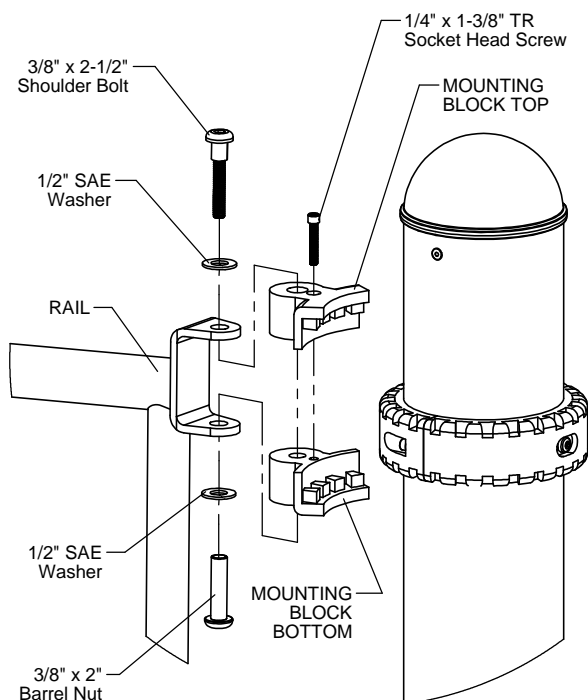
Attach Ramp to posts as shown in Figure 1.1. (See Note A)



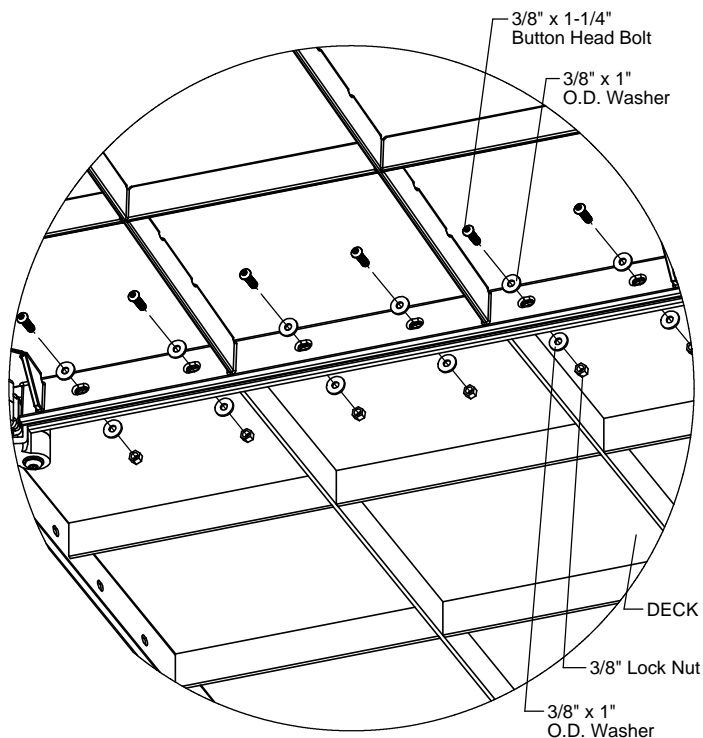
**Figure 1.1**

## Step 3

Attach Ramp to deck(s) as shown in Figure 1.2.  
 (See Note A)



**Figure 1.3**



**Figure 1.2**

## Step 4

Attach Rails to posts as shown in Figure 1.3.  
 (See Note A)

## Step 5

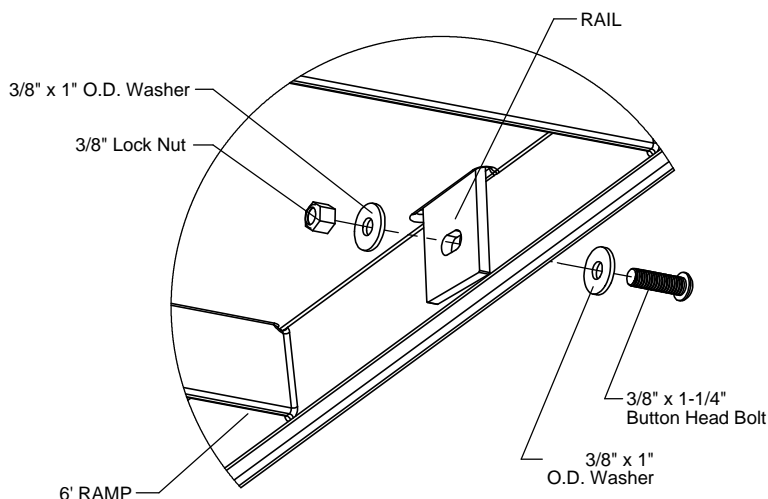
Attach Rails to Ramp as shown in Figure 1.4.  
 (See Notes A & D)

## Step 6

Fully tighten all fasteners according to the "TIGHTENING TORQUE FOR HARDWARE" section of the Installation Manual.

## Step 7

Place required protective surfacing under and around Ramp. (See Note C)



**Figure 1.4**

# 6' RAMP R5 INSTALLATION INSTRUCTIONS

**R5-1208-6FT**  
Page 4 of 4

## Specifications

### RAMP R5 6':

Shall be fabricated using 12 gauge sheet steel punched and formed with reinforcing cross members and gussets. Ramp shall be Play-Tuff™ coated after fabrication.

### RAIL SET R5 6':

Shall consist of a 1.660" O.D. 11 gauge top rail welded to 1/4" steel mounting clevises with 1.315" O.D. 12 gauge bottom rails, vertical rails and handrails. Handrails shall be attached to vertical rails with 1.029" O.D. 14 gauge handrail standoffs. The Rail Set shall have a multi-stage baked-on powder coat finish.

### WALL SET R5 6':

Shall consist of a 1.660" O.D. 11 gauge top rail welded to 1/4" steel mounting clevises with 1.315" O.D. 12 gauge bottom rails, vertical rails and handrails. Handrails shall be attached to vertical rails with 1.029" O.D. 14 gauge handrail standoffs. Vertical rungs shall be evenly spaced 1.029" O.D. 14 gauge steel tubing. The Wall Set shall have a multi-stage baked-on powder coat finish.

### MOUNTING BLOCKS:

Shall be two-part and precision die-cast from a high strength aluminum alloy. The Mounting Blocks have a multi-stage baked-on powder coat finish.

### HARDWARE:

Shall be stainless steel, zinc/nickel plated or galvanized as required to resist rust and corrosion.

## Parts List

Ramp w/ Rails - Ground to Deck		
Part #	DESCRIPTION	QTY.
CF-0290	Ramp 6' R5	1
FS-1208-RL6FT	Ramp Rail Set 6' R5	1
GF-7006-B	Mounting Block R5 Bottom	8
GF-7006-T	Mounting Block R5 Top	8
9103062-TR	Bolt Button Head 3/8" x 1-1/4"	12
9103112-TR	Bolt Button Head 3/8" x 2-1/2"	4
9143112-TR	Bolt Shoulder 3/8" x 2-1/2" BH	4
9281062-5-TR	Screw Soc HD CS 1/4" x 1-3/8" TR	4
9333002	Washer Flat 3/8" x 1" O.D. x .100" thick	28
9345002	Washer Flat SAE 1/2"	12
9413002	Nut Lock 3/8"	12
9443092-TR	Nut Barrel 3/8" x 2" BH	8

Ramp w/ Rails - Deck to Deck		
Part #	DESCRIPTION	QTY.
CF-0290	Ramp 6' R5	1
FS-1208-RL6FT	Ramp Rail Set 6' R5	1
GF-7006-B	Mounting Block R5 Bottom	8
GF-7006-T	Mounting Block R5 Top	8
9103062-TR	Bolt Button Head 3/8" x 1-1/4"	18
9103112-TR	Bolt Button Head 3/8" x 2-1/2"	4
9143112-TR	Bolt Shoulder 3/8" x 2-1/2" BH	4
9281062-5-TR	Screw Soc HD CS 1/4" x 1-3/8" TR	4
9333002	Washer Flat 3/8" x 1" O.D. x .100" thick	40
9345002	Washer Flat SAE 1/2"	12
9413002	Nut Lock 3/8"	18
9443092-TR	Nut Barrel 3/8" x 2" BH	8

Ramp w/ Walls - Ground to Deck		
Part #	DESCRIPTION	QTY.
CF-0290	Ramp 6' R5	1
FS-1208-RW6FT	Ramp Wall Set 6' R5	1
GF-7006-B	Mounting Block R5 Bottom	8
GF-7006-T	Mounting Block R5 Top	8
9103062-TR	Bolt Button Head 3/8" x 1-1/4"	12
9103112-TR	Bolt Button Head 3/8" x 2-1/2"	4
9143112-TR	Bolt Shoulder 3/8" x 2-1/2" BH	4
9281062-5-TR	Screw Soc HD CS 1/4" x 1-3/8" TR	4
9333002	Washer Flat 3/8" x 1" O.D. x .100" thick	28
9345002	Washer Flat SAE 1/2"	12
9413002	Nut Lock 3/8"	12
9443092-TR	Nut Barrel 3/8" x 2" BH	8

Ramp w/ Walls - Deck to Deck		
Part #	DESCRIPTION	QTY.
CF-0290	Ramp 6' R5	1
FS-1208-RW6FT	Ramp Wall Set 6' R5	1
GF-7006-B	Mounting Block R5 Bottom	8
GF-7006-T	Mounting Block R5 Top	8
9103062-TR	Bolt Button Head 3/8" x 1-1/4"	20
9103112-TR	Bolt Button Head 3/8" x 2-1/2"	4
9143112-TR	Bolt Shoulder 3/8" x 2-1/2" BH	4
9281062-5-TR	Screw Soc HD CS 1/4" x 1-3/8" TR	4
9333002	Washer Flat 3/8" x 1" O.D. x .100" thick	44
9345002	Washer Flat SAE 1/2"	12
9413002	Nut Lock 3/8"	20
9443092-TR	Nut Barrel 3/8" x 2" BH	8

## Maintenance

Periodically tighten all screws, bolts and nuts. A periodic inspection of all parts is necessary. If a part is broken or worn, replace immediately. For general maintenance please refer to our Playground Maintenance Manual.



Manufactured by Krauss Craft, Inc.  
www.playcraftsystems.com

For Customer Service Call  
800.333.8519 (U.S.A.) or  
541.955.9199 (International)

**Rev A**  
7/28/2011