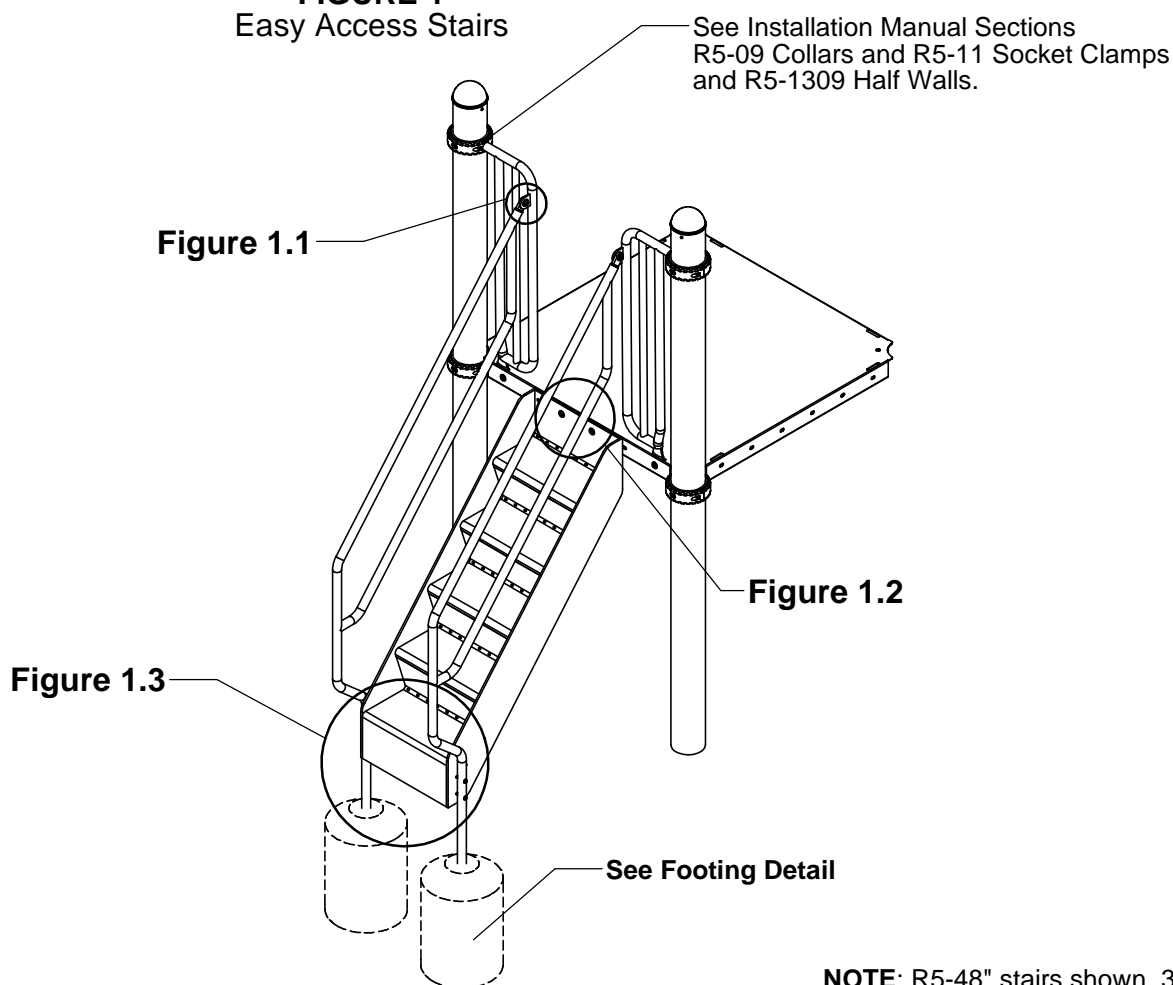


## IMPORTANT NOTES: Read First

- (A) Use liquid thread lock (such as Loctite®) with all threaded hardware. **Important:** Liquid thread lock (prior to curing) helps to eliminate the common problem of "thread seizure" in stainless steel hardware by serving as a lubricant during assembly.
- (B) Do not pour concrete until the equipment is completely assembled, leveled and plumbed. Concrete must be allowed to cure completely before using the equipment (at least 72 hours).
- (C) Refer to Installation Manual for R5-09 Collars, R5-11 Socket Clamps and R5-1309 Half Wall assembly instructions.
- (D) Use appropriate compliant protective surfacing and adjust footing depths accordingly. See free publication - The Handbook for Public Playground Safety, Publication #325 at [www.CPSC.gov](http://www.CPSC.gov) for the surfacing appropriate for the fall height of the equipment or consult your surfacing supply representative.

**FIGURE 1**  
Easy Access Stairs



**NOTE:** R5-48" stairs shown. 36" & 60" will vary slightly, but will not affect the assembly.

## Step 1

Refer to Footing Layout and mark footing hole locations. Dig (2) Ø 12" footing holes. Refer to Footing Detail for depth and details.

**IMPORTANT:** For areas with soft soil conditions, larger footings may be required.

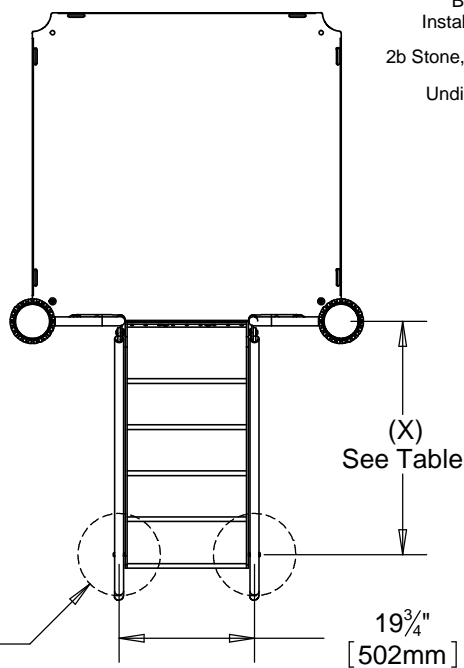
LOOSE FILL GROUND COVER:  
Impact attenuating (resilient) surfacing  
9" compacted or 12" uncompressed depth  
Compacted depth shown. (See Note D)

Optional Filter Fabric over  
Pea Gravel (for drainage)  
Concrete Footing  
Footing Anchor  
(welded 5/8" rod)  
Blocking, see  
Installers Manual  
2b Stone, Drain Rock  
Undisturbed Soil

**Footing Detail**

(Finish Grade)  
(Top of Soil)  
27" \*  
[686mm]

18"  
[457mm]



**Top View - Footing Layout**

\* Footing depth must be adjusted to compensate for the depth/thickness requirements of selected safety surfacing. See Section 06.1 of the Installation Manual

**Footing Distance Table**

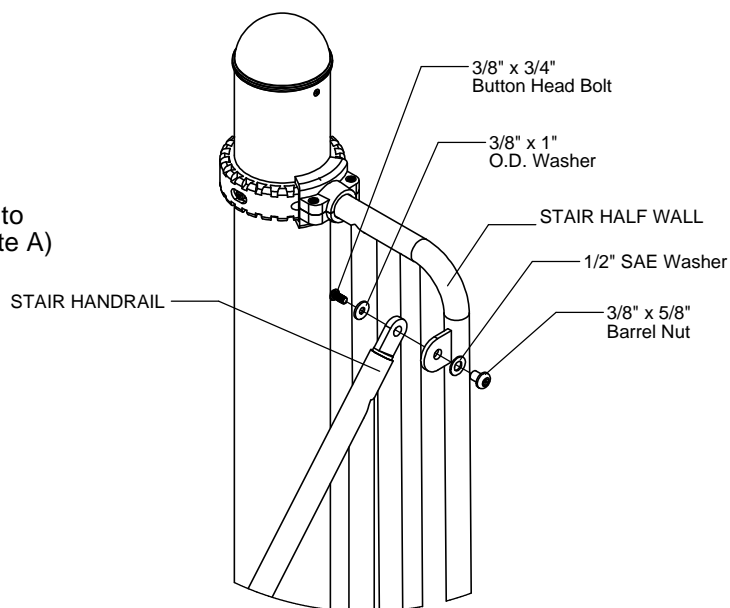
Part No.	Description	(X)
R5-1201-3	36" Easy Access Stairs	44"
R5-1201-4	48" Easy Access Stairs	34"
R5-1201-5	60" Easy Access Stairs	46-1/4"

## Step 2

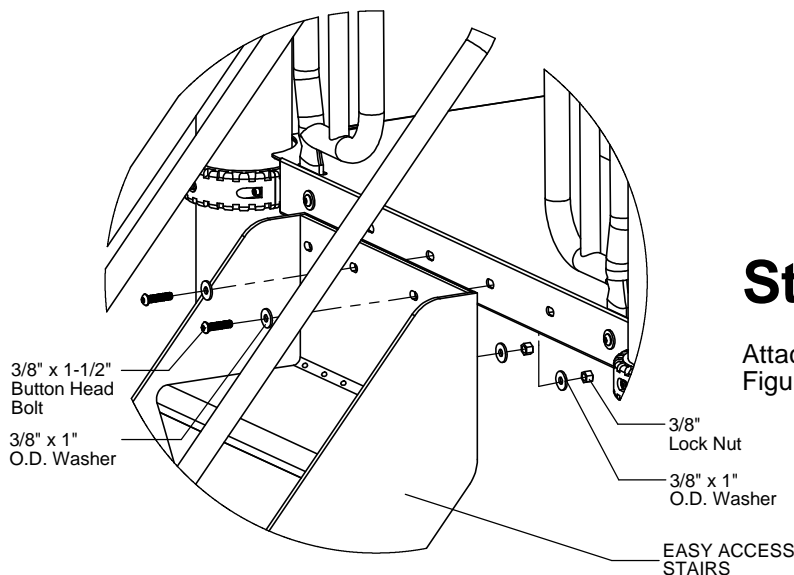
Attach R5 Stair Half Walls to posts and deck.  
(See Note C)

## Step 3

Place Stair Handrails in footing holes and attach to Stair Half Walls as shown in Figure 1.1. (See Note A)



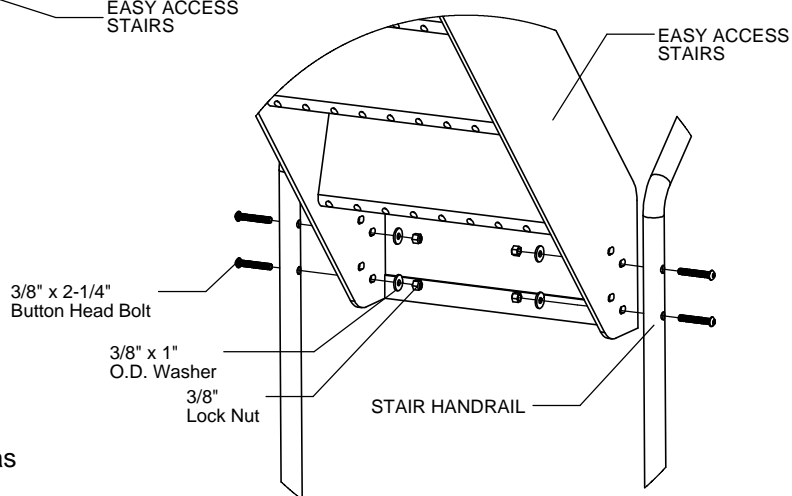
**Figure 1.1**



**Figure 1.2**

## Step 4

Attach Easy Access Stairs to deck as shown in Figure 1.2. (See Note A)



**Figure 1.3**

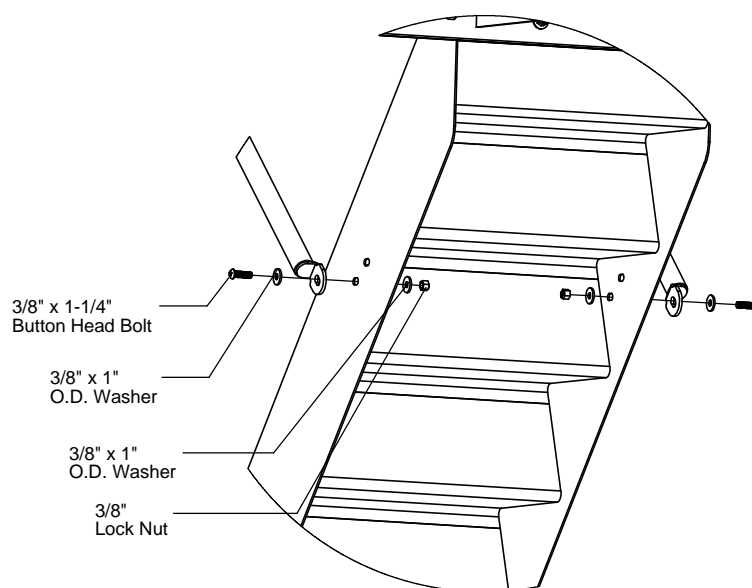
## Step 5

Attach Stair Handrails to Easy Access Stairs as shown in Figure 1.3. (See Note A)

## Step 6

**NOTE: For 60" Stairs Only.**

Attach Stair Handrails to Easy Access Stairs as shown in Figure 2  
(See Note A)



**Figure 2**

## Step 7

Fully tighten all fasteners according to the "TIGHTENING TORQUE FOR HARDWARE" section of the Installation Manual.

## Step 8

Plumb and level entire component. Pour concrete into footing hole. Allow at least 72 hours to cure before using this equipment. (See Note B)

## Step 9

Place appropriate compliant protective surfacing under and around Easy Access Stairs. (See Note D)

## Specifications

### EASY ACCESS STAIRS:

Shall be fabricated using 12 gauge punched steel with reinforcing cross members and gussets. All surfaces to be Play-Tuff™ coated.

### EASY ACCESS STAIR HANDRAILS:

Shall be fabricated using 1.315" O.D. 12 gauge steel tubing and welded to tabs for mounting to Stair Rail Bracket and Easy Access Stairs. Easy Access Stair Handrails shall have a multi-stage baked-on powder coat finish.

### STAIR HALF WALLS:

Shall be fabricated using 1.315" O.D. 12 gauge steel tubing outer rails and 1.029" O.D. 14 gauge steel tubing welded vertically and a stair rail tab welded on the outer rail. Stair Half Walls shall have a multi-stage baked-on powder coat finish.

### HARDWARE:

Shall be stainless steel, zinc/nickel plated or galvanized as required to resist rust and corrosion.

## Parts List

### R5-1201-3 - 36" Easy Access Stairs

Part #	DESCRIPTION	QTY.
CE-4004	Stair 36-18	1
FS-1203-3A	Stair 36-18 H. Rail	2
9103032-TR	Bolt Button Head 3/8" x 3/4"	2
9103072-TR	Bolt Button Head 3/8" x 1-1/2"	2
9103102-TR	Bolt Button Head 3/8" x 2-1/4"	4
9333002	Washer Flat 3/8" x 1" O.D. x .100" thick	10
9345002	Washer Flat SAE 1/2"	2
9413002	Nut Lock 3/8"	6
9443022-TR	Nut Barrel 3/8" x 5/8" BH	2

### R5-1201-4 - 48" Easy Access Stairs

Part #	DESCRIPTION	QTY.
CE-4575	Stair 48-18	1
FS-1201-4A	Stair 48-18 H. Rail	2
9103032-TR	Bolt Button Head 3/8" x 3/4"	2
9103072-TR	Bolt Button Head 3/8" x 1-1/2"	2
9103102-TR	Bolt Button Head 3/8" x 2-1/4"	4
9333002	Washer Flat 3/8" x 1" O.D. x .100" thick	10
9345002	Washer Flat SAE 1/2"	2
9413002	Nut Lock 3/8"	6
9443022-TR	Nut Barrel 3/8" x 5/8" BH	2

### R5-1201-5 - 60" Easy Access Stairs

Part #	DESCRIPTION	QTY.
CE-4574	Stair 60-18	1
FS-1201-5A	Stair 60-18 H. Rail	2
9103032-TR	Bolt Button Head 3/8" x 3/4"	2
9103062-TR	Bolt Button Head 3/8" x 1-1/4"	2
9103072-TR	Bolt Button Head 3/8" x 1-1/2"	2
9103102-TR	Bolt Button Head 3/8" x 2-1/4"	4
9333002	Washer Flat 3/8" x 1" O.D. x .100" thick	14
9345002	Washer Flat SAE 1/2"	2
9413002	Nut Lock 3/8"	8
9443022-TR	Nut Barrel 3/8" x 5/8" BH	2

## Maintenance

Periodically tighten all screws, bolts and nuts. A periodic inspection of all parts is necessary. If a part is broken or worn, replace immediately. For general maintenance please refer to our Playground Maintenance Manual.



Manufactured by Krauss Craft, Inc.  
www.playcraftsystems.com

For Customer Service Call  
800.333.8519 (U.S.A.) or  
541.955.9199 (International)

Rev G  
9/30/2009