

IMPORTANT NOTES: Read First

(A) Use liquid thread lock (such as Loctite®) with all threaded hardware. **Important:** Liquid thread lock (prior to curing) helps to eliminate the common problem of "thread seizure" in stainless steel hardware by serving as a lubricant during assembly.

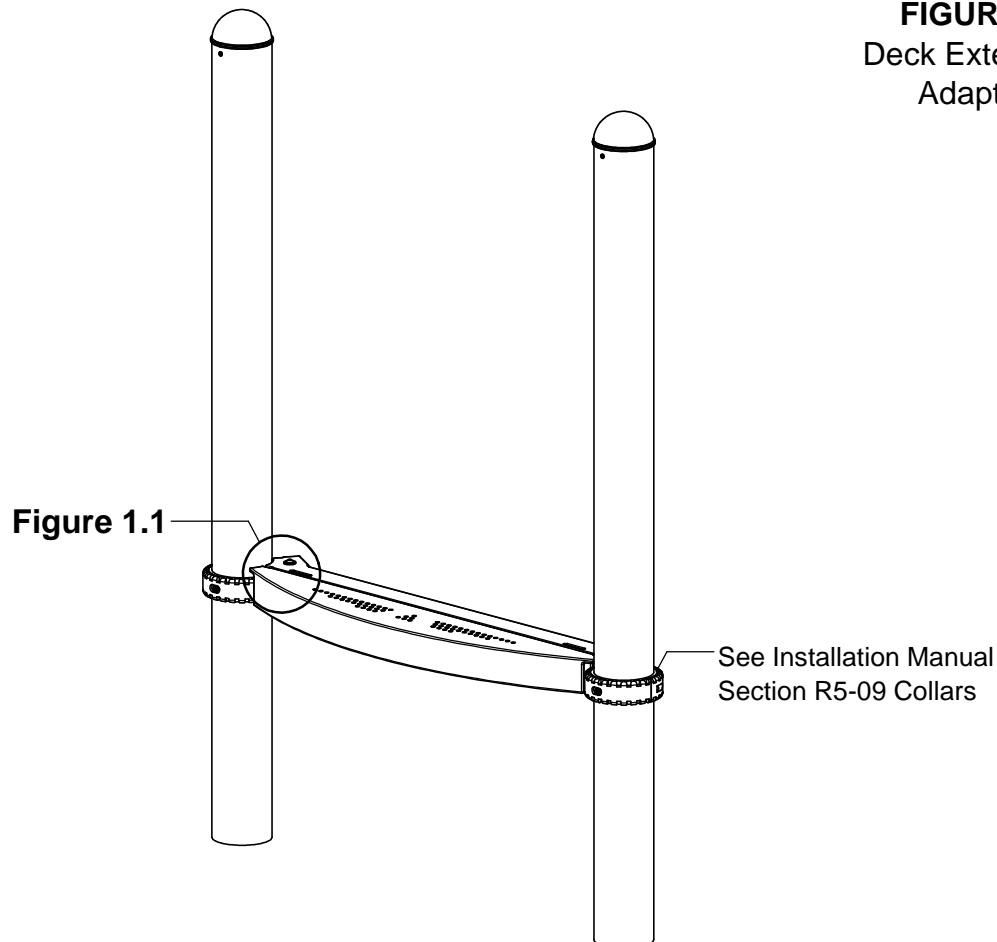
(B) Refer to Installation Manual for R5-09 Collars installation instructions.

(C) All deck heights on your system's top view drawing are measured from the top of safety surface (finished grade). Post location dimensions are on centers.

(D) Collars are to be located 7/8" below the top of the deck (to the top of the collar).

(E) An appropriate energy absorbing safety surface is required under and around all playground equipment. Loose fill protective surfacing is shown only as an example for the purpose of this assembly instruction. Other surfacing material may vary in thickness and/or compression depths. See free publication - The Handbook for Public Playground Safety, Publication #325 at www.cpsc.gov for the surfacing appropriate for the fall height of the equipment or consult your surfacing supply representative.

FIGURE 1
Deck Extension
Adapter



NOTE: R5 Curved Extension and Extension Adapter shown. Other configurations will vary slightly, but does not affect assembly.

Step 1

For Adapter Only

Locate and attach Deck Spanner to Post Collars as shown in Figure 1.1. (See Notes A, B, C & D)

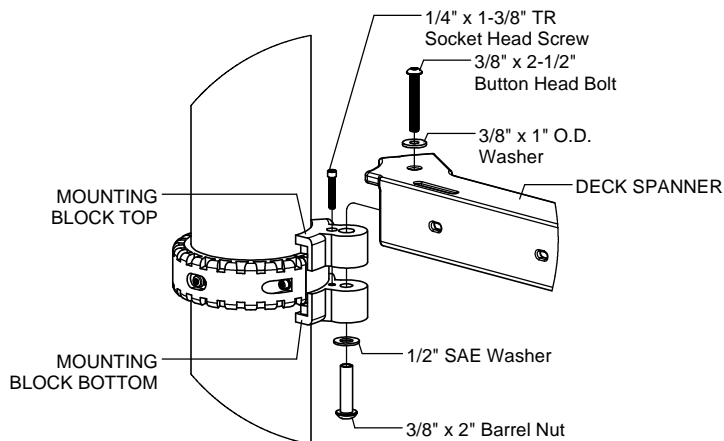


Figure 1.1

Step 2

For Extension Only

Attach Extension to Deck as shown in Figure 2. (See Note A)

Step 3

Fully tighten all fasteners according to the "TIGHTENING TORQUE FOR HARDWARE" section of the Installation Manual.

Step 4

Place required protective surfacing under and around Deck Extension. (See Note E)

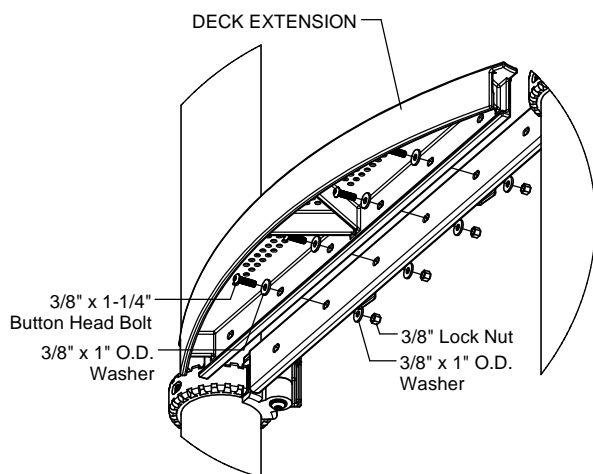


FIGURE 2

R5 DECK EXTENSION & ADAPTER INSTALLATION INSTRUCTIONS

R5-1108
Page 3 of 3

Parts List

S-1108-ADP		
Part #	DESCRIPTION	QTY.
CF-0714	Deck Spanner R5	1
GF-7006-B	Mounting Block R5 Bottom	2
GF-7006-T	Mounting Block R5 Top	2
9103112-TR	Bolt Button Head 3/8" x 2-1/2"	2
9281062-5-TR	Screw Soc HD CS 1/4" x 1-3/8" TR	2
9333002	Washer Flat 3/8" x 1" O.D. x .100" thick	2
9345002	Washer Flat SAE 1/2"	2
9443092-TR	Nut Barrel 3/8" x 2" BH	2

S-1108-ANG		
Part #	DESCRIPTION	QTY.
CF-0739	Deck Angle Extension R5	1
9103062-TR	Bolt Button Head 3/8" x 1-1/4"	4
9103072-TR	Bolt Button Head 3/8" x 1-1/2"	2
9333002	Washer Flat 3/8" x 1" O.D. x .100" thick	12
9413002	Nut Lock 3/8"	6

S-1108-R		
Part #	DESCRIPTION	QTY.
CF-0713	Deck Curved Extension R5	1
9103062-TR	Bolt Button Head 3/8" x 1-1/4"	4
9103072-TR	Bolt Button Head 3/8" x 1-1/2"	2
9333002	Washer Flat 3/8" x 1" O.D. x .100" thick	12
9413002	Nut Lock 3/8"	6

Specifications

DECK SPANNER & EXTENSIONS:

Shall be made from punched, formed, and welded 12 gauge sheet steel. The Deck Spanner and Extensions shall be Play-Tuff™ coated after fabrication.

MOUNTING BLOCKS:

Shall be two-part and precision die-cast from a high strength aluminum alloy. The Mounting Blocks have a multi-stage baked-on powder coat finish.

HARDWARE:

Shall be stainless steel, zinc/nickel plated or galvanized as required to resist rust and corrosion.

Maintenance

Periodically tighten all screws, bolts and nuts. A periodic inspection of all parts is necessary. If a part is broken or worn, replace immediately. For general maintenance please refer to our Playground Maintenance Manual.



Manufactured by Krauss Craft, Inc.
www.playcraftsystems.com

For Customer Service Call
800.333.8519 (U.S.A.) or
541.955.9199 (International)

Rev A
4/12/2017