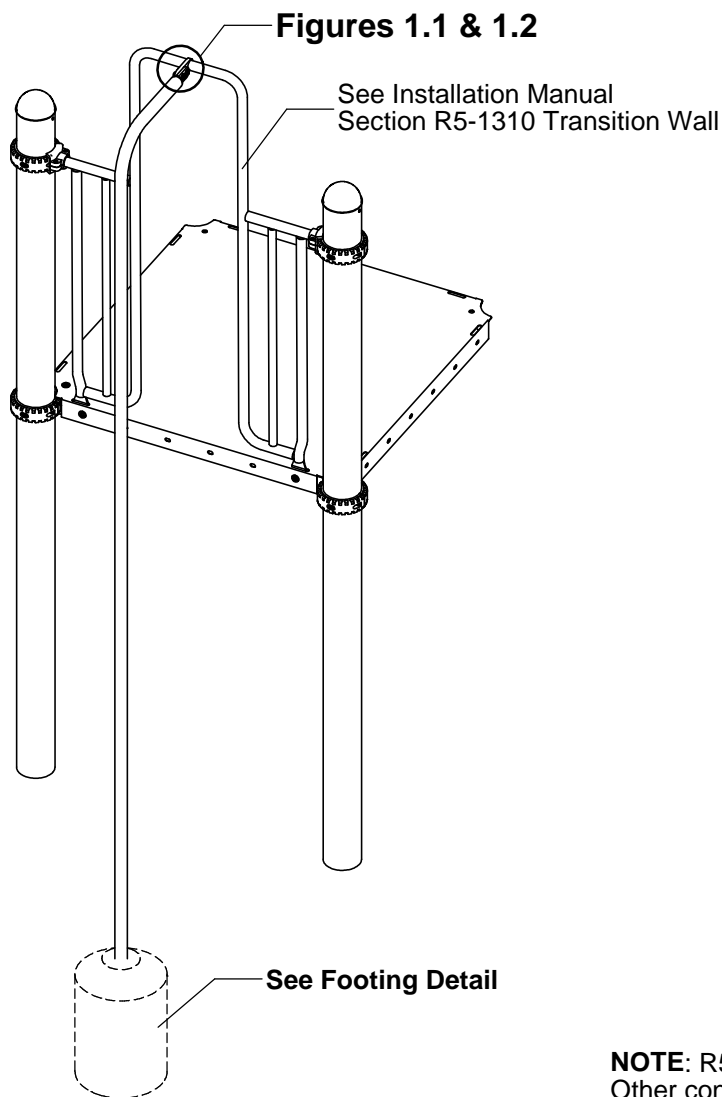


IMPORTANT NOTES: Read First

- (A) Use liquid thread lock (such as Loctite®) with all threaded hardware. **Important:** Liquid thread lock (prior to curing) helps to eliminate the common problem of "thread seizure" in stainless steel hardware by serving as a lubricant during assembly.
- (B) Do not pour concrete until the equipment is completely assembled, leveled and plumbed. Concrete must be allowed to cure completely before using the equipment (at least 72 hours).
- (C) Refer to Installation Manual for R5-1310 Transition Wall assembly instructions.
- (D) Use appropriate compliant protective surfacing and adjust footing depths accordingly. See free publication - The Handbook for Public Playground Safety, Publication #325 at www.CPSC.gov for the surfacing appropriate for the fall height of the equipment or consult your surfacing supply representative.
- (E) The distance from the structure to the pole shall be no less than 18" [460 mm] and no greater than 20" [508 mm].

FIGURE 1
Firepole Assembly



NOTE: R5 5' deck height shown.
Other configurations will vary slightly
but does not affect assembly.

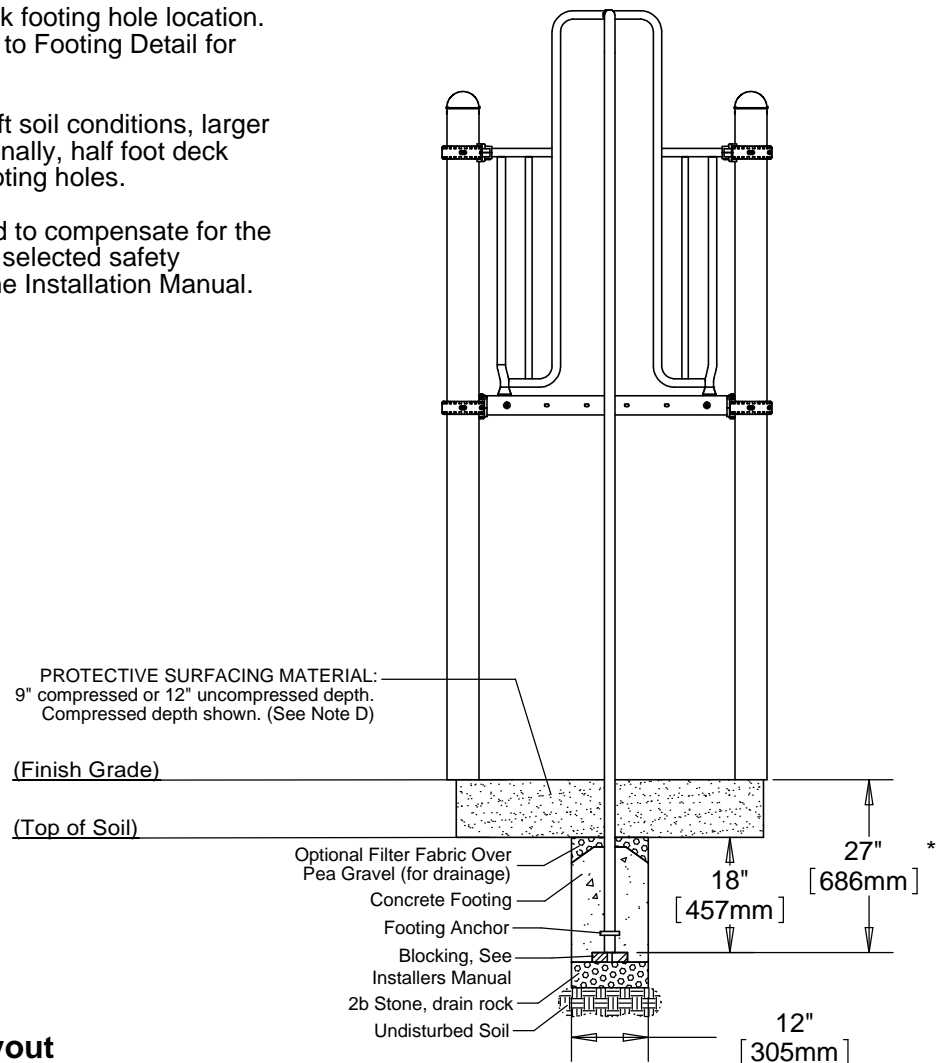
Step 1

Refer to Footing Layout and mark footing hole location. Dig (1) Ø 12" footing hole. Refer to Footing Detail for depth and details.

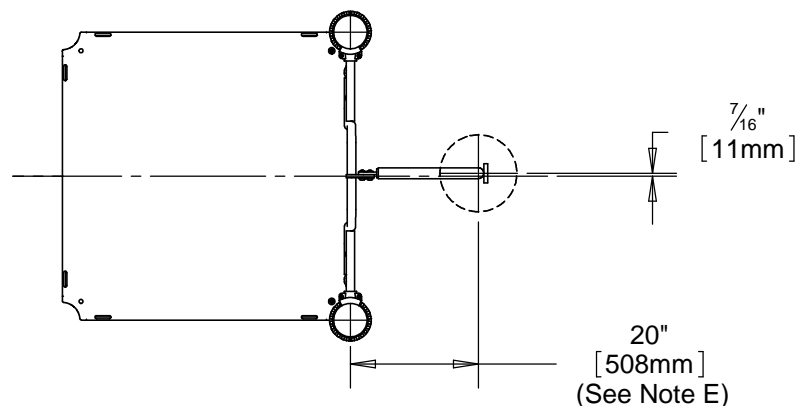
IMPORTANT: For areas with soft soil conditions, larger footing may be required. Additionally, half foot deck heights will require 6" deeper footing holes.

* Footing depth must be adjusted to compensate for the depth/thickness requirements of selected safety surfacing. See Section 06.1 of the Installation Manual.

Footing Detail



Top View - Footing Layout



Step 2

Attach Transition Wall to the deck. (See Note C)

Step 3a

Place Firepole into footing hole and attach to Transition Wall as shown in Figure 1.1. (See Note A)

Step 3b

FOR CANADA FIREPOLE ONLY

Place Firepole into footing hole and attach to Transition Wall as shown in Figure 1.2. (See Note A)

NOTE: There shall be no gap between Firepole Tab Blocker and Transition Wall.

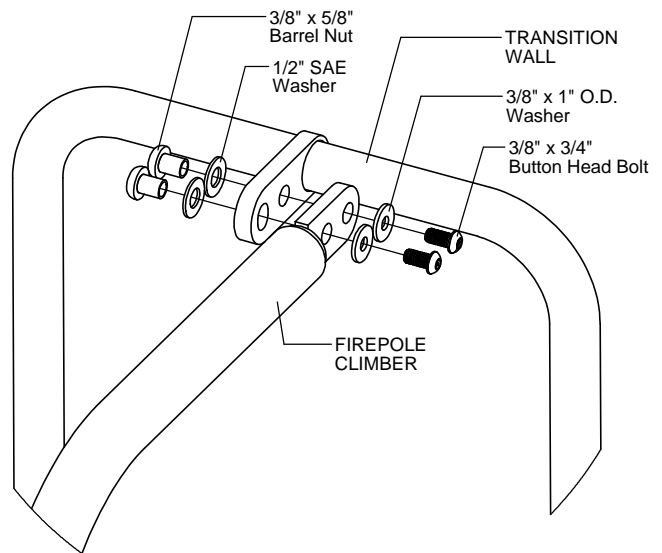


Figure 1.1

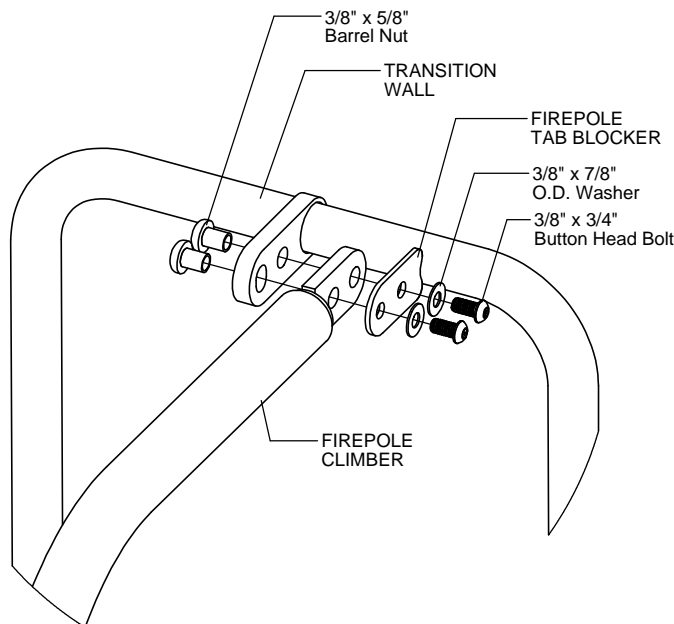


Figure 1.2

Step 4

Fully tighten all fasteners according to the "TIGHTENING TORQUE FOR HARDWARE" section of the Installation Manual.

Step 5

Plumb and level entire component. Pour concrete into footing hole. Allow at least 72 hours to cure before using this equipment. (See Notes B & E)

Step 6

Place appropriate compliant protective surfacing under and around Firepole. (See Note D)

Specifications

FIREPOLE:

Shall be fabricated of 1.660" O.D. 11 gauge steel tubing with a .375" steel tab welded onto the end. The Firepole has a multi-stage baked-on powder coat finish.

FIREPOLE TAB BLOCKER:

Shall be fabricated from 12 gauge sheet steel. The Firepole Tab Blocker has a multi-stage baked-on powder coat finish.

HARDWARE:

Shall be stainless steel, zinc/nickel plated or galvanized as required to resist rust and corrosion.

Parts List

S-1213-R5		
Part #	DESCRIPTION	QTY
FS-1213-R5	Firepole Climber R5	1
9103032-TR	Bolt Button Head 3/8" x 3/4"	2
9333002	Washer Flat 3/8" x 1" O.D. x .100" thick	2
9345002	Washer Flat SAE 1/2"	2
9443022-TR	Nut Barrel 3/8" x 5/8" BH	2

S-1213-R5CAN		
Part #	DESCRIPTION	QTY
AE-0051	Firepole Tab Blocker	1
FS-1213-R5	Firepole Climber R5	1
9103032-TR	Bolt Button Head 3/8" x 3/4"	2
9333042	Washer Flat 3/8" x 7/8" O.D.	2
9443022-TR	Nut Barrel 3/8" x 5/8" BH	2

Maintenance

Periodically tighten all screws, bolts and nuts. A periodic inspection of all parts is necessary. If a part is broken or worn, replace immediately. For general maintenance please refer to our Playground Maintenance Manual.



Manufactured by Krauss Craft, Inc.
www.playcraftsystems.com

For Customer Service Call
800.333.8519 (U.S.A.) or
541.955.9199 (International)

Rev G
12/8/2010