

## IMPORTANT NOTES: Read First

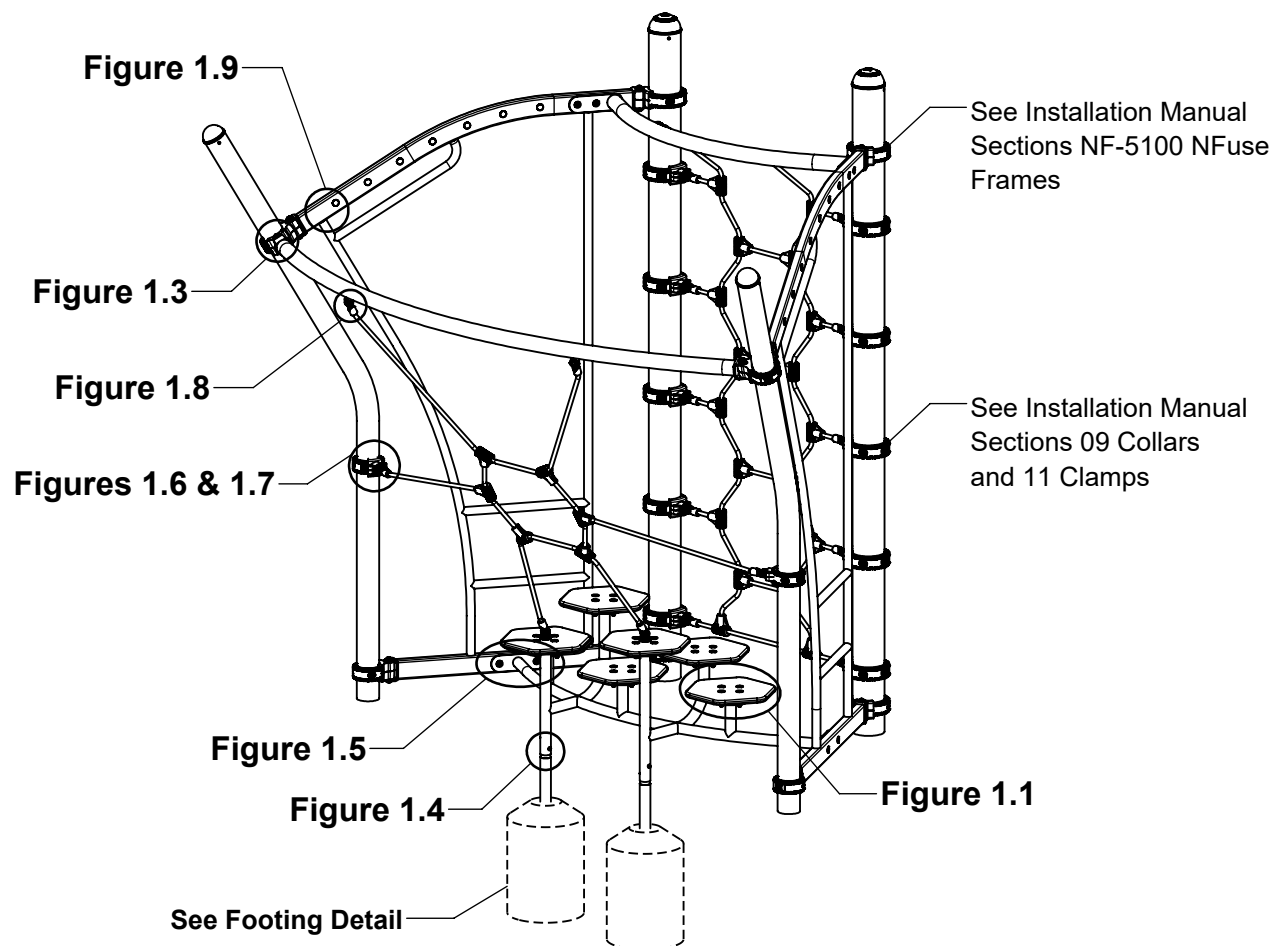
(A) Use liquid thread lock (such as Loctite®) with all threaded hardware. **Important:** Liquid thread lock (prior to curing) helps to eliminate the common problem of "thread seizure" in stainless steel hardware by serving as a lubricant during assembly.

(B) Do not pour concrete until the equipment is completely assembled, leveled and plumbed. Concrete must be allowed to cure completely before using the equipment (at least 72 hours).

(C) Refer to Installation Manual for 09 Collars and 11 Socket Clamps installation instructions.

(D) An appropriate energy absorbing safety surface is required under and around all playground equipment. Loose fill protective surfacing is shown only as an example for the purpose of this assembly instruction. Other surfacing material may vary in thickness and/or compression depths. See free publication - The Handbook for Public Playground Safety, Publication #325 at [www.cpsc.gov](http://www.cpsc.gov) for the surfacing appropriate for the fall height of the equipment or consult your surfacing supply representative.

**FIGURE 1**  
**NFuse Balance Step Bay**



## Step 1

Locate and attach collars at heights shown in Elevation View. (See Note B)

Refer to Footing Layout and mark footing hole locations. Dig 2 Ø12" footing holes. Refer to Footing Detail for depth and details.

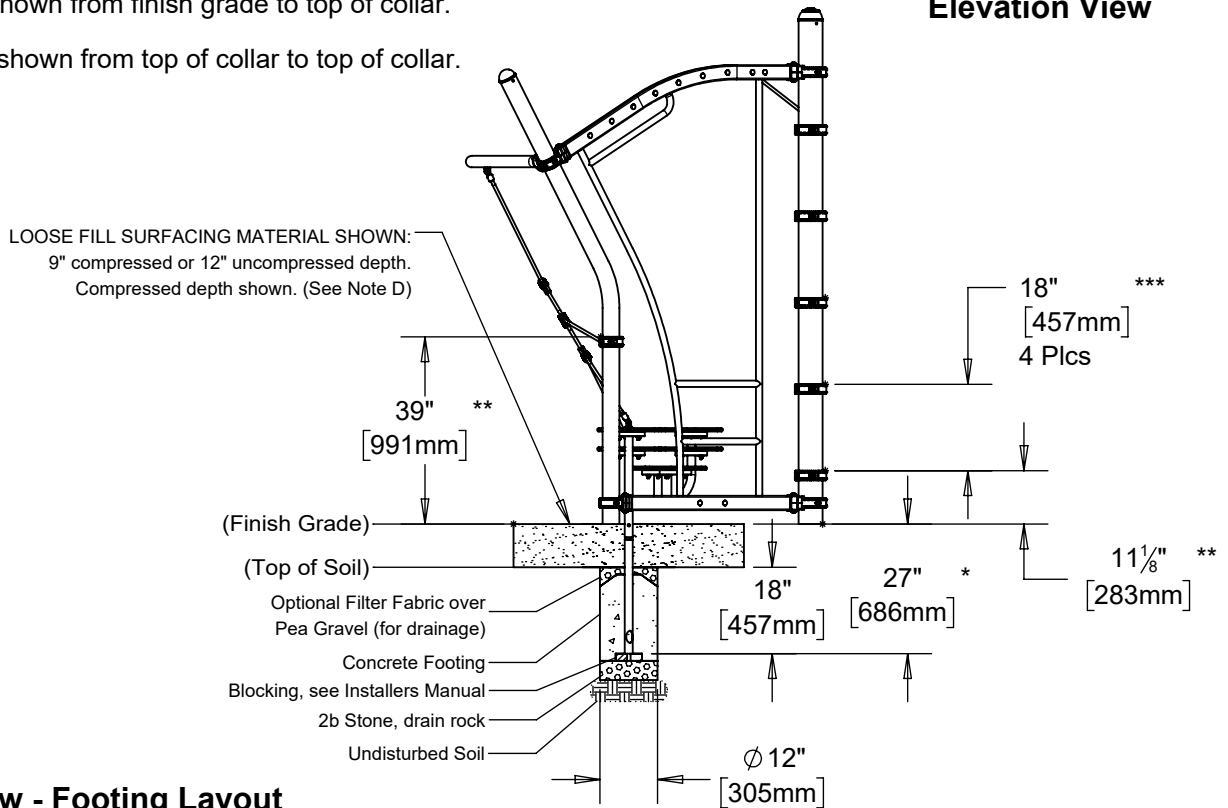
**IMPORTANT:** For areas with soft soil conditions, larger footings may be required.

\* Footing depth must be adjusted to compensate for the depth/thickness requirements of selected safety surfacing. See Section 06.1 of the Installation Manual.

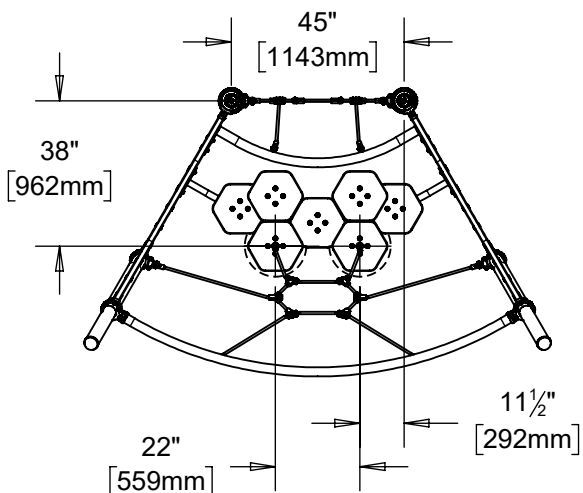
\*\* Height shown from finish grade to top of collar.

\*\*\* Height shown from top of collar to top of collar.

**Elevation View**



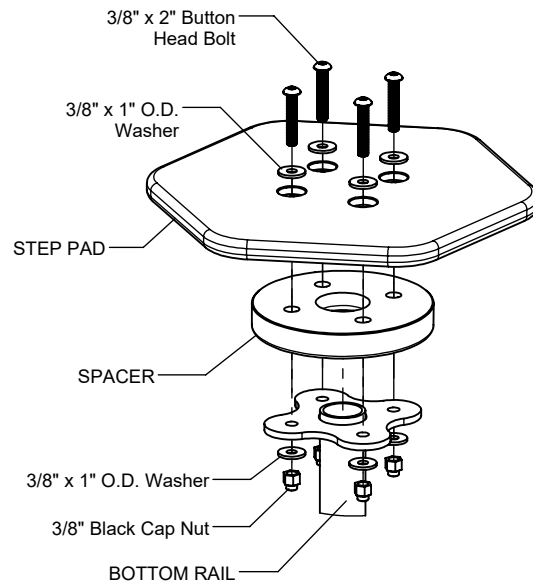
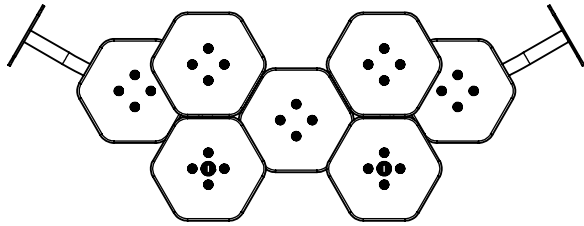
**Top View - Footing Layout**



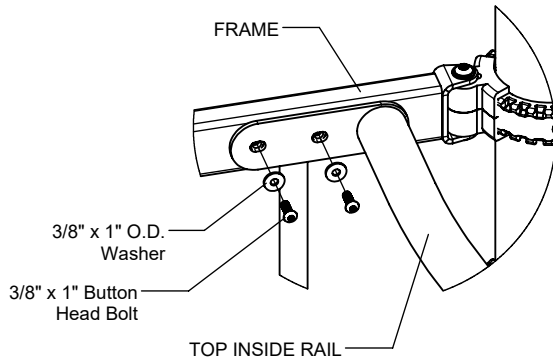
## Step 2 (Factory Assembled)

Attach Step Pad to Bottom Rail as shown in Figure 1.1. (See Note A)

**NOTE:** View below shows proper orientation of step pads as assembled.



**Figure 1.1**



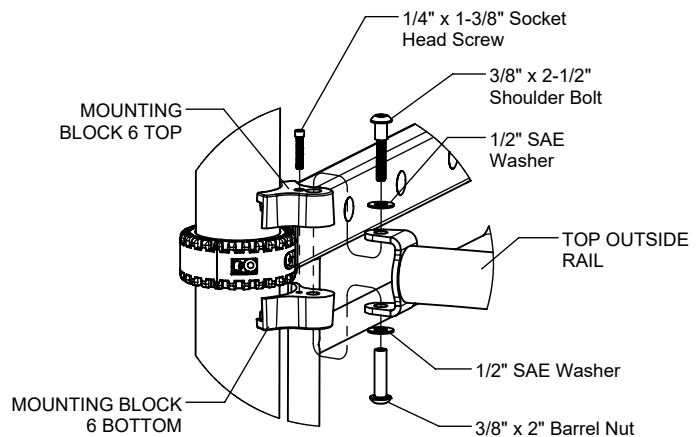
**Figure 1.2**

## Step 3

Attach Top Inside Rail to Frame as shown in Figure 1.2. (See Note A)

## Step 4

Attach Top Outside Rail to Post as shown in Figure 1.3. (See Note A)

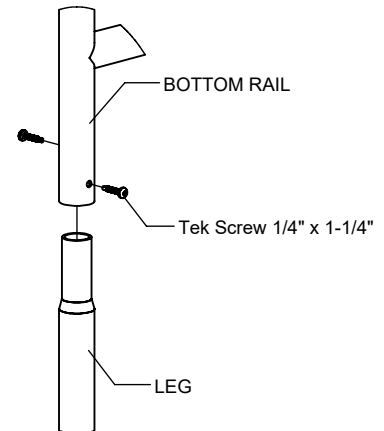


**Figure 1.3**

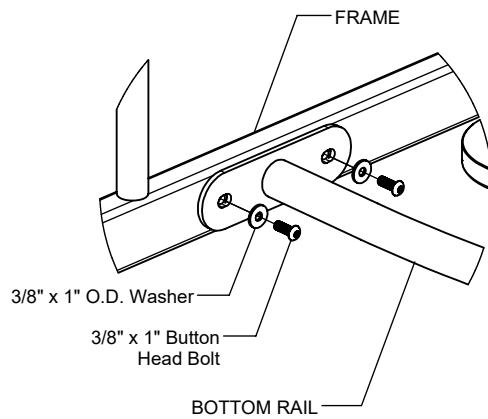
## Step 5

### For In-Ground Version Only

Attach NFuse Step Bay Bottom Rail to In-Ground Leg as shown in Figure 1.4. (See Note A)



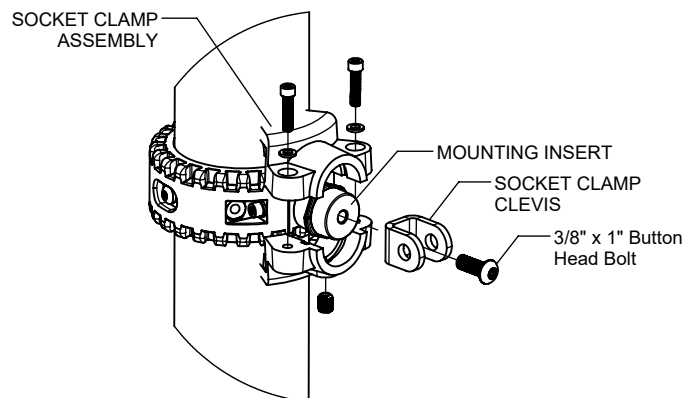
**Figure 1.4**



**Figure 1.5**

## Step 6

Attach NFuse Step Bay Bottom Rail to Frame as shown in Figure 1.5. (See Note A)



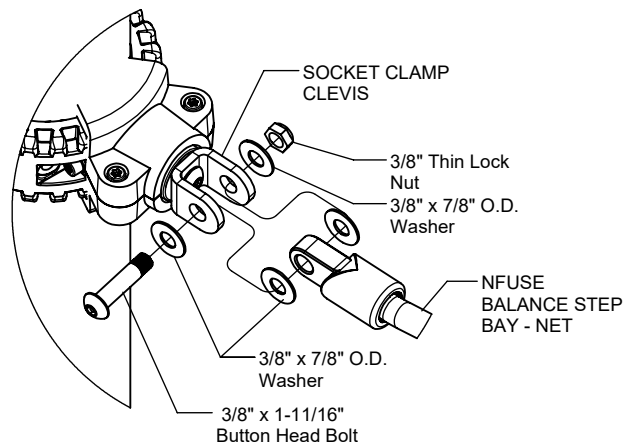
**Figure 1.6**

## Step 7

Attach Socket Clamp Clevis to Collar as shown in Figure 1.6. (See Notes A & C)

## Step 8

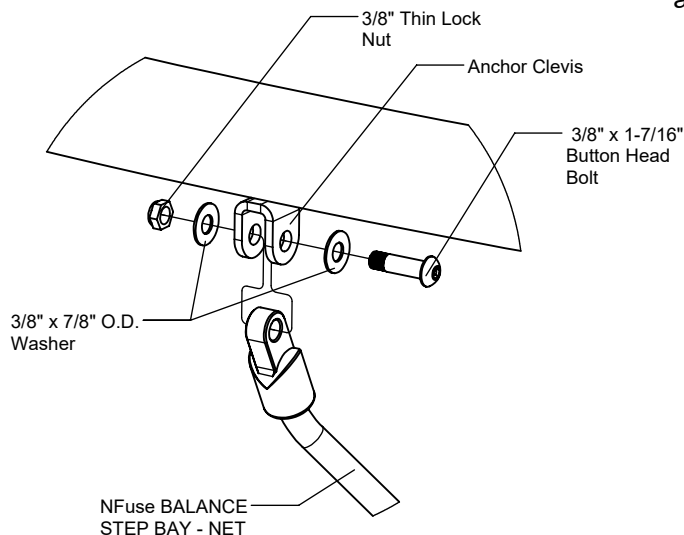
Attach NFuse Balance Step Bay Net to Socket Clamp Clevis as shown in Figure 1.7. (See Note A)



**Figure 1.7**

## Step 9

Attach NFuse Balance Step Bay Net to Anchor Clevis as shown in Figure 1.8. (See Note A)



**Figure 1.8**

## Step 10

Install Plugs into all Nutserts that are not in use on upper and lower frame tube, both sides as shown in Figure 1.9.

## Step 11

Attach remaining net connections to corresponding clevises as shown in Figure 1.8. (See Note A)

## Step 12

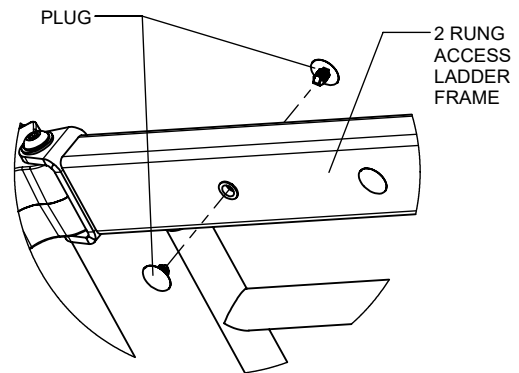
Fully tighten all fasteners according to the "TIGHTENING TORQUE FOR HARDWARE" section of the Installation Manual.

## Step 13

Plumb and level entire component. Pour concrete into footing holes. Allow at least 72 hours to cure before using this equipment. (See Note B)

## Step 14

Place required protective surfacing under and around NFuse Balance Step Bay. (See Note D)



**Figure 1.9**

# NFUSE BALANCE STEP BAY INSTALLATION INSTRUCTIONS

**5202**  
Page 7 of 8

## Parts List

S-5202 IN-GROUND LINK		
PART #	DESCRIPTION	QTY
BE-1105	Socket Clamp Rope Clevis	12
FS-5202-T	NFuse Balance Step Bay - Top Outside Rail	1
FS-5202-TI	Balance Step Bay - Top Inside Rail	1
GE-7015	Mounting Insert	12
GG-8125	Mounting Block 6 Top R3.5	2
GG-8127	Mounting Block 6 Bottom R3.5	2
HM-0001-IN	NFuse Hex Net Bay - Inner Net	1
HS-1001-R5	Socket Clamp Set R5	10
HS-1001-R35	Socket Clamp Set R3.5	2
LM-0003	NFuse Balance Step Bay - Leg Tube	2
HM-0003	NFuse Balance Step Bay - Net	1
9103052-TR	Bolt Button Head 3/8" x 1"	20
9103200-TR	Bolt Button Head 3/8" x 1-7/16"	6
9103210-TR	Bolt Button Head 3/8" x 1-11/16"	12
9143112-TR	Bolt Shoulder 3/8" x 2-1/2" BH	2
9271062-TR	1/4" x 1-1/4" Tek Screw	4
9281062-5-TR	Screw Soc HD 1/4" x 1-3/8"	2
9333002	Washer Flat 3/8" x 1" O.D. x .100" thick	8
9333042	Washer Flat 3/8" x 7/8" O.D.	60
9345002	Washer Flat SAE 1/2"	4
9423002	Nut Lock Thin 3/8"	18
9443092-TR	Nut Barrel 3/8" x 2" BH	2

S-5202 SURFACE MOUNT LINK		
PART #	DESCRIPTION	QTY
BE-1105	Socket Clamp Rope Clevis	12
FS-5202-T	NFuse Balance Step Bay - Top Outside Rail	1
FS-5202-TI	Balance Step Bay - Top Inside Rail	1
GE-7015	Mounting Insert	12
GG-8125	Mounting Block 6 Top R3.5	2
GG-8127	Mounting Block 6 Bottom R3.5	2
HM-0001-IN	NFuse Hex Net Bay - Inner Net	1
HS-1001-R5	Socket Clamp Set R5	10
HS-1001-R35	Socket Clamp Set R3.5	2
HM-0003	NFuse Balance Step Bay - Net	1
9103052-TR	Bolt Button Head 3/8" x 1"	20
9103200-TR	Bolt Button Head 3/8" x 1-7/16"	6
9103210-TR	Bolt Button Head 3/8" x 1-11/16"	12
9143112-TR	Bolt Shoulder 3/8" x 2-1/2" BH	2
9281062-5-TR	Screw Soc HD 1/4" x 1-3/8"	2
9333002	Washer Flat 3/8" x 1" O.D. x .100" thick	8
9333042	Washer Flat 3/8" x 7/8" O.D.	60
9345002	Washer Flat SAE 1/2"	4
9423002	Nut Lock Thin 3/8"	18
9443092-TR	Nut Barrel 3/8" x 2" BH	2

## Assembled Parts List

S-5202 IN-GROUND LINK		
PART #	DESCRIPTION	QTY
EM-0001-NSP	NFuse Balance Step Bay - Net Step Pad	2
EM-0001-S	NFuse Balance Step Bay - Spacer	7
EM-0001-SP	NFuse Balance Step Bay - Step Pad	5
FS-5202-B	NFuse Balance Step Bay - Bottom Rail	1
9103092-TR	Bolt Button Head 3/8" x 2"	28
9333002	Washer Flat 3/8" x 1" O.D. x .100" thick	56
9413162-BLK	Nut Lock 3/8" w/ Black Cap	28

S-5202 SURFACE MOUNT LINK		
PART #	DESCRIPTION	QTY
EM-0001-NSP	NFuse Balance Step Bay - Net Step Pad	2
EM-0001-S	NFuse Balance Step Bay - Spacer	7
EM-0001-SP	NFuse Balance Step Bay - Step Pad	5
FS-5202-B-SM	NFuse Balance Step Bay - Bottom Rail - Surface Mount	1
9103092-TR	Bolt Button Head 3/8" x 2"	28
9333002	Washer Flat 3/8" x 1" O.D. x .100" thick	56
9413162-BLK	Nut Lock 3/8" w/ Black Cap	28

## Maintenance

Periodically tighten all screws, bolts and nuts. A periodic inspection of all parts is necessary. If a part is broken or worn, replace immediately. For general maintenance please refer to our Playground Maintenance Manual.

## Specifications

### **SOCKET CLAMP ROPE CLEVIS:**

Shall be precision cut and formed using 3/16" stainless steel.

### **NFUSE BALANCE STEP BAY - INNER & OUTER RAIL:**

Shall be fabricated using 2.375" O.D. 10 gauge steel tubing with welded 1/4" thick steel plates and 3/16" thick steel clevises and will have a multi-stage baked-on powder coat finish.

### **NFUSE BALANCE STEP BAY - BOTTOM RAIL**

Shall be fabricated using 1.660" O.D. steel tubing with welded 1/4" thick steel plates and plugs and 3/16" thick stainless steel clevises. The NFuse Balance Step Bay - Bottom Rail shall have a multi-stage baked-on powder coat finish.

### **NFUSE BALANCE STEP BAY - NETS:**

Shall be made from 16mm steel-reinforced rope with high-strength copolymer plastic intersection connectors and machined aluminum ferrules.

### **NFUSE BALANCE STEP BAY - STEP PADS:**

Shall be made from high density 3/4" sheet plastic specially formulated for optimum UV stability and color retention.

### **NFUSE BALANCE STEP BAY - SPACER:**

Shall be made from high density 1" sheet plastic specially formulated for optimum UV stability and color retention.

### **IN-GROUND LEG:**

Shall be fabricated using 1.660" O.D. steel tubing. The In-Ground Leg shall have a multi-stage baked-on powder coat finish.

### **MOUNTING INSERTS:**

Shall be precision die-cast from a high-strength aluminum alloy.

### **MOUNTING BLOCKS & SOCKET CLAMPS:**

Shall be two-part and precision die-cast from a high strength aluminum alloy and will have a multi-stage baked-on powder coat finish.

### **HARDWARE:**

Shall be stainless steel, zinc/nickel plated or galvanized as required to resist rust and corrosion.

## Maintenance

Periodically tighten all screws, bolts and nuts. A periodic inspection of all parts is necessary. If a part is broken or worn, replace immediately. For general maintenance please refer to our Playground Maintenance Manual.