

IMPORTANT NOTES: Read First

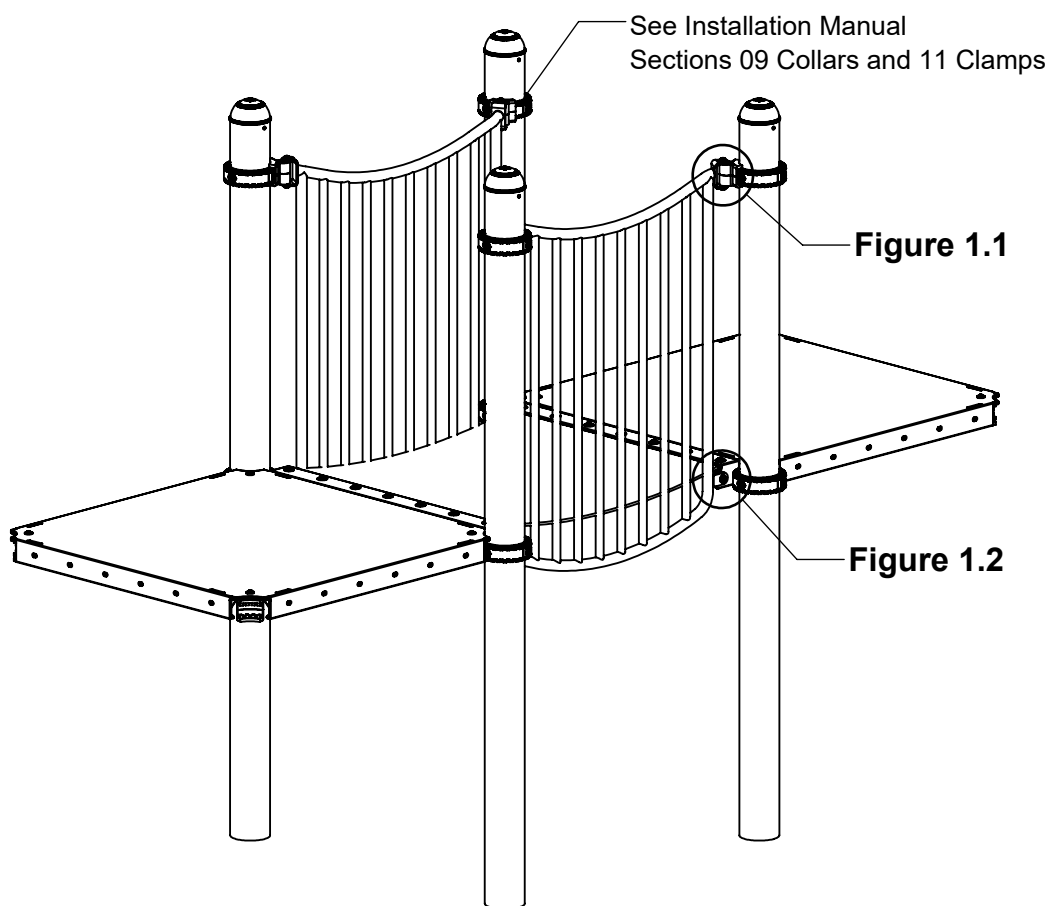
(A) Use liquid thread lock (such as Loctite®) with all threaded hardware. **Important:** Liquid thread lock (prior to curing) helps to eliminate the common problem of "thread seizure" in stainless steel hardware by serving as a lubricant during assembly.

(B) Do not pour concrete until the equipment is completely assembled, leveled and plumbed. Concrete must be allowed to cure completely before using the equipment (at least 72 hours).

(C) Refer to Installation Manual for 09 Collars and 11 Socket Clamps installation instructions.

(D) An appropriate energy absorbing safety surface is required under and around all playground equipment. Loose fill protective surfacing is shown only as an example for the purpose of this assembly instruction. Other surfacing material may vary in thickness and/or compression depths. See free publication - The Handbook for Public Playground Safety, Publication #325 at www.cpsc.gov for the surfacing appropriate for the fall height of the equipment or consult your surfacing supply representative.

FIGURE 1
Belt Bridge R5



Step 1

Locate and attach collars at heights shown in Elevation View. (See Note C)

* Height shown from top of deck to top of collar.

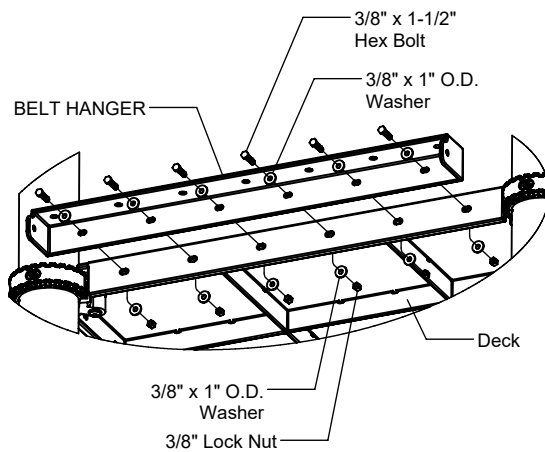
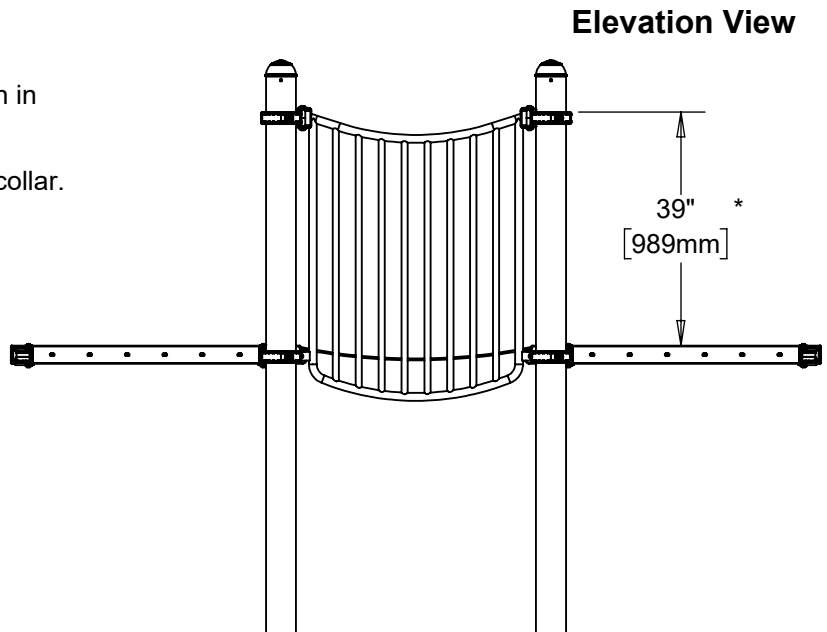
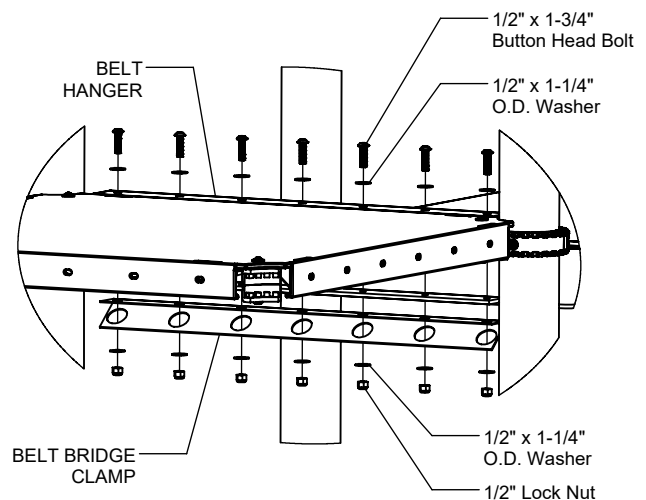


FIGURE 2

Step 2

Attach Belt Hanger to Deck as shown in Figure 2.



Step 3

Attach Belt to Belt Hanger with Belt Bridge Clamp as shown in Figure 3. (See Note A)

Step 4

Attach Belt Bridge H Rail to collar as shown in Figure 1.1. (See Note A)

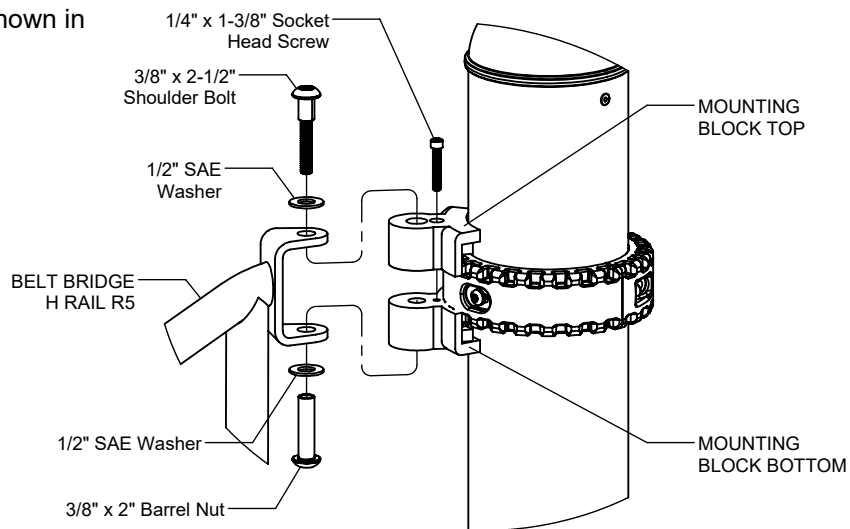


Figure 1.1

Step 5

Attach Belt Bridge H Rail to Belt Hanger as shown in Figure 1.2. (See Note A)

Step 6

Fully tighten all fasteners according to the "TIGHTENING TORQUE FOR HARDWARE" section of the Installation Manual.

Step 7

Place required protective surfacing under and around Belt Bridge R5. (See Note D)

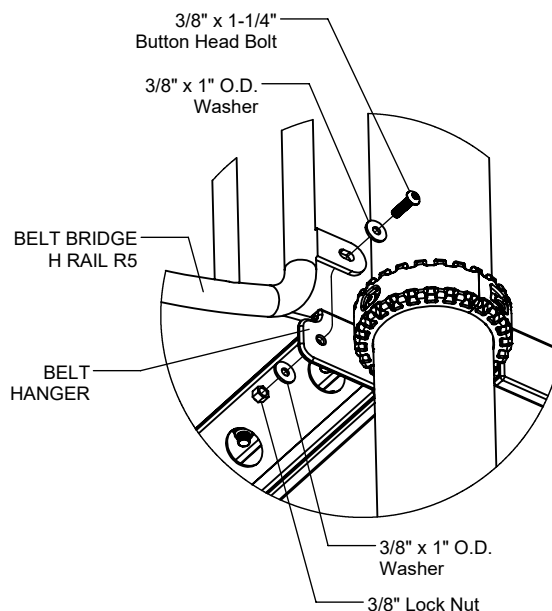


Figure 1.2

BELT BRIDGE R5

INSTALLATION INSTRUCTIONS

R5-1504
Page 4 of 4

Parts List

Part #	DESCRIPTION	QTY
BF-4169	Belt Bridge Clamp	2
CF-4168	Bridge Belt Hanger R5	2
FS-1504-R45	Belt Bridge H. Rail R5	2
GF-7006-B	Mounting Block R5 Bottom	4
GF-7006-T	Mounting Block R5 Top	4
HF-0016	R5 Bridge Belt	1
9103062-TR	Bolt Button Head 3/8" x 1-1/4"	4
9105082	Bolt Button Head 1/2" x 1-3/4"	14
9123072	Bolt Hex 3/8" x 1-1/2"	12
9143112-TR	Bolt Shoulder 3/8" x 2-1/2" BH	4
9281062-5-TR	Screw Soc HD 1/4" x 1-3/8"	4
9333002	Washer Flat 3/8" x 1" O.D. x .100" thick	32
9335062	Washer Flat 1/2" x 1-1/4" OD	28
9345002	Washer Flat SAE 1/2"	8
9413002	Nut Lock 3/8"	16
9415132	Nut Lock 1/2"	14
9443092-TR	Nut Barrel 3/8" x 2" BH	4

Specifications

BELT BRIDGE H. RAIL R5:

Shall be fabricated using Ø1.315 12ga. and Ø1.029 14ga steel tubing with 1/4" sheet steel tabs and clevises and will have a multi-stage baked-on powder coat finish.

BRIDGE BELT HANGER R5:

Shall be fabricated using 12ga sheet steel and shall be Play-Tuff™ coated after fabrication.

BRIDGE BELT CLAMP:

Shall be fabricated using 12ga sheet steel and will have a multi-stage baked-on powder coat finish.

BRIDGE BELT:

Shall be 3/8" thick, 3-ply rubber belt.

MOUNTING BLOCKS:

Shall be two-part and precision die-cast from a high strength aluminum alloy and will have a multi-stage baked-on powder coat finish.

HARDWARE:

Shall be stainless steel, zinc/nickel plated or galvanized as required to resist rust and corrosion.

Maintenance

Periodically tighten all screws, bolts and nuts. A periodic inspection of all parts is necessary. If a part is broken or worn, replace immediately. For general maintenance please refer to our Playground Maintenance Manual.



www.playcraftsystems.com
For Customer Service Call
800.333.8519 (U.S.A.) or 541.955.9199 (International)

Rev B
5/22/2023