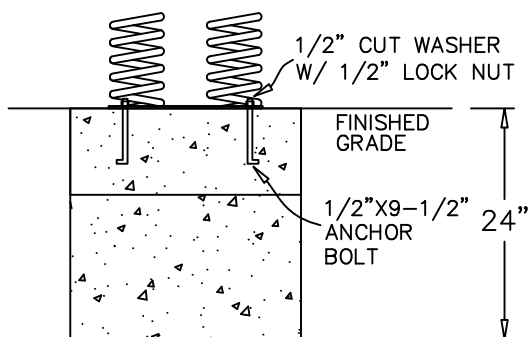
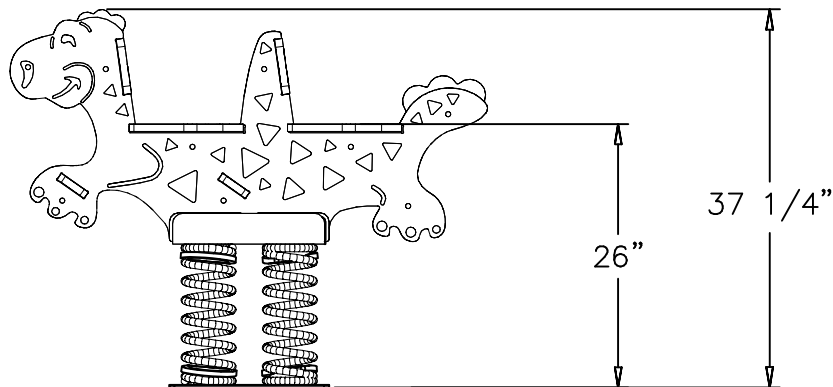
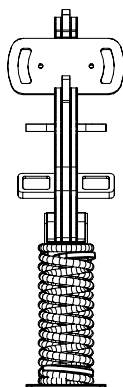
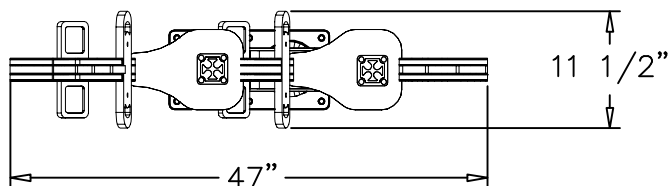


### Footings Detail

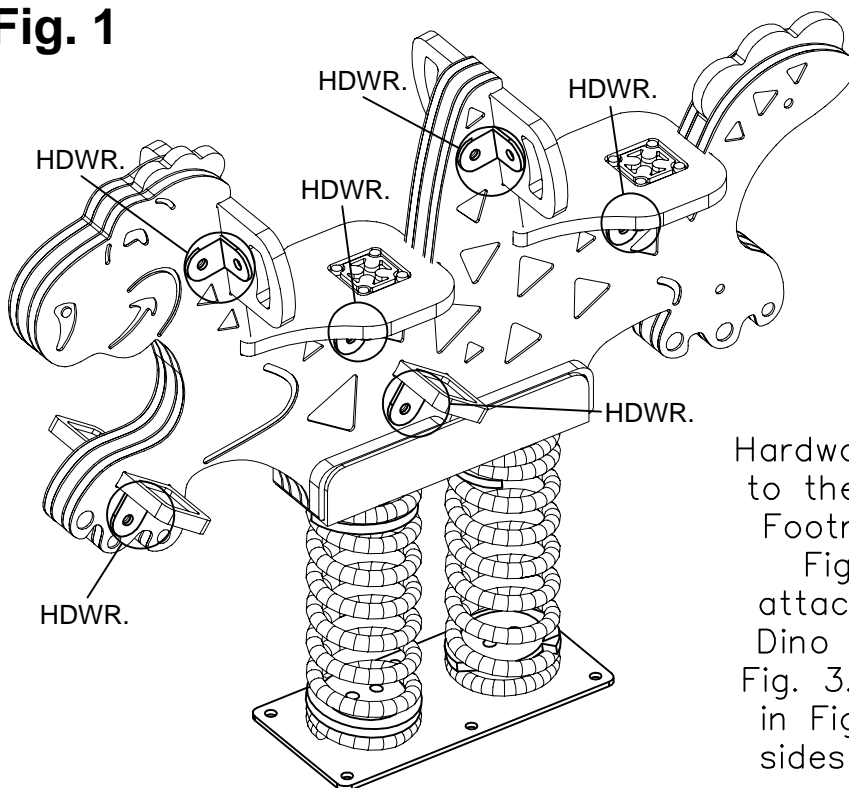
Spring Rider Footing must be 24" deep from finished grade.



### Assembly Views

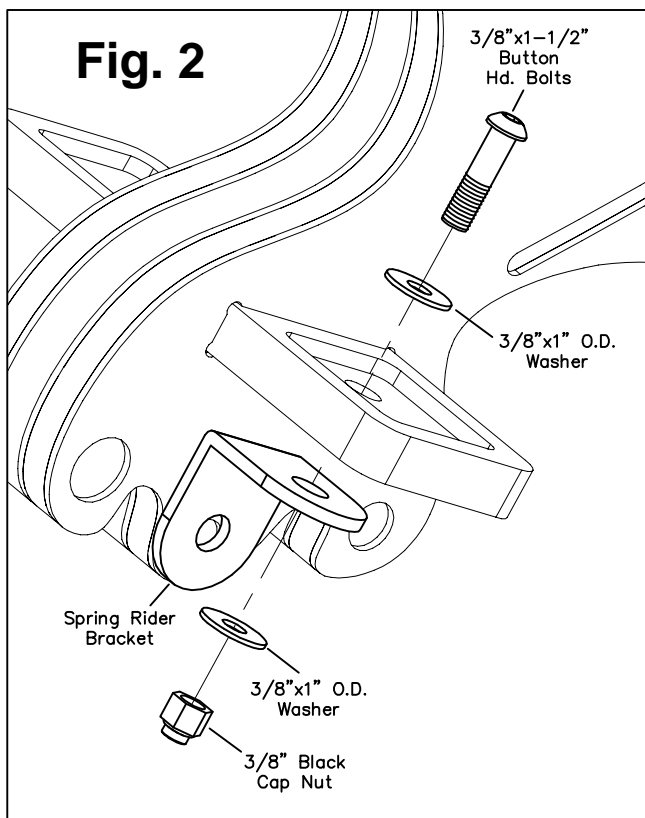


**Fig. 1**

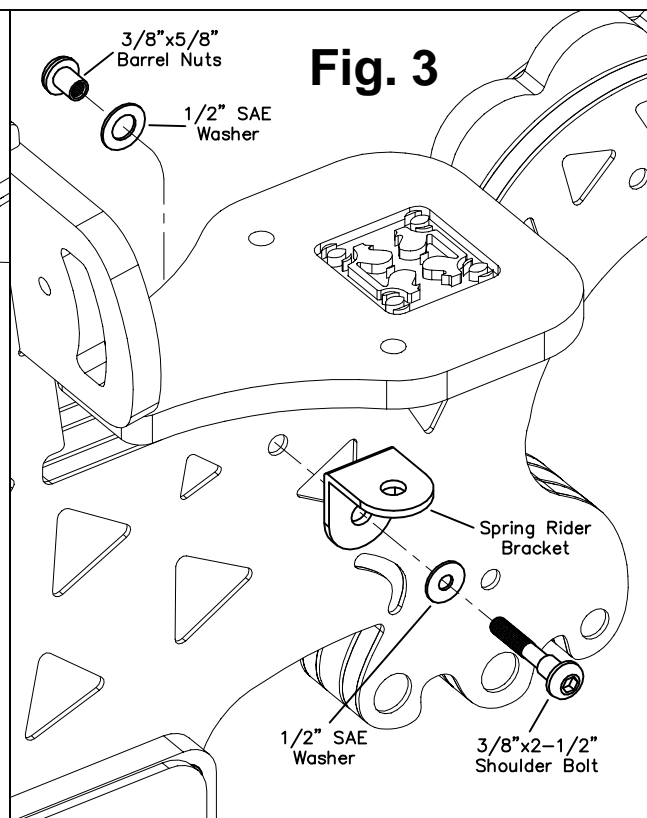


Hardware attaching brackets to the Handles, Seats, and Footrests can be seen in Fig. 2, and hardware attaching brackets to the Dino Body can be seen in Fig. 3. The assembly shown in Fig. 2 is used on both sides of the Spring Rider.

**Fig. 2**



**Fig. 3**



## Parts List

QTY.	DESCRIPTION	PART #
1	Dual Dino Rider Unit	1385
12	Spring Rider Brackets	4466
12	1-1/2" Button Hd. Bolts	9103072-TR
6	2-1/2" Shoulder Bolts	9143112-TR
6	1/2" x 9 1/2" Anchor Bolts	9175393
6	1/2" Flat Washer	9315003
24	3/8"x1" O.D. Washers	9333002
12	1/2" SAE Washers	9345002
6	1/2" Lock Nuts	9415132
6	3/8"x5/8" Barrel Nuts	9443022-TR
12	3/8" Black Cap Nuts	9463160-BLK

## Specifications

### DUAL DINO SPRING RIDER:

#### **BODY:**

Side Panels, Seats, Handles, Core Panel & Footrests shall be made from high-density, 3/4 " thick, hot extruded polyethylene sheet plastic specially formulated for optimum UV stability and color retention.

#### **SPRINGS:**

Free height 14", 5-3/4" O.D. steel finished with a baked-on powder coating.

#### **HARDWARE:**

Shall be zinc/nickel plated, galvanized or stainless steel as required to resist rust and corrosion.

## Maintenance

Periodically tighten all screws, bolts and nuts.  
A periodic inspection of all parts is necessary.  
If a part is broken or worn, replace immediately.

## Installation

### \*\*\* CAUTION \*\*\*

This Dual Spring Rider has been designed for use by children ages 2-12 years of age and has a maximum capacity of (2) two users. Adult supervision is recommended.

Use Zone: According to the ASTM-1487-01, Rocking equipment upon which the user is intended to sit shall be no less than 72 in. in all directions from the outer perimeter of the play structure in the resting state.

#### **Step 1.**

Attach the Handles, Seats, and Footrests to the Dual Dino Spring Rider using the hardware shown in Figures 2 & 3.

#### **Step 2.**

Dig footings as shown in Fig. 1.0

**IMPORTANT:** For areas with soft soil conditions, larger footings may be required.

#### **Step 3.**

Use Spring Base Plate as a template to make a plywood template for the placement of anchor bolts (plywood not supplied).

#### **Step 4.**

Attach 1/2" x 9 1/2" Anchor Bolts with 1/2" Flat Washers and Nuts to holes in templates, allow approx. 1" of thread to protrude from concrete.

#### **Step 5.**

Pour concrete footing and lay template on surface in a level position. Force anchor bolts into concrete, allow 72 hours curing time before removing template.

#### **Step 6.**

Tighten all fasteners and make sure plastic caps are securely in place. Eliminate sharp points and sharp edges (burring) on installed hardware like bolts, nuts, etc. No more than two threads shall protrude from any given nut. Install safety surfacing material within the use zone of play structure, in accordance with ASTM specification F1292 appropriate for the fall height of each structure. Refer to the Safety Guidelines.

#### **Step 7.**

Install appropriate resilient Surfacing.