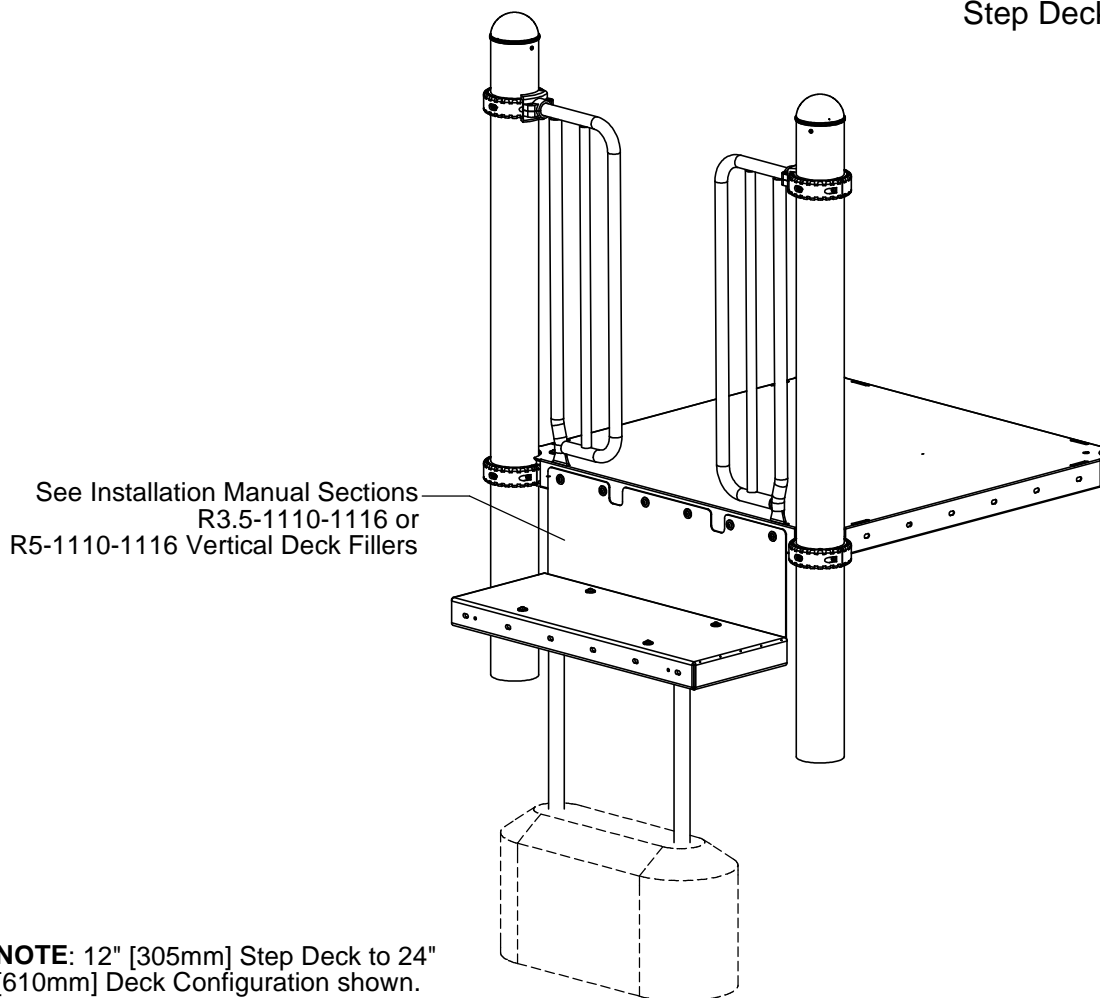


## IMPORTANT NOTES: Read First

- (A) Use liquid thread lock (such as Loctite®) with all threaded hardware. **Important:** Liquid thread lock (prior to curing) helps to eliminate the common problem of "thread seizure" in stainless steel hardware by serving as a lubricant during assembly.
- (B) Do not pour concrete until the equipment is completely assembled, leveled and plumbed. Concrete must be allowed to cure completely before using the equipment (at least 72 hours).
- (C) Refer to Installation Manual for R3.5-1110-1116 Vertical Deck Fillers or R5-1110-1116 Vertical Deck Fillers assembly instructions.
- (D) Use appropriate compliant protective surfacing and adjust footing depths accordingly. See free publication - The Handbook for Public Playground Safety, Publication #325 at [www.CPSC.gov](http://www.CPSC.gov) for the surfacing appropriate for the fall height of the equipment or consult your surfacing supply representative.
- (E) Vertical Deck Filler required for 12" [305mm] Step Deck to 24" [610mm] Deck. Vertical Deck Filler optional for 6" [152mm] Step Deck to 12" [305mm] Deck. Vertical Deck Filler required for all Canadian Step Deck heights.

**FIGURE 1**  
Step Deck Assembly



**NOTE:** 12" [305mm] Step Deck to 24" [610mm] Deck Configuration shown. Other configurations will vary slightly, but do not affect the assembly.

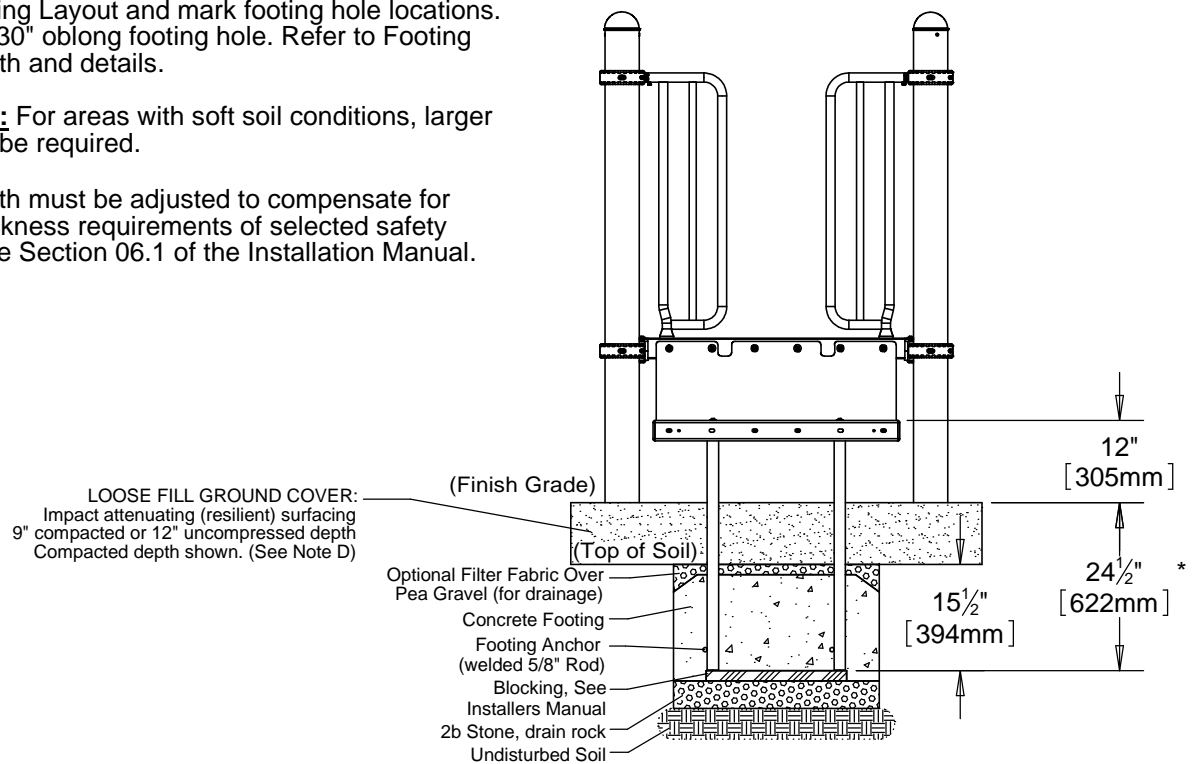
## Step 1

Refer to Footing Layout and mark footing hole locations. Dig (1) 12" x 30" oblong footing hole. Refer to Footing Detail for depth and details.

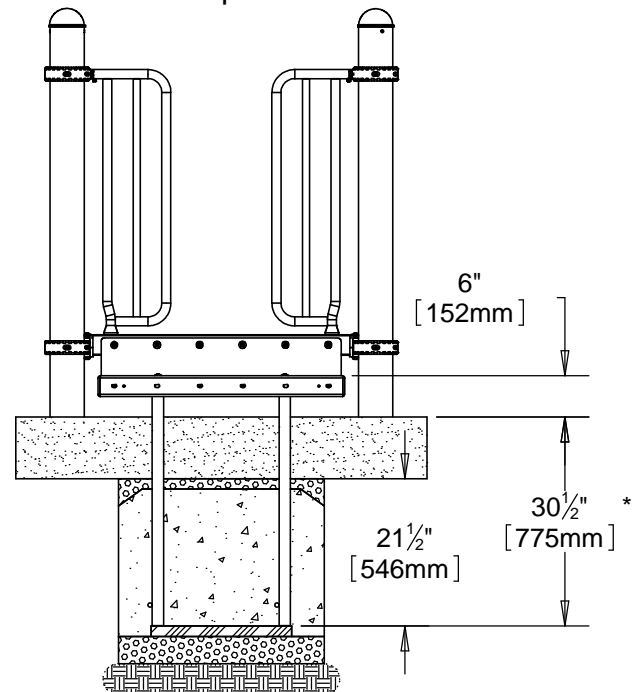
**IMPORTANT:** For areas with soft soil conditions, larger footings may be required.

\* Footing depth must be adjusted to compensate for the depth/thickness requirements of selected safety surfacing. See Section 06.1 of the Installation Manual.

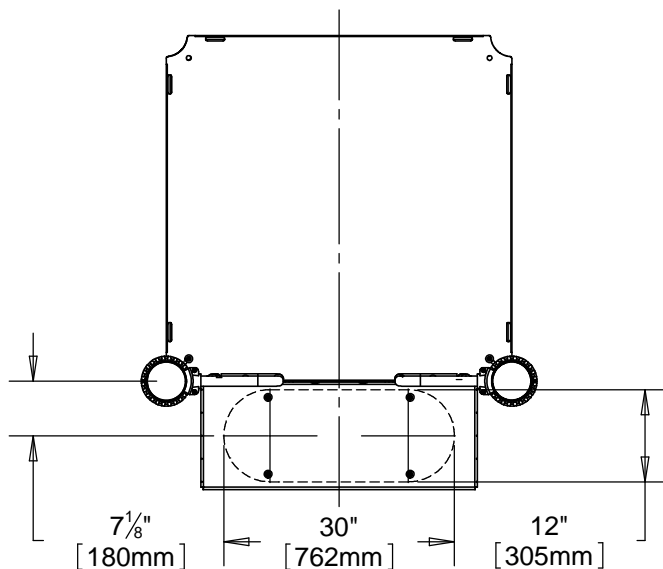
### Footing Detail 12" Step Deck

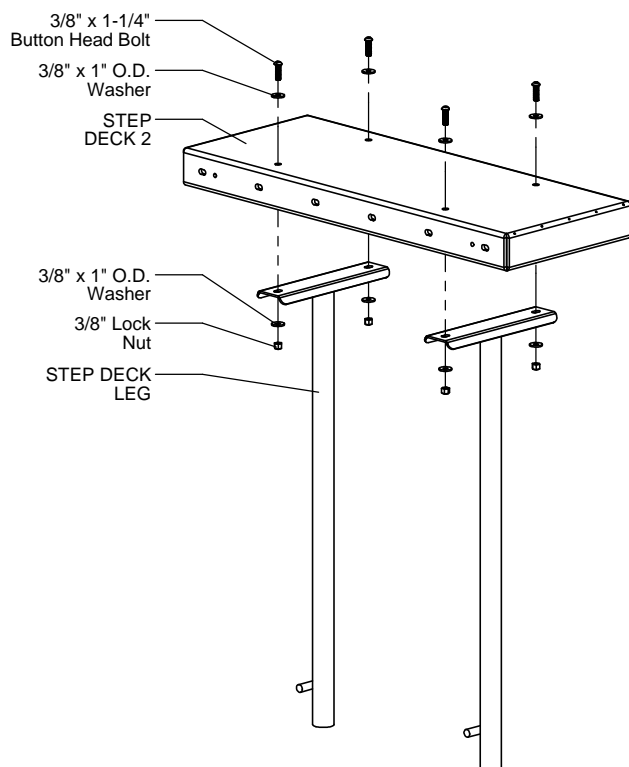


### Footing Detail 6" Step Deck



### Top View - Footing Layout





**Figure 2**

## Step 2

Attach the Step Deck 2 to the Step Deck Leg as shown in Figure 2. (See Note A)

## Step 3

If required attach Vertical Deck Filler. (See Note C)

## Step 4

Fully tighten all fasteners according to the "TIGHTENING TORQUE FOR HARDWARE" section of the Installation Manual.

## Step 5

Place in footing hole. Plumb and level entire component. Pour concrete into footing hole. Allow at least 72 hours to cure before using this equipment. (See Note B)

## Step 6

Place appropriate compliant protective surfacing under and around Step Deck Assembly. (See Note D)

## Specifications

### STEP DECK 2:

Shall be fabricated using punched and formed 12 gauge sheet steel. The Step Deck #2 shall be Play-Tuff™ coated after fabrication.

### STEP DECK LEGS:

Shall be fabricated from 1.660" O.D. 11 gauge steel tubing welded to a 10 gauge mounting bracket. Step Deck Leg shall have a multi-stage baked-on powder coat finish.

### HARDWARE:

Shall be stainless steel, zinc/nickel plated or galvanized as required to resist rust and corrosion.

## Parts List

Part #	DESCRIPTION	QTY.
CE-4150	Step Deck 2	1
FS-1202	Step Deck Leg	2
9103062-TR	Bolt Button Head 3/8" x 1-1/4"	4
9333002	Washer Flat 3/8" x 1" O.D. x .100" thick	8
9413002	Nut Lock 3/8"	4

## Maintenance

Periodically tighten all screws, bolts and nuts. A periodic inspection of all parts is necessary. If a part is broken or worn, replace immediately. For general maintenance please refer to our Playground Maintenance Manual.