

IMPORTANT NOTES: Read First

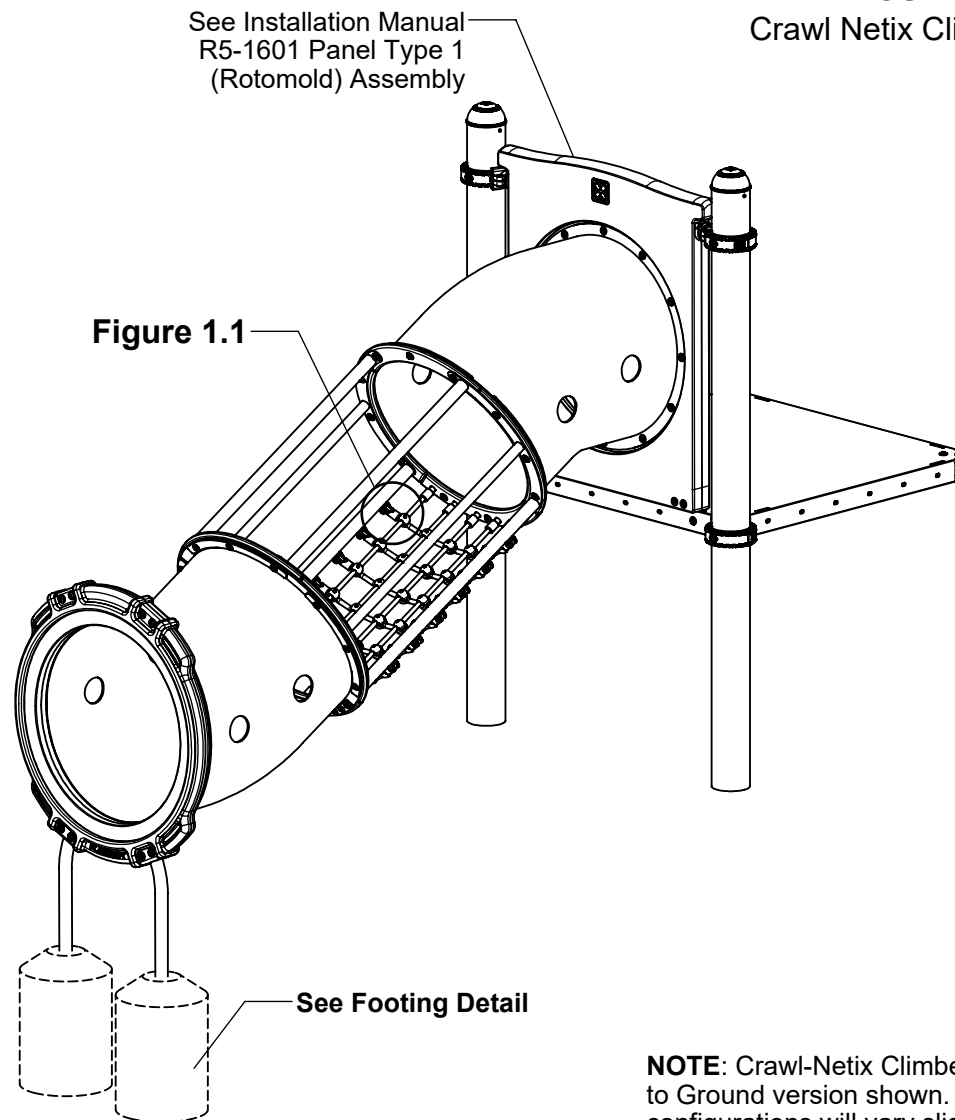
(A) Use liquid thread lock (such as Loctite®) with all threaded hardware. **Important:** Liquid thread lock (prior to curing) helps to eliminate the common problem of "thread seizure" in stainless steel hardware by serving as a lubricant during assembly.

(B) Do not pour concrete until the equipment is completely assembled, leveled and plumbed. Concrete must be allowed to cure completely before using the equipment (at least 72 hours).

(C) Refer to Installation Manual for R5-1601 Panel Type 1 installation instructions.

(D) An appropriate energy absorbing safety surface is required under and around all playground equipment. Loose fill protective surfacing is shown only as an example for the purpose of this assembly instruction. Other surfacing material may vary in thickness and/or compression depths. See free publication - The Handbook for Public Playground Safety, Publication #325 at www.cpsc.gov for the surfacing appropriate for the fall height of the equipment or consult your surfacing supply representative.

FIGURE 1
Crawl Netix Climber 36"



NOTE: Crawl-Netix Climber 36" Deck to Ground version shown. Other configurations will vary slightly, but does not affect assembly.

Step 1

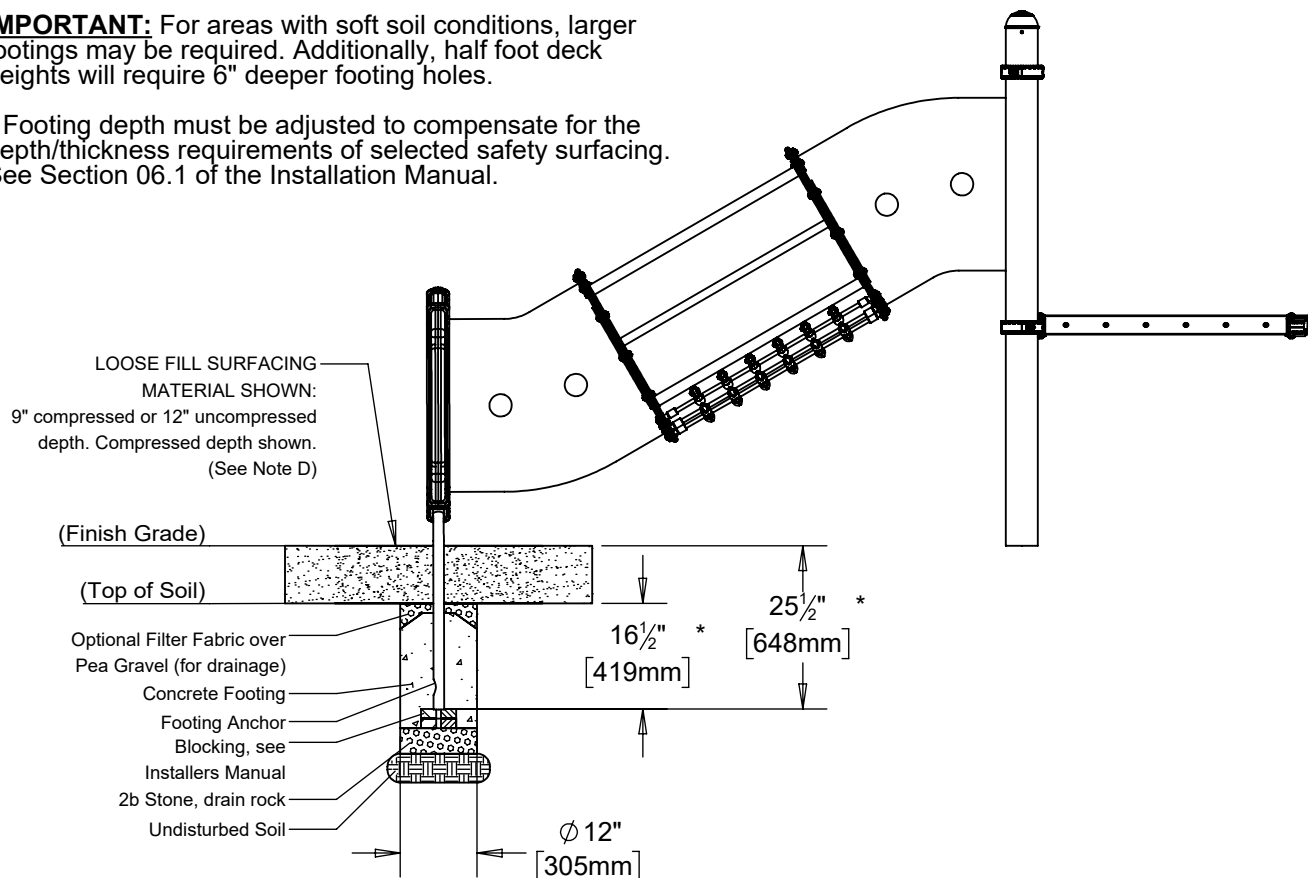
For Deck to Ground Version Only

Refer to Footing Layout and mark footing hole locations. Dig 2 Ø 12" footing holes. Refer to Footing Detail for depth and details.

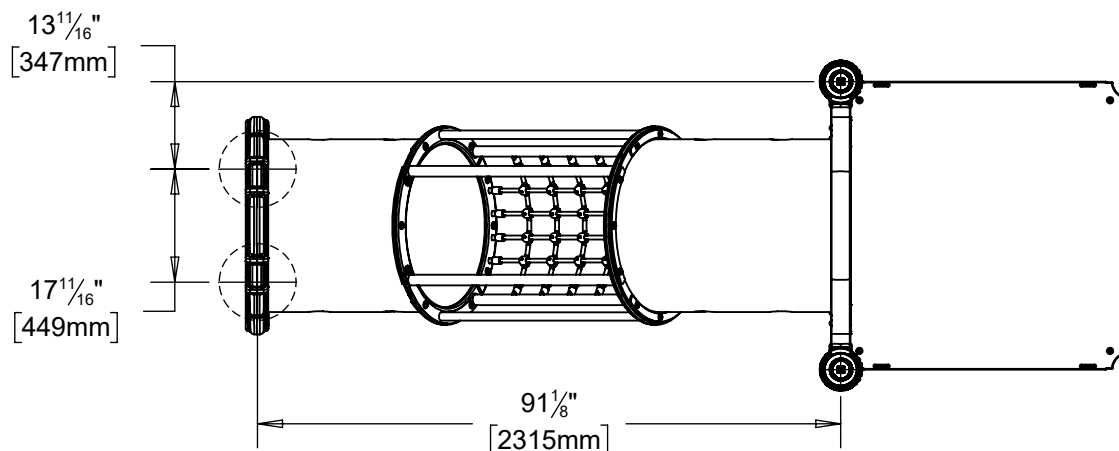
IMPORTANT: For areas with soft soil conditions, larger footings may be required. Additionally, half foot deck heights will require 6" deeper footing holes.

* Footing depth must be adjusted to compensate for the depth/thickness requirements of selected safety surfacing. See Section 06.1 of the Installation Manual.

Footing Detail



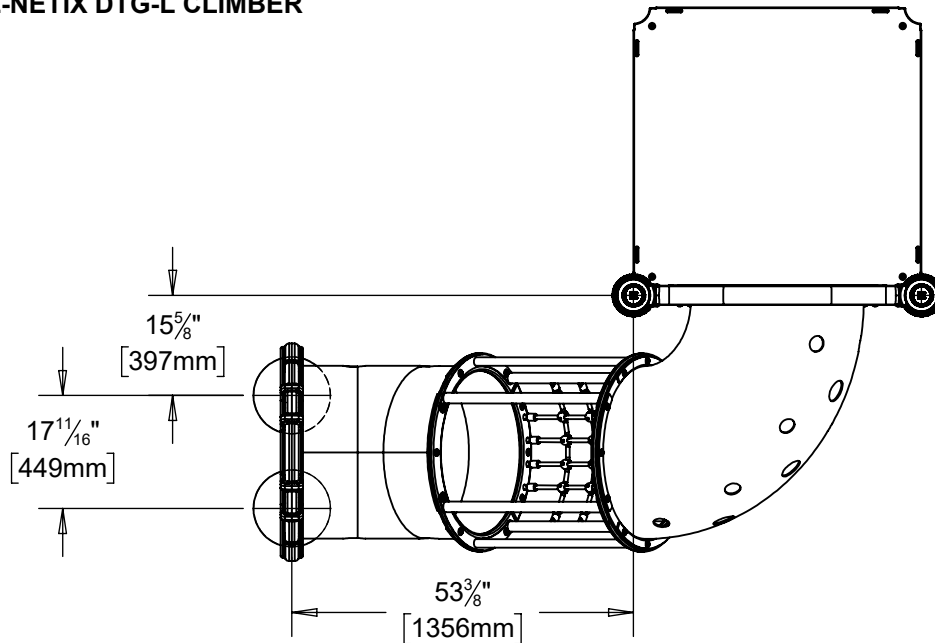
Top View - Footing Layout CRAWL-NETIX DTG CLIMBER



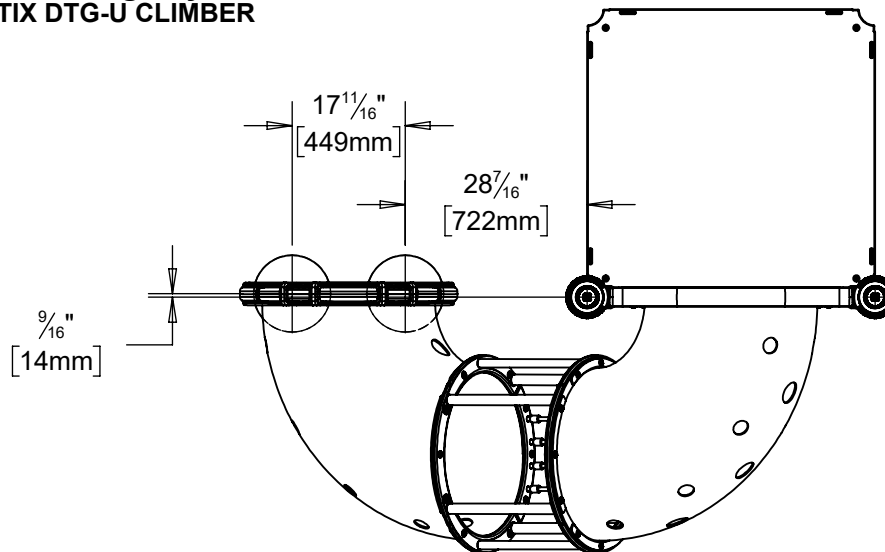
CRAWL-NETIX CLIMBER R5 INSTALLATION INSTRUCTIONS

R5-1535
Page 3 of 7

Top View - Footing Layout CRAWL-NETIX DTG-L CLIMBER



Top View - Footing Layout CRAWL-NETIX DTG-U CLIMBER



Step 2 (Factory Assembled) For Deck to Ground Version Only

Attach Hardware to Round Roto Panel as shown in Figure 2. (See Note A)

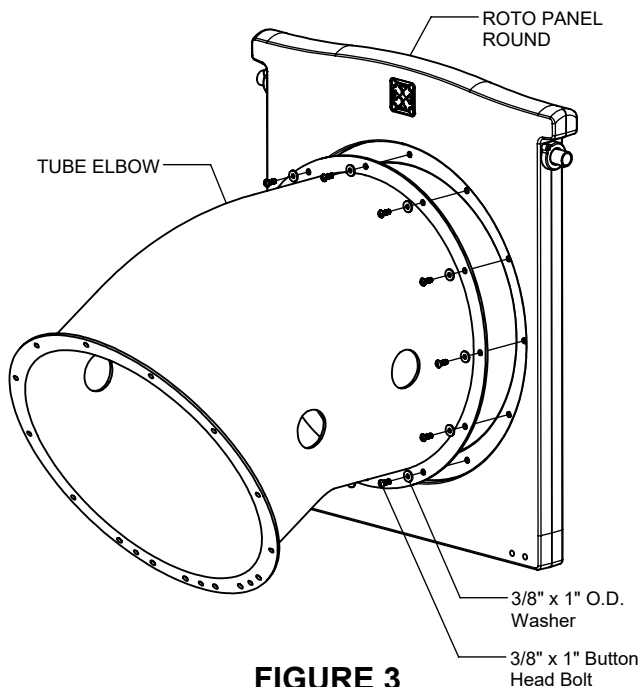


FIGURE 3

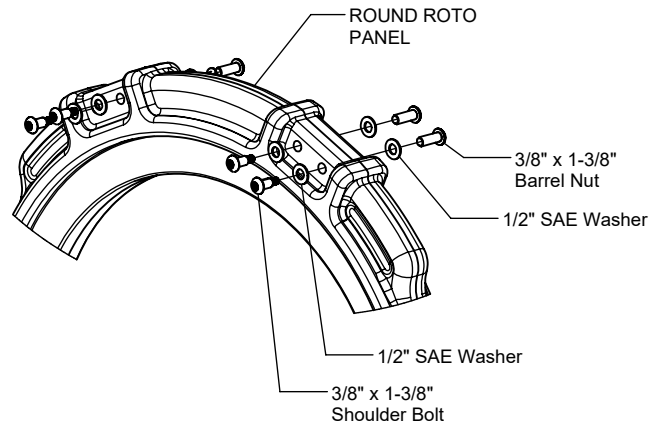


FIGURE 2

Step 3

Attach Tube Elbow to the Roto Panel Round as shown in Figure 3. (See Note A)

NOTE: 2 Places for Deck to Deck Version

Step 4 For Deck to Ground Version Only

Attach Tube Elbow to Round Roto Panel as shown in Figure 4. (See Note A)

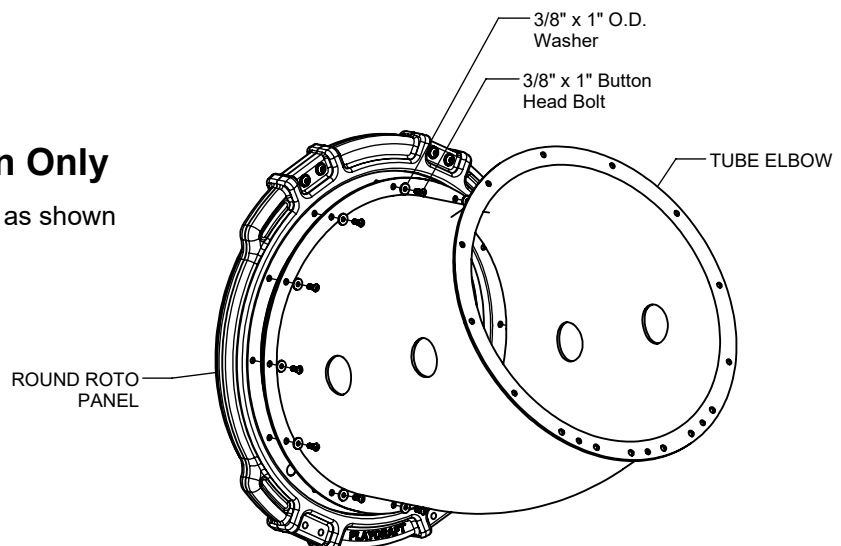


FIGURE 4

Step 5

For Deck to Ground Version Only

Attach Legs to Round Roto Panel as shown in Figure 5. (See Note A)

Step 6

Attach Roto Panel Round (Step 3) to deck as detailed in R5-1601. (See Note C)

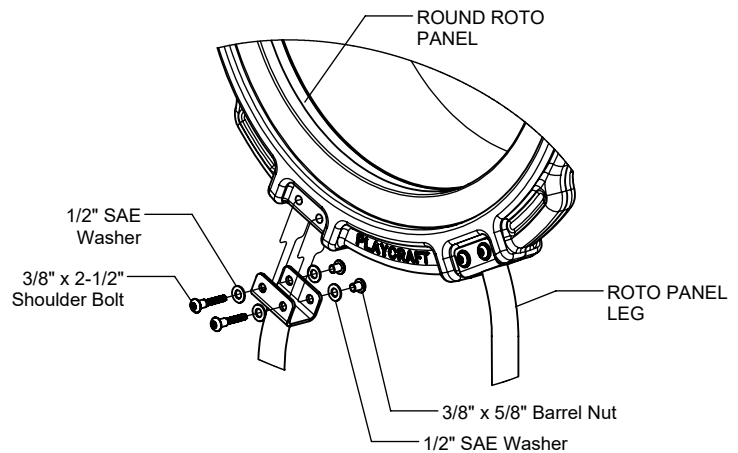


FIGURE 5

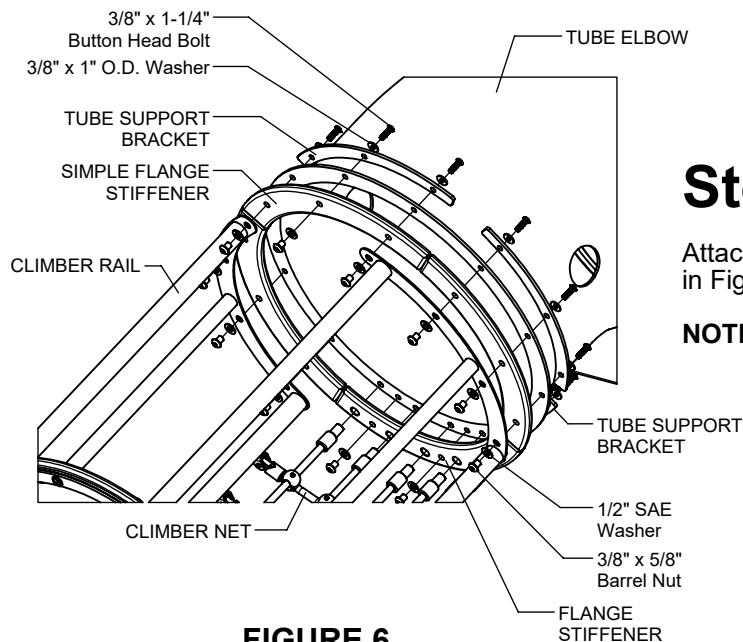


FIGURE 6

Step 7

Attach Climber Rail to Tube Elbow as shown in Figure 6. (See Note A)

NOTE: 2 Places

Step 8

Attach Climber Net to Climber Rail as shown in Figure 1.1. (See Note A)

Step 9

Fully tighten all fasteners according to the "TIGHTENING TORQUE FOR HARDWARE" section of the Installation Manual.

Step 10

Place required protective surfacing under and around Crawl-Netix Climber. (See Note D)

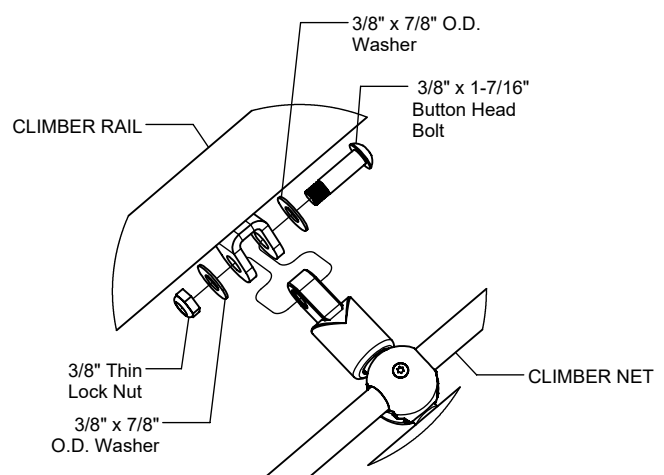


Figure 1.1

CRAWL-NETIX CLIMBER R5

INSTALLATION INSTRUCTIONS

R5-1535
Page 6 of 7

Parts List

S-1535-DTD-36 CRAWL-NETIX DTD CLIMBER 36"		
Part #	DESCRIPTION	QTY
AE-0964	Crawl-Netix Climber DTG Net Plate	4
AE-4135	Tube Support Plate	4
DE-1503-DTD	30 Deg MM - Crawl-Netix Deck to Deck	2
EE-0618	Crawl-Netix Climber Flange Stiffener	4
EE-0618-SMP	Crawl-Netix Climber Simple Flange Stiffener	4
FS-1536-3675	Crawl-Netix Climber Rail Section 36.75	2
HE-0128-3675	Crawl-Netix Climber Net Section 36.75	2
9103052-TR	Bolt Button Head 3/8" x 1"	24
9103062-TR	Bolt Button Head 3/8" x 1-1/4"	48
9103200-TR	Bolt Button Head 3/8" x 1-7/16"	24
9333002	Washer Flat 3/8" x 1" O.D. x .100" thick	72
9333042	Washer Flat 3/8" x 7/8" O.D.	48
9345002	Washer Flat SAE 1/2"	24
9423002	Nut Lock Thin 3/8"	24
9443022-TR	Nut Barrel 3/8" x 5/8" BH	24

S-1535-DTG-36 CRAWL-NETIX DTG CLIMBER 36"		
Part #	DESCRIPTION	QTY
AE-0964	Crawl-Netix Climber DTG Net Plate	2
AE-4135	Tube Support Plate	6
DE-1503-CNB	Vertical Crawl Tube Elbow 30 Deg MM - Crawl-Netix Bottom	1
DE-1503-CNT	Vertical Crawl Tube Elbow 30 Deg MM - Crawl-Netix Top	1
EE-0618	Crawl-Netix Climber Flange Stiffener	2
EE-0618-SMP	Crawl-Netix Climber Simple Flange Stiffener	6
FS-1535-RL	Crawl-Netix Climber Rail	2
FS-16101-LEG	Roto Panel Leg RV	2
HE-0128-38	Crawl-Netix Climber Net Section 38	1
9103052-TR	Bolt Button Head 3/8" x 1"	24
9103062-TR	Bolt Button Head 3/8" x 1-1/4"	36
9103200-TR	Bolt Button Head 3/8" x 1-7/16"	12
9143112-TR	Bolt Shoulder 3/8" x 2-1/2" BH	4
9333002	Washer Flat 3/8" x 1" O.D. x .100" thick	60
9333042	Washer Flat 3/8" x 7/8" O.D.	24
9345002	Washer Flat SAE 1/2"	32
9423002	Nut Lock Thin 3/8"	12
9443022-TR	Nut Barrel 3/8" x 5/8" BH	28

S-1535-DTG-L36 CRAWL-NETIX DTG L CLIMBER 36"		
Part #	DESCRIPTION	QTY
AE-0964	Crawl-Netix Climber DTG Net Plate	2
AE-4135	Tube Support Plate	6
DE-1503-CNB	Vertical Crawl Tube Elbow 30 Deg MM - Crawl-Netix Bottom	1
DE-1509-CN-P	90° Crawl Tube Elbow MM - Crawl-Netix Panel	1
EE-0618	Crawl-Netix Climber Flange Stiffener	2
EE-0618-SMP	Crawl-Netix Climber Simple Flange Stiffener	6
FS-1535-RL28	Crawl-Netix Climber Rail 28.5"	2
FS-16101-LEG	Roto Panel Leg RV	2
HE-0128-285	Crawl-Netix Climber Net Section 28.5	1
9103052-TR	Bolt Button Head 3/8" x 1"	24
9103062-TR	Bolt Button Head 3/8" x 1-1/4"	36
9103200-TR	Bolt Button Head 3/8" x 1-7/16"	8
9143112-TR	Bolt Shoulder 3/8" x 2-1/2" BH	4
9333002	Washer Flat 3/8" x 1" O.D. x .100" thick	60
9333042	Washer Flat 3/8" x 7/8" O.D.	16
9345002	Washer Flat SAE 1/2"	32
9423002	Nut Lock Thin 3/8"	8
9443022-TR	Nut Barrel 3/8" x 5/8" BH	28

S-1535-DTG-U36 CRAWL-NETIX DTG U CLIMBER 36"		
Part #	DESCRIPTION	QTY
AE-0964	Crawl-Netix Climber DTG Net Plate	2
AE-4135	Tube Support Plate	6
DE-1509-CN-P	90° Crawl Tube Elbow MM - Crawl-Netix Panel	2
EE-0618	Crawl-Netix Climber Flange Stiffener	2
EE-0618-SMP	Crawl-Netix Climber Simple Flange Stiffener	6
FS-1535-RL19	Crawl-Netix Climber Rail 19.5"	2
FS-16101-LEG	Roto Panel Leg RV	2
HE-0112-19	Crawl-Netix Climber Net Section 19.5	1
9103052-TR	Bolt Button Head 3/8" x 1"	24
9103062-TR	Bolt Button Head 3/8" x 1-1/4"	36
9103200-TR	Bolt Button Head 3/8" x 1-7/16"	4
9143112-TR	Bolt Shoulder 3/8" x 2-1/2" BH	4
9333002	Washer Flat 3/8" x 1" O.D. x .100" thick	60
9333042	Washer Flat 3/8" x 7/8" O.D.	8
9345002	Washer Flat SAE 1/2"	32
9423002	Nut Lock Thin 3/8"	4
9443022-TR	Nut Barrel 3/8" x 5/8" BH	28



www.playcraftsystems.com
For Customer Service Call
800.333.8519 (U.S.A.) or 541.955.9199 (International)

Rev C
2/20/2023

CRAWL-NETIX CLIMBER R5

INSTALLATION INSTRUCTIONS

R5-1535
Page 7 of 7

Assembled Parts List

S-1535-DTG-36 CRAWL-NETIX DTG CLIMBER 36"

Part #	DESCRIPTION	QTY
DH-0002	Round Roto Panel RV	1
9143062-TR	Bolt Shoulder 3/8" x 1-3/8" BH	4
9345002	Washer Flat SAE 1/2"	8
9443062-TR	Nut Barrel 3/8" x 1-3/8" BH	4

Specifications

CRAWL-NETIX FLANGE STIFFENERS:

Shall be made from high density 3/4" sheet plastic specially formulated for optimum UV stability and color retention.

CRAWL-NETIX NET PLATE:

Shall be cut from 1/4" thick sheet steel and will have a multi-stage baked-on powder coat finish.

CRAWL-NETIX NET:

Shall be made from 16mm steel-reinforced rope with high-strength copolymer plastic intersection connectors and machined aluminum and clevises.

CRAWL-NETIX RAIL:

Shall be fabricated using 1.660" O.D 11 gauge steel tubing with welded 10 gauge steel plate and will have a multi-stage baked-on powder coat finish.

TUBE ELBOW:

Shall be constructed of UV-stabilized, rotationally molded, linear, low density polyethylene with an average wall thickness of .250".

TUBE SUPPORT PLATE:

Shall be cut from 1/4" thick sheet steel and will have a multi-stage baked-on powder coat finish.

ROTO PANEL LEG:

Shall be fabricated using 1.660" O.D 11 gauge steel tubing with welded 3/16" thick bracket, and a 1/4" thick steel plate and will have a multi-stage baked-on powder coat finish.

ROTO ROUND PANEL:

Shall be constructed of UV-stabilized, rotationally molded, linear, low density polyethylene with an average wall thickness of .250".

HARDWARE:

Shall be stainless steel, zinc/nickel plated or galvanized as required to resist rust and corrosion.

Maintenance

Periodically tighten all screws, bolts and nuts. A periodic inspection of all parts is necessary. If a part is broken or worn, replace immediately. For general maintenance please refer to our Playground Maintenance Manual.



www.playcraftsystems.com
For Customer Service Call
800.333.8519 (U.S.A.) or 541.955.9199 (International)

Rev C
2/20/2023