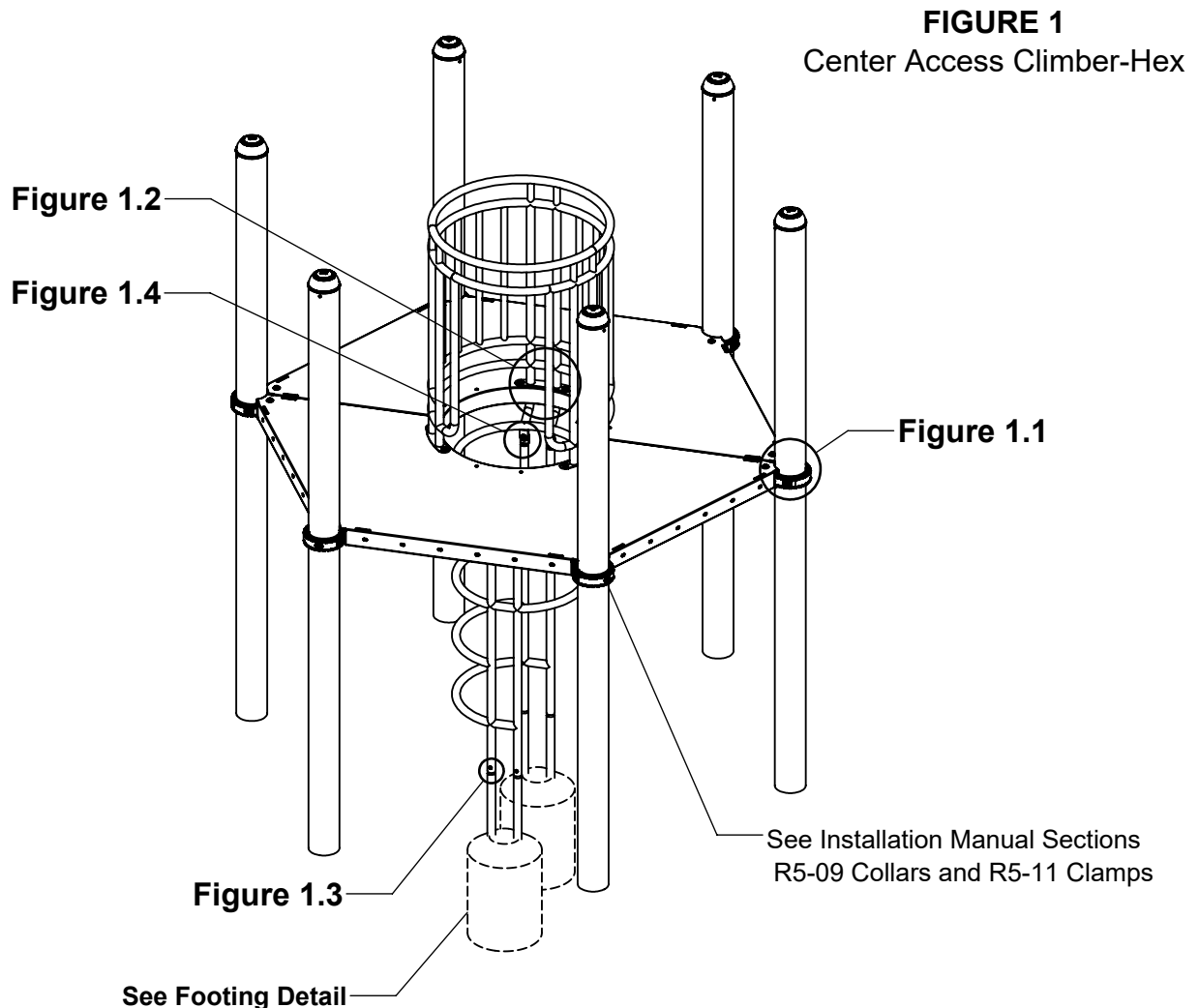


IMPORTANT NOTES: Read First

- (A) Use liquid thread lock (such as Loctite®) with all threaded hardware. **Important:** Liquid thread lock (prior to curing) helps to eliminate the common problem of "thread seizure" in stainless steel hardware by serving as a lubricant during assembly.
- (B) Do not pour concrete until the equipment is completely assembled, leveled and plumbed. Concrete must be allowed to cure completely before using the equipment (at least 72 hours).
- (C) Refer to Installation Manual for R5-09 Collars and R5-11 Socket Clamps installation instructions.
- (D) An appropriate energy absorbing safety surface is required under and around all playground equipment. Loose fill protective surfacing is shown only as an example for the purpose of this assembly instruction. Other surfacing material may vary in thickness and/or compression depths. See free publication - The Handbook for Public Playground Safety, Publication #325 at www.cpsc.gov for the surfacing appropriate for the fall height of the equipment or consult your surfacing supply representative.



NOTE: R5 5' Deck Height shown.
Other configurations will vary slightly,
but does not affect assembly.

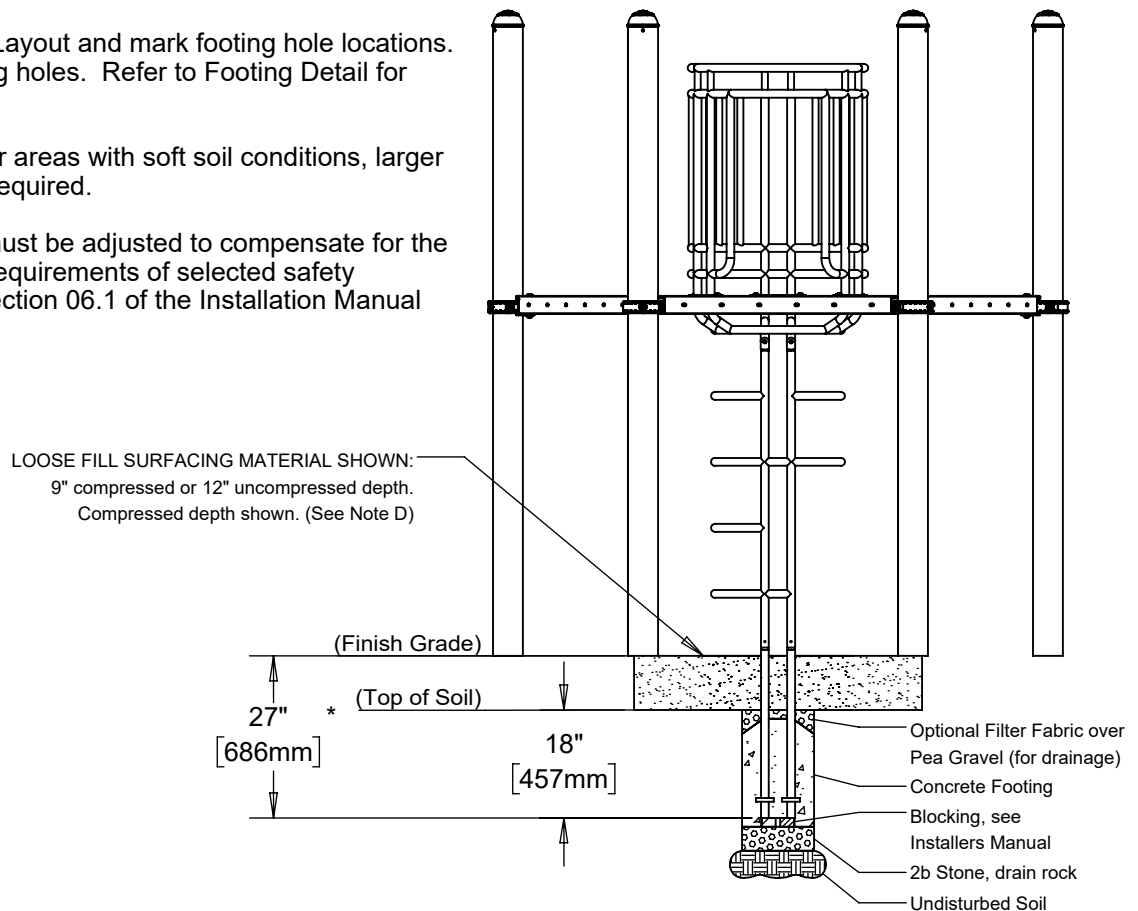
Step 1

Refer to Footing Layout and mark footing hole locations. Dig 2 Ø12" footing holes. Refer to Footing Detail for depth and details.

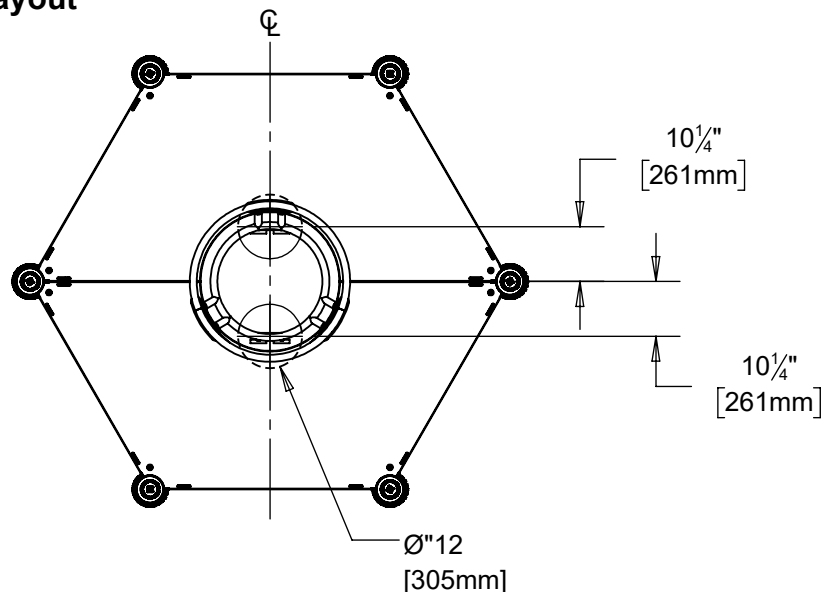
IMPORTANT: For areas with soft soil conditions, larger footings may be required.

* Footing depth must be adjusted to compensate for the depth/thickness requirements of selected safety surfacing. See Section 06.1 of the Installation Manual

Elevation View - Footing Detail



Top View - Footing Layout



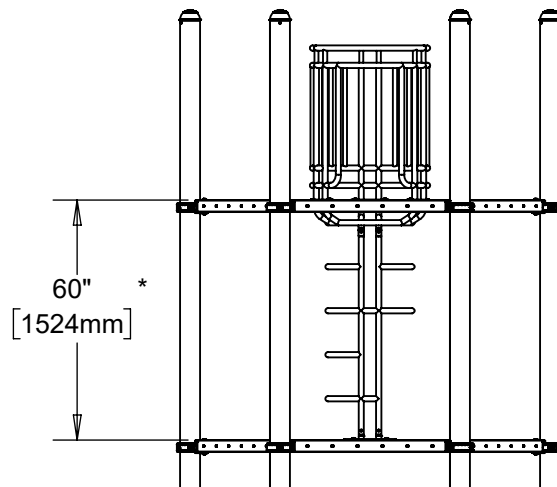
Step 2

Deck to Deck Version Only

Locate and attach collars at heights shown in Elevation View. (See Note B)

* 60" Center Access Climber-Hex Shown.
Set deck height according to structure layout and corresponding version of Center Access Climber-Hex.

Elevation View



Step 3

Attach Deck to Post as shown in Figure 1.1.
(See Note A).

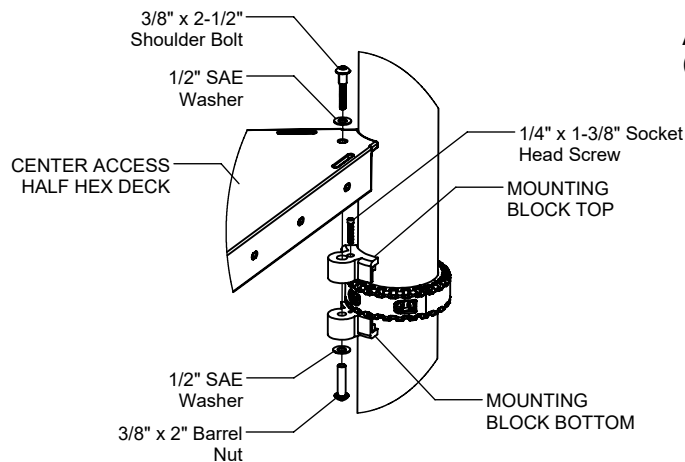


Figure 1.1

Step 4

Attach Deck to Deck as shown in Figure 2.
(See Note A).

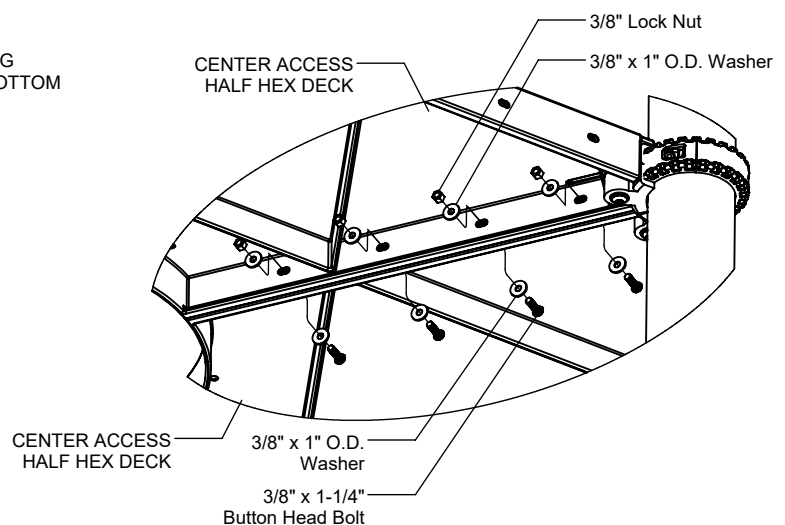


FIGURE 2

Step 5

Attach Center Access Hex Deck Barrier & Handle to Center Access Hex Deck as shown in Figure 1.2.
(See Note A)

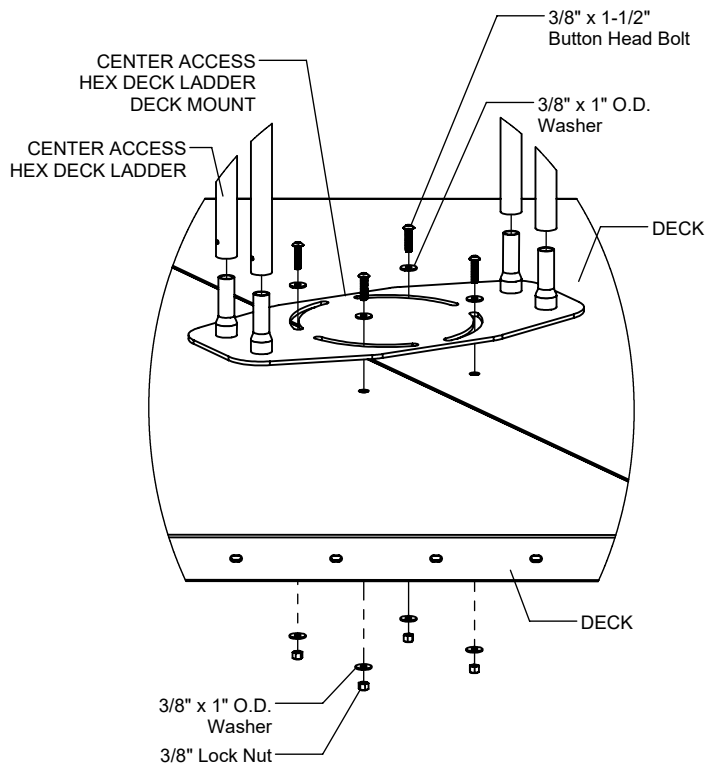


Figure 1.2

Step 6

For Deck to Deck version Only

Attach Center Access Hex Deck Ladder Mount to Hex Deck as shown in Figure 3. (See Notes A)

FIGURE 3

Step 7

For In-Ground Version Only

Attach Center Access Hex Ladder Leg to Center Access Hex Ladder as shown in Figure 1.3.
(See Note A)

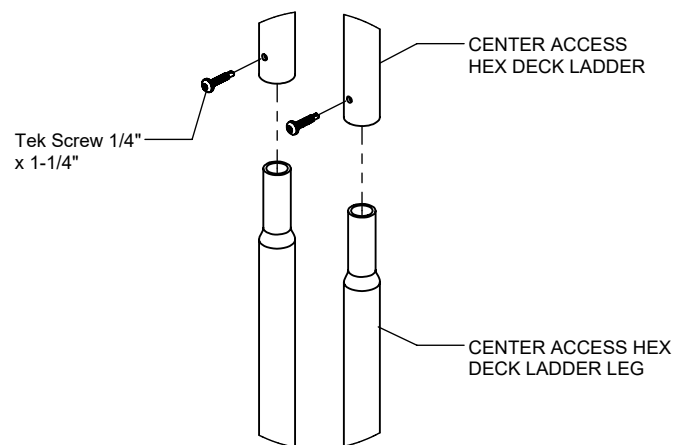


Figure 1.3

Step 8

Attach Center Access Hex Deck Ladder to Center Access Hex Deck Handle as shown in Figure 1.4. (See Note A)

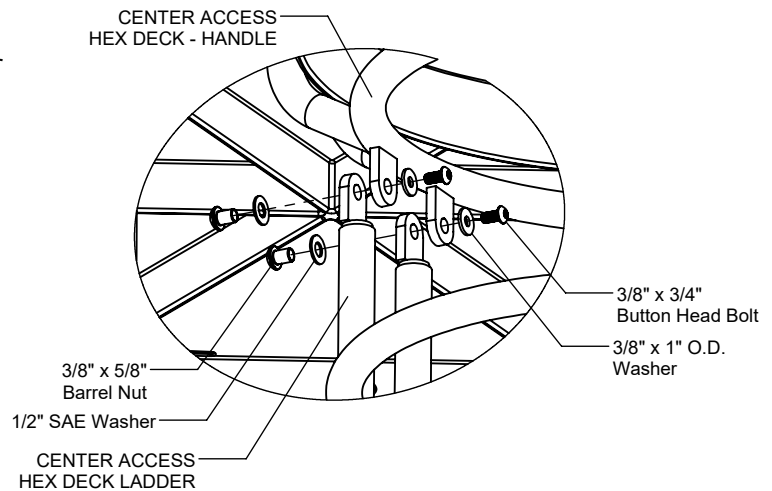


Figure 1.3

Step 9

For Deck to Deck version Only

Attach Center Access Hex Deck Ladder to Center Access Hex Deck Ladder Mount as shown in Figure 4. (See Notes A)

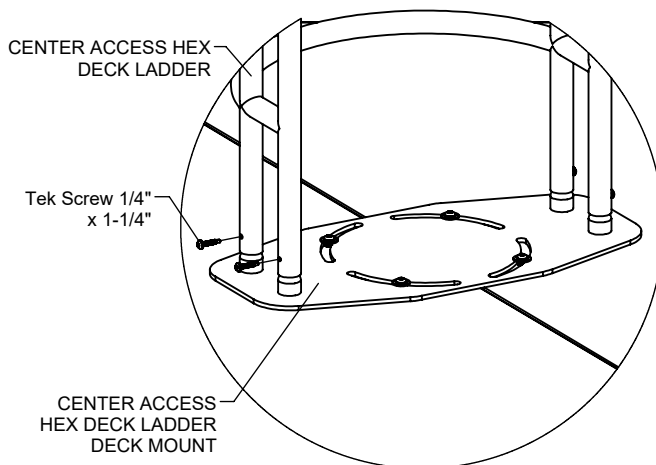


FIGURE 4

Step 10

Fully tighten all fasteners according to the "TIGHTENING TORQUE FOR HARDWARE" section of the Installation Manual.

Step 11

Plumb and level entire component. Pour concrete into footing holes. Allow at least 72 hours to cure before using this equipment. (See Note B)

Step 12

Place required protective surfacing under and around Center Access Climber-Hex. (See Note D)

CENTER ACCESS CLIMBER-HEX INSTALLATION INSTRUCTIONS

R5-12891-HEX

Page 6 of 7

Parts List

CENTER ACCESS CLIMBER IN-GROUND 5'		
Part #	DESCRIPTION	QTY
CF-1081	Center Access Half Hex Deck R5	2
FS-1126-B	Center Access Hex Deck - Barrier	1
FS-12891-5L	Center Access Hex Deck 60" Ladder	1
FS-12891-H	Center Access Hex Deck Ladder Handle	1
FS-12891-LEG	Center Access Hex Deck Ladder Leg	4
GF-7006-B	Mounting Block R5 Bottom	8
GF-7006-T	Mounting Block R5 Top	8
9103032-TR	Bolt Button Head 3/8" x 3/4"	4
9103062-TR	Bolt Button Head 3/8" x 1-1/4"	14
9143112-TR	Bolt Shoulder 3/8" x 2-1/2" BH	8
9271062-TR	1/4" x 1-1/4" Tek Screw	4
9281062-5-TR	Screw Soc HD 1/4" x 1-3/8"	8
9333002	Washer Flat 3/8" x 1" O.D. x .100" thick	32
9345002	Washer Flat SAE 1/2"	20
9413002	Nut Lock 3/8"	14
9443022-TR	Nut Barrel 3/8" x 5/8" BH	4
9443092-TR	Nut Barrel 3/8" x 2" BH	8

CENTER ACCESS CLIMBER IN-GROUND 6'		
Part #	DESCRIPTION	QTY
CF-1081	Center Access Half Hex Deck R5	2
FS-1126-B	Center Access Hex Deck - Barrier	1
FS-12891-6L	Center Access Hex Deck 72" Ladder	1
FS-12891-H	Center Access Hex Deck Ladder Handle	1
FS-12891-LEG	Center Access Hex Deck Ladder Leg	4
GF-7006-B	Mounting Block R5 Bottom	8
GF-7006-T	Mounting Block R5 Top	8
9103032-TR	Bolt Button Head 3/8" x 3/4"	4
9103062-TR	Bolt Button Head 3/8" x 1-1/4"	14
9143112-TR	Bolt Shoulder 3/8" x 2-1/2" BH	8
9271062-TR	1/4" x 1-1/4" Tek Screw	4
9281062-5-TR	Screw Soc HD 1/4" x 1-3/8"	8
9333002	Washer Flat 3/8" x 1" O.D. x .100" thick	32
9345002	Washer Flat SAE 1/2"	20
9413002	Nut Lock 3/8"	14
9443022-TR	Nut Barrel 3/8" x 5/8" BH	4
9443092-TR	Nut Barrel 3/8" x 2" BH	8

Parts List

CENTER ACCESS CLIMBER DECK-DECK 5'		
Part #	DESCRIPTION	QTY
CF-1081	Center Access Half Hex Deck R5	2
FS-1126-B	Center Access Hex Deck - Barrier	1
FS-12891-5L	Center Access Hex Deck 60" Ladder	1
FS-12891-H	Center Access Hex Deck Ladder Handle	1
FS-12891-LDM	Center Access Hex Deck Ladder Deck Mount	1
GF-7006-B	Mounting Block R5 Bottom	8
GF-7006-T	Mounting Block R5 Top	8
9103032-TR	Bolt Button Head 3/8" x 3/4"	4
9103062-TR	Bolt Button Head 3/8" x 1-1/4"	14
9103072-TR	Bolt Button Head 3/8" x 1-1/2"	4
9143112-TR	Bolt Shoulder 3/8" x 2-1/2" BH	8
9271062-TR	1/4" x 1-1/4" Tek Screw	4
9281062-5-TR	Screw Soc HD 1/4" x 1-3/8"	8
9333002	Washer Flat 3/8" x 1" O.D. x .100" thick	40
9345002	Washer Flat SAE 1/2"	20
9413002	Nut Lock 3/8"	18
9443022-TR	Nut Barrel 3/8" x 5/8" BH	4
9443092-TR	Nut Barrel 3/8" x 2" BH	8

CENTER ACCESS CLIMBER DECK-DECK 6'		
Part #	DESCRIPTION	QTY
CF-1081	Center Access Half Hex Deck R5	2
FS-1126-B	Center Access Hex Deck - Barrier	1
FS-12891-6L	Center Access Hex Deck 72" Ladder	1
FS-12891-H	Center Access Hex Deck Ladder Handle	1
FS-12891-LDM	Center Access Hex Deck Ladder Deck Mount	1
GF-7006-B	Mounting Block R5 Bottom	8
GF-7006-T	Mounting Block R5 Top	8
9103032-TR	Bolt Button Head 3/8" x 3/4"	4
9103062-TR	Bolt Button Head 3/8" x 1-1/4"	14
9103072-TR	Bolt Button Head 3/8" x 1-1/2"	4
9143112-TR	Bolt Shoulder 3/8" x 2-1/2" BH	8
9271062-TR	1/4" x 1-1/4" Tek Screw	4
9281062-5-TR	Screw Soc HD 1/4" x 1-3/8"	8
9333002	Washer Flat 3/8" x 1" O.D. x .100" thick	40
9345002	Washer Flat SAE 1/2"	20
9413002	Nut Lock 3/8"	18
9443022-TR	Nut Barrel 3/8" x 5/8" BH	4
9443092-TR	Nut Barrel 3/8" x 2" BH	8



www.playcraftsystems.com
For Customer Service Call
800.333.8519 (U.S.A.) or 541.955.9199 (International)

Rev A
11/1/2021

CENTER ACCESS CLIMBER-HEX INSTALLATION INSTRUCTIONS

R5-12891-HEX
Page 7 of 7

Parts List

CENTER ACCESS CLIMBER SURFACE MOUNT 5'		
Part #	DESCRIPTION	QTY
CF-1081	Center Access Half Hex Deck R5	2
FS-1126-B	Center Access Hex Deck - Barrier	1
FS-12891-5L	Center Access Hex Deck 60" Ladder	1
FS-12891-H	Center Access Hex Deck Ladder Handle	1
FS-12891-LEG-SM	Center Access Hex Deck Ladder Leg - Surface Mount	1
GF-7006-B	Mounting Block R5 Bottom	8
GF-7006-T	Mounting Block R5 Top	8
9103032-TR	Bolt Button Head 3/8" x 3/4"	4
9103062-TR	Bolt Button Head 3/8" x 1-1/4"	14
9143112-TR	Bolt Shoulder 3/8" x 2-1/2" BH	8
9271062-TR	1/4" x 1-1/4" Tek Screw	4
9281062-5-TR	Screw Soc HD 1/4" x 1-3/8"	8
9333002	Washer Flat 3/8" x 1" O.D. x .100" thick	32
9345002	Washer Flat SAE 1/2"	20
9413002	Nut Lock 3/8"	14
9443022-TR	Nut Barrel 3/8" x 5/8" BH	4
9443092-TR	Nut Barrel 3/8" x 2" BH	8

CENTER ACCESS CLIMBER SURFACE MOUNT 6'		
Part #	DESCRIPTION	QTY
CF-1081	Center Access Half Hex Deck R5	2
FS-1126-B	Center Access Hex Deck - Barrier	1
FS-12891-6L	Center Access Hex Deck 72" Ladder	1
FS-12891-H	Center Access Hex Deck Ladder Handle	1
FS-12891-LEG-SM	Center Access Hex Deck Ladder Leg - Surface Mount	1
GF-7006-B	Mounting Block R5 Bottom	8
GF-7006-T	Mounting Block R5 Top	8
9103032-TR	Bolt Button Head 3/8" x 3/4"	4
9103062-TR	Bolt Button Head 3/8" x 1-1/4"	14
9143112-TR	Bolt Shoulder 3/8" x 2-1/2" BH	8
9271062-TR	1/4" x 1-1/4" Tek Screw	4
9281062-5-TR	Screw Soc HD 1/4" x 1-3/8"	8
9333002	Washer Flat 3/8" x 1" O.D. x .100" thick	32
9345002	Washer Flat SAE 1/2"	20
9413002	Nut Lock 3/8"	14
9443022-TR	Nut Barrel 3/8" x 5/8" BH	4
9443092-TR	Nut Barrel 3/8" x 2" BH	8

Specifications

CENTER ACCESS HEX DECK R5:

Shall be fabricated using punched, formed, and welded 12 gauge sheet steel and shall be Play-Tuff™ coated after fabrication.

CENTER ACCESS HEX DECK - BARRIER:

Shall be fabricated using Ø1.315" 12 gauge steel tubing and 10 gauge HR sheet steel and will have a multi-stage baked-on powder coat finish.

CENTER ACCESS HEX DECK - HANDLE AND LADDER:

Shall be fabricated using Ø1.315" 12 gauge steel tubing, 3/8" HR sheet steel, 10 gauge HR sheet steel, 3/8" Tabs, and 3/16" Caps and will have a multi-stage baked-on powder coat finish.

CENTER ACCESS HEX DECK - LADDER LEG:

Shall be fabricated using Ø1.315" 12 gauge steel tubing and 5/8" HR round bar and will have a multi-stage baked-on powder coat finish.

CENTER ACCESS HEX DECK LADDER DECK MOUNT & LADDER LEG SURFACE MOUNT:

Shall be fabricated using Ø1.315" 12 gauge steel tubing and 1/4" HR sheet steel and will have a multi-stage baked-on powder coat finish.

MOUNTING BLOCKS:

Shall be two-part and precision die-cast from a high strength aluminum alloy and will have a multi-stage baked-on powder coat finish.

HARDWARE:

Shall be stainless steel, zinc/nickel plated or galvanized as required to resist rust and corrosion.

Maintenance

Periodically tighten all screws, bolts and nuts. A periodic inspection of all parts is necessary. If a part is broken or worn, replace immediately. For general maintenance please refer to our Playground Maintenance Manual.



www.playcraftsystems.com
For Customer Service Call
800.333.8519 (U.S.A.) or 541.955.9199 (International)

Rev A
11/1/2021