

Assembly View

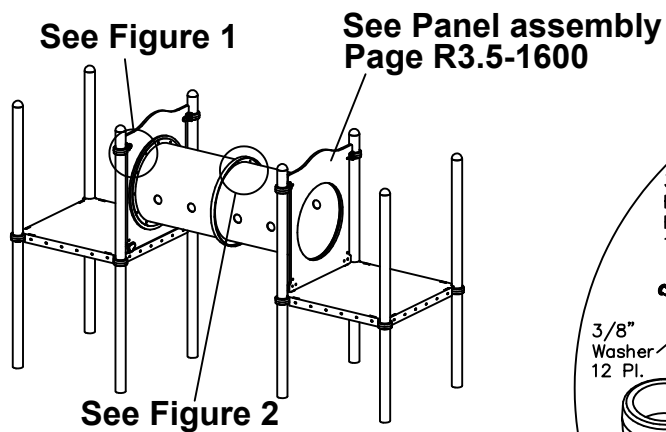


Figure 1

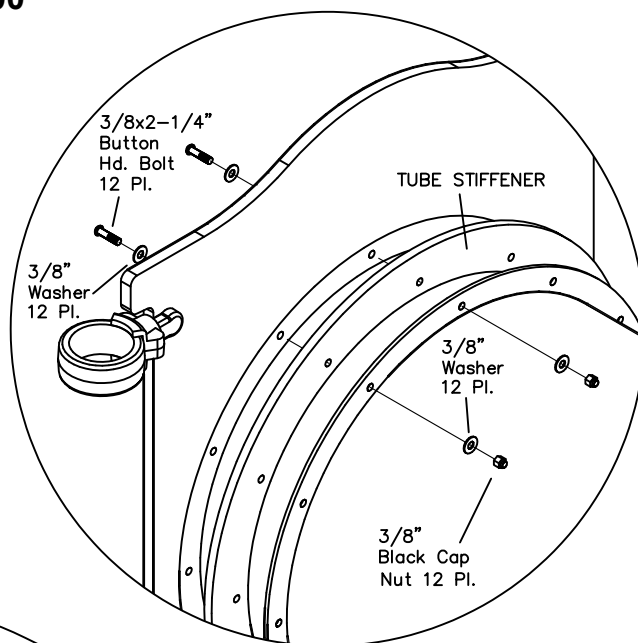
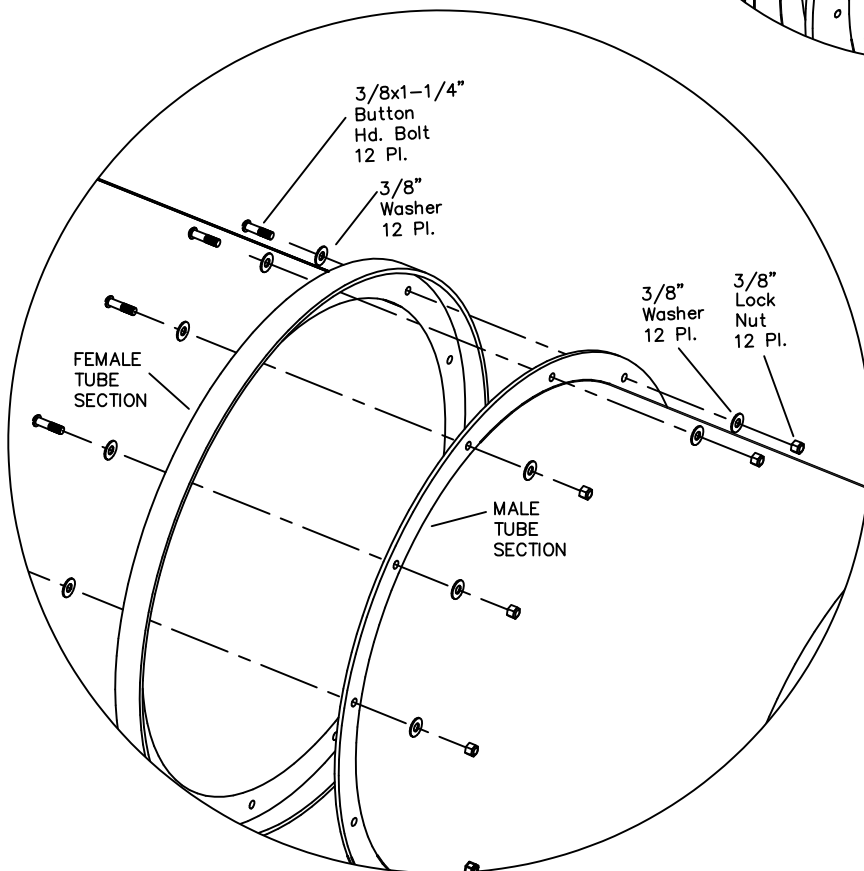


Figure 2



Parts List

QTY.	DESCRIPTION	PART #
1	Female Tube Section	(varies)
1	Male Tube Section	(varies)
2	Panel Round	R35-1600
2	Tube Stiffener Sets	4465
12	3/8 x 1-1/4" Button Hd. Bolts	9103062-TR
24	3/8 x 2-1/4" Button Hd. Bolts	9103102-TR
72	3/8" Washers	9333002
12	3/8" Lock Nuts	9413002
24	3/8" Black Cap Nuts	9463160-BLK

Specifications

CRAWL TUBE:

Shall be constructed of a UV-stabilized, rotationally molded, linear, low density polyethylene. All tube sections are single-wall construction with an average wall thickness of .250". Overlapping flanges help protect the user from coming in contact with the connecting hardware. Various configurations are available depending upon the components used.

CRAWL TUBE STIFFENER:

Shall be fabricated from 3/4" High-Density Plastic.

HARDWARE:

Shall be zinc/nickel plated, galvanized or stainless steel as required to resist rust and corrosion.

Maintenance

Periodically tighten all screws, bolts and nuts.
A periodic inspection of all parts is necessary.
If a part is broken or worn, replace immediately.

Installation

Notes:

(A) See panel assembly page R3.5-1600 for installation of panels.

Step 1.

Attach the Tube Sections to the panels using the hardware shown in Figure 1.

Step 2.

Attach each panel to their respective decks using the hardware shown on the panel assembly page R3.5-1600.

Step 3.

Connect the two Tube Sections together using the hardware shown in Figure 2.

Step 4.

Check to ensure that the panels have been installed square, level and plum to the deck faces.

Step 5.

Fully tighten all fasteners.

