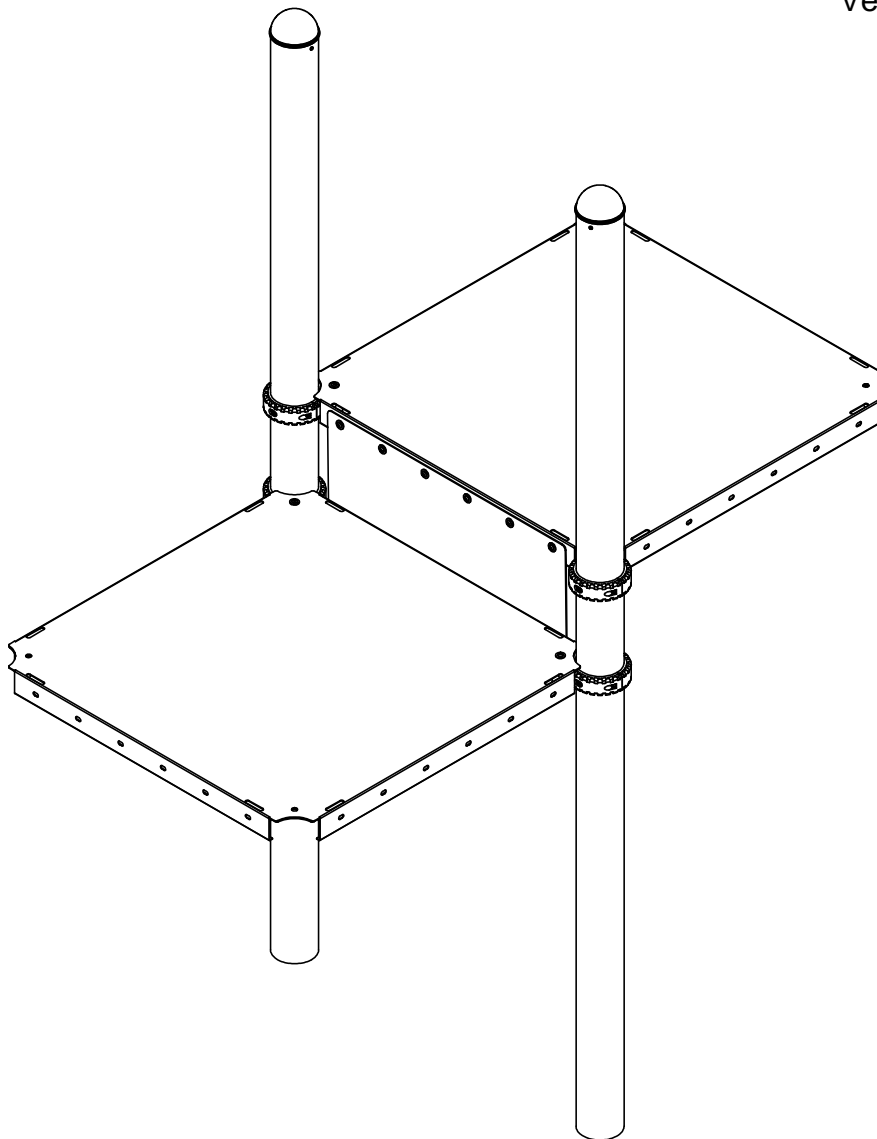


IMPORTANT NOTES: Read First

(A) Use liquid thread lock (such as Loctite®) with all threaded hardware. **Important:** Liquid thread lock (prior to curing) helps to eliminate the common problem of "thread seizure" in stainless steel hardware by serving as a lubricant during assembly.

(B) Fillers must be installed where there is a space between 3-1/2" and 9" to prevent head entrapments.

FIGURE 1
Vertical Deck Filler



NOTE: 12" Vertical Deck Filler shown on R5 deck assembly. other configurations may vary slightly, but do not affect the assembly.

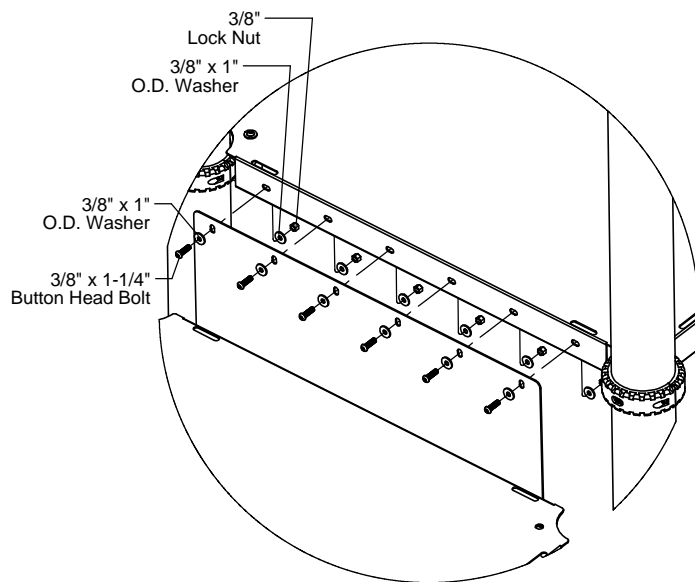


Figure 2

Step 1

Attach the corresponding Vertical Deck Filler to the decks as shown in Figure 2 and 3. (See Note A)

Step 2

Fully tighten all fasteners according to the "TIGHTENING TORQUE FOR HARDWARE" section of the Installation Manual.

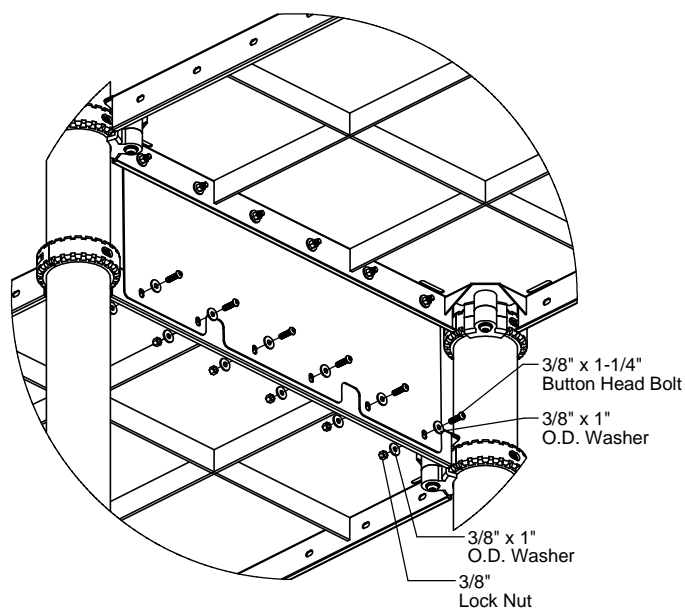


Figure 3

Specifications

VERTICAL DECK FILLERS:

Shall be fabricated from 12 gauge sheet steel. The Vertical Deck Fillers have a multi-stage baked-on powder coat finish.

HARDWARE:

Shall be stainless steel, zinc/nickel plated or galvanized as required to resist rust and corrosion.

Parts List

Part #	DESCRIPTION	QTY.
Varies	Vertical Deck Filler	1
9333002	Washer Flat 3/8" x 1" O.D. x .100" thick	24
9103062-TR	Bolt Button Head 3/8" x 1-1/4"	12
9413002	Nut Lock 3/8"	12

Maintenance

Periodically tighten all screws, bolts and nuts. A periodic inspection of all parts is necessary. If a part is broken or worn, replace immediately. For general maintenance please refer to our Playground Maintenance Manual.



Manufactured by Krauss Craft, Inc.
www.playcraftsystems.com

For Customer Service Call
800.333.8519 (U.S.A.) or
541.955.9199 (International)

Rev E
8/18/2009