

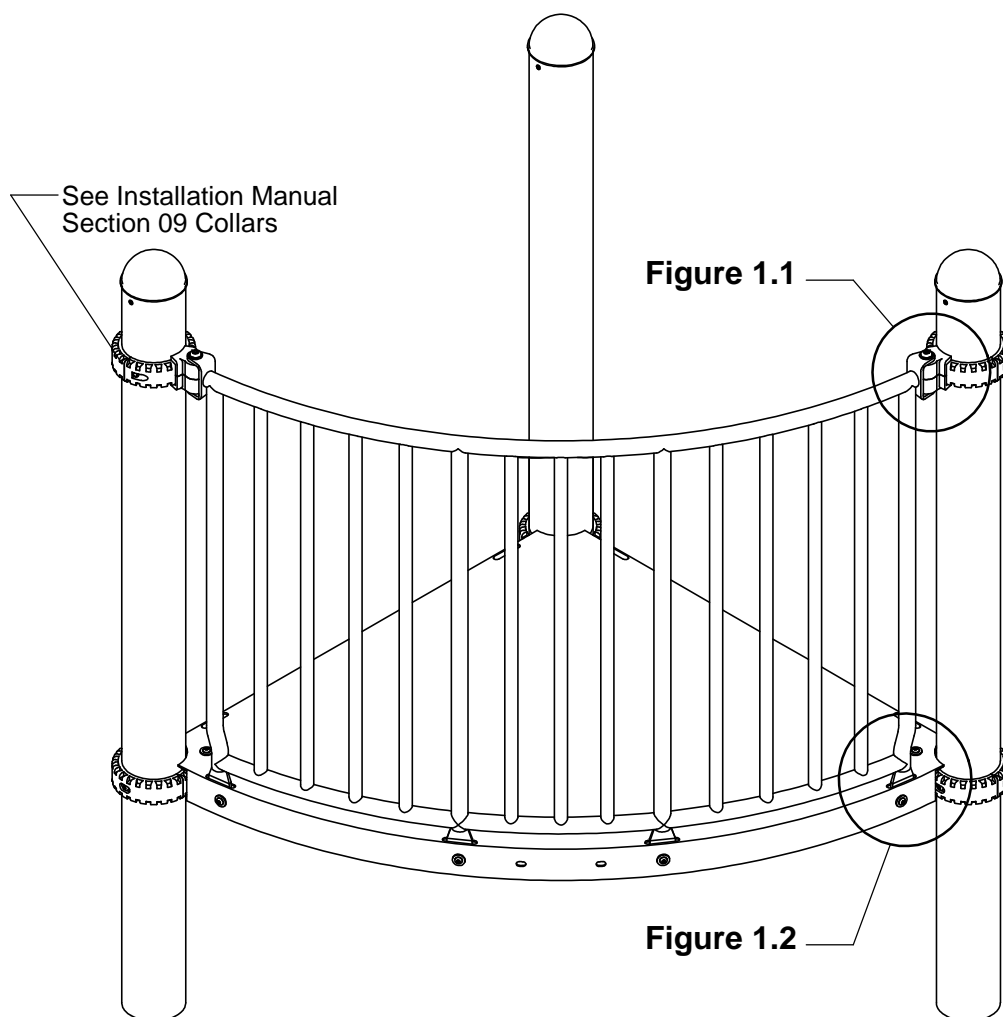
IMPORTANT NOTES: Read First

(A) Use liquid thread lock (such as Loctite®) with all threaded hardware. **Important:** Liquid thread lock (prior to curing helps to eliminate the common problem of "thread seizure" in stainless steel hardware by serving as a lubricant during assembly.

(B) Refer to the Installation Manual for 09 Collars assembly instructions.

(C) Collars are located 39" from top of deck to top of collar.

FIGURE 1
Curved Wall



NOTE: R5 Deck shown. R3.5 will vary slightly, but does not affect assembly.

Step 1

Locate and attach collars to support posts at height given in Elevation View. (See Notes B & C).

* Height shown from top of deck to top of collar.

Elevation View

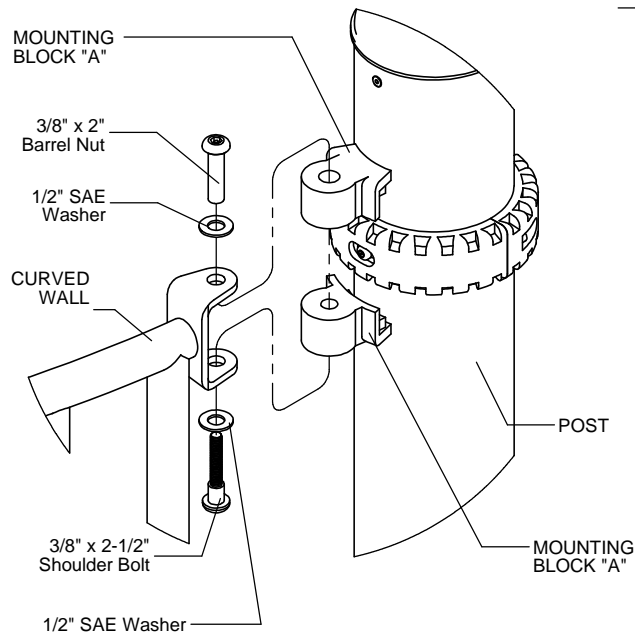
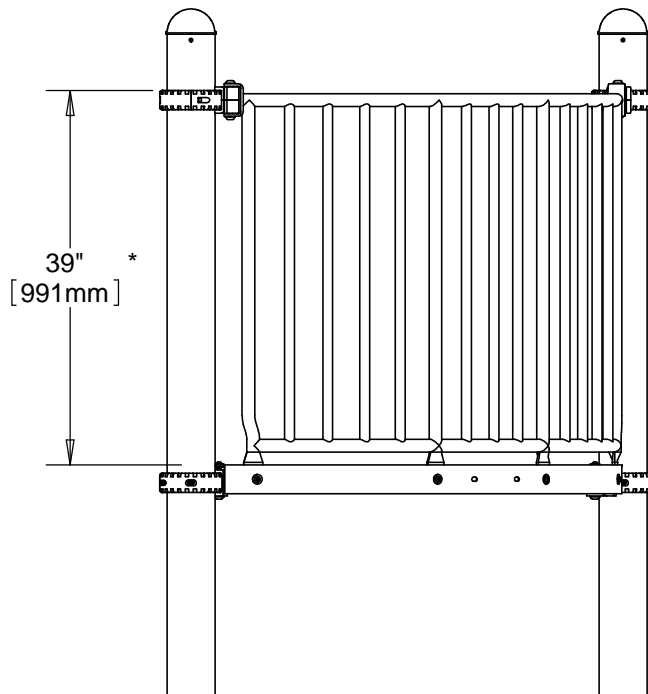


Figure 1.1

Step 2

Set Curved Wall into the deck and attach to posts as shown in Figure 1.1. (See Note A)

NOTE: R3.5 assembly uses Mounting Block 3.
R5 assembly uses Mounting Block "A".

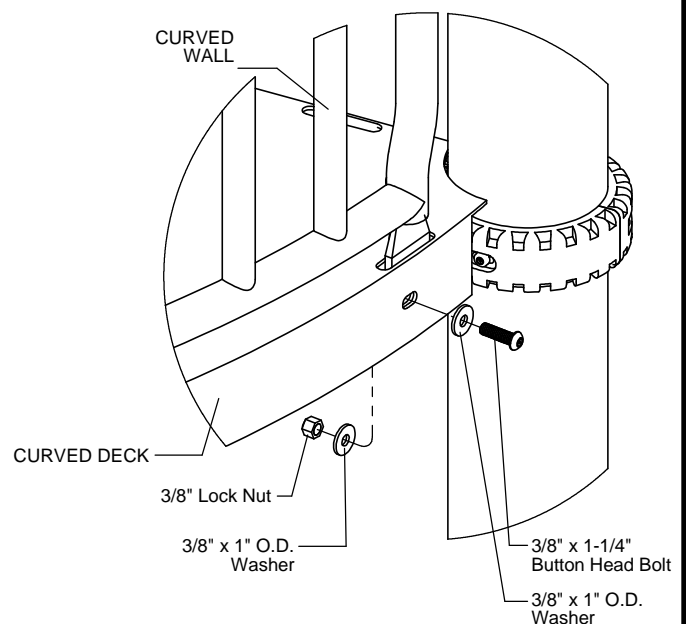


Figure 1.2

Step 3

Attach Curved Wall to the deck as shown in Figure 1.2. (See Note A)

Step 4

Fully tighten all fasteners according to the "TIGHTENING TORQUE FOR HARDWARE" section of the Installation Manual.

CURVED WALL INSTALLATION INSTRUCTIONS

1328
Page 3 of 3

R3.5 Parts List

Part #	DESCRIPTION	QTY
FS-1328-R35	Curved Wall 3.5	1
GG-8112	R3.5 Mounting Block 3	4
9103062-TR	Bolt Button Head 3/8" x 1-1/4"	4
9143112-TR	Bolt Shoulder 3/8" x 2-1/2" BH	2
9333002	Washer Flat 3/8" x 1" O.D. x .100" thick	8
9345002	Washer Flat SAE 1/2"	4
9413002	Nut Lock 3/8"	4
9443092-TR	Nut Barrel 3/8" x 2" BH	2

WHEEL MOUNT OPTION

Part #	DESCRIPTION	QTY
FS-1328-R35MT	Curved Wall w/ Mount R3.5	1
GG-8112	R3.5 Mounting Block 3	4
9103062-TR	Bolt Button Head 3/8" x 1-1/4"	4
9143112-TR	Bolt Shoulder 3/8" x 2-1/2" BH	2
9333002	Washer Flat 3/8" x 1" O.D. x .100" thick	8
9345002	Washer Flat SAE 1/2"	4
9413002	Nut Lock 3/8"	4
9443092-TR	Nut Barrel 3/8" x 2" BH	2

R5 Parts List

Part #	DESCRIPTION	QTY
FS-1328-R	Wall Curved R5	1
GF-7006-A	Mounting Block "A" R5	4
9103062-TR	Bolt Button Head 3/8" x 1-1/4"	4
9143112-TR	Bolt Shoulder 3/8" x 2-1/2" BH	2
9333002	Washer Flat 3/8" x 1" O.D. x .100" thick	8
9345002	Washer Flat SAE 1/2"	4
9413002	Nut Lock 3/8"	4
9443092-TR	Nut Barrel 3/8" x 2" BH	2

WHEEL MOUNT OPTION

Part #	DESCRIPTION	QTY
FS-1328-RMT	Curved Wall w/ Mount R5	1
GF-7006-A	Mounting Block "A" R5	4
9103062-TR	Bolt Button Head 3/8" x 1-1/4"	4
9143112-TR	Bolt Shoulder 3/8" x 2-1/2" BH	2
9333002	Washer Flat 3/8" x 1" O.D. x .100" thick	8
9345002	Washer Flat SAE 1/2"	4
9413002	Nut Lock 3/8"	4
9443092-TR	Nut Barrel 3/8" x 2" BH	2

Specifications

CURVED WALL:

Shall be fabricated from 1.315" O.D. 12 gauge steel tubing with 1.029" O.D. 14 gauge welded vertical rails. Curved Wall has a multi-stage baked-on powder coat finish.

CURVED WALL with WHEEL MOUNT PLATE:

Shall be fabricated from 1.315" O.D. 12 gauge steel tubing with 1.029" O.D. 14 gauge welded vertical rails. A .188" thick mounting plate shall be welded to the vertical rails. Curved Wall has a multi-stage baked-on powder coat finish.

MOUNTING BLOCKS:

Shall be two-part and precision die-cast from a high strength aluminum alloy. The Mounting Blocks have a multi-stage baked-on powder coat finish.

HARDWARE:

Shall be stainless steel, zinc/nickel plated or galvanized as required to resist rust and corrosion.

Maintenance

Periodically tighten all screws, bolts and nuts. A periodic inspection of all parts is necessary. If a part is broken or worn, replace immediately. For general maintenance please refer to our Playground Maintenance Manual.



Manufactured by Krauss Craft, Inc.
www.playcraftsystems.com

For Customer Service Call
800.333.8519 (U.S.A.) or
541.955.9199 (International)

Rev D
7/21/2011