

## IMPORTANT NOTES: Read First

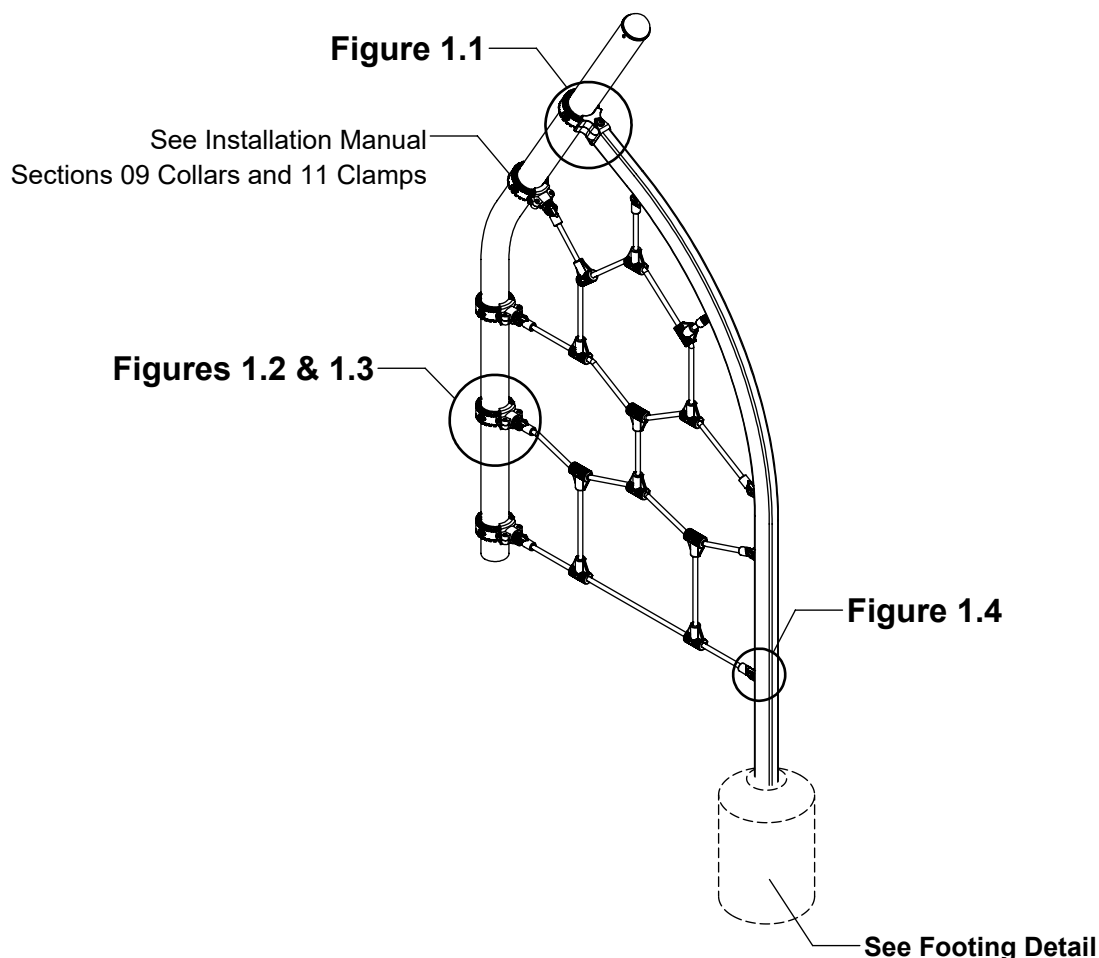
(A) Use liquid thread lock (such as Loctite®) with all threaded hardware. **Important:** Liquid thread lock (prior to curing) helps to eliminate the common problem of "thread seizure" in stainless steel hardware by serving as a lubricant during assembly.

(B) Do not pour concrete until the equipment is completely assembled, leveled and plumbed. Concrete must be allowed to cure completely before using the equipment (at least 72 hours).

(C) Refer to Installation Manual for 09 Collars and 11 Socket Clamps installation instructions.

(D) An appropriate energy absorbing safety surface is required under and around all playground equipment. Loose fill protective surfacing is shown only as an example for the purpose of this assembly instruction. Other surfacing material may vary in thickness and/or compression depths. See free publication - The Handbook for Public Playground Safety, Publication #325 at [www.cpsc.gov](http://www.cpsc.gov) for the surfacing appropriate for the fall height of the equipment or consult your surfacing supply representative.

**FIGURE 1**  
NFuse Hex Net Extension



### Step 1

Refer to Footing Layout and mark footing hole locations. Dig (1) Ø 12" footing hole. Refer to Footing Detail for depth and details. Locate and attach collars at heights shown in Elevation View. (See Note B)

**IMPORTANT:** For areas with soft soil conditions, larger footings may be required.

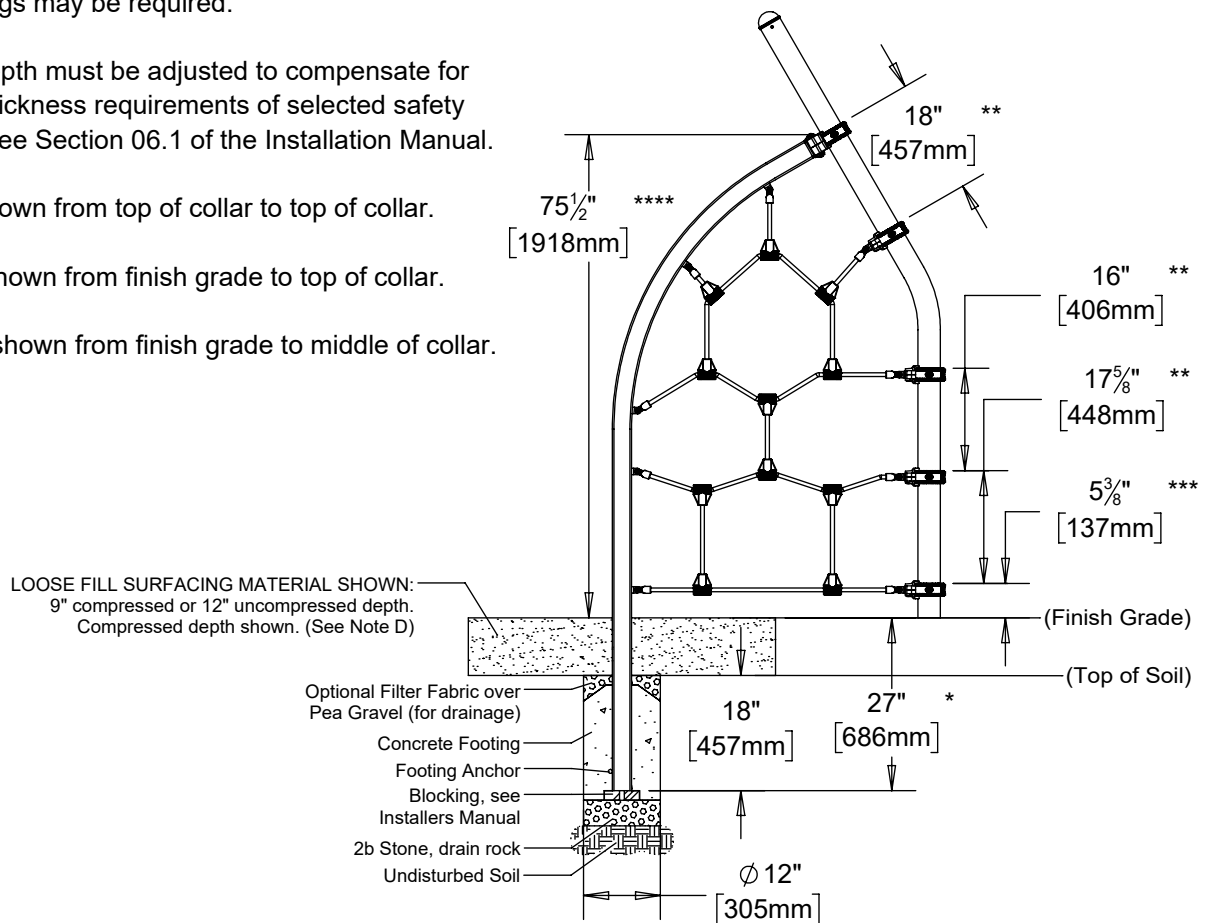
\* Footing depth must be adjusted to compensate for the depth/thickness requirements of selected safety surfacing. See Section 06.1 of the Installation Manual.

\*\* Height shown from top of collar to top of collar.

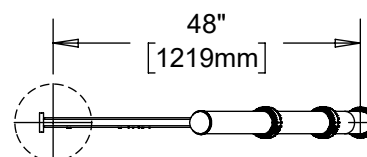
\*\*\* Height shown from finish grade to top of collar.

\*\*\*\* Height shown from finish grade to middle of collar.

**Elevation View - Footing Detail**



**Top View - Footing Layout**



### Step 2

Attach NFuse Frame to Post as shown in Figure 1.1. (See Note A)

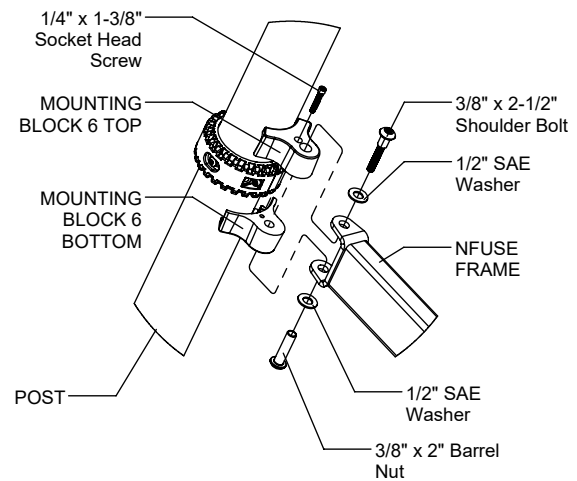


Figure 1.1

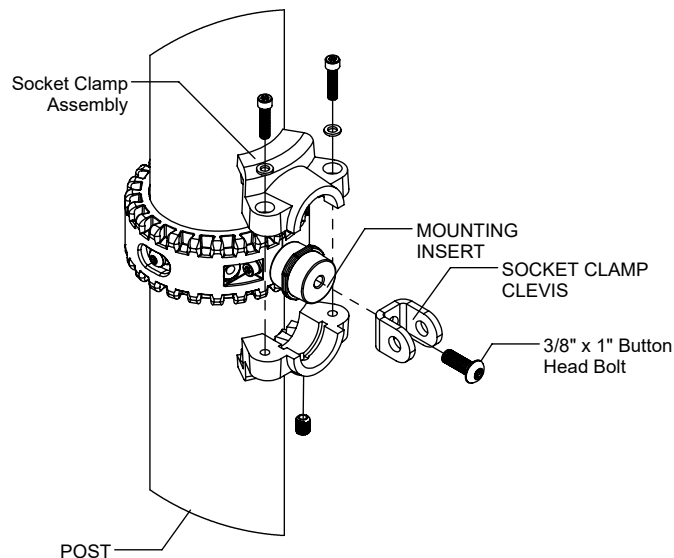


Figure 1.2

### Step 3

Attach Socket Clamp Clevis to Post as shown in Figure 1.2. (See Notes A & C)

**NOTE:** 4 Places

### Step 4

Attach Net Ferrules to corresponding Socket Clamp Clevises as shown in Figure 1.3. (See Note A)

**NOTE:** 4 Places

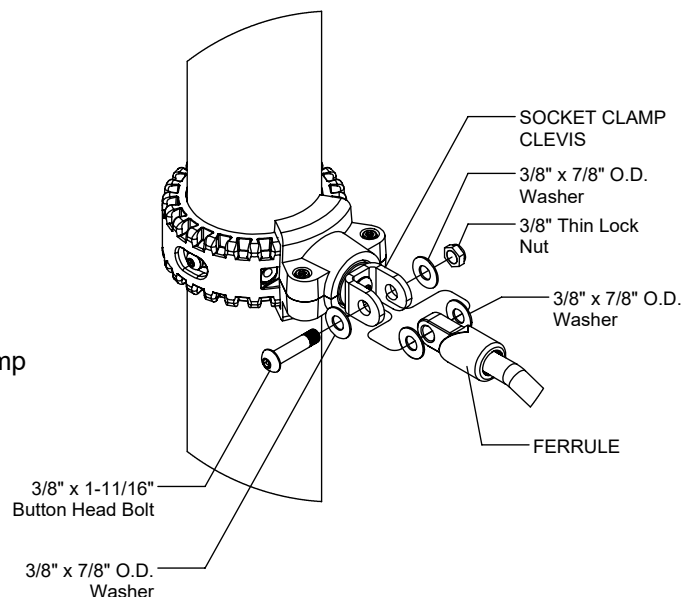


Figure 1.3

## Step 5

Attach remaining Ferrules to NFuse Frame as shown in Figure 1.4. (See Note A)

**NOTE:** 5 Places

## Step 6

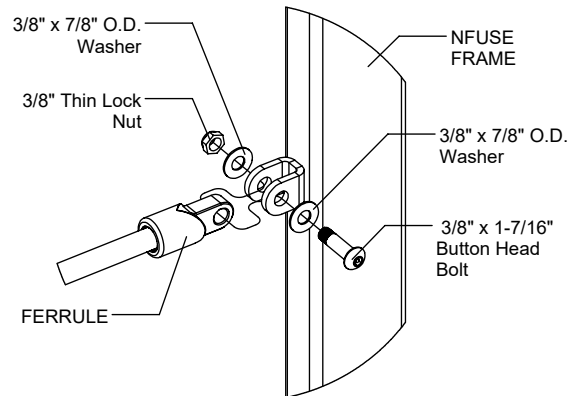
Fully tighten all fasteners according to the "TIGHTENING TORQUE FOR HARDWARE" section of the Installation Manual.

## Step 7

Plumb and level entire component. Pour concrete into footing hole. Allow at least 72 hours to cure before using this equipment. (See Note B)

## Step 8

Place required protective surfacing under and around NFuse Hex Net Extension. (See Note D)



**Figure 1.4**

## Parts List

IN-GROUND		
Part #	DESCRIPTION	QTY
BE-1105	Socket Clamp Rope Clevis	4
FS-5301	NFuse Hex Net Extension - Frame Rail	1
GE-7015	Mounting Insert	4
GG-8125	Mounting Block 6 Top R3.5	1
GG-8127	Mounting Block 6 Bottom R3.5	1
HM-0005	NFuse Hex Net Extension - Net	1
HS-1001-R35	Socket Clamp Set R3.5	4
9103052-TR	Bolt Button Head 3/8" x 1"	4
9103200-TR	Bolt Button Head 3/8" x 1-7/16"	5
9103210-TR	Bolt Button Head 3/8" x 1-11/16"	4
9143112-TR	Bolt Shoulder 3/8" x 2-1/2" BH	1
9281062-5-TR	Screw Soc HD 1/4" x 1-3/8"	1
9333042	Washer Flat 3/8" x 7/8" O.D.	26
9345002	Washer Flat SAE 1/2"	2
9423002	Nut Lock Thin 3/8"	9
9443092-TR	Nut Barrel 3/8" x 2" BH	1

## Specifications

SURFACE MOUNT		
Part #	DESCRIPTION	QTY
BE-1105	Socket Clamp Rope Clevis	4
FS-5301-SM	NFuse Hex Net Extension - Frame Rail - Surface Mount	1
GE-7015	Mounting Insert	4
GG-8125	Mounting Block 6 Top R3.5	1
GG-8127	Mounting Block 6 Bottom R3.5	1
HM-0005	NFuse Hex Net Extension - Net	1
HS-1001-R35	Socket Clamp Set R3.5	4
9103052-TR	Bolt Button Head 3/8" x 1"	4
9103200-TR	Bolt Button Head 3/8" x 1-7/16"	5
9103210-TR	Bolt Button Head 3/8" x 1-11/16"	4
9143112-TR	Bolt Shoulder 3/8" x 2-1/2" BH	1
9281062-5-TR	Screw Soc HD 1/4" x 1-3/8"	1
9333042	Washer Flat 3/8" x 7/8" O.D.	26
9345002	Washer Flat SAE 1/2"	2
9423002	Nut Lock Thin 3/8"	9
9443092-TR	Nut Barrel 3/8" x 2" BH	1

## Specifications

### **SOCKET CLAMP ROPE CLEVIS:**

Shall be precision cut and formed using 3/16" stainless steel.

### **NFUSE HEX NET EXTENSION - FRAME RAIL:**

Shall be fabricated using 1-1/2" x 3" x .120" steel rectangular tubing with welded  $\varnothing 5/8$ " steel anchor, 1/4" thick steel clevis, and 3/16" thick steel clevises and will have a multi-stage baked-on powder coat finish.

### **NFUSE HEX NET EXTENSION - FRAME RAIL - SURFACE MOUNT:**

Shall be fabricated using 1-1/2" x 3" x .120" steel rectangular tubing with welded 1/4" thick steel anchor plate, 1/4" thick steel clevis, and 3/16" thick steel clevises and will have a multi-stage baked-on powder coat finish.

### **MOUNTING INSERTS:**

Shall be precision die-cast from a high-strength aluminum alloy.

### **MOUNTING BLOCKS & SOCKET CLAMPS:**

Shall be two-part and precision die-cast from a high strength aluminum alloy and will have a multi-stage baked-on powder coat finish.

### **NFUSE HEX NET EXTENSION - NET:**

Shall be made from 16mm steel-reinforced rope with high-strength copolymer plastic intersection connectors and machined aluminum ferrules.

### **HARDWARE:**

Shall be stainless steel, zinc/nickel plated or galvanized as required to resist rust and corrosion.

## Maintenance

Periodically tighten all screws, bolts and nuts. A periodic inspection of all parts is necessary. If a part is broken or worn, replace immediately. For general maintenance please refer to our Playground Maintenance Manual.