

## IMPORTANT NOTES: Read First

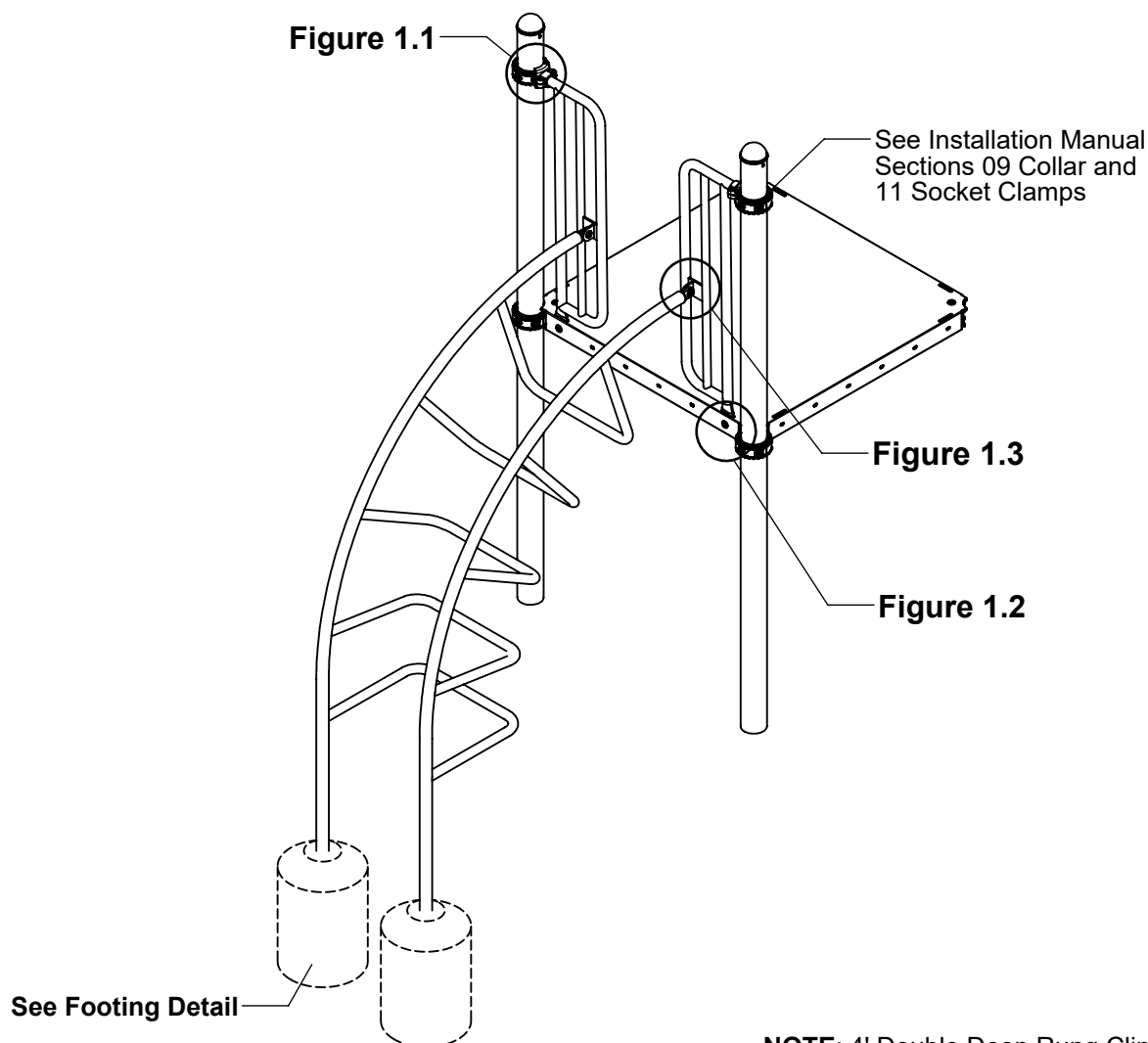
(A) Use liquid thread lock (such as Loctite®) with all threaded hardware. **Important:** Liquid thread lock (prior to curing) helps to eliminate the common problem of "thread seizure" in stainless steel hardware by serving as a lubricant during assembly.

(B) Do not pour concrete until the equipment is completely assembled, leveled and plumbed. Concrete must be allowed to cure completely before using the equipment (at least 72 hours).

(C) Refer to Installation Manual for 09 Collars and 11 Socket Clamps assembly instructions.

(D) Use appropriate compliant protective surfacing and adjust footing depths accordingly. See free publication - The Handbook for Public Playground Safety, Publication #325 at [www.CPSC.gov](http://www.CPSC.gov) for the surfacing appropriate for the fall height of the equipment or consult your surfacing supply representative.

**FIGURE 1**  
Double Deep Rung Climber



**NOTE:** 4' Double Deep Rung Climber R3.5 shown. Other configurations will vary slightly, but does not affect assembly.

## Step 1

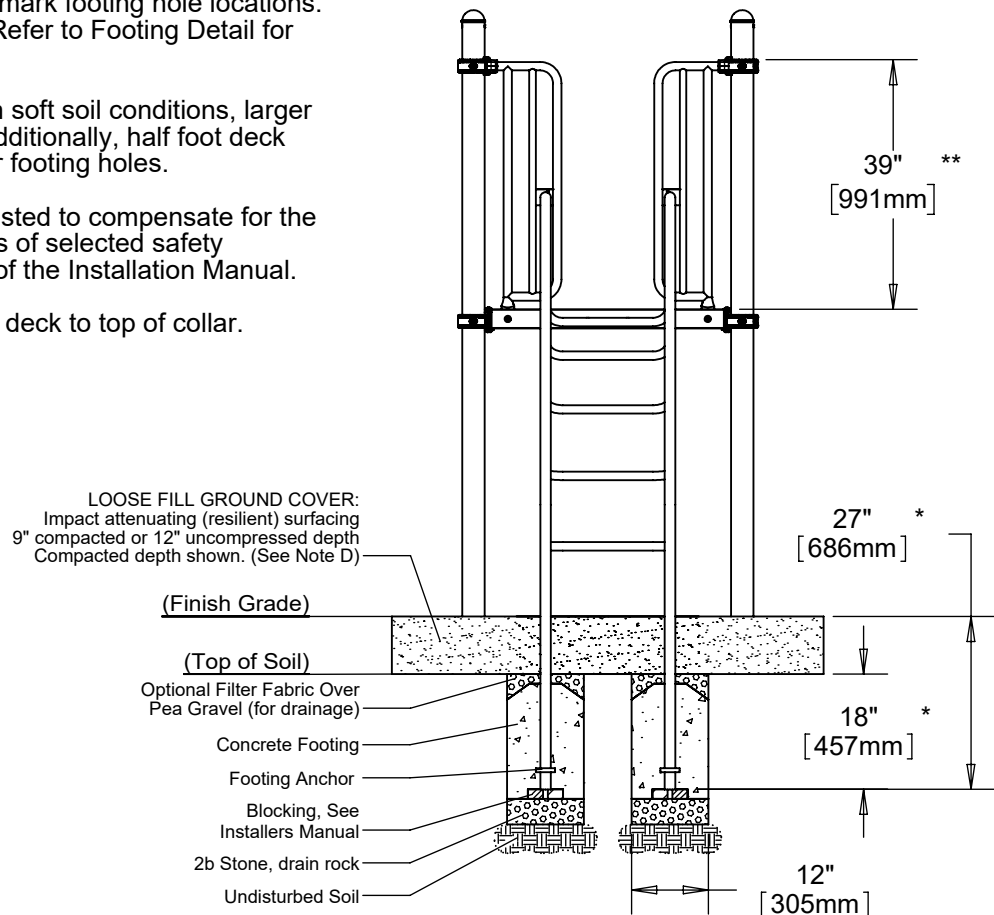
Refer to Footing Layout and mark footing hole locations. Dig (2) Ø 12" footing holes. Refer to Footing Detail for depth and details.

**IMPORTANT:** For areas with soft soil conditions, larger footings may be required. Additionally, half foot deck heights will require 6" deeper footing holes.

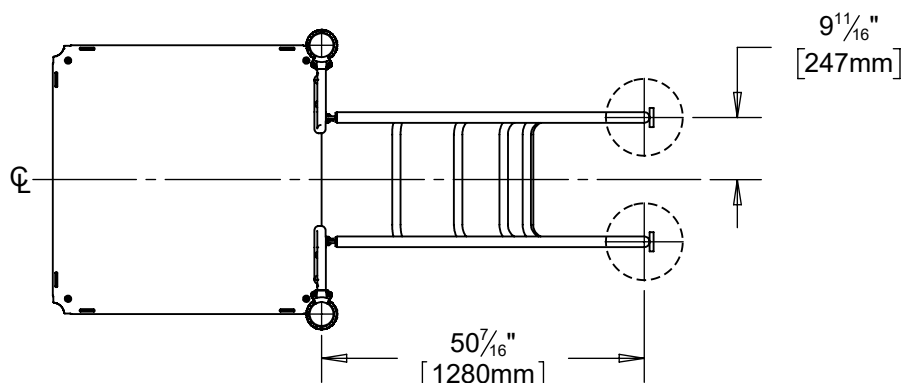
\* Footing depth must be adjusted to compensate for the depth/thickness requirements of selected safety surfacing. See Section 06.1 of the Installation Manual.

\*\* Height given is from top of deck to top of collar.

### Footing Detail



### Top View - Footing Layout

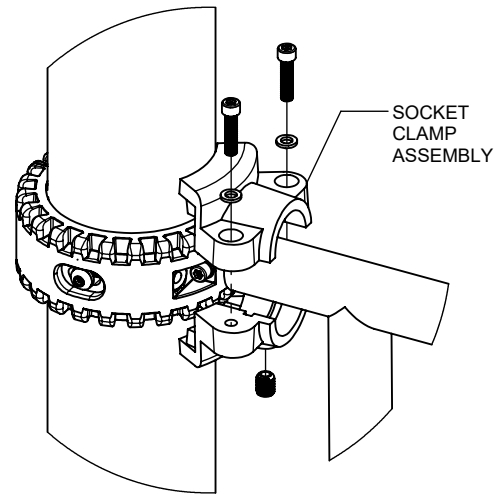


## Step 2

Locate and attach collars at height given in Footing Detail.  
(See Note C)

## Step 3

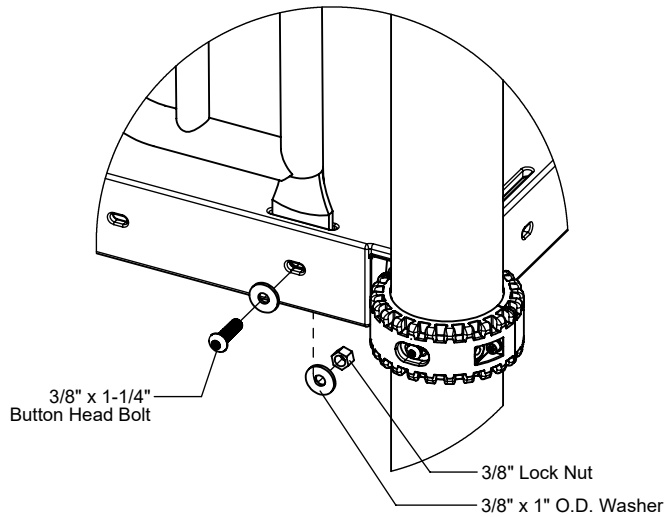
Attach Double Deep Rung Climber Half Walls to collars as shown in Figure 1.1. (See Note C)



**Figure 1.1**

## Step 4

Attach Double Deep Rung Climber Half Walls to deck as shown in Figure 1.2. (See Note A)



**Figure 1.2**

## Step 5

Place Double Deep Rung Climber into footing holes and attach to Double Deep Rung Climber Half Walls as shown in Figure 1.3. (See Note A)

## Step 6

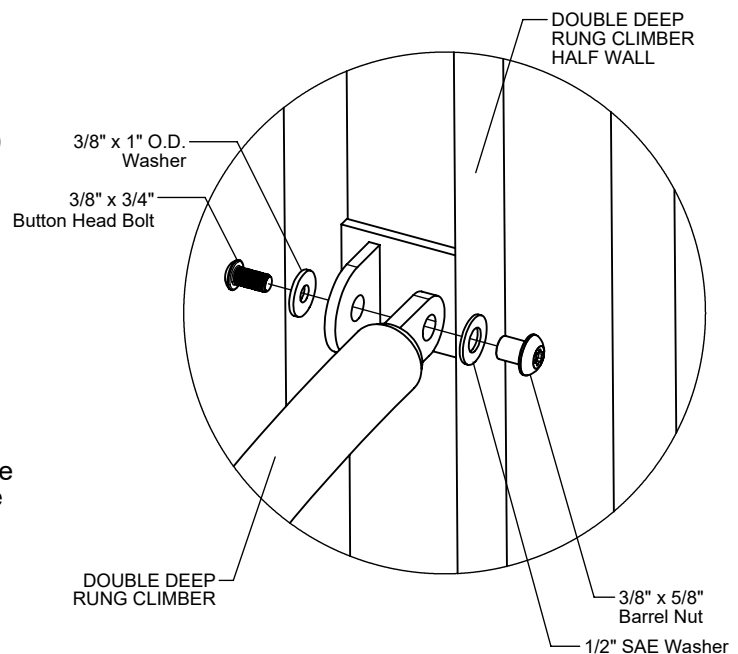
Fully tighten all fasteners according to the "TIGHTENING TORQUE FOR HARDWARE" section of the Installation Manual.

## Step 7

Plumb and level entire component. Pour concrete into footing holes. Allow at least 72 hours to cure before using this equipment. (See Note B)

## Step 8

Place appropriate compliant protective surfacing under and around Double Deep Rung Climber. (See Note D)



**Figure 1.3**

# DOUBLE DEEP RUNG CLIMBER INSTALLATION INSTRUCTIONS

**1275**  
Page 4 of 4

## Parts List

DOUBLE DEEP RUNG CLIMBER R3.5		
Part #	DESCRIPTION	QTY
FS-1275-4	Double Deep Rung Climber 48"	1
FS-1275-R35HW	Double Deep Rung Climber Half Wall R3.5	1
FS-1275-R35HW	Double Deep Rung Climber Half Wall R3.5	1
HS-1001-R35	Socket Clamp Set R3.5	2
9103032-TR	Bolt Button Head 3/8" x 3/4"	2
9103062-TR	Bolt Button Head 3/8" x 1-1/4"	2
9333002	Washer Flat 3/8" x 1" O.D. x .100" thick	6
9345002	Washer Flat SAE 1/2"	2
9413002	Nut Lock 3/8"	2
9443022-TR	Nut Barrel 3/8" x 5/8" BH	2

DOUBLE DEEP RUNG CLIMBER R5		
Part #	DESCRIPTION	QTY
FS-1275-4	Double Deep Rung Climber 48"	1
FS-1275-R5HW	Double Deep Rung Half Wall R5	1
FS-1275-R5HW	Double Deep Rung Half Wall R5	1
HS-1001-R5	Socket Clamp Set R5	2
9103032-TR	Bolt Button Head 3/8" x 3/4"	2
9103062-TR	Bolt Button Head 3/8" x 1-1/4"	2
9333002	Washer Flat 3/8" x 1" O.D. x .100" thick	6
9345002	Washer Flat SAE 1/2"	2
9413002	Nut Lock 3/8"	2
9443022-TR	Nut Barrel 3/8" x 5/8" BH	2

## Specifications

### DOUBLE DEEP RUNG CLIMBER:

Shall be fabricated from 1.660" O.D. 11 gauge steel tubing welded with .375" thick steel tabs and 1.315" O.D. 12 gauge steel rungs and will have a multi-stage baked-on powder coat finish.

### DOUBLE DEEP RUNG CLIMBER HALF WALL:

Shall be fabricated from Ø 1.315" 12 gauge steel tubing and a Ø 1.029" 14 gauge steel tube with a .25" steel plate and a .25" steel tab welded on and will have a multi-stage baked-on powder coat finish.

### SOCKET CLAMPS:

Shall be two-part and precision die-cast from a high strength aluminum alloy and will have a multi-stage baked-on powder coat finish.

### HARDWARE:

Shall be stainless steel, zinc/nickel plated or galvanized as required to resist rust and corrosion.

## Maintenance

Periodically tighten all screws, bolts and nuts. A periodic inspection of all parts is necessary. If a part is broken or worn, replace immediately. For general maintenance please refer to our Playground Maintenance Manual.



www.playcraftsystems.com  
For Customer Service Call  
800.333.8519 (U.S.A.) or 541.955.9199 (International)

**Rev C**  
5/18/2023