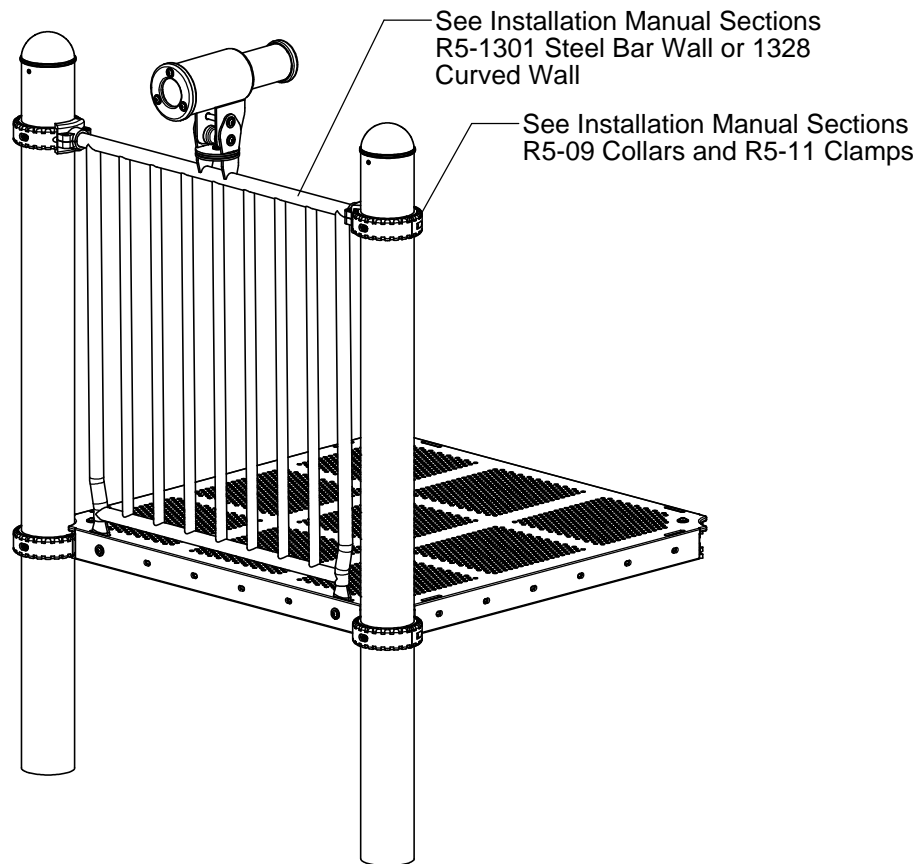


IMPORTANT NOTES: Read First

(A) Use liquid thread lock (such as Loctite®) with all threaded hardware. **Important:** Liquid thread lock (prior to curing) helps to eliminate the common problem of "thread seizure" in stainless steel hardware by serving as a lubricant during assembly.

(B) Refer to Installation Manual for R5-1301 Steel Bar Wall, 1328 Curved Wall, R5-09 Collars and R5-11 Socket Clamps installation instructions.

FIGURE 1
Steel Telescope on Wall



NOTE: S-1830-STL shown. Other configurations will vary slightly, but does not affect assembly.

Step 1 (Factory Assembled)

Press Bearings into Telescope and attach Front Cap and Front Lens to Telescope as shown in Figure 2. (See Note A)

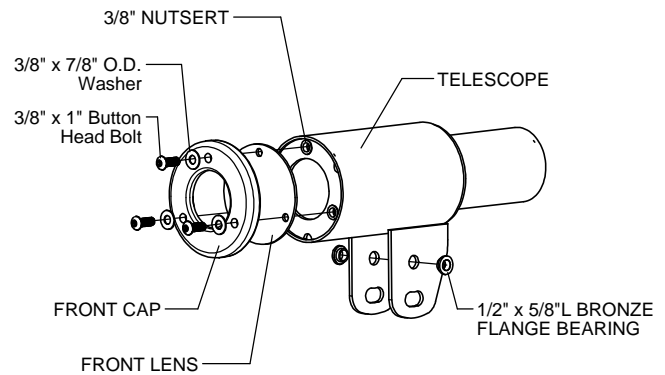


FIGURE 2

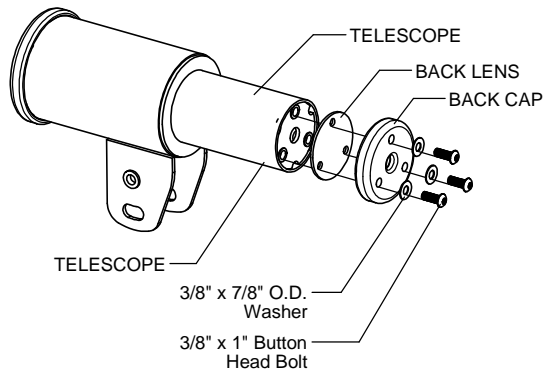


FIGURE 3

Step 3 (Factory Assembled)

Attach Telescope Mount to Steel Wall as shown in Figure 4. (See Note A)

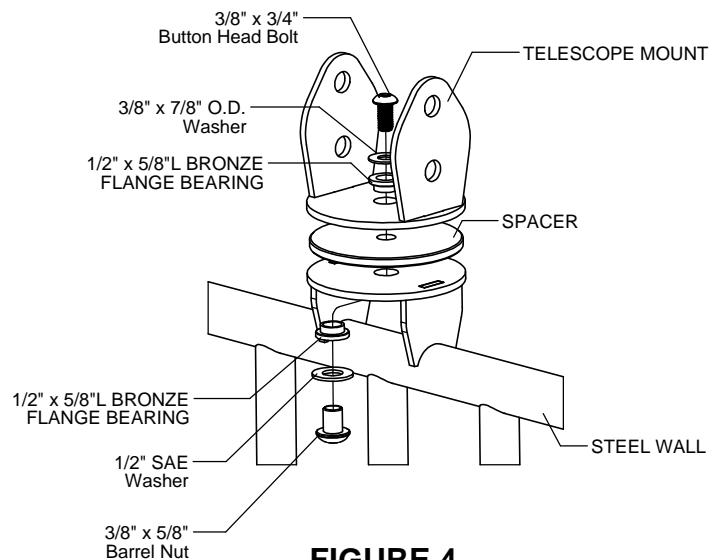


FIGURE 4

Step 4

Attach Telescope to Telescope Mount as shown in Figure 5. (See Note A)

Step 5

Fully tighten all fasteners according to the "TIGHTENING TORQUE FOR HARDWARE" section of the Installation Manual.

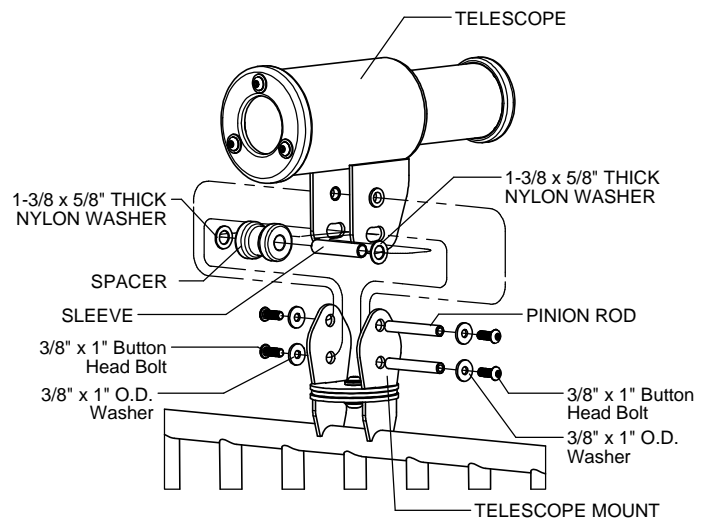


FIGURE 5

Specifications

STEEL TELESCOPE:

Shall be fabricated using 5" O.D. 11 gauge steel tubing with welded 3.5" O.D. 11 gauge steel tubing, and 3/16" thick steel flange, front plate, back plate, and reducer. The Steel Telescope shall have a multi-stage baked-on powder coat finish.

STEEL TELESCOPE WALL R5:

Shall be fabricated using 1.315" O.D. 12 gauge steel tubing with welded 1.029" O.D. 14 gauge steel rungs, and 1/4" thick steel tabs and 3/16" thick steel mounting plate. The Steel Telescope Wall R5 shall have a multi-stage baked-on powder coat finish.

STEEL TELESCOPE CURVED WALL R5:

Shall be fabricated using 1.315" O.D. 12 gauge steel tubing with welded 1.029" O.D. 14 gauge steel rungs, 1/4" thick steel tabs, 3/16" thick steel mounting plate and 3/16" thick steel mounting bracket. The Steel Telescope Curved Wall R5 shall have a multi-stage baked-on powder coat finish.

STEEL TELESCOPE WALL MOUNT:

Shall be fabricated using 3/16" thick steel mounting plate with welded 1/4" thick steel mounting tabs. The Steel Telescope Wall Mount shall have a multi-stage baked-on powder coat finish.

STEEL TELESCOPE CAPS:

Shall be made from high density 3/4" sheet plastic specially formulated for optimum UV stability and color retention.

STEEL TELESCOPE LENSES:

Shall be made from .118" thick polycarbonate.

SOCKET CLAMPS:

Shall be two-part and precision die-cast from a high strength aluminum alloy. The Socket Clamps have a multi-stage baked-on powder coat finish.

HARDWARE:

Shall be stainless steel, zinc/nickel plated or galvanized as required to resist rust and corrosion.

STEEL TELESCOPE ON WALL R5 INSTALLATION INSTRUCTIONS

R5-1830-STL
Page 4 of 4

Parts List

S-1830-STL		
Part #	DESCRIPTION	QTY.
EE-0229	3-1/16" UHMWPE Sleeve	1
HS-1001-R5	Socket Clamp Set R5	2
ID-0011	Chest Press Pinion Rod-Bottom	2
IE-0044	1.75" O.D. x 2" Spacer	1
9103052-TR	Bolt Button Head 3/8" x 1"	4
9103062-TR	Bolt Button Head 3/8" x 1-1/4"	2
9333002	Washer Flat 3/8" x 1" O.D. x .100" thick	8
9367055	1.07" x .645" x .065" Nylon Washer	2
9413002	Nut Lock 3/8"	2

S-1830-CRVSTL		
Part #	DESCRIPTION	QTY.
EE-0229	3-1/16" UHMWPE Sleeve	1
GF-7006-B	Mounting Block R5 Bottom	2
GF-7006-T	Mounting Block R5 Top	2
ID-0011	Chest Press Pinion Rod-Bottom	2
IE-0044	1.75" O.D. x 2" Spacer	1
9103052-TR	Bolt Button Head 3/8" x 1"	4
9103062-TR	Bolt Button Head 3/8" x 1-1/4"	4
9103112-TR	Bolt Button Head 3/8" x 2-1/2"	2
9281062-5	1/4" x 1-3/8" Socket Head Screw	2
9333002	Washer Flat 3/8" x 1" O.D. x .100" thick	14
9345002	Washer Flat SAE 1/2"	2
9367055	1.07" x .645" x .065" Nylon Washer	2
9413002	Nut Lock 3/8"	4
9443092-TR	Nut Barrel 3/8" x 2" BH	2

Assembled Parts List

S-1830-STL		
Part #	DESCRIPTION	QTY.
EE-0222	Steel Telescope Back Lens	1
EE-0223	Steel Telescope Front Lens	1
EE-0230	Steel Telescope Back Cap	1
EE-0231	Steel Telescope Front Cap	1
EE-0234	Steel Telescope Spacer	1
FS-1830	Steel Telescope	1
FS-1830-MNT	Steel Telescope Wall Mount	1
FS-1830-WALL	Steel Telescope Wall R5	1
455110	Nutsert 3/8 x .690	6
562005	Bearing Flanged Bronze 1/2" x 5/8"	4
9103032-TR	Bolt Button Head 3/8" x 3/4"	1
9103052-TR	Bolt Button Head 3/8" x 1"	6
9333042	Washer Flat 3/8" x 7/8" O.D.	7
9345002	Washer Flat SAE 1/2"	1
9443022-TR	Nut Barrel 3/8" x 5/8" BH	1

S-1830-CRVSTL		
Part #	DESCRIPTION	QTY.
EE-0222	Steel Telescope Back Lens	1
EE-0223	Steel Telescope Front Lens	1
EE-0230	Steel Telescope Back Cap	1
EE-0231	Steel Telescope Front Cap	1
EE-0234	Steel Telescope Spacer	1
FS-1830	Steel Telescope	1
FS-1830-CRVWL	Steel Telescope Curved Wall R5	1
FS-1830-MNT	Steel Telescope Wall Mount	1
455110	Nutsert 3/8 x .690	6
562005	Bearing Flanged Bronze 1/2" x 5/8"	2
9103032-TR	Bolt Button Head 3/8" x 3/4"	1
9103052-TR	Bolt Button Head 3/8" x 1"	6
9333042	Washer Flat 3/8" x 7/8" O.D.	7
9345002	Washer Flat SAE 1/2"	1
9443022-TR	Nut Barrel 3/8" x 5/8" BH	1

Maintenance

Periodically tighten all screws, bolts and nuts. A periodic inspection of all parts is necessary. If a part is broken or worn, replace immediately. For general maintenance please refer to our Playground Maintenance Manual.



Manufactured by Krauss Craft, Inc.
www.playcraftsystems.com

For Customer Service Call
800.333.8519 (U.S.A.) or
541.955.9199 (International)

Rev B
3/13/2017