

R50DF457A
TOP VIEW - 0

ADA ACCESSIBILITY GUIDELINES - ADAAG CONFORMANCE

ELEVATED	ACCESSIBLE	RAMP ACCESSIBLE	GROUND	TYPES
21	13/5	11/5	14/7	5/4
CHILD CAPACITY	232	MAX FALL HEIGHT	144	

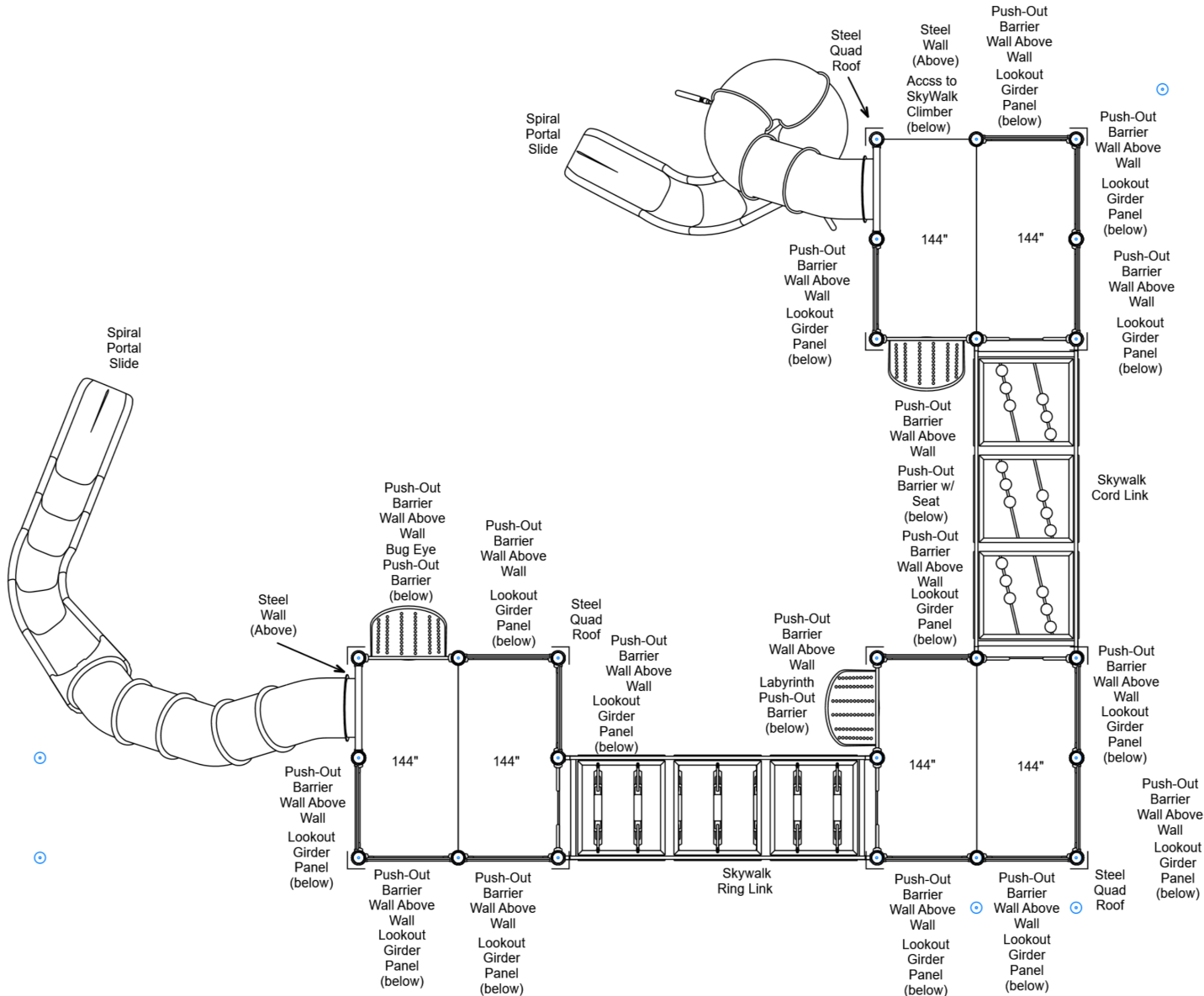
R5

FOR KIDS
AGES
5-12

GENERAL NOTES

This conceptual plan is based on information provided prior to construction. Detailed site information, including the following, should be obtained, evaluated, and utilized in the final project design. Exact site dimensions, topography, existing utilities, soil conditions and drainage solutions.

WARNING: Accessible safety surfacing material is required beneath and around this equipment that has a critical height value (Fall Height) appropriate for the highest accessible part of this equipment. Refer to the CPSC'S Handbook For Public Playground Safety, Section 4: Surfacing.



STRUCTURE # R50DF457A
PROJECT # R50DF457A
DATE 1/16/2026

Playcraft Systems
MIN. USE ZONE 61' x 51' (18.324m x 15.456m)



R50DF457A
TOP VIEW - 1

ADA ACCESSIBILITY GUIDELINES - ADAAG CONFORMANCE

ELEVATED	ACCESSIBLE	RAMP ACCESSIBLE	GROUND	TYPES
21	13/5	11/5	14/7	5/4
CHILD CAPACITY	232	MAX FALL HEIGHT	144	

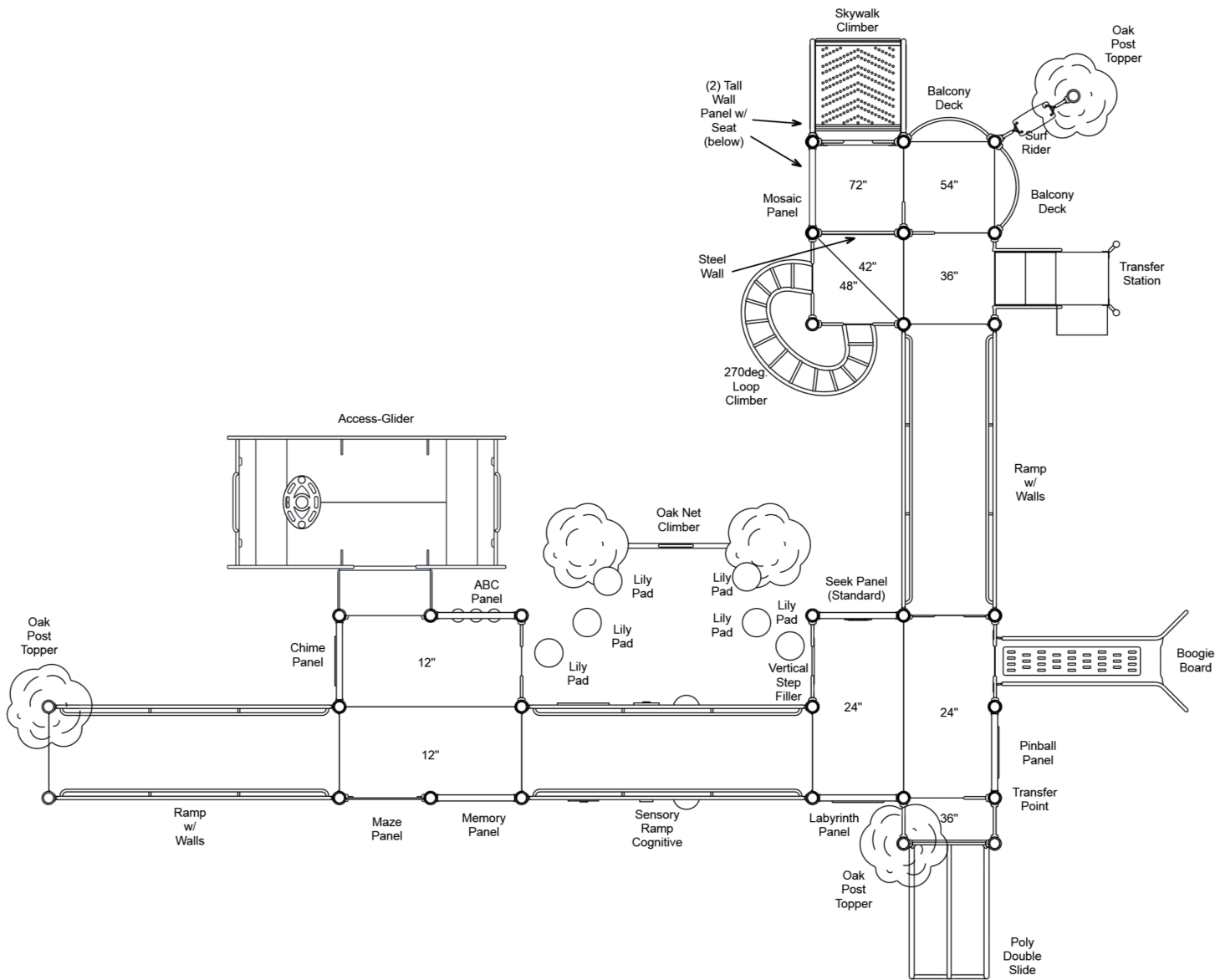
R5

FOR KIDS
AGES
5-12

GENERAL NOTES

This conceptual plan is based on information provided prior to construction. Detailed site information, including the following, should be obtained, evaluated, and utilized in the final project design. Exact site dimensions, topography, existing utilities, soil conditions and drainage solutions.

WARNING: Accessible safety surfacing material is required beneath and around this equipment that has a critical height value (Fall Height) appropriate for the highest accessible part of this equipment. Refer to the CPSC'S Handbook For Public Playground Safety, Section 4: Surfacing.



STRUCTURE # R50DF457A
PROJECT # R50DF457A
DATE 1/16/2026

Playcraft Systems
MIN. USE ZONE 61' x 51' (18.324m x 15.456m)



R50DF457A
SITE PLAN

ADA ACCESSIBILITY GUIDELINES - ADAAG CONFORMANCE

ELEVATED	ACCESSIBLE	RAMP ACCESSIBLE	GROUND	TYPES
21	13/5	11/5	14/0	5/0

R5

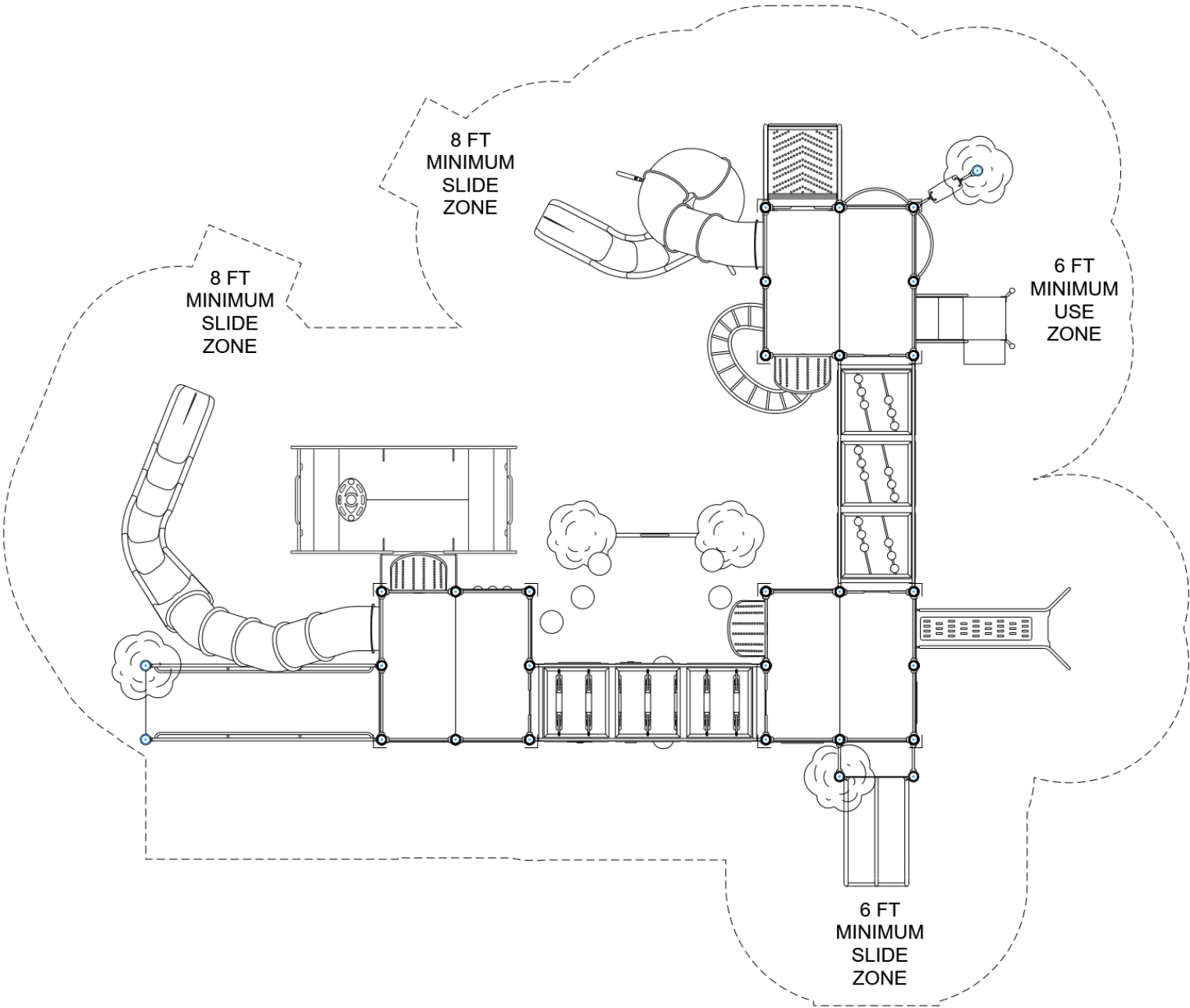
FOR KIDS
AGES
5-12

GENERAL NOTES

This Preliminary Site Plan is based on measurements that were provided in the initial planning phase. All dimensions must be verified prior to the submission of a purchase order. Playcraft Systems will not be held responsible for any discrepancies between actual dimensions and dimensions submitted in the planning phase.

The Minimum Use Zone for a play structure is based on the product design at the time of proposal. Components and structure designs may be subject to change which may affect dimensions. Therefore, before preparing the site, we strongly recommend obtaining final drawings from the factory (available after the order is placed and included in the Assembly Manual).

WARNING: Accessible safety surfacing material is required beneath and around this equipment that has a critical height value (Fall Height) appropriate for the highest accessible part of this equipment. Refer to the CPSC'S Handbook For Public Playground Safety, Section 4: Surfacing.



PROJECT # R50DF457A
DATE 1/16/2026

Playcraft Systems
MIN. USE ZONE 61' x 51' (18.324m x 15.456m)



R50DF457A
SW VIEW

R5

FOR KIDS
AGES
5-12



STRUCTURE # R50DF457A
PROJECT # R50DF457A
DATE 1/16/2026

R50DF457A
NE VIEW

R5

FOR KIDS
AGES
5-12



STRUCTURE # R50DF457A
PROJECT # R50DF457A
DATE 1/16/2026

R50DF457A

Project # R50DF457A

Date 1/16/2026

Item / Part Number	Description	Qty
[R50DF457A]		
HS-1004-R	Collars	267
A2-2922	Oak Net Climber	1
GF-7002	Dome Cap, R5	15
S-1007-R5-07ft	Post, 07ft R5	1
S-1010-R5-10ft	Post, 10ft R5	1
S-1013-R5-13ft	Post, 13ft R5	1
S-1015-R5-15ft	Post, 15ft R5	2
S-1018-R5-18ft	Post, 18ft R5	1
S-1022-R5-22ft	Post, 22ft R5	24
S-11011-13011-R5	Half Square Deck w Walls R5	1
S-1101-R5	Square Deck	3
S-1104-R5-90	Long Deck (90in)	10
S-1105-R5	Half Deck	2
S-1109-R5	Balcony Deck	2
S-1110-R	Filler, 12in	1
S-1112-R	Filler, 18in	2
S-1208-R-WALL12	Ramp 144in (Ground w/ Walls, Inc.)	1
S-1208-R-WALL36	Ramp 144in (18-24in High w/ Walls, Inc.)	1
S-1208-SRC-12	Sensory Ramp 144in (6-12, Cognitive, Inc.)	1
S-1209-24-R5	Transfer Station, 36in-L	1
S-1211-24R5G	Climber, Vertical Step Filler 24in	1
S-1280-4R5	Climber, Swoop Rung 42-48in	1
S-1301-12R5	Wall, Steel (12in)	2
S-1301-30R5	Wall, Steel (30in)	1
S-1301-R5	Wall, Steel 36in (Standard)	1
S-1301-RSSP1675	Push-Out Barrier (Above Wall, Double Bar)	17
S-1301-RSSP-3175R5	Steel Wall (Above Panel, Double Bar)	2
S-1305-R5	Double Slide SitDown Wall	1
S-1309-2-R5	Half Walls (Pair) R5	6
S-1309-R5	Transfer Point (Half Wall - Right)	1
S-1309-R5	Half Walls (Single, Left)	2
S-1333-R5G-T	Wall Seat Panel (Tall)	2
S-1362-13112-R5	Push-Out Barrier (w/ Seat)	1
S-1362-16132-R5	Push-Out Barrier (Bug Eye)	1
S-1362-16134-R5	Push-Out Barrier (Labyrinth)	1
S-1414	Lily Pad Step 12-18in	6

Item / Part Number	Description	Qty
S-1531-R5	Link, Skywalk Cord (144)	1
S-1531-R5-RL	Link, Skywalk Ring (144)	1
S-1537-F-R5	Climber, Skywalk (w/ Upper Roof wall)	1
S-1604-R5	Chime Panel	1
S-1607-R5	Maze Panel	1
S-1608-R5	Memory Panel	1
S-1618-R5	Seek Panel (Standard)	1
S-1619-R5	ABC Panel	1
S-1631-R5	Pinball Panel	1
S-1634-R5	Labyrinth Panel	1
S-1672-GDR	Girder Panel	14
S-1685-R5	Mosaic Panel	1
S-1702-3R5	Slide, Double 36in	1
S-1709-12L-RRSS	Slide, Portal 144in (L-Shaped, Right)	1
S-1709-12SPR-RR	Slide, Portal 144in (Spiral, Right)	1
S-18011-R5	Metal Roof, Quad	3
S-1848-R5	Oak Topper	3
S-1941-R5-ADA	Boogie Board ADA (w/ Half Walls)	1
S-1948-R5	Surf Rider	1
S-1975-R5	Access-Glider	1