

R501EB26A
TOP VIEW

ADA ACCESSIBILITY GUIDELINES - ADAAG CONFORMANCE

ELEVATED	ACCESSIBLE	RAMP ACCESSIBLE	GROUND	TYPES
0	0/0	0/0	21/0	5/0
CHILD CAPACITY	38	MAX FALL HEIGHT	36	

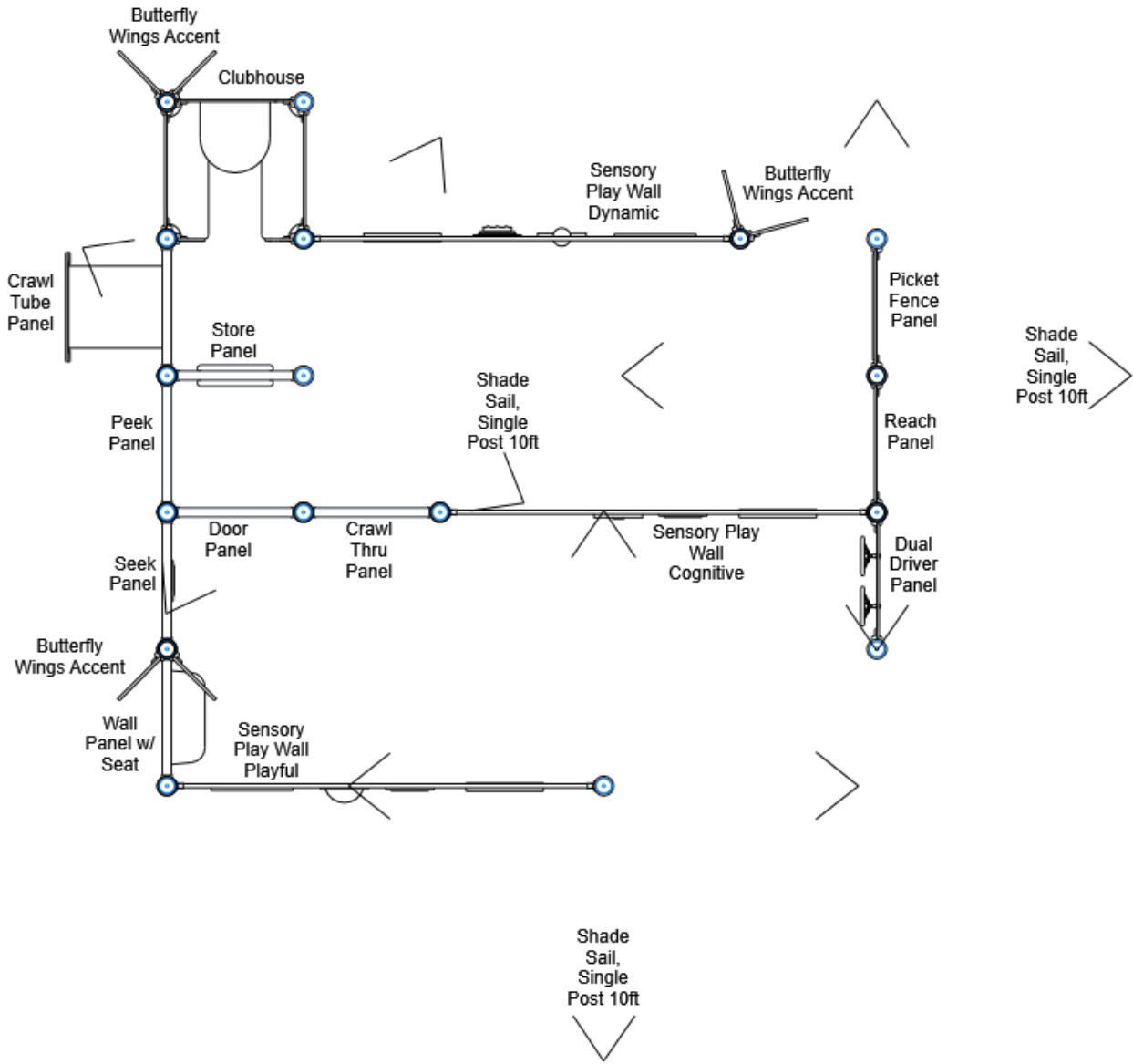
R5

FOR KIDS
AGES
2-5

GENERAL NOTES

This conceptual plan is based on information provided prior to construction. Detailed site information, including the following, should be obtained, evaluated, and utilized in the final project design. Exact site dimensions, topography, existing utilities, soil conditions and drainage solutions.

WARNING: Accessible safety surfacing material is required beneath and around this equipment that has a critical height value (Fall Height) appropriate for the highest accessible part of this equipment. Refer to the CPSC'S Handbook For Public Playground Safety, Section 4: Surfacing.



STRUCTURE # R501EB26A
PROJECT # R501EB26A
DATE 8/13/2024

Playcraft Direct, Inc.
MIN. USE ZONE 35' x 30' (10.605m x 9.084m)



R501EB26A
SITE PLAN

ADA ACCESSIBILITY GUIDELINES - ADAAG CONFORMANCE

ELEVATED	ACCESSIBLE	RAMP ACCESSIBLE	GROUND	TYPES
0	0/0	0/0	21/0	5/0

R5

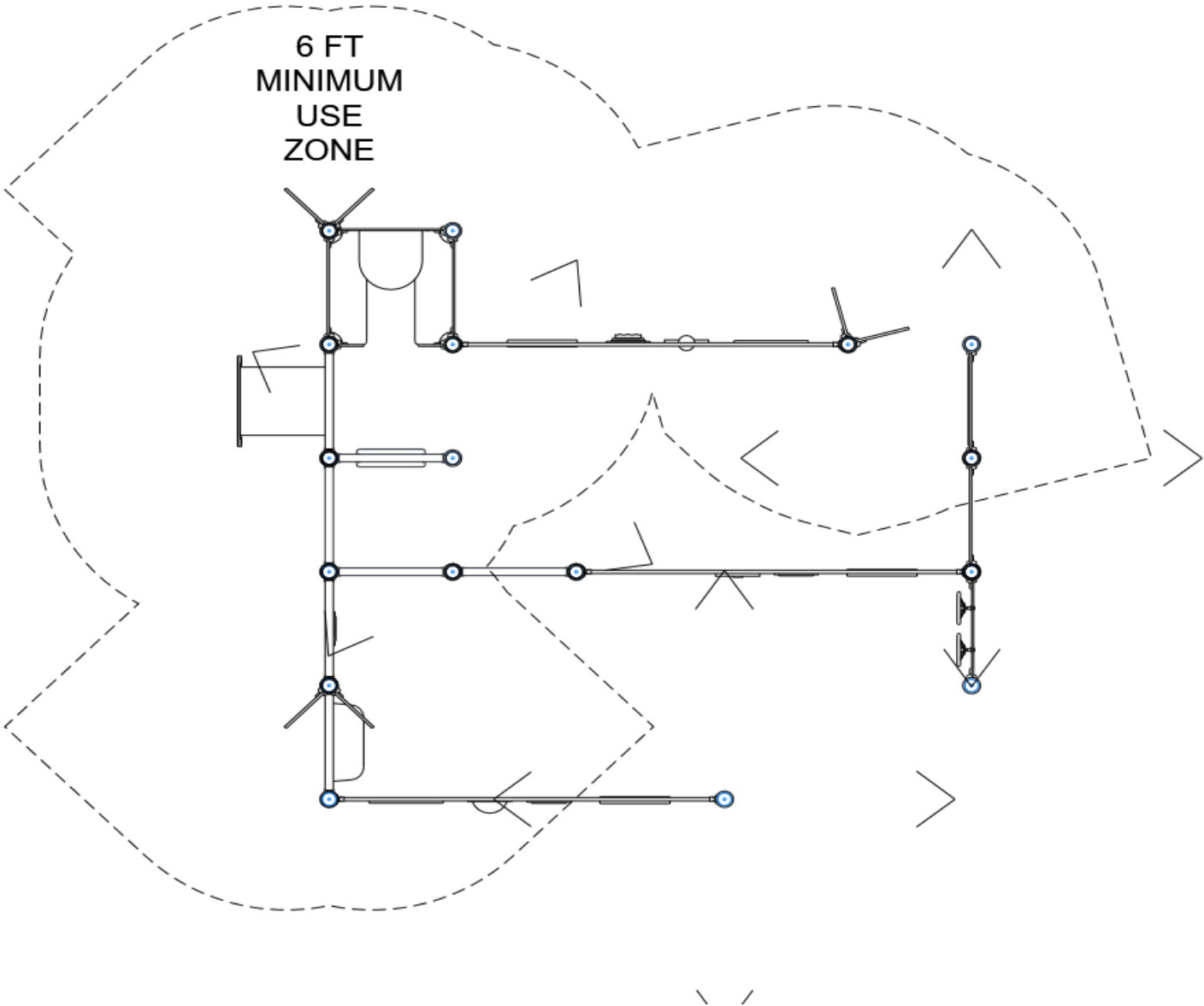
FOR KIDS
AGES
2-5

GENERAL NOTES

This Preliminary Site Plan is based on measurements that were provided in the initial planning phase. All dimensions must be verified prior to the submission of a purchase order. Playcraft Systems will not be held responsible for any discrepancies between actual dimensions and dimensions submitted in the planning phase.

The Minimum Use Zone for a play structure is based on the product design at the time of proposal. Components and structure designs may be subject to change which may affect dimensions. Therefore, before preparing the site, we strongly recommend obtaining final drawings from the factory (available after the order is placed and included in the Assembly Manual).

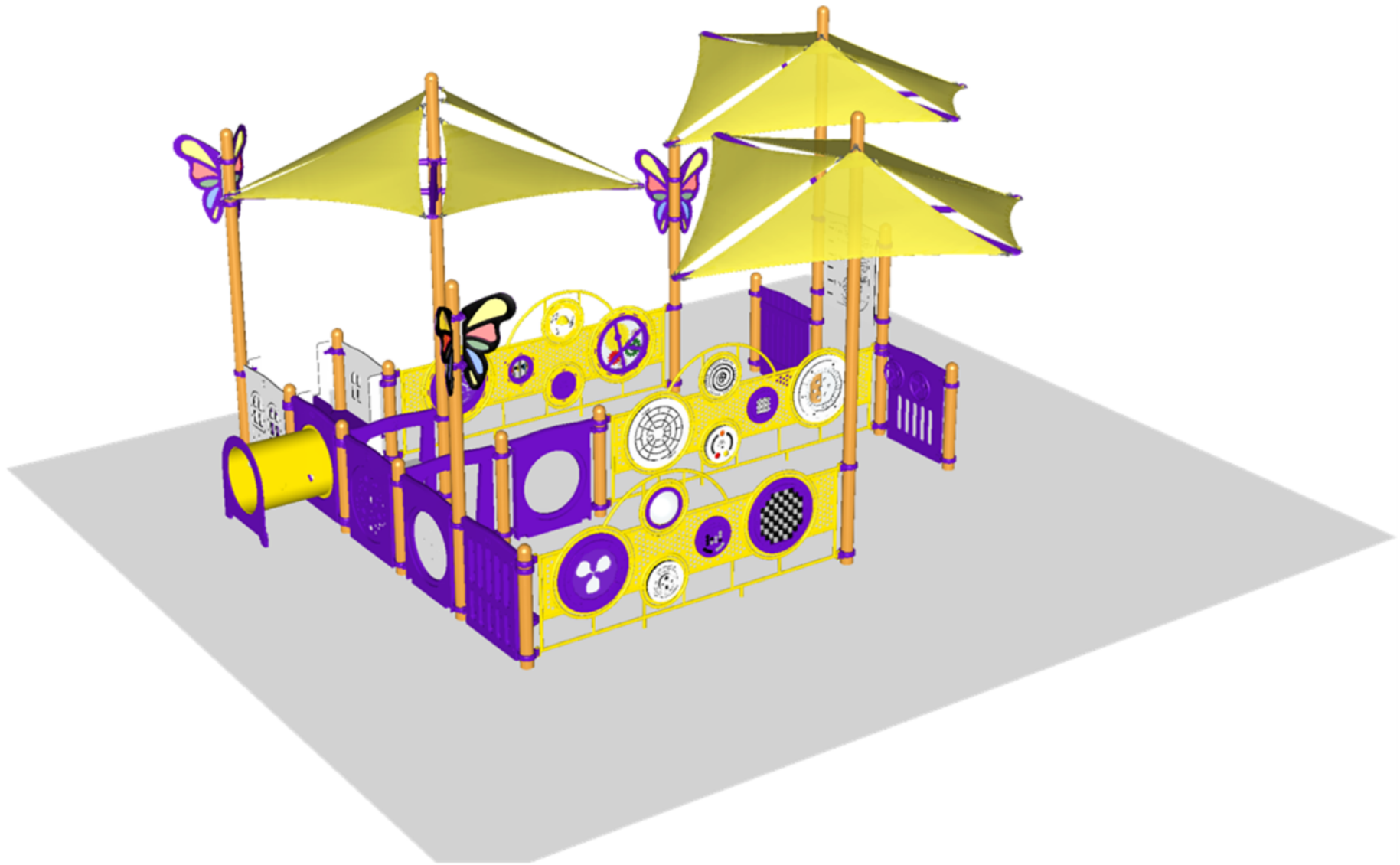
WARNING: Accessible safety surfacing material is required beneath and around this equipment that has a critical height value (Fall Height) appropriate for the highest accessible part of this equipment. Refer to the CPSC'S Handbook For Public Playground Safety, Section 4: Surfacing.



R501EB26A
SW VIEW

R5

FOR KIDS
AGES
2-5



STRUCTURE # R501EB26A
PROJECT # R501EB26A
DATE 8/13/2024

R501EB26A
NE VIEW

R5

FOR KIDS
AGES
2-5



STRUCTURE # R501EB26A
PROJECT # R501EB26A
DATE 8/13/2024

R501EB26A

Project # R501EB26A

Date 8/13/2024

Item / Part Number	Description	Qty
[R501EB26A]		
HS-1004-R	Collars	49
GF-7002	Dome Cap, R5	17
S-1007-R5-07ft	Post, 07ft R5	10
S-1011-R5-11ft	Post, 11ft R5	1
S-1013-R5-13ft	Post, 13ft R5	1
S-1014-R5-14ft	Post, 14ft R5	1
S-1015-R5-15ft	Post, 15ft R5	1
S-1018-R5-18ft	Post, 18ft R5	3
S-1333-R5G	Wall Seat Panel	1
S-1600-R5GC	Crawl Thru Panel	1
S-1610-R5G	Peek Panel	1
S-1615-R5G	Store Panel	1
S-1618-R5G	Seek Panel (Standard)	1
S-1625-2R5G	Dual Driver Panel	1
S-1638-FP-R5G	Picket Fence Panel	1
S-1639-R5	Clubhouse (Right)	1
S-1654-R5	Door Panel	1
S-1655-4R5I	Reach Panel, 48in	1
S-16801-R5G	Crawl Tube Panel	1
S-18029-R5	Shade Sail, Single Post 10ft	3
S-1851-R5C	Butterfly Wings Accent	3
S-1981-SWC	Sensory Play Wall (Cognitive)	1
S-1981-SWD	Sensory Play Wall (Dynamic)	1
S-1981-SWP	Sensory Play Wall (Playful)	1