

R50A07C4A

TOP VIEW

ADA ACCESSIBILITY GUIDELINE - ADAAG CONFORMANCE

| ELEVATED | ACCESSIBLE | RAMP ACCESSIBLE | GROUND | TYPES |
|----------|------------|-----------------|--------|-------|
| 15 | 15/8 | 0 | 5/5 | 3/3 |

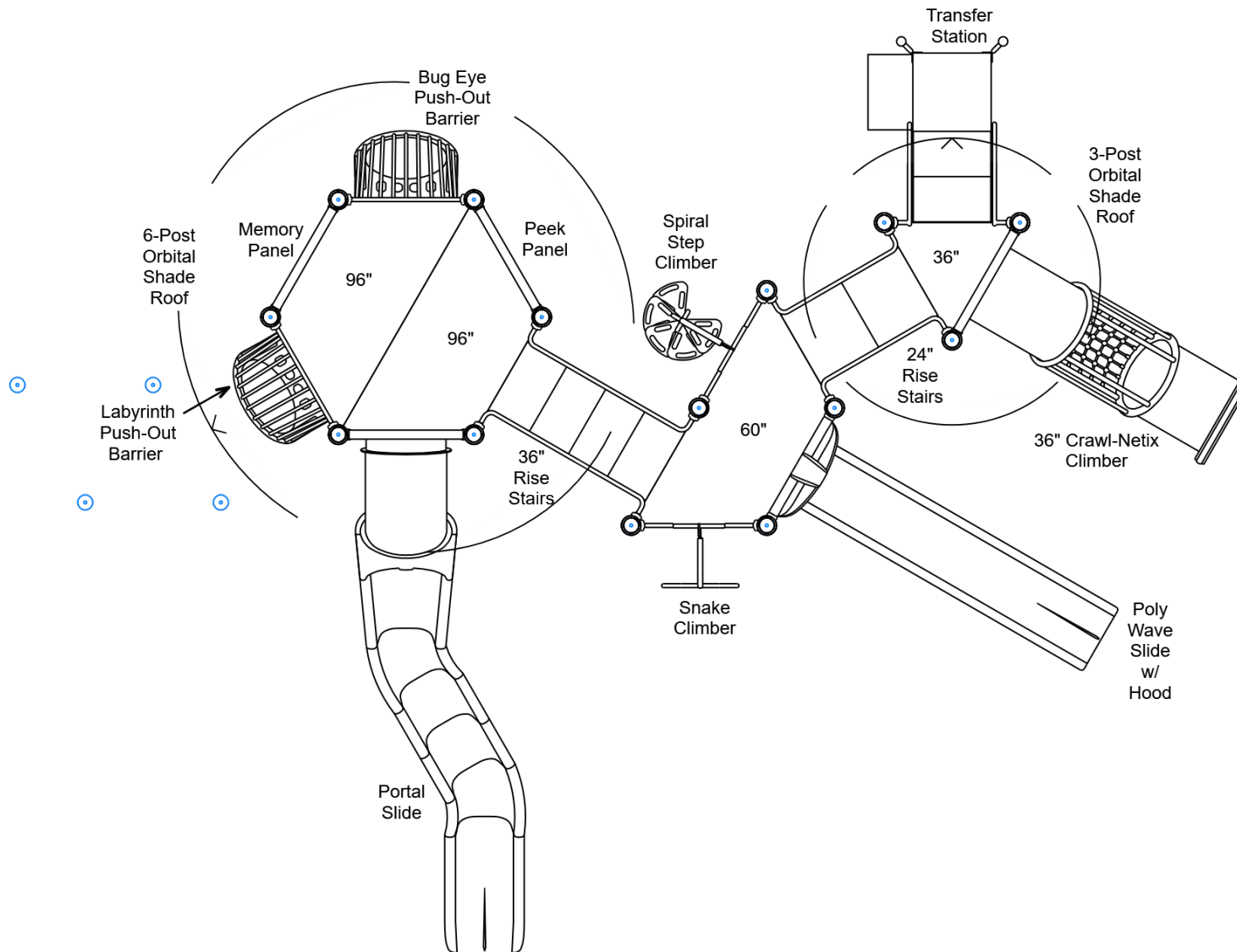
R5

FOR KIDS
AGES
5-12

GENERAL NOTES:

This conceptual plan is based on information provided prior to construction. Detailed site information, including the following, should be obtained, evaluated, and utilized in the final project design. Exact site dimensions, topography, existing utilities, soil conditions and drainage solutions.

WARNING: Accessible safety surfacing material is required beneath and around this equipment that has a critical height value (Fall Height) appropriate for the highest accessible part of this equipment. Refer to the CPSC'S Handbook For Public Playground Safety, Section 4: Surfacing.



STRUCTURE#: R50A07C4A

PROJECT#: R50A07C4A

DATE: 6/30/2020 | DRAWN BY:

MIN. USE ZONE: 54' x 41'

PLAYCRAFT REP:

Playcraft Direct, Inc.

R50A07C4A

TOP VIEW

ADA ACCESSIBILITY GUIDELINE - ADAAG CONFORMANCE

| ELEVATED | ACCESSIBLE | RAMP ACCESSIBLE | GROUND | TYPES |
|----------|------------|-----------------|--------|-------|
| 15 | 15/8 | 0 | 5/5 | 3/3 |

R5

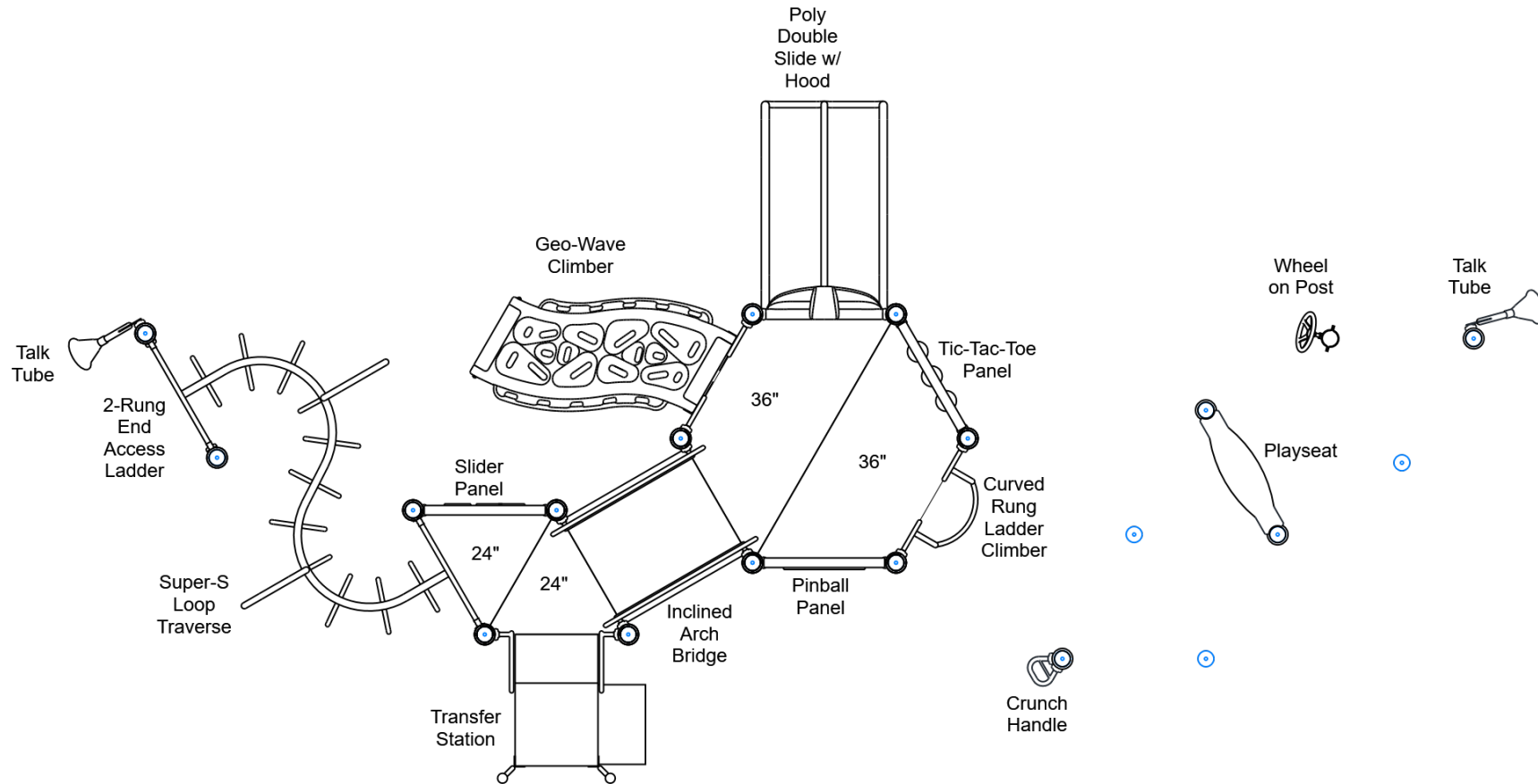
FOR KIDS

AGES
5-12

GENERAL NOTES:

This conceptual plan is based on information provided prior to construction. Detailed site information, including the following, should be obtained, evaluated, and utilized in the final project design. Exact site dimensions, topography, existing utilities, soil conditions and drainage solutions.

WARNING: Accessible safety surfacing material is required beneath and around this equipment that has a critical height value (Fall Height) appropriate for the highest accessible part of this equipment. Refer to the CPSC'S Handbook For Public Playground Safety, Section 4: Surfacing.



STRUCTURE#: R50A07C4A

PROJECT#: R50A07C4A

DATE: 6/30/2020 | DRAWN BY:

MIN. USE ZONE: 54' x 41'

PLAYCRAFT REP:

Playcraft Direct, Inc.

R50A07C4A
SITE PLAN

ADA ACCESSIBILITY GUIDELINE - ADAAG CONFORMANCE

| ELEVATED | ACCESSIBLE | RAMP ACCESSIBLE | GROUND | TYPES |
|----------|------------|-----------------|--------|-------|
| 15 | 15/8 | 0 | 5/5 | 3/3 |

R5

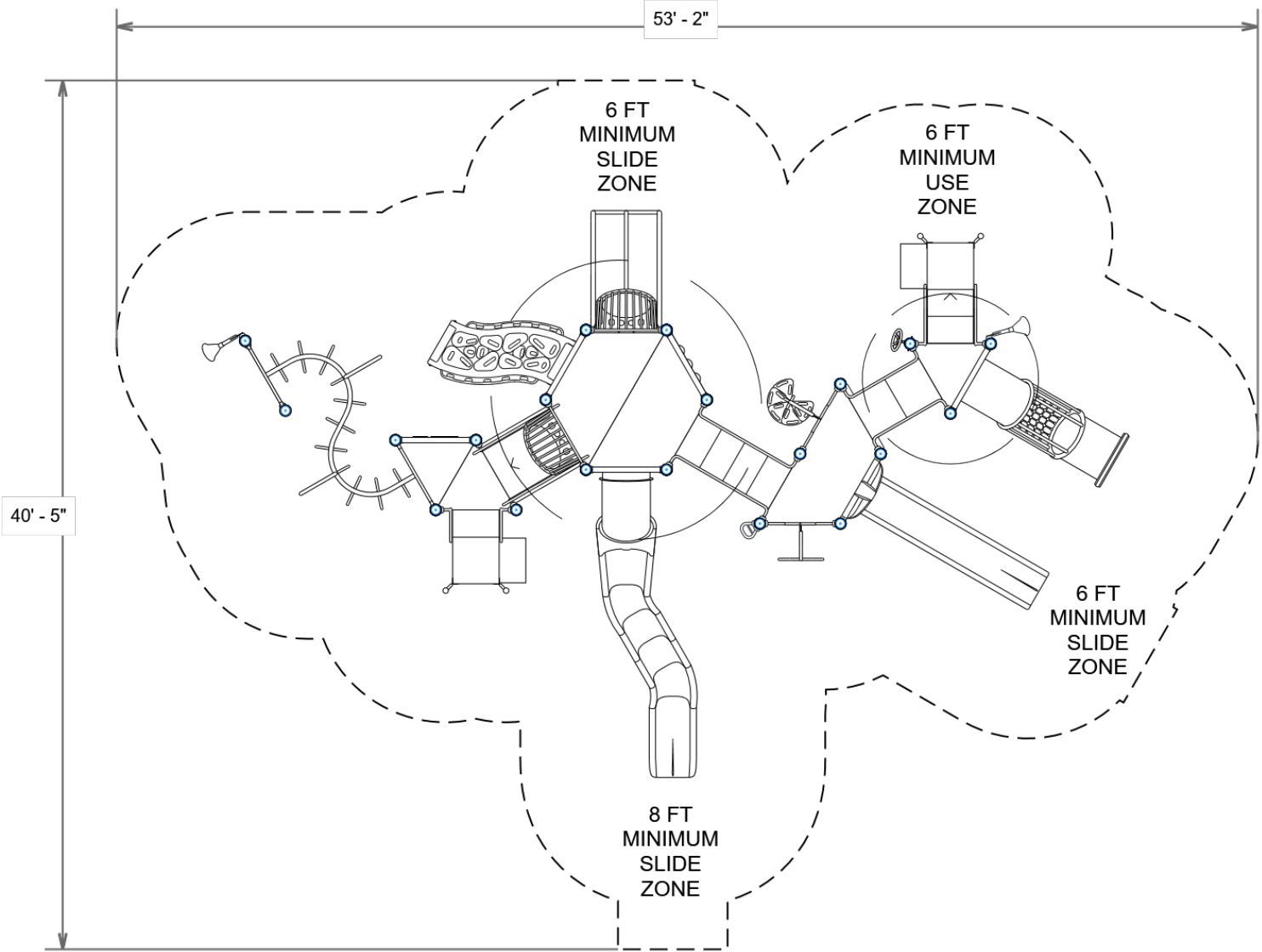
FOR KIDS
AGES
5-12

GENERAL NOTES:

This Preliminary Site Plan is based on measurements that were provided in the initial planning phase. All dimensions must be verified prior to the submission of a purchase order. Playcraft Systems will not be held responsible for any discrepancies between actual dimensions and dimensions submitted in the planning phase.

The Minimum Use Zone for a play structure is based on the product design at the time of proposal. Components and structure designs may be subject to change which may affect dimensions. Therefore, before preparing the site, we strongly recommend obtaining final drawings from the factory (available after the order is placed and included in the Assembly Manual).

WARNING: Accessible safety surfacing material is required beneath and around this equipment that has a critical height value (Fall Height) appropriate for the highest accessible part of this equipment. Refer to the CPSC'S Handbook For Public Playground Safety, Section 4: Surfacing.



PROJECT#: R50A07C4A

DATE: 6/30/2020 | DRAWN BY:

MIN. USE ZONE: 54' x 41'

PLAYCRAFT REP:

Playcraft Direct, Inc.

R50A07C4A
SW VIEW

R5

FOR KIDS
AGES
5-12



STRUCTURE#: R50A07C4A

PROJECT#: R50A07C4A

DATE: 6/30/2020 | DRAWN BY:

R50A07C4A
NE VIEW

R5

FOR KIDS
AGES
5-12



STRUCTURE#: R50A07C4A

PROJECT#: R50A07C4A

DATE: 6/30/2020 | DRAWN BY:



Bill of Materials

R50A07C4A

Project# R50A07C4A

6/30/2020

| Item | Description | Quantity |
|-----------------|--|----------|
| R50A07C4A | | |
| HS-1004-R | Collars | 71 |
| GF-7002 | Dome Cap, R5 | 11 |
| S-1009-R5-09ft | Post, 09ft R5 | 2 |
| S-1011-R5-11ft | Post, 11ft R5 | 3 |
| S-1012-R5-12ft | Post, 12ft R5 | 7 |
| S-1013-R5-13ft | Post, 13ft R5 | 2 |
| S-1014-R5-14ft | Post, 14ft R5 | 6 |
| S-1102-R5 | Tri-Deck | 3 |
| S-1103-R5 | Hex Deck, Half (5 Post) | 1 |
| S-1106-R5 | Hex Deck, Half (4 Post) | 4 |
| S-1206-24R45 | ADA Stairs, 24in Rise w/ Walls | 1 |
| S-1206-36R5 | ADA Stairs, 36in Rise w/ Walls | 1 |
| S-1209-12-R5 | Transfer Station, 24in-R | 1 |
| S-1209-24-R5 | Transfer Station, 36in-R | 1 |
| S-1222-5R | Climber, Snake 54-60in | 1 |
| S-1234-5R | Climber, Spiral Step 54-60in | 1 |
| S-1249-DGH | Climber, Inc. Geo-Wave 30-36in (H, DTG, L) | 1 |
| S-1282-3 | Climber, Curved Rung Ladder 30-36in | 1 |
| S-1303-R5 | Single Slide SitDown Hood | 1 |
| S-1306-R5 | Double Slide SitDown Hood | 1 |
| S-1309-2-R5 | Half Walls (Pair) R5 | 2 |
| S-1310-R5 | Transition Wall | 2 |
| S-1362-16132-R5 | Push-Out Barrier (Bug Eye) | 1 |
| S-1362-16134-R5 | Push-Out Barrier (Labyrinth) | 1 |
| S-1402-R5 | End Access Ladder (2-Rung) | 1 |



Bill of Materials (continued)

| Item | Description | Quantity |
|----------------|-------------------------------------|----------|
| S-1412-R-R5 | Traverse, Loop (Super-S, Right) | 1 |
| S-1514-45R5 | Bridge, Inclined Arch (45in) | 1 |
| S-1535-3DTG-R5 | Climber, Crawl-Netix 36in (DTG, 36) | 1 |
| S-1608-R5 | Memory Panel | 1 |
| S-1610-R5 | Peek Panel | 1 |
| S-1614-R5 | Slider Panel | 1 |
| S-1616-R5 | Tic-Tac-Toe Panel | 1 |
| S-1631-R5 | Pinball Panel | 1 |
| S-1702-3R5 | Slide, Double 36in | 1 |
| S-1704-5 | Slide, Wave 60in (Single) | 1 |
| S-1709-8S-LSSR | Slide, Portal 96in (L-S-S-R, Left) | 1 |
| S-18030-3 | Shade Canopy, 3-Post Orbital | 1 |
| S-18030-6 | Shade Canopy, 6-Post Orbital | 1 |
| S-1812-R5 | Driver Wheel (Post Mounted) | 1 |
| S-1910-R5 | Talk Tube (Post Mounted, Right) | 1 |
| S-1910-R5 | Talk Tube (Post Mounted, Left) | 1 |
| S-1937-R5 | Crunch Handle | 1 |
| S-1962-R5 | Playseat | 1 |
| HS-1100-2 | Deck to Deck Hardware | 3 |