

R5097BACA

TOP VIEW

ADA ACCESSIBILITY GUIDELINE - ADAAG CONFORMANCE

ELEVATED	ACCESSIBLE	RAMP ACCESSIBLE	GROUND	TYPES
12	6/6	5	4/0	3/3

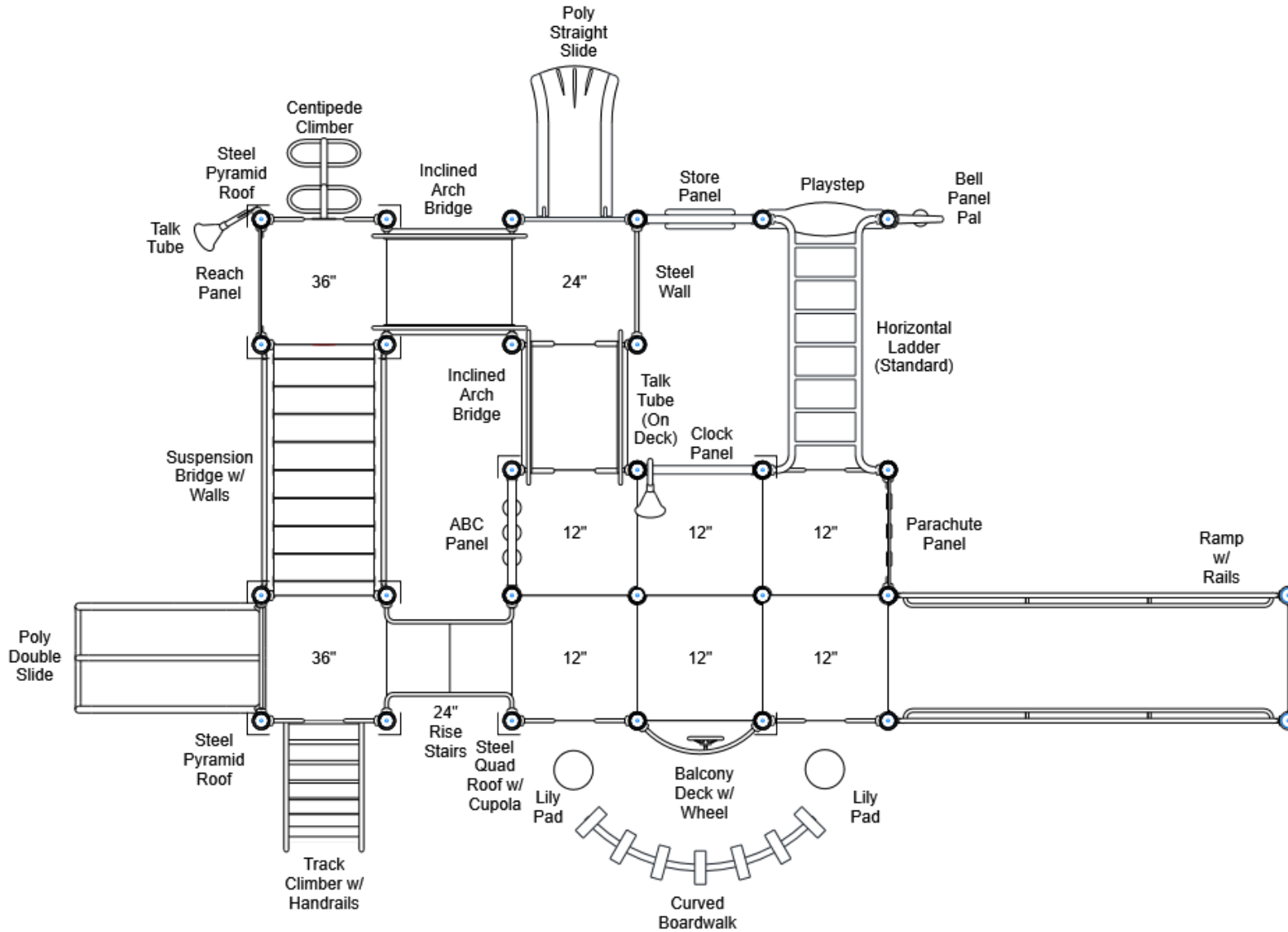
R5

FOR KIDS
AGES
2-5

GENERAL NOTES:

This conceptual plan is based on information provided prior to construction. Detailed site information, including the following, should be obtained, evaluated, and utilized in the final project design. Exact site dimensions, topography, existing utilities, soil conditions and drainage solutions.

WARNING: Accessible safety surfacing material is required beneath and around this equipment that has a critical height value (Fall Height) appropriate for the highest accessible part of this equipment. Refer to the CPSC'S Handbook For Public Playground Safety, Section 4: Surfacing.



STRUCTURE#: R5097BACA
PROJECT#: R5097BACA
DATE: 8/8/2022

MIN. USE ZONE: 43' x 37'

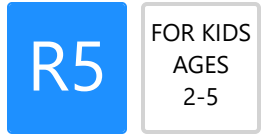
PLAYCRAFT REP:
Playcraft Direct, Inc.



R5097BACA SITE PLAN

ADA ACCESSIBILITY GUIDELINE - ADAAG CONFORMANCE

ELEVATED	ACCESSIBLE	RAMP ACCESSIBLE	GROUND	TYPES
12	6/6	5	4/0	3/3

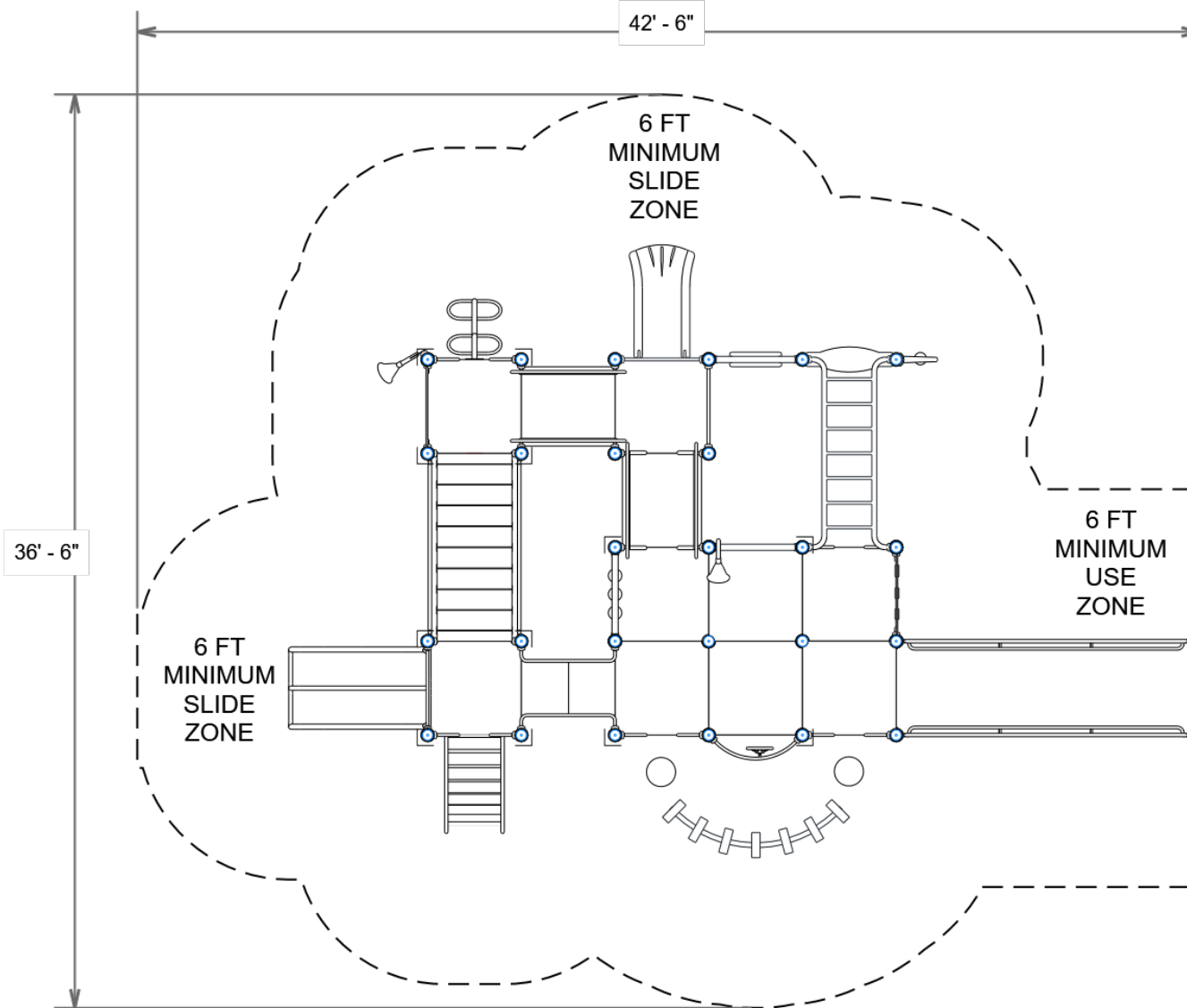


GENERAL NOTES:

This Preliminary Site Plan is based on measurements that were provided in the initial planning phase. All dimensions must be verified prior to the submission of a purchase order. Playcraft Systems will not be held responsible for any discrepancies between actual dimensions and dimensions submitted in the planning phase.

The Minimum Use Zone for a play structure is based on the product design at the time of proposal. Components and structure designs may be subject to change which may affect dimensions. Therefore, before preparing the site, we strongly recommend obtaining final drawings from the factory (available after the order is placed and included in the Assembly Manual).

WARNING: Accessible safety surfacing material is required beneath and around this equipment that has a critical height value (Fall Height) appropriate for the highest accessible part of this equipment. Refer to the CPSC's Handbook For Public Playground Safety, Section 4: Surfacing.



PROJECT#: R5097BACA
DATE: 8/8/2022

MIN. USE ZONE: 43' x 37'

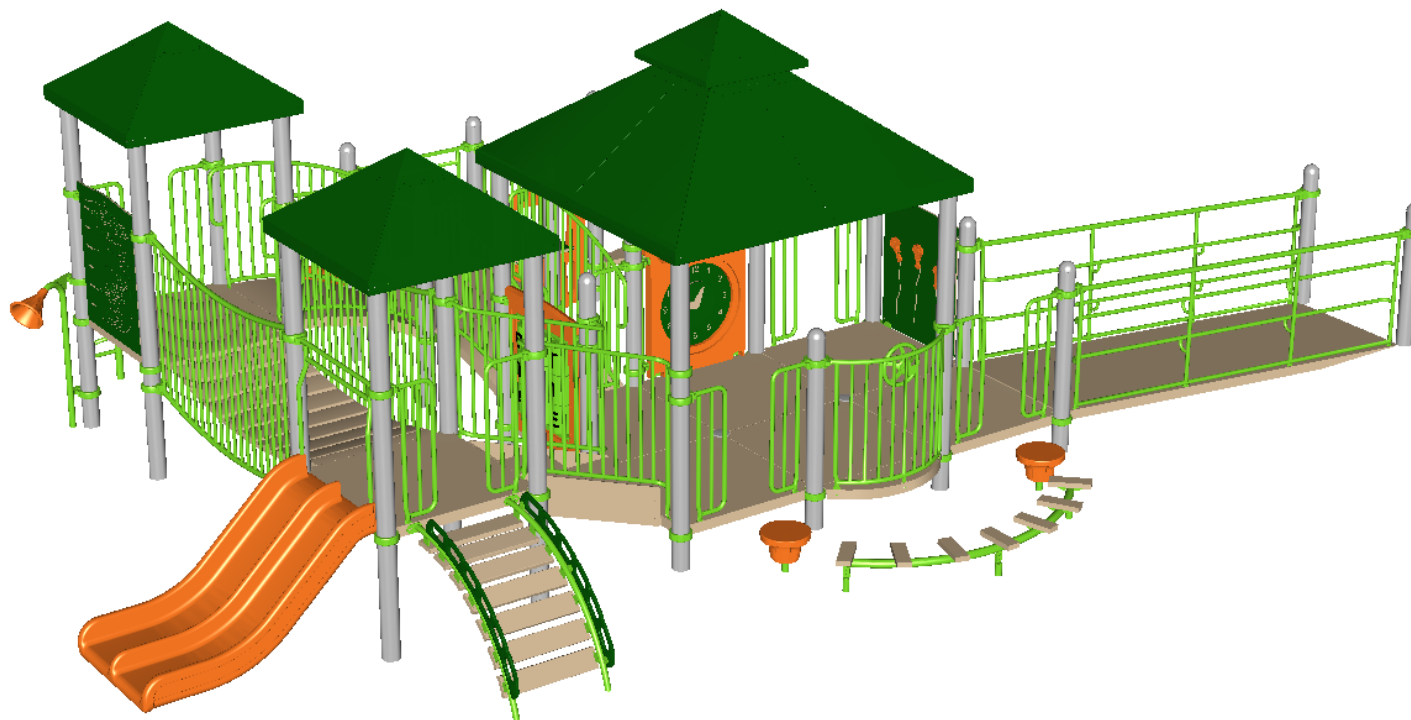
PLAYCRAFT REP:
Playcraft Direct, Inc.



R5097BACA
SW VIEW

R5

FOR KIDS
AGES
2-5



STRUCTURE#: R5097BACA
PROJECT#: R5097BACA
DATE: 8/8/2022

R5097BACA
NE VIEW

R5

FOR KIDS
AGES
2-5



STRUCTURE#: R5097BACA
PROJECT#: R5097BACA
DATE: 8/8/2022



Bill of Materials

R5097BACA

Project# R5097BACA

8/8/2022

Item	Description	Quantity
R5097BACA		
HS-1004-R	Collars	72
A2-2430	Boardwalk, Curved (90 Degree)	1
GF-7001	Flat Cap, R5	2
GF-7002	Dome Cap, R5	14
S-1005-R5F-9-012-051	Post, 5ft, 12in (51in)	2
S-1007-R5-07ft	Post, 07ft R5	2
S-1008-R5-08ft	Post, 08ft R5	3
S-1009-R5-09ft	Post, 09ft R5	9
S-1011-R5-11ft	Post, 11ft R5	4
S-1012-R5-12ft	Post, 12ft R5	8
S-1101-R5	Square Deck	9
S-1109-R5-MT	Balcony Deck w/ Wheel	1
S-1206-24R45	ADA Stairs, 24in Rise w/ Walls	1
S-1208-R-RAIL12	Ramp 144in (Ground w/ Rails, Inc.)	1
S-1220-3	Climber, Centipede 30-36in	1
S-1232-3-HR	Climber, Track 30-36in (w/ Hand Rails)	1
S-1301-R5	Wall, Steel 36in (Standard)	1
S-1305-R5	Double Slide SitDown Wall	1
S-1309-2-R5	Half Walls (Pair) R5	5
S-1406-90R5	Traverse, Horizontal Ladder (7-Rung)	1
S-1414	Lily Pad Step 12-18in	2
S-1506-W-90R5	Bridge, Suspension w/ Walls	1
S-1514-45R5	Bridge, Inclined Arch (45in)	1
S-1514-R5ADA	Bridge, Inclined Arch (45in, CSA)	1
S-1605-R5	Clock Panel	1



PLAYCRAFT®
S Y S T E M S

**Bill of Materials
(continued)**

Item	Description	Quantity
S-1615-R5G	Store Panel	1
S-1619-R5	ABC Panel	1
S-16431-R5	Parachute Panel	1
S-1655-3R5	Reach Panel, 36in	1
S-1661-R5	Panel Pal, Bell	1
S-1701-2R5V2	Slide, Single 24-30in (Straight)	1
S-1702-3R5	Slide, Double 36in	1
S-18011-CUPR5	Metal Roof, Quad w/ Cupola	1
S-1807-R5STL	Metal Roof, Pyramid	2
S-1910-12R5I	Talk Tube 06-12in (On Deck, Left)	1
S-1910-R5	Talk Tube (Post Mounted, Right)	1
S-1962-R5	Playseat	1