

R5095600A TOP VIEW

ADA ACCESSIBILITY GUIDELINE - ADAAG CONFORMANCE

ELEVATED	ACCESSIBLE	RAMP ACCESSIBLE	GROUND	TYPES
8	8/4	6	28/0	4/0

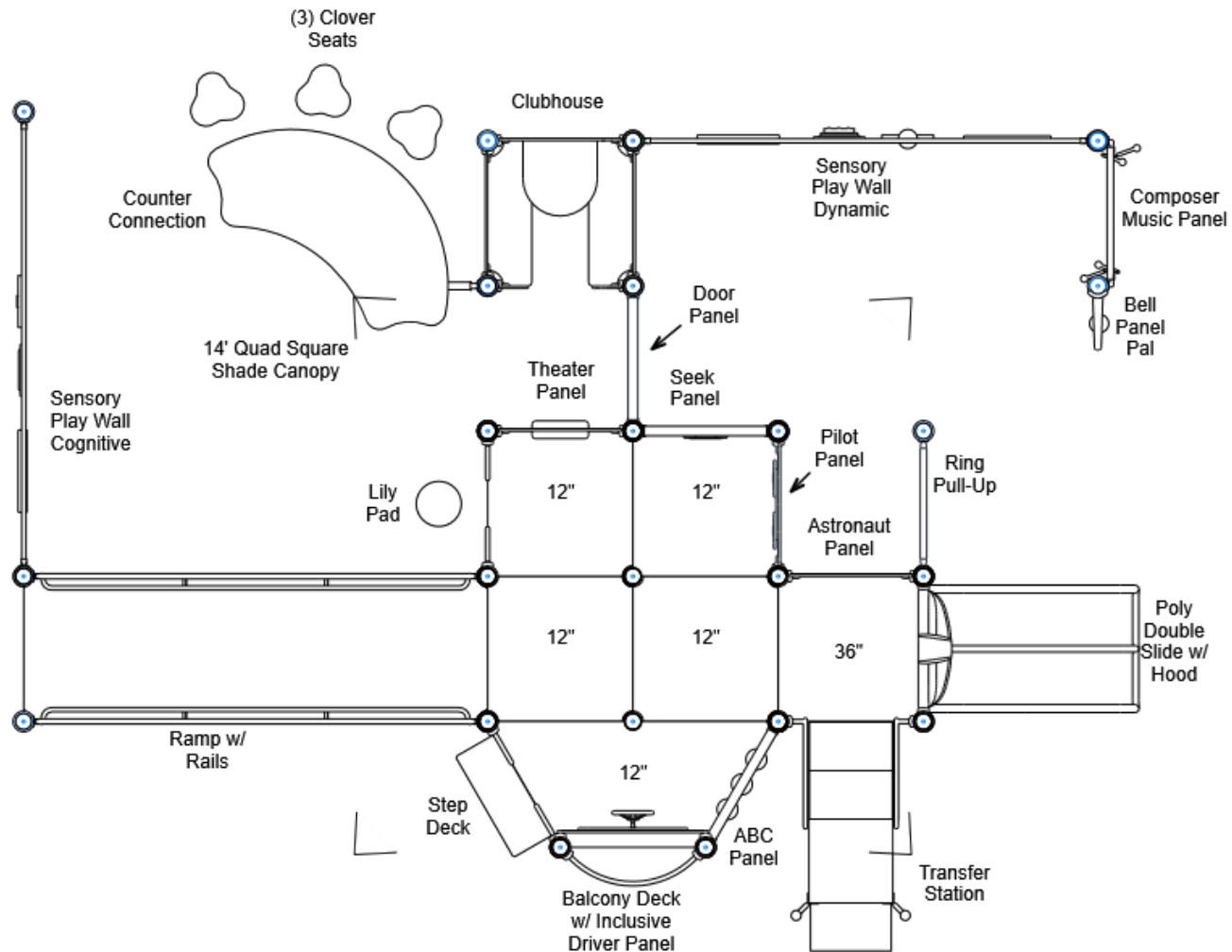
R5

FOR KIDS
AGES
2-5

GENERAL NOTES:

This conceptual plan is based on information provided prior to construction. Detailed site information, including the following, should be obtained, evaluated, and utilized in the final project design. Exact site dimensions, topography, existing utilities, soil conditions and drainage solutions.

WARNING: Accessible safety surfacing material is required beneath and around this equipment that has a critical height value (Fall Height) appropriate for the highest accessible part of this equipment. Refer to the CPSC'S Handbook For Public Playground Safety, Section 4: Surfacing.



STRUCTURE#: R5095600A
PROJECT#: R5095600A
DATE: 12/5/2022

MIN. USE ZONE: 37' x 35'

PLAYCRAFT REP:
Playcraft Direct, Inc.

R5095600A SITE PLAN

ADA ACCESSIBILITY GUIDELINE - ADAAG CONFORMANCE

ELEVATED	ACCESSIBLE	RAMP ACCESSIBLE	GROUND	TYPES
8	8/4	6	28/0	4/0

R5

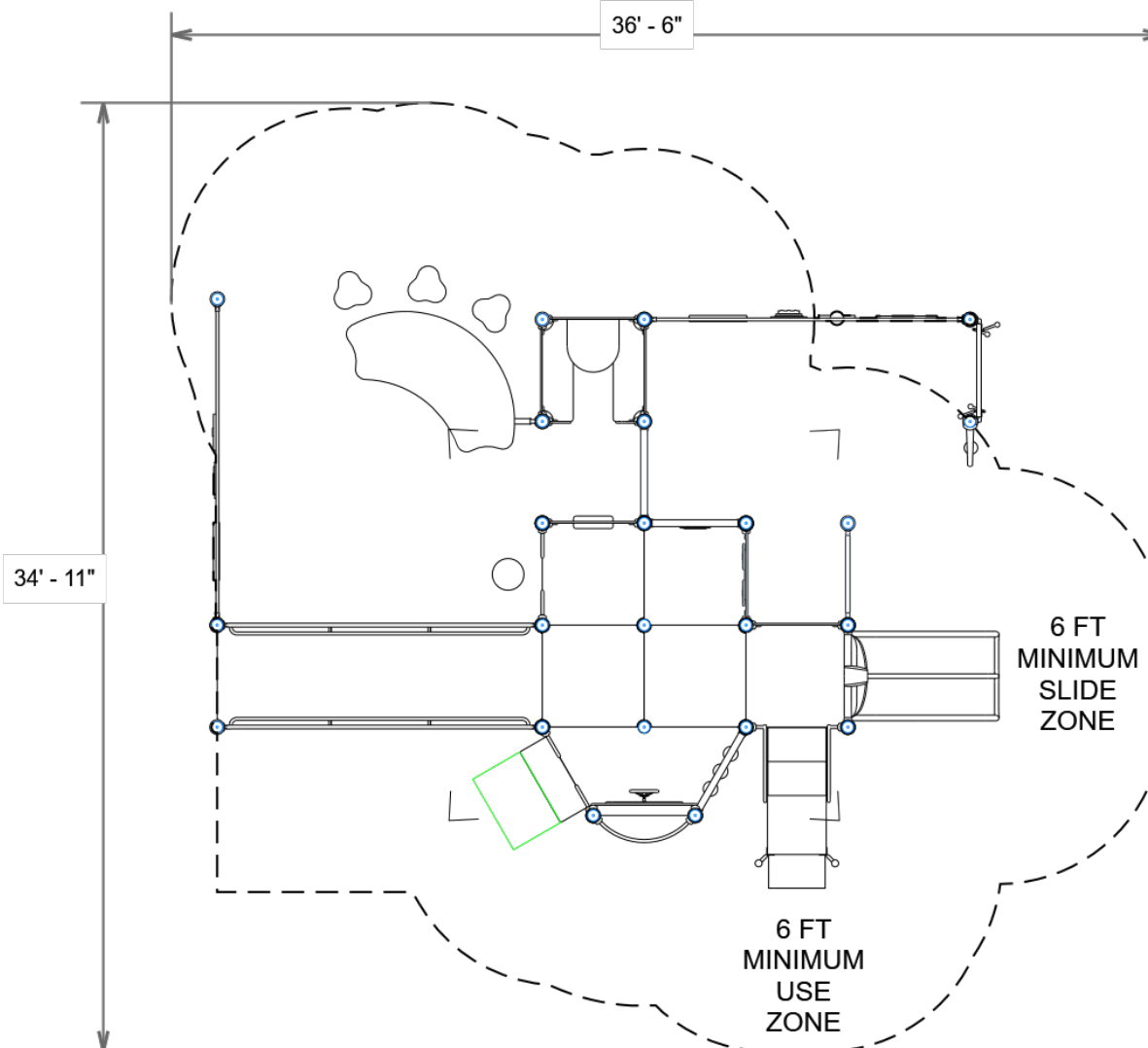
FOR KIDS
AGES
2-5

GENERAL NOTES:

This Preliminary Site Plan is based on measurements that were provided in the initial planning phase. All dimensions must be verified prior to the submission of a purchase order. Playcraft Systems will not be held responsible for any discrepancies between actual dimensions and dimensions submitted in the planning phase.

The Minimum Use Zone for a play structure is based on the product design at the time of proposal. Components and structure designs may be subject to change which may affect dimensions. Therefore, before preparing the site, we strongly recommend obtaining final drawings from the factory (available after the order is placed and included in the Assembly Manual).

WARNING: Accessible safety surfacing material is required beneath and around this equipment that has a critical height value (Fall Height) appropriate for the highest accessible part of this equipment. Refer to the CPSC'S Handbook For Public Playground Safety, Section 4: Surfacing.



PROJECT#: R5095600A
DATE: 12/5/2022

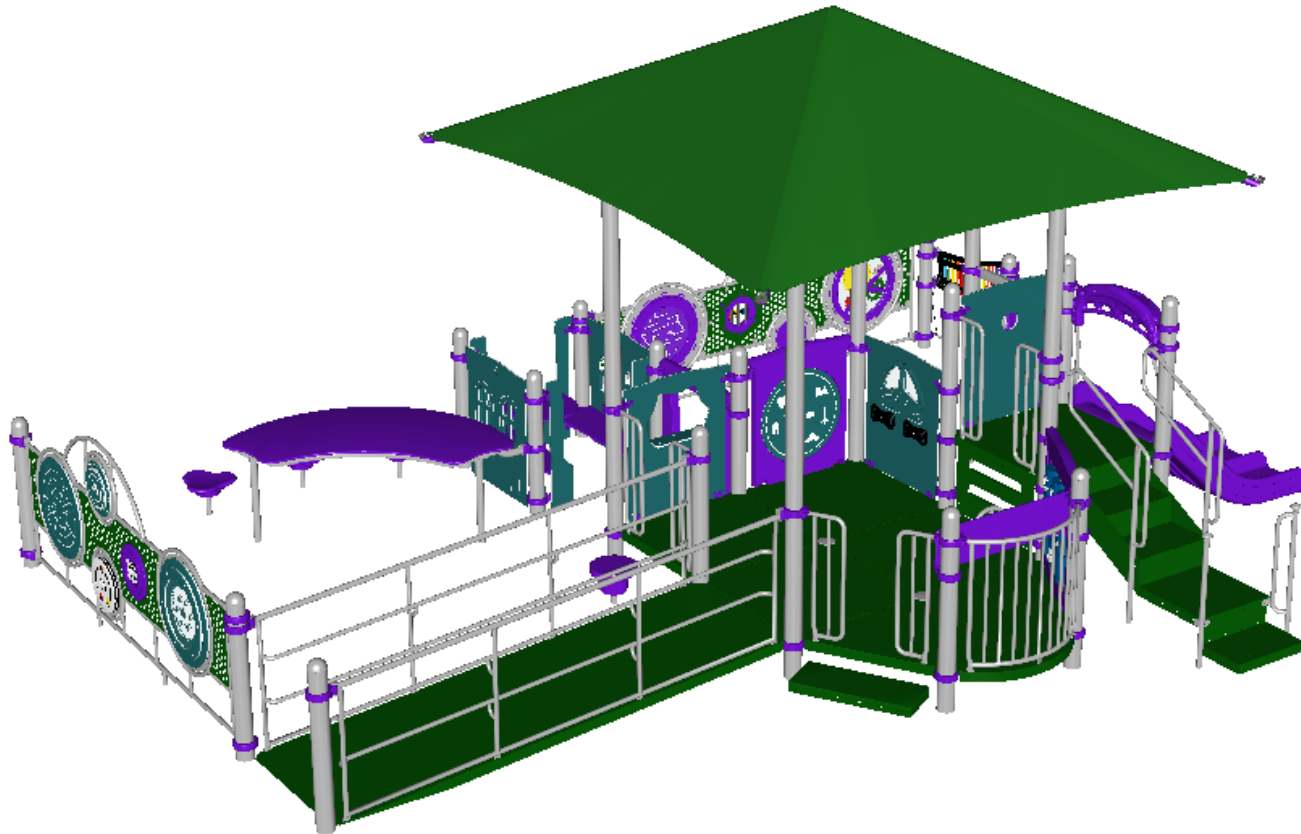
MIN. USE ZONE: 37' x 35'

PLAYCRAFT REP:
Playcraft Direct, Inc.

R5095600A
SW VIEW

R5

FOR KIDS
AGES
2-5

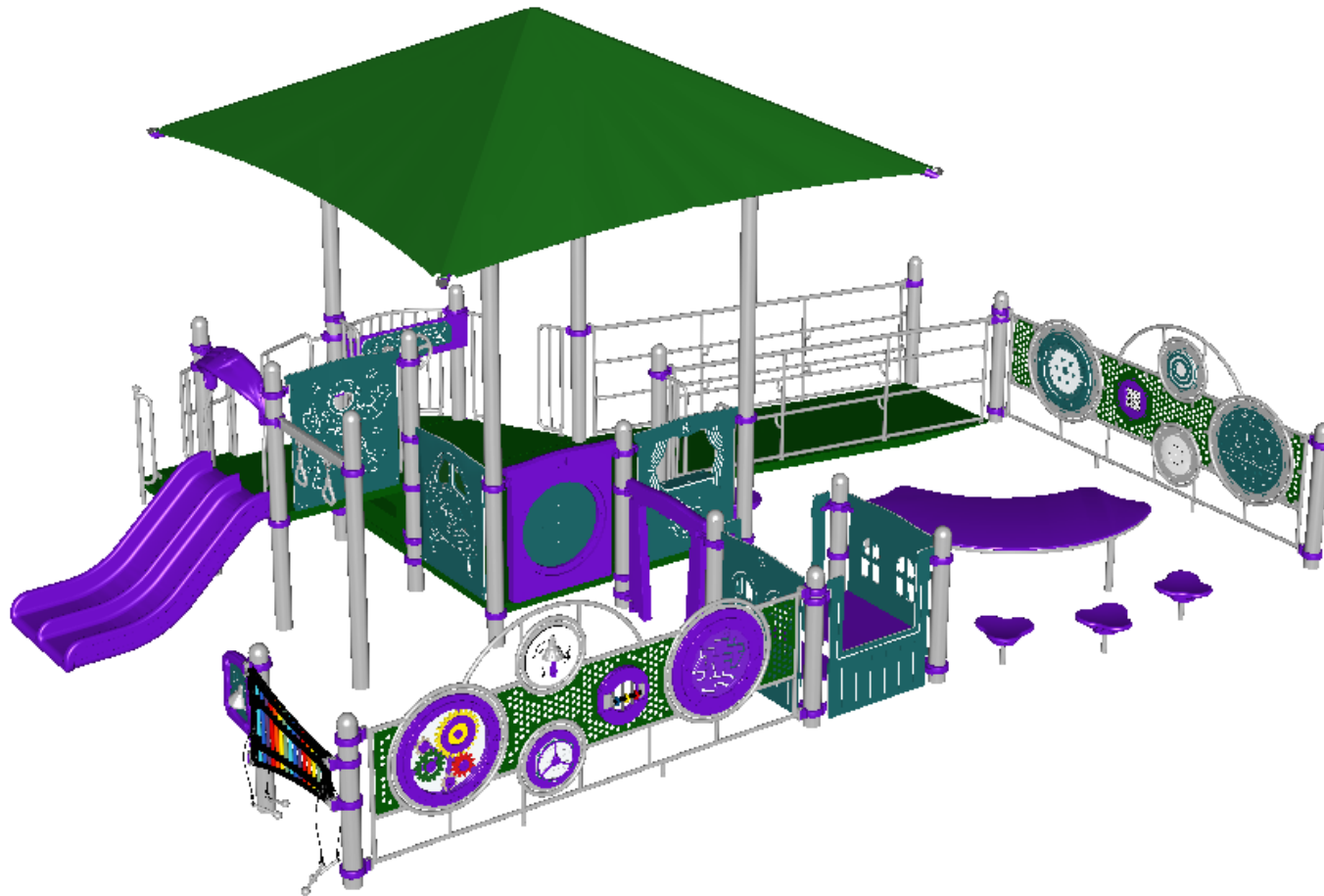


STRUCTURE#: R5095600A
PROJECT#: R5095600A
DATE: 12/5/2022

R5095600A
NE VIEW

R5

FOR KIDS
AGES
2-5



STRUCTURE#: R5095600A
PROJECT#: R5095600A
DATE: 12/5/2022



Bill of Materials

R5095600A

Project# R5095600A

12/5/2022

Item	Description	Quantity
R5095600A		
HS-1004-R	Collars	64
GF-7001	Flat Cap, R5	2
GF-7002	Dome Cap, R5	17
S-1005-R5F-9-012-051	Post, 5ft, 12in (51in)	2
S-1007-R5-07ft	Post, 07ft R5	9
S-1008-R5-08ft	Post, 08ft R5	4
S-1010-R5-10ft	Post, 10ft R5	4
S-1014-R5-14ft	Post, 14ft R5	4
S-1101-R5	Square Deck	5
S-1103-R5	Hex Deck, Half (5 Post)	1
S-1202-R5	Step Deck, 12in	1
S-1208-R-RAIL12	Ramp 144in (Ground w/ Rails, Inc.)	1
S-1209-24-R5	Transfer Station, 36in-C	1
S-1211-R	Filler, Step - 24in, R5	1
S-1306-R5	Double Slide SitDown Hood	1
S-1309-2-R5	Half Walls (Pair) R5	1
S-1414	Lily Pad Step 12-18in	1
S-1414-C	Clover Seat	3
S-1618-R5	Seek Panel (Standard)	1
S-1619-R5	ABC Panel	1
S-1628-R5-B	Inclusive Panel, Driver (w/ Balcony Deck)	1
S-1639-R5	Clubhouse (Left)	1
S-1643-R5	Pilot Panel	1
S-16520-R5I	Composer Panel	1
S-1654-R5	Door Panel	1



Bill of Materials (continued)

Item	Description	Quantity
S-1656-R5	Theater Panel	1
S-1657-R5	Astronaut Panel	1
S-1661-R5	Panel Pal, Bell	1
S-1702-3R5	Slide, Double 36in	1
S-18021-R5QD14	Shade Canopy, 14ft Quad Square	1
S-1936-R5	Ring Pull-Up	1
S-1980-R5	Counter Connection MT-6	1
S-1981-SWC	Sensory Play Wall (Cognitive)	1
S-1981-SWD	Sensory Play Wall (Dynamic)	1