

R50669B5A

TOP VIEW

ADA ACCESSIBILITY GUIDELINES - ADAAG CONFORMANCE

| ELEVATED | ACCESSIBLE | RAMP ACCESSIBLE | GROUND | TYPES |
|----------------|------------|-----------------|--------|-------|
| 16 | 16/8 | 0/0 | 6/5 | 3/3 |
| CHILD CAPACITY | 169 | MAX FALL HEIGHT | 96 | |

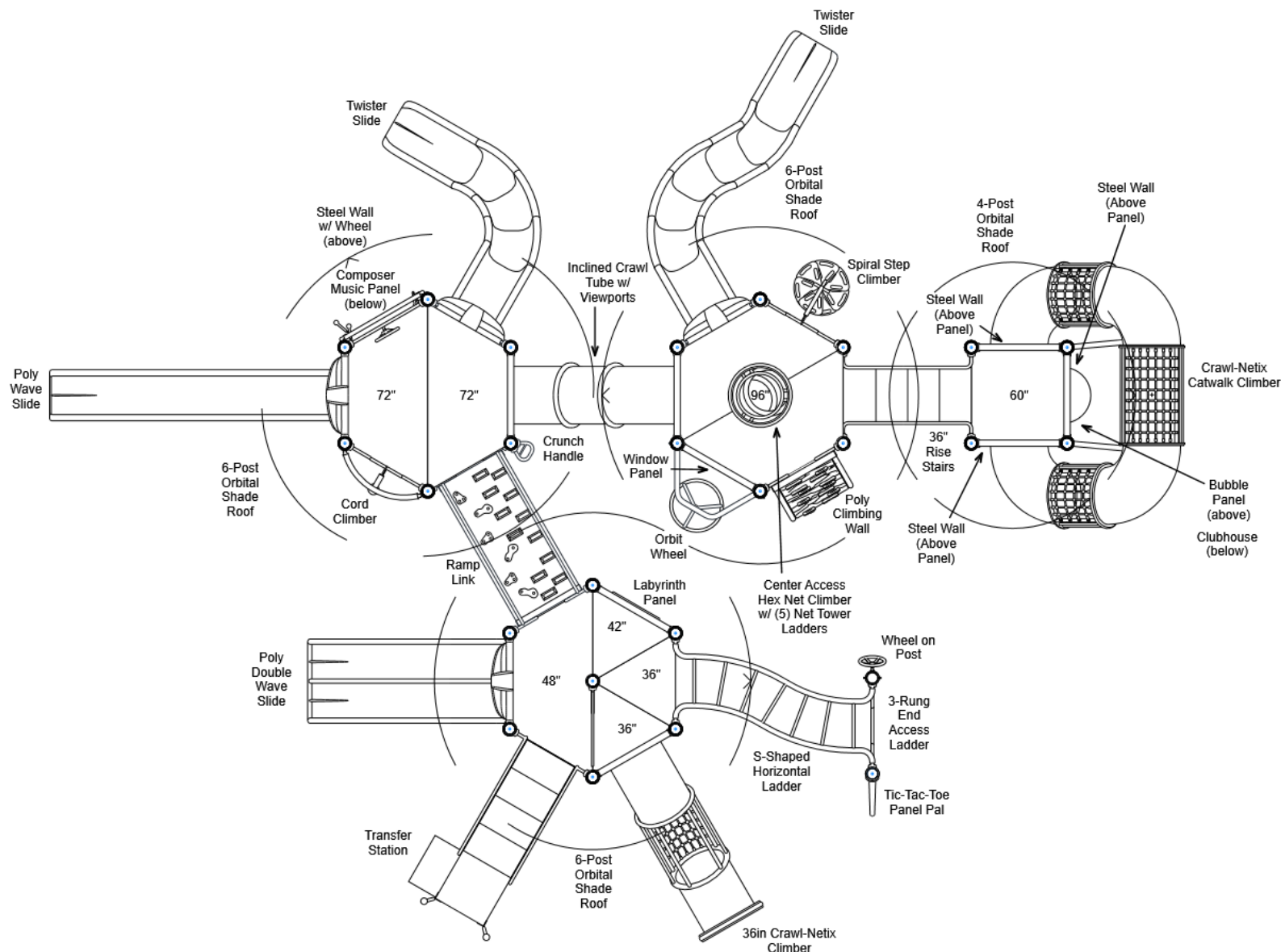
R5

FOR KIDS
AGES
5-12

GENERAL NOTES

This conceptual plan is based on information provided prior to construction. Detailed site information, including the following, should be obtained, evaluated, and utilized in the final project design. Exact site dimensions, topography, existing utilities, soil conditions and drainage solutions.

WARNING: Accessible safety surfacing material is required beneath and around this equipment that has a critical height value (Fall Height) appropriate for the highest accessible part of this equipment. Refer to the CPSC'S Handbook For Public Playground Safety, Section 4: Surfacing.



STRUCTURE # R50669B5A
PROJECT # R50669B5A
DATE 9/22/2023

Playcraft Direct, Inc.

MIN. USE ZONE 57' x 50' (17.208m x 15.061m)

R50669B5A
SITE PLAN

ADA ACCESSIBILITY GUIDELINES - ADAAG CONFORMANCE

| ELEVATED | ACCESSIBLE | RAMP ACCESSIBLE | GROUND | TYPES |
|----------|------------|-----------------|--------|-------|
| 16 | 16/8 | 0/0 | 6/5 | 3/3 |

R5

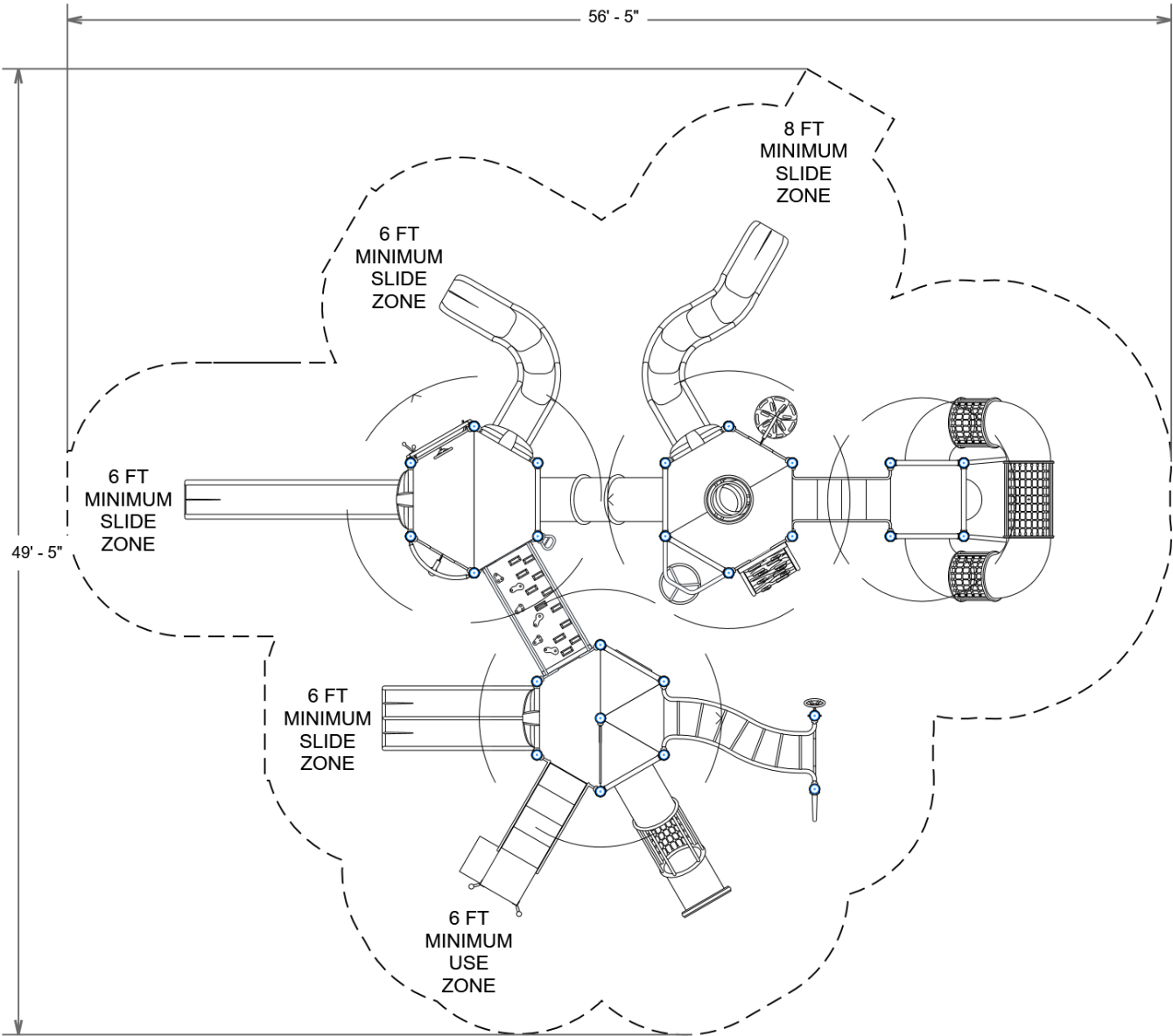
FOR KIDS
AGES
5-12

GENERAL NOTES

This Preliminary Site Plan is based on measurements that were provided in the initial planning phase. All dimensions must be verified prior to the submission of a purchase order. Playcraft Systems will not be held responsible for any discrepancies between actual dimensions and dimensions submitted in the planning phase.

The Minimum Use Zone for a play structure is based on the product design at the time of proposal. Components and structure designs may be subject to change which may affect dimensions. Therefore, before preparing the site, we strongly recommend obtaining final drawings from the factory (available after the order is placed and included in the Assembly Manual).

WARNING: Accessible safety surfacing material is required beneath and around this equipment that has a critical height value (Fall Height) appropriate for the highest accessible part of this equipment. Refer to the CPSC'S Handbook For Public Playground Safety, Section 4: Surfacing.



R50669B5A
SW VIEW

R5

FOR KIDS
AGES
5-12

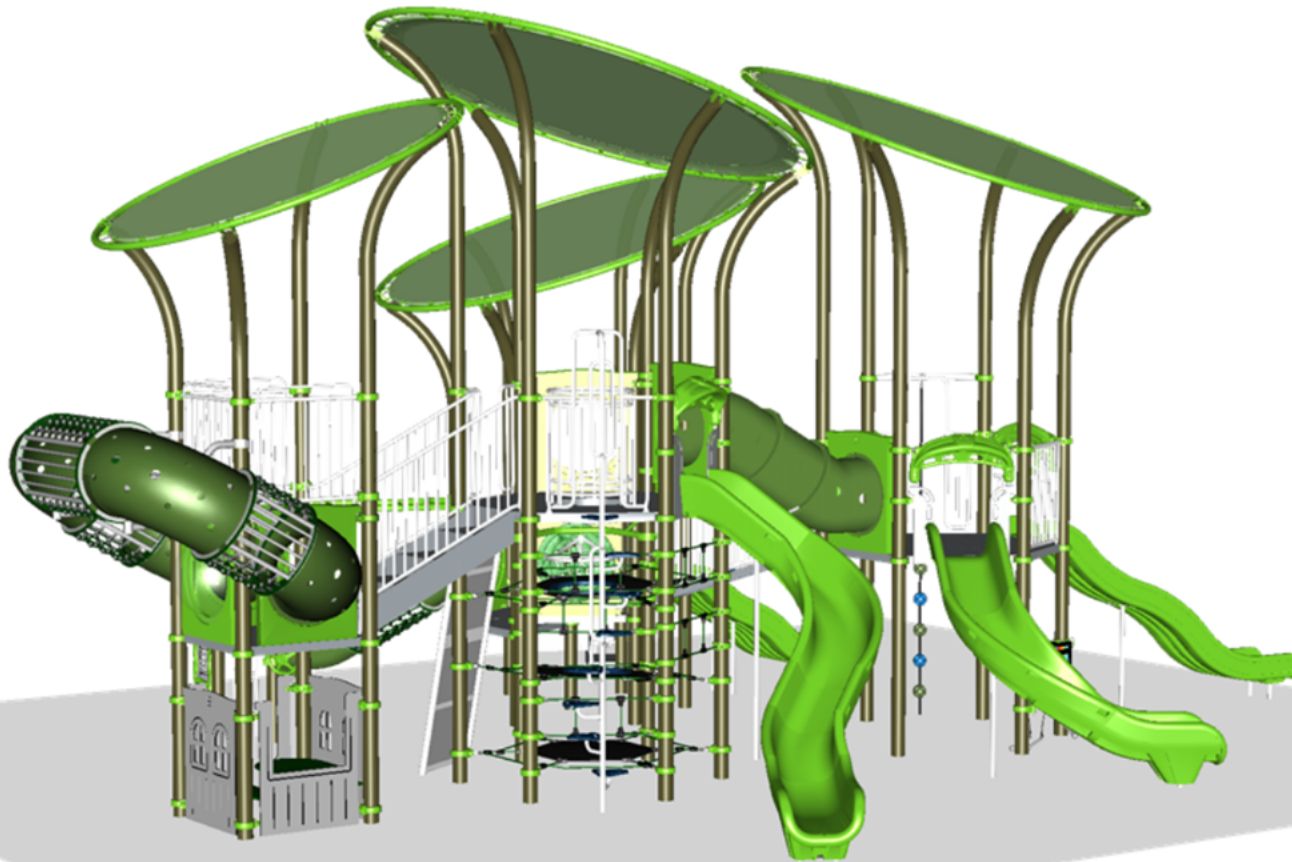


STRUCTURE # R50669B5A
PROJECT # R50669B5A
DATE 9/22/2023

R50669B5A
NE VIEW

R5

FOR KIDS
AGES
5-12



STRUCTURE # R50669B5A
PROJECT # R50669B5A
DATE 9/22/2023

R50669B5A

Project # R50669B5A

Date 9/22/2023

| Item / Part Number | Description | Qty |
|--------------------|---|-----|
| [R50669B5A] | | |
| HS-1004-R | Collars | 127 |
| GF-7002 | Dome Cap, R5 | 3 |
| S-1011-R5-11ft | Post, 11ft R5 | 9 |
| S-1014-R5-14ft | Post, 14ft R5 | 10 |
| S-1015-R5-15ft | Post, 15ft R5 | 6 |
| S-1101-R5 | Square Deck | 1 |
| S-1102-R5 | Tri-Deck | 3 |
| S-1103-R5 | Hex Deck, Half (5 Post) | 1 |
| S-1106-R5 | Hex Deck, Half (4 Post) | 2 |
| S-1110-R | Filler, Universal (12in) | 1 |
| S-1206-36R5 | ADA Stairs, 36in Rise w/ Walls | 1 |
| S-1209-36-R5 | Transfer Station, 48in-L | 1 |
| S-1234-8R | Climber, Spiral Step 90-96in | 1 |
| S-1248-8 | Climber, Poly Climbing Wall 90-96in | 1 |
| S-1293-R5 | Net Tower Ladder | 5 |
| S-1298-6R5 | Climber, Cord 72in | 1 |
| S-1301-36875R5 | Steel Wall (Above Panel) | 3 |
| S-1301-R5-MT | Wall w/ Wheel | 1 |
| S-1303-R5 | Single Slide SitDown Hood | 1 |
| S-1303-TW-R5 | Twister Entry Panel w/ Hood | 2 |
| S-1306-R5 | Double Slide SitDown Hood | 1 |
| S-1309-2-R5 | Half Walls (Pair) R5 | 1 |
| S-1309-R5 | Half Walls (Single, Right) | 1 |
| S-1310-R5 | Transition Wall | 2 |
| S-1403-R5 | End Access Ladder (3-Rung) | 1 |
| S-1405-R-R5 | Traverse, Horizontal Ladder (S-Shaped, Right) | 1 |
| S-1500-3IR5 | Crawl Tube, 24in Incl. (3-Sect., 72in High) | 1 |
| S-1525-R5 | Link, Ramp (Inclined 24in) | 1 |
| S-1535-3DTG-R5 | Climber, Crawl-Netix 36in (DTG, 36) | 1 |
| S-1536-CTU | Climber, Crawl-Netix Catwalk (UP) | 1 |
| S-1602-R5 | Bubble Panel | 1 |
| S-1617-R5 | Window Panel | 1 |
| S-1634-R5 | Labyrinth Panel | 1 |
| S-1639-R5 | Clubhouse | 1 |
| S-16520-R5I | Composer Panel | 1 |
| S-1664-R5 | Panel Pal, Tic-Tac-Toe | 1 |

| Item / Part Number | Description | Qty |
|--------------------|-----------------------------------|-----|
| S-1702-4R5 | Slide, Wave 48in (Double) | 1 |
| S-1704-6 | Slide, Wave 72in (Single) | 1 |
| S-1710-6-LLL | Slide, Twister 72in (L3) | 1 |
| S-1710-8-RRRSL | Slide, Twister 96in (R-R-R-S-L) | 1 |
| S-18030-4R5 | Shade Canopy, 4-Post Orbital | 1 |
| S-18030-6 | Shade Canopy, 6-Post Orbital | 3 |
| S-1812-R5 | Driver Wheel (Post Mounted) | 1 |
| S-1926-LR5 | Center Access Hex Net Deck (96in) | 1 |
| S-1937-R5 | Crunch Handle | 1 |
| S-1945-R5 | Orbit Wheel | 1 |