

R501F79EA

TOP VIEW

ADA ACCESSIBILITY GUIDELINE - ADAAG CONFORMANCE

ELEVATED	ACCESSIBLE	RAMP ACCESSIBLE	GROUND	TYPES
37	37/9	20/9	12/0	5/0

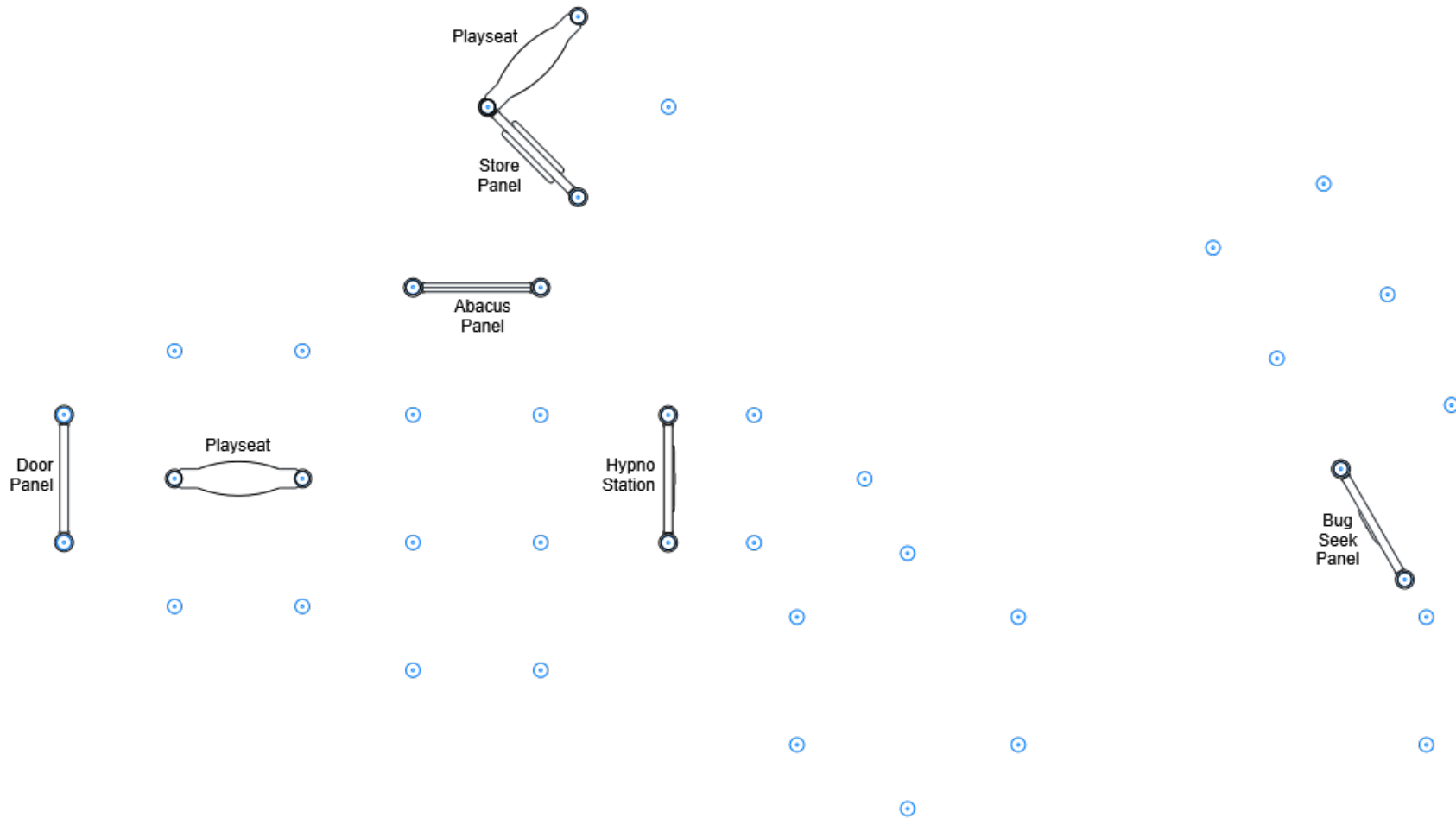


FOR KIDS
AGES
5-12

GENERAL NOTES:

This conceptual plan is based on information provided prior to construction. Detailed site information, including the following, should be obtained, evaluated, and utilized in the final project design. Exact site dimensions, topography, existing utilities, soil conditions and drainage solutions.

WARNING: Accessible safety surfacing material is required beneath and around this equipment that has a critical height value (Fall Height) appropriate for the highest accessible part of this equipment. Refer to the CPSC'S Handbook For Public Playground Safety, Section 4: Surfacing.



STRUCTURE#: R501F79EA

PROJECT#: R501F79EA

DATE: 1/8/2020 | DRAWN BY: Jefferson

MIN. USE ZONE: 76' x 67'

PLAYCRAFT REP:

Playcraft Direct, Inc.



R501F79EA
TOP VIEW

ADA ACCESSIBILITY GUIDELINE - ADAAG CONFORMANCE

ELEVATED	ACCESSIBLE	RAMP ACCESSIBLE	GROUND	TYPES
37	37/9	20/9	12/0	5/0

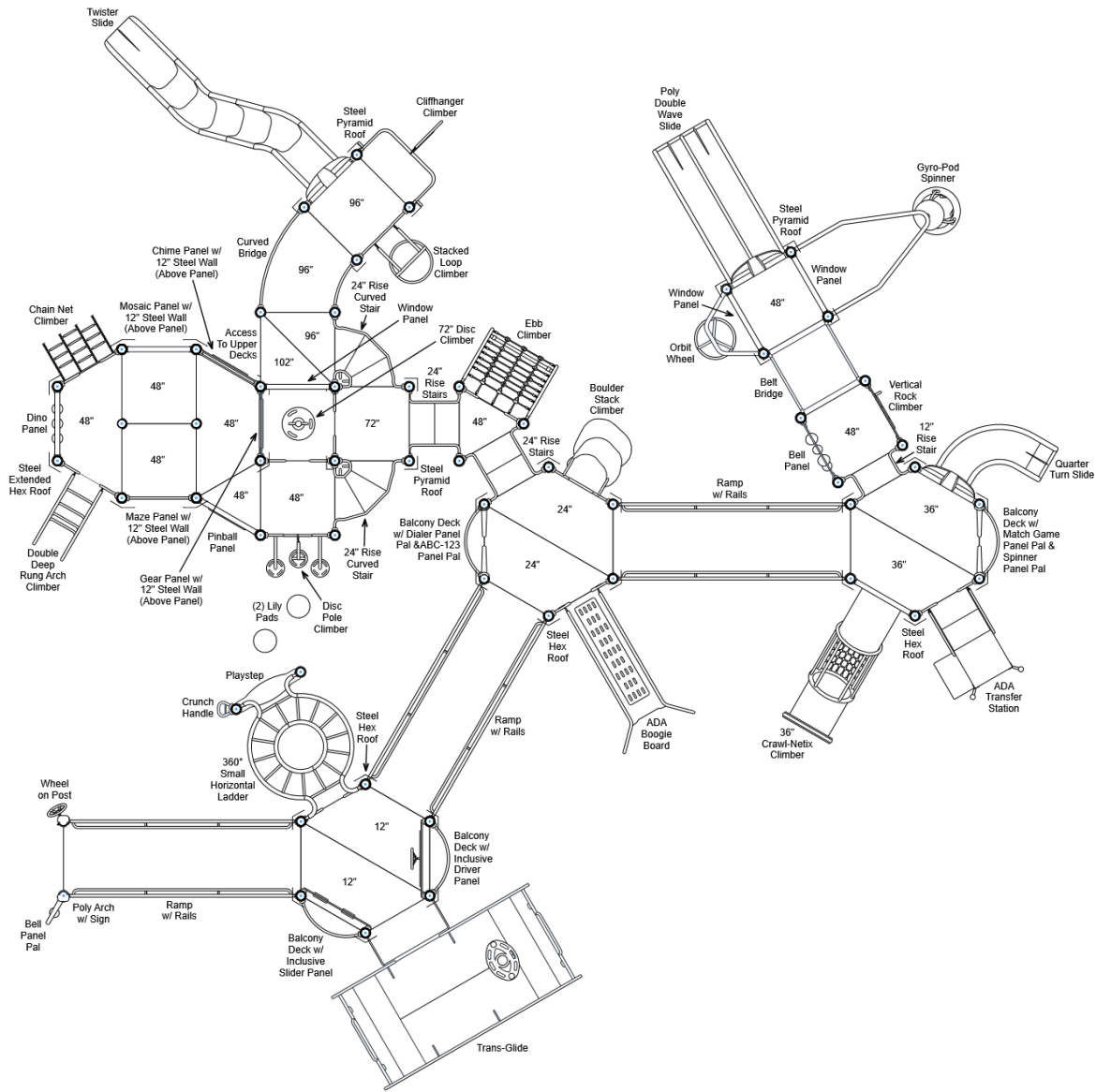
R5

FOR KIDS
AGES
5-12

GENERAL NOTES:

This conceptual plan is based on information provided prior to construction. Detailed site information, including the following, should be obtained, evaluated, and utilized in the final project design. Exact site dimensions, topography, existing utilities, soil conditions and drainage solutions.

WARNING: Accessible safety surfacing material is required beneath and around this equipment that has a critical height value (Fall Height) appropriate for the highest accessible part of this equipment. Refer to the CPSC's Handbook For Public Playground Safety, Section 4: Surfacing.



STRUCTURE#: R501F79EA

PROJECT#: R501F79EA

DATE: 1/8/2020 | DRAWN BY: Jefferson

MIN. USE ZONE: 76' x 67'

PLAYCRAFT REP:
Playcraft Direct, Inc.



R501F79EA
TOP VIEW

ADA ACCESSIBILITY GUIDELINE - ADAAG CONFORMANCE

ELEVATED	ACCESSIBLE	RAMP ACCESSIBLE	GROUND	TYPES
37	37/9	20/9	12/0	5/0

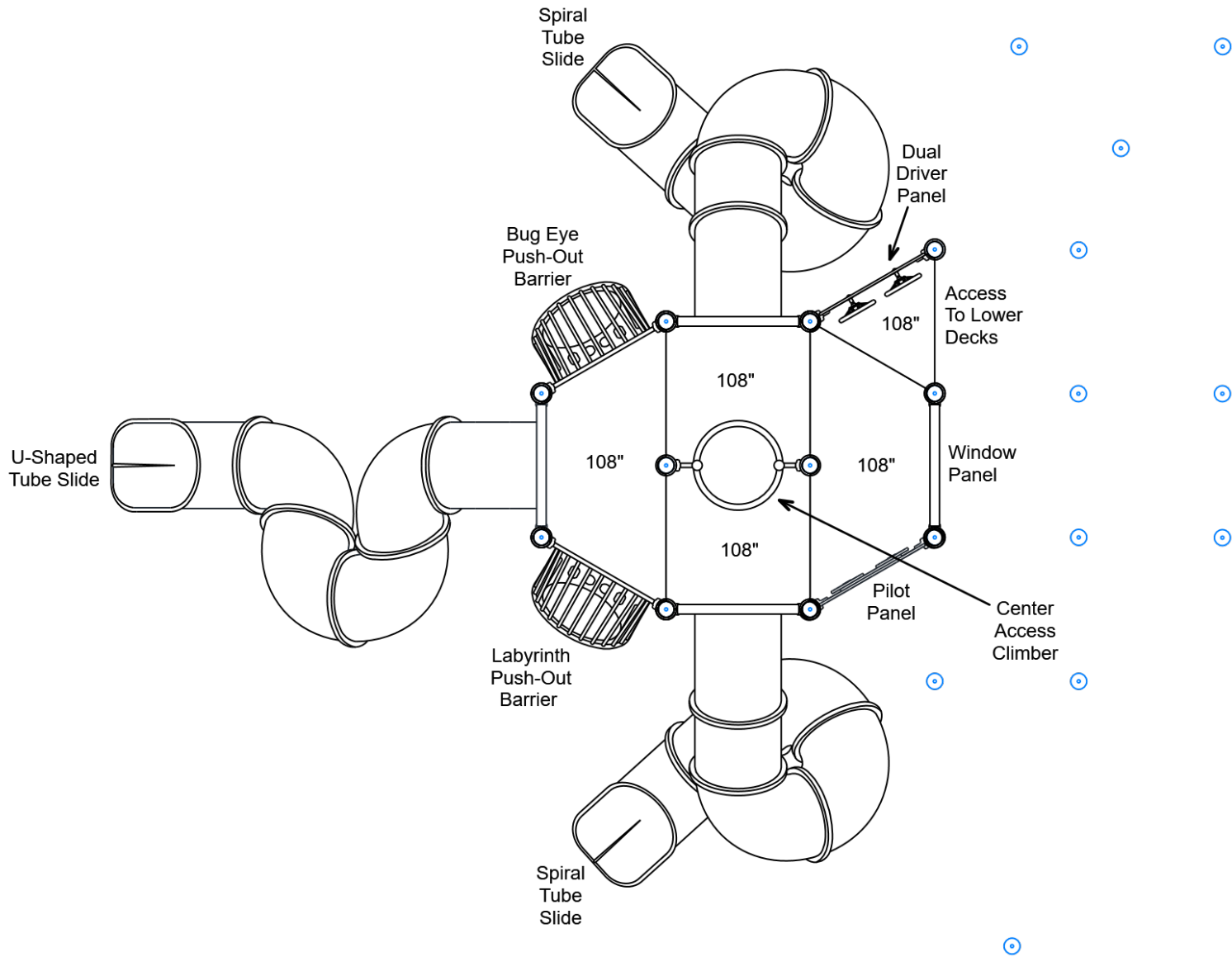
R5

FOR KIDS
AGES
5-12

GENERAL NOTES:

This conceptual plan is based on information provided prior to construction. Detailed site information, including the following, should be obtained, evaluated, and utilized in the final project design. Exact site dimensions, topography, existing utilities, soil conditions and drainage solutions.

WARNING: Accessible safety surfacing material is required beneath and around this equipment that has a critical height value (Fall Height) appropriate for the highest accessible part of this equipment. Refer to the CPSC'S Handbook For Public Playground Safety, Section 4: Surfacing.



STRUCTURE#: R501F79EA
PROJECT#: R501F79EA
DATE: 1/8/2020 | DRAWN BY: Jefferson

MIN. USE ZONE: 76' x 67'

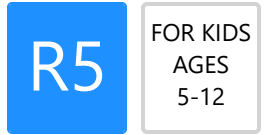
PLAYCRAFT REP:
Playcraft Direct, Inc.



R501F79EA SITE PLAN

ADA ACCESSIBILITY GUIDELINE - ADAAG CONFORMANCE

ELEVATED	ACCESSIBLE	RAMP ACCESSIBLE	GROUND	TYPES
37	37/9	20/9	12/0	5/0

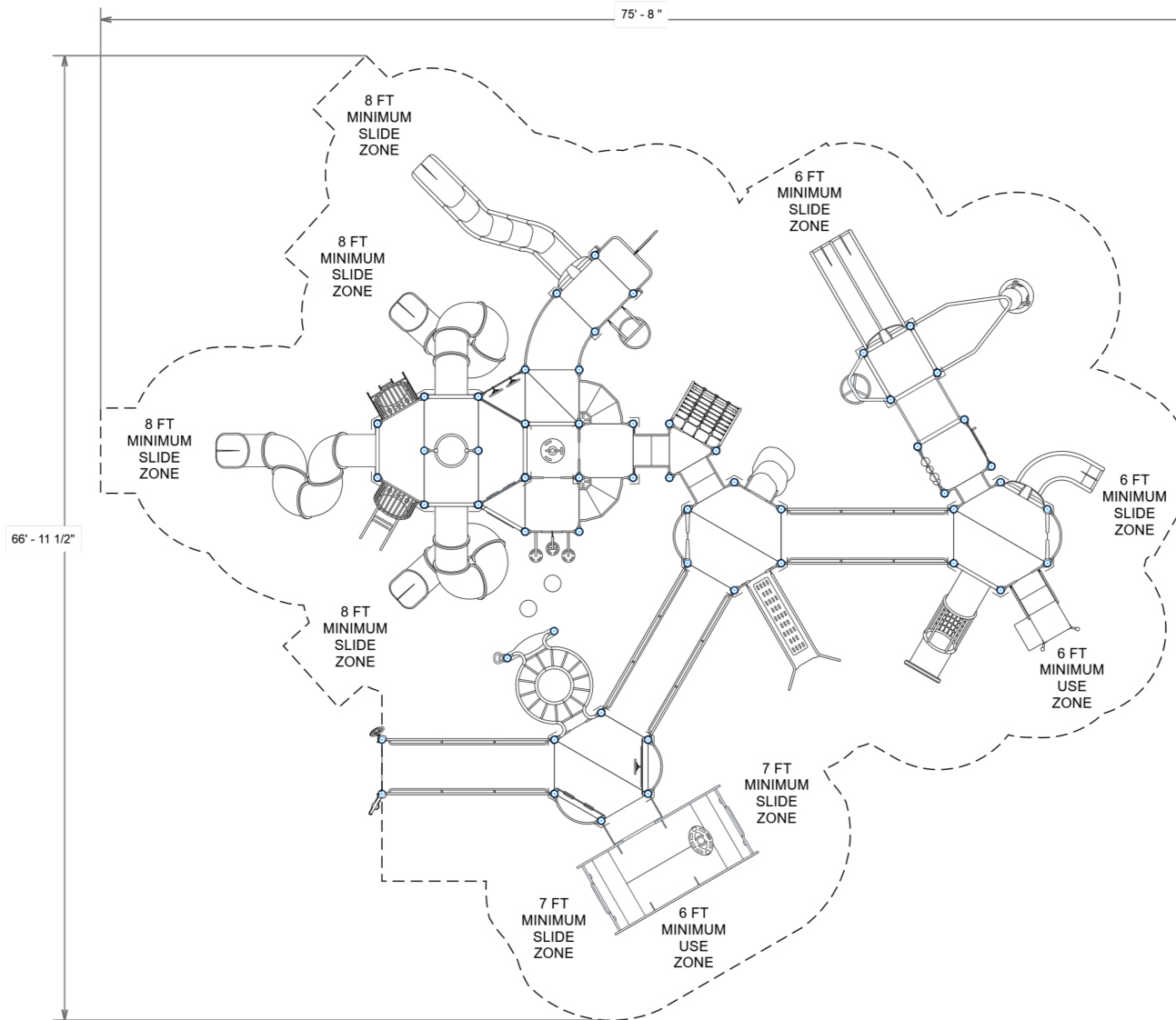


GENERAL NOTES:

This Preliminary Site Plan is based on measurements that were provided in the initial planning phase. All dimensions must be verified prior to the submission of a purchase order. Playcraft Systems will not be held responsible for any discrepancies between actual dimensions and dimensions submitted in the planning phase.

The Minimum Use Zone for a play structure is based on the product design at the time of proposal. Components and structure designs may be subject to change which may affect dimensions. Therefore, before preparing the site, we strongly recommend obtaining final drawings from the factory (available after the order is placed and included in the Assembly Manual).

WARNING: Accessible safety surfacing material is required beneath and around this equipment that has a critical height value (Fall Height) appropriate for the highest accessible part of this equipment. Refer to the CPSC's Handbook For Public Playground Safety, Section 4: Surfacing.



PROJECT#: R501F79EA

DATE: 1/8/2020 | DRAWN BY: Jefferson

MIN. USE ZONE: 76' x 67'

PLAYCRAFT REP:

Playcraft Direct, Inc.



R501F79EA
SW VIEW

R5

FOR KIDS
AGES
5-12



STRUCTURE#: R501F79EA

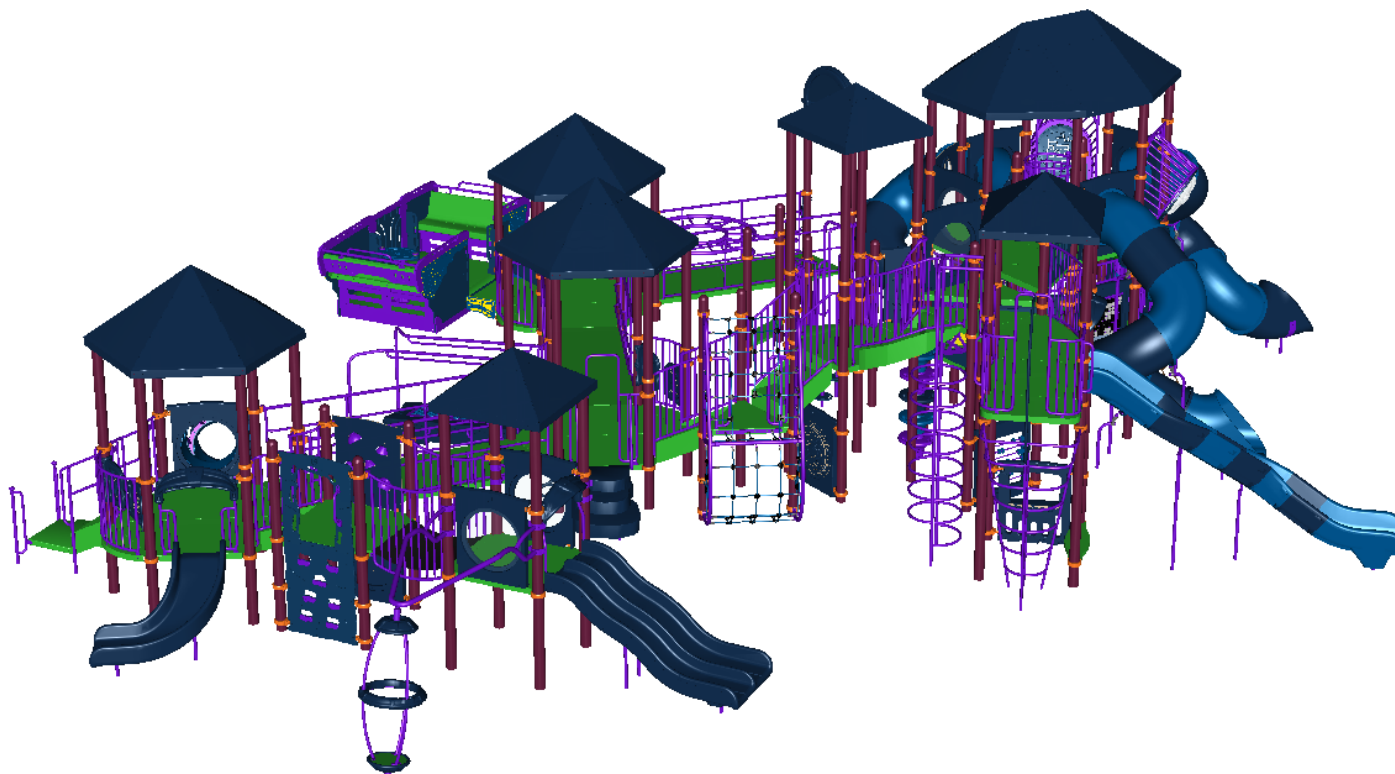
PROJECT#: R501F79EA

DATE: 1/8/2020 | DRAWN BY: Jefferson

R501F79EA
NE VIEW

R5

FOR KIDS
AGES
5-12



STRUCTURE#: R501F79EA

PROJECT#: R501F79EA

DATE: 1/8/2020 | DRAWN BY: Jefferson





Bill of Materials

R501F79EA

Project# R501F79EA

1/8/2020

Item	Description	Quantity
R501F79EA		
HS-1004-R	Collars	222
16-12-0002	ADA Stairs, 24in Rise w/ Walls (Curved)	2
GF-7002	Dome Cap, R5	15
S-1010-R5-10ft	Post, 10ft R5	2
S-1011-R5-11ft	Post, 11ft R5	13
S-1012-R5-12ft	Post, 12ft R5	2
S-1013-R5-13ft	Post, 13ft R5	2
S-1014-R5-14ft	Post, 14ft R5	16
S-1015-R5-15ft	Post, 15ft R5	1
S-1016-R5-16ft	Post, 16ft R5	3
S-1018-R5-18ft	Post, 18ft R5	4
S-1019-R5-19ft	Post, 19ft R5	12
S-1101-R5	Square Deck	7
S-1102-R5	Tri-Deck	3
S-1103-R5	Hex Deck, Half (5 Post)	4
S-1105-R5	Half Deck	2
S-1106-R5	Hex Deck, Half (4 Post)	6
S-1109-R5	Balcony Deck	4
S-1206-12R5	ADA Stairs, 12in Rise w/ Walls	1
S-1206-24R5	ADA Stairs, 24in Rise w/ Walls (Short)	2
S-1208-R-RAIL12	Ramp 144in (Ground w/ Rails, Inclined)	1
S-1208-R-RAIL24	Ramp 144in (06-12in High w/ Rails, Inclined)	1
S-1208-R-RAIL36	Ramp 144in (18-24in High w/ Rails, Inclined)	1
S-1209-24RHW	Transfer Station, 36in-L (RHW)	1
S-1221-4	Climber, Chain Net 42-48in	1



Bill of Materials (continued)

Item	Description	Quantity
S-1224-8R	Climber, Stacked Loop 90-96in	1
S-1233-6-HW	Climber, Disc 66-72in (w/ HW)	1
S-1237-4R5	Climber, Vertical Rock 42-48in	1
S-1243-4	Climber, Disc Pole 42-48in	1
S-1261-R5E	Climber, Ebb	1
S-1275-4R5	Climber, Double Deep Rung Arch 42-48in	1
S-12891-DD5R5	Center Access Deck (DTD, 60in)	1
S-1289-8R5	Climber, Cliffhanger 90-96in	1
S-1290-D3-R5	Climber, Boulder Stack 18-24in	1
S-1301-12R5	Wall, Steel (12in)	5
S-1303-R5	Single Slide SitDown Hood	1
S-1303-TW-R5	Twister Entry Panel w/ Hood	1
S-1306-R5	Double Slide SitDown Hood	1
S-1309-2-R5	Half Walls (Pair) R5	4
S-1310-R5	Transition Wall	1
S-1362-16132-R5	Push-Out Barrier (Bug Eye)	1
S-1362-16134-R5	Push-Out Barrier (Labyrinth)	1
S-1414-6	Lily Pad Step 06in	2
S-1420-R5	Traverse, Horizontal Ladder (Small, 360 Deg)	1
S-1504-R5	Bridge, Belt (45in)	1
S-1511-R5	Bridge, Curved	1
S-1535-3DTG-R5	Climber, Crawl-Netix 36in	1
S-1604-R5	Chime Panel	1
S-1606-R5	Dino Panel	1
S-1607-R5	Maze Panel	1
S-1615-R5	Store Panel	1
S-1617-R5	Window Panel	4
S-1618-Bug-R5G	Seek Panel (Bug)	1
S-1625-2R5	Dual Driver Panel	1
S-1627-R5G	Abacus Panel	1



Bill of Materials (continued)

Item	Description	Quantity
S-1628-R5	Inclusive Panel, Driver	1
S-1629-R5	Inclusive Panel, Slider	1
S-1631-R5	Pinball Panel	1
S-1643-R5	Pilot Panel	1
S-1644-R5	Gear Panel	1
S-16506-R5	Hypno Station Panel	1
S-1654-R5	Door Panel	1
S-1661-R5	Panel Pal, Bell	1
S-1662-R5	Panel Pal, ABC-123	1
S-1665-R5	Panel Pal, Dialer	1
S-1666-R5	Panel Pal, Spinner	1
S-1668-R5	Panel Pal, Match Game	1
S-1679-R5	Bell Panel	1
S-1685-R5	Mosaic Panel	1
S-1702-4R5	Slide, Wave 48in (Double)	1
S-1705-3	Slide, Quarter Turn 36in	1
S-1707-9SPR5	Slide, Tube 108in (Spiral, Left)	1
S-1707-9SPR5	Slide, Tube 108in (Spiral, Right)	1
S-1707-9U-R5	Slide, Tube 108in (U-Shaped, Left)	1
S-1710-8-LSSRS	Slide, Twister 96in (L-S-S-R-S)	1
S-1803-R5STL	Metal Roof, Hex	3
S-1804-SIGN-R5	Poly Arch (w/ Sign)	1
S-1806-R5STL	Metal Roof, Hex (Extended)	1
S-1807-R5STL	Metal Roof, Pyramid	3
S-1812-R5	Driver Wheel (Post Mounted)	1
S-1937-R5	Crunch Handle	1
S-1941-R5-ADA	Boogie Board ADA (w/ Half Walls)	1
S-1945-R5	Orbit Wheel	1
S-1962-R5	Playseat	3
S-1974-R5	Gyro-Pod Spinner	1



Bill of Materials (continued)

Item	Description	Quantity
S-1975-R5	Trans-Glide	1
HS-1100-2	Deck to Deck Hardware	12