

R35PC7858

TOP VIEW

ADA ACCESSIBILITY GUIDELINE - ADAAG CONFORMANCE

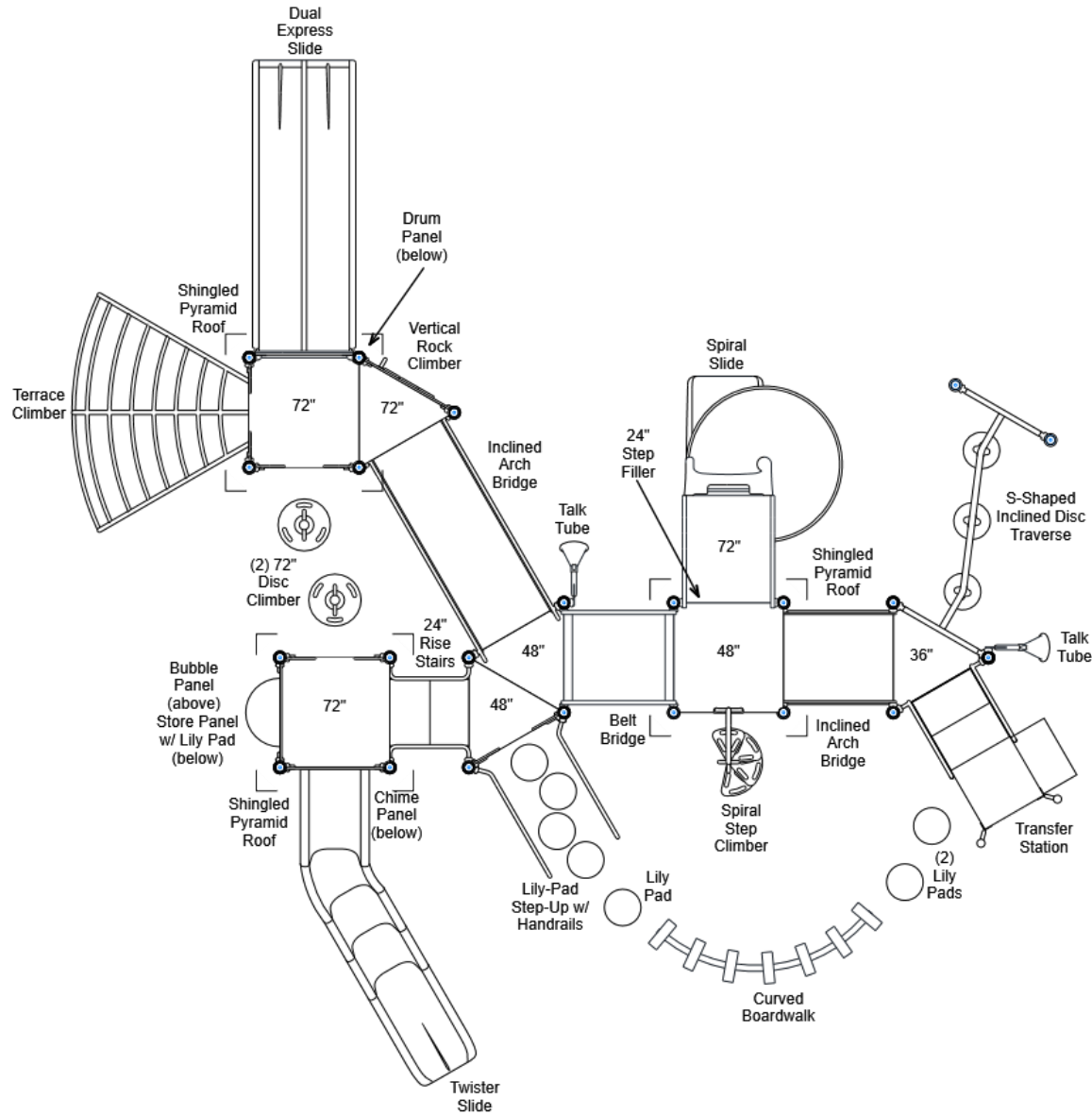
ELEVATED	ACCESSIBLE	RAMP ACCESSIBLE	GROUND	TYPES
12	11/6	0	7/4	3/3



GENERAL NOTES:

This conceptual plan is based on information provided prior to construction. Detailed site information, including the following, should be obtained, evaluated, and utilized in the final project design. Exact site dimensions, topography, existing utilities, soil conditions and drainage solutions.

WARNING: Accessible safety surfacing material is required beneath and around this equipment that has a critical height value (Fall Height) appropriate for the highest accessible part of this equipment. Refer to the CPSC's Handbook For Public Playground Safety, Section 4: Surfacing.



STRUCTURE#: R35PC7858

PROJECT#: R35PC7858

DATE: 4/21/2020 | DRAWN BY:

MIN. USE ZONE: 45' x 45'

PLAYCRAFT REP:

Playcraft Direct, Inc.



R35PC7858 SITE PLAN

ADA ACCESSIBILITY GUIDELINE - ADAAG CONFORMANCE

ELEVATED	ACCESSIBLE	RAMP ACCESSIBLE	GROUND	TYPES
12	11/6	0	7/4	3/3

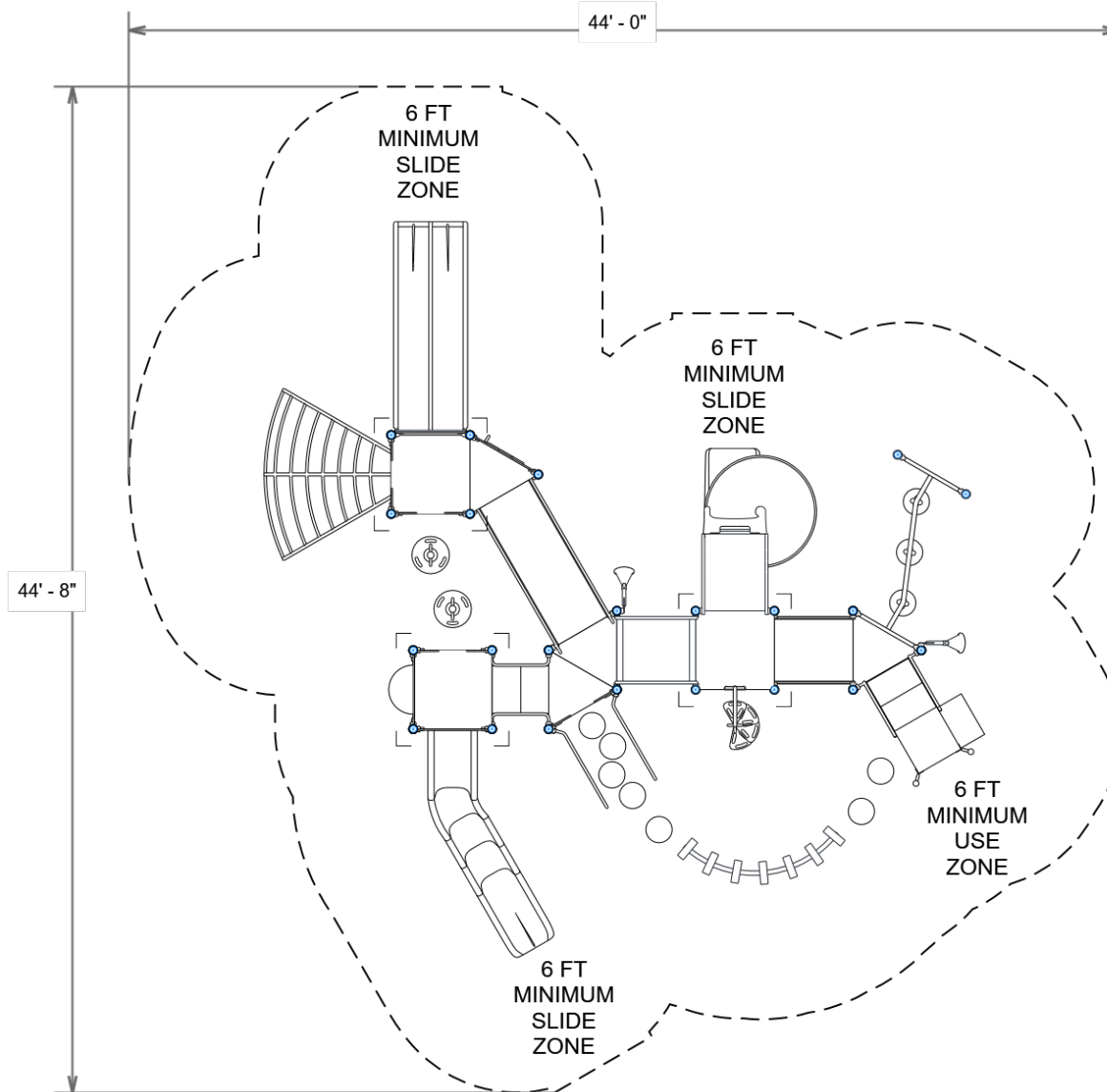


GENERAL NOTES:

This Preliminary Site Plan is based on measurements that were provided in the initial planning phase. All dimensions must be verified prior to the submission of a purchase order. Playcraft Systems will not be held responsible for any discrepancies between actual dimensions and dimensions submitted in the planning phase.

The Minimum Use Zone for a play structure is based on the product design at the time of proposal. Components and structure designs may be subject to change which may affect dimensions. Therefore, before preparing the site, we strongly recommend obtaining final drawings from the factory (available after the order is placed and included in the Assembly Manual).

WARNING: Accessible safety surfacing material is required beneath and around this equipment that has a critical height value (Fall Height) appropriate for the highest accessible part of this equipment. Refer to the CPSC'S Handbook For Public Playground Safety, Section 4: Surfacing.



PROJECT#: R35PC7858

DATE: 4/21/2020 | DRAWN BY:

MIN. USE ZONE: 45' x 45'

PLAYCRAFT REP:

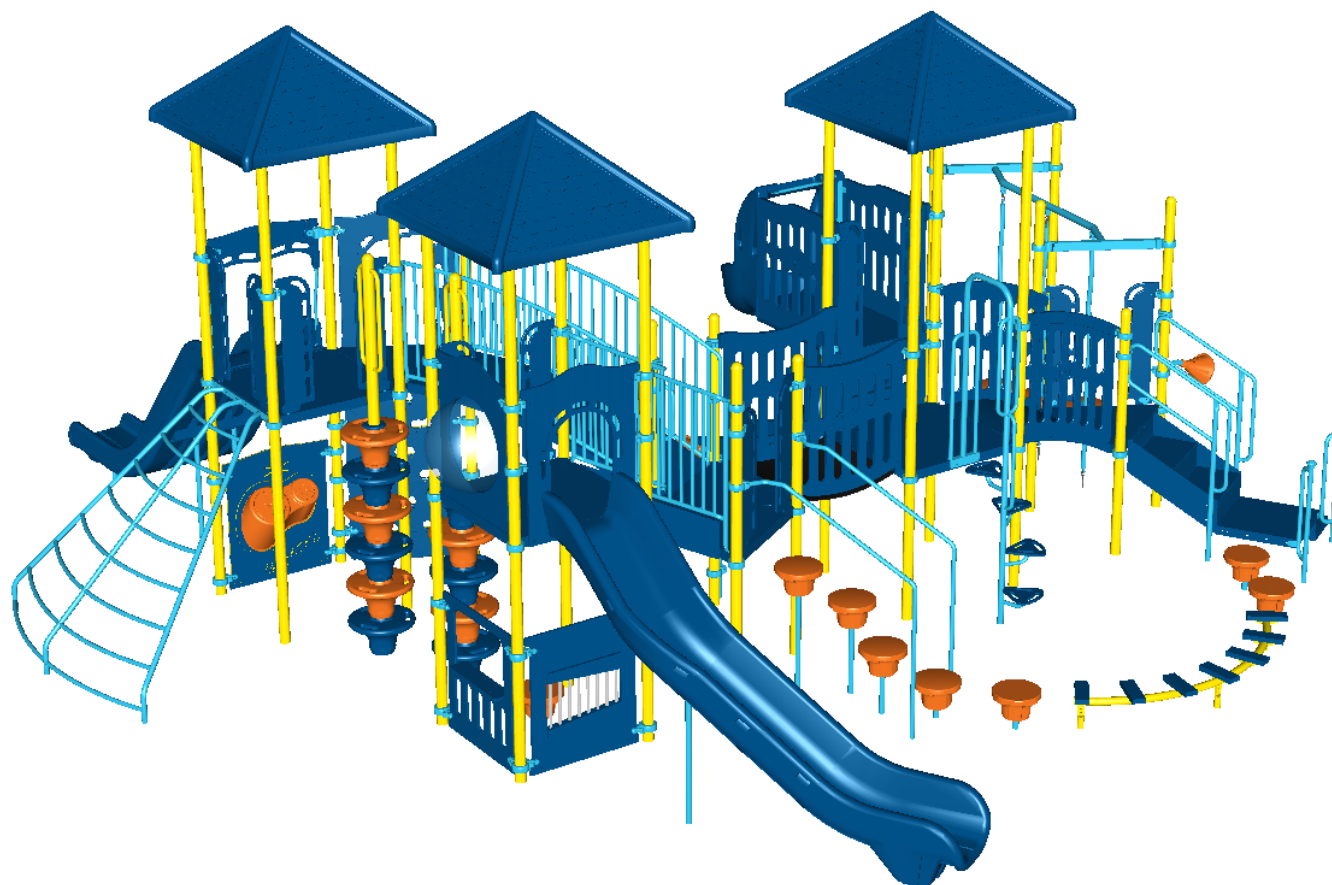
Playcraft Direct, Inc.



R35PC7858
SW VIEW

R35

FOR KIDS
AGES
5-12

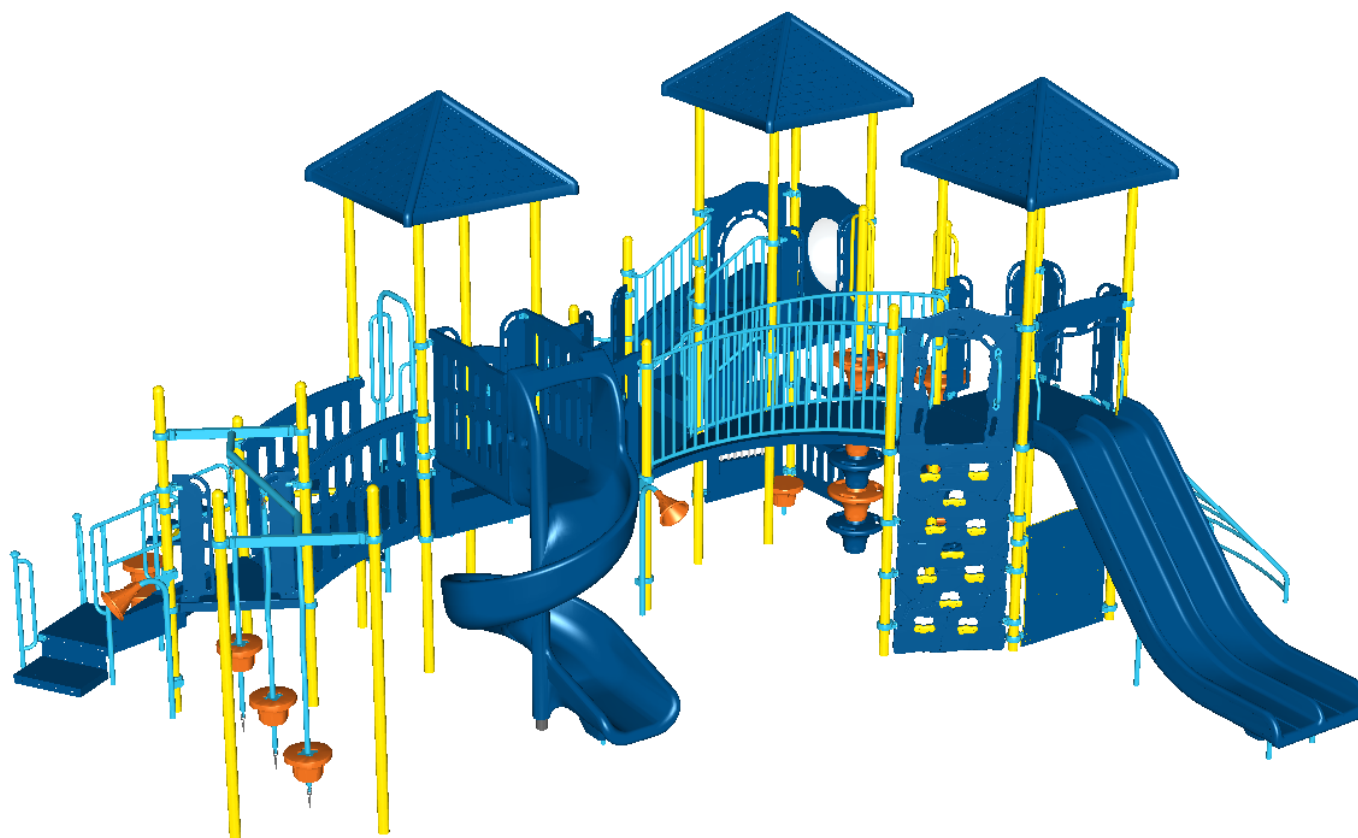


STRUCTURE#: R35PC7858
PROJECT#: R35PC7858
DATE: 4/21/2020 | DRAWN BY:

R35PC7858
NE VIEW

R35

FOR KIDS
AGES
5-12



STRUCTURE#: R35PC7858

PROJECT#: R35PC7858

DATE: 4/21/2020 | DRAWN BY:





Bill of Materials

R35PC7858

Project# R35PC7858

4/21/2020

Item	Description	Quantity
R35PC7858		
HS-1004-R35	Collars	77
A2-2430	Boardwalk, Curved (90 Degree)	1
GG-8135	Dome Cap, R3.5	10
S-1010-R35-10ft	Post, 10ft R3.5	1
S-1011-R35-11ft	Post, 11ft R3.5	2
S-1012-R35-12ft	Post, 12ft R3.5	6
S-1013-R35-13ft	Post, 13ft R3.5	1
S-1016-R35-16ft	Post, 16ft R3.5	12
S-1101-R35	Square Deck	3
S-1102-R35	Tri-Deck	4
S-1206-24R35	ADA Stairs, 24in Rise w/ Walls	1
S-1209-24-R35	Transfer Station, 36in-R	1
S-1233-6-HW	Climber, Disc 66-72in (w/ HW)	2
S-1234-4R35	Climber, Spiral Step 42-48in	1
S-1237-6R35	Climber, Vertical Rock 66-72in	1
S-1240-6	Climber, Terrace 66-72in	1
S-1309-2-R35	Half Walls (Pair) R35	4
S-1316-R35	Twister Entry Panel	1
S-1414	Lily Pad Seat	4
S-1414-4HHR35	Climber, Step-Up 48in (Lily-Pad, w/ Hand Rails)	1
S-1419-R35SIL	Traverse - Inclined Disc 36in (S-Shaped, Left)	1
S-1504-R35	Bridge, Belt (42in)	1
S-1514-84R35	Bridge, Inclined Arch (84in)	1
S-1514-R35	Bridge, Inclined Arch	1
S-1602-R35	Bubble Panel	1



PLAYCRAFT®
S Y S T E M S

**Bill of Materials
(continued)**

Item	Description	Quantity
S-1604-R35G	Chime Panel	1
S-1615-R35G	Store Panel	1
S-1658-R35I	Drum Panel	1
S-1702-6R35	Slide, Double 66-72in (Dual Express)	1
S-1706-24R35	Slide, Spiral 72in (48in Deck Height, 24in Filler)	1
S-1710-6-LSS	Slide, Twister 72in (L-S2)	1
S-1807-R35	Roof, Square Pyramid (Shingled)	3
S-1910-R35	Talk Tube (Post Mounted, Left)	1
S-1910-R35	Talk Tube (Post Mounted, Right)	1
HS-1100-2	Deck to Deck Hardware	3