

**R35C14CFA**  
**TOP VIEW**

## ADA ACCESSIBILITY GUIDELINE - ADAAG CONFORMANCE

ELEVATED	ACCESSIBLE	RAMP ACCESSIBLE	GROUND	TYPES
16	16/8	0	7/5	3/3

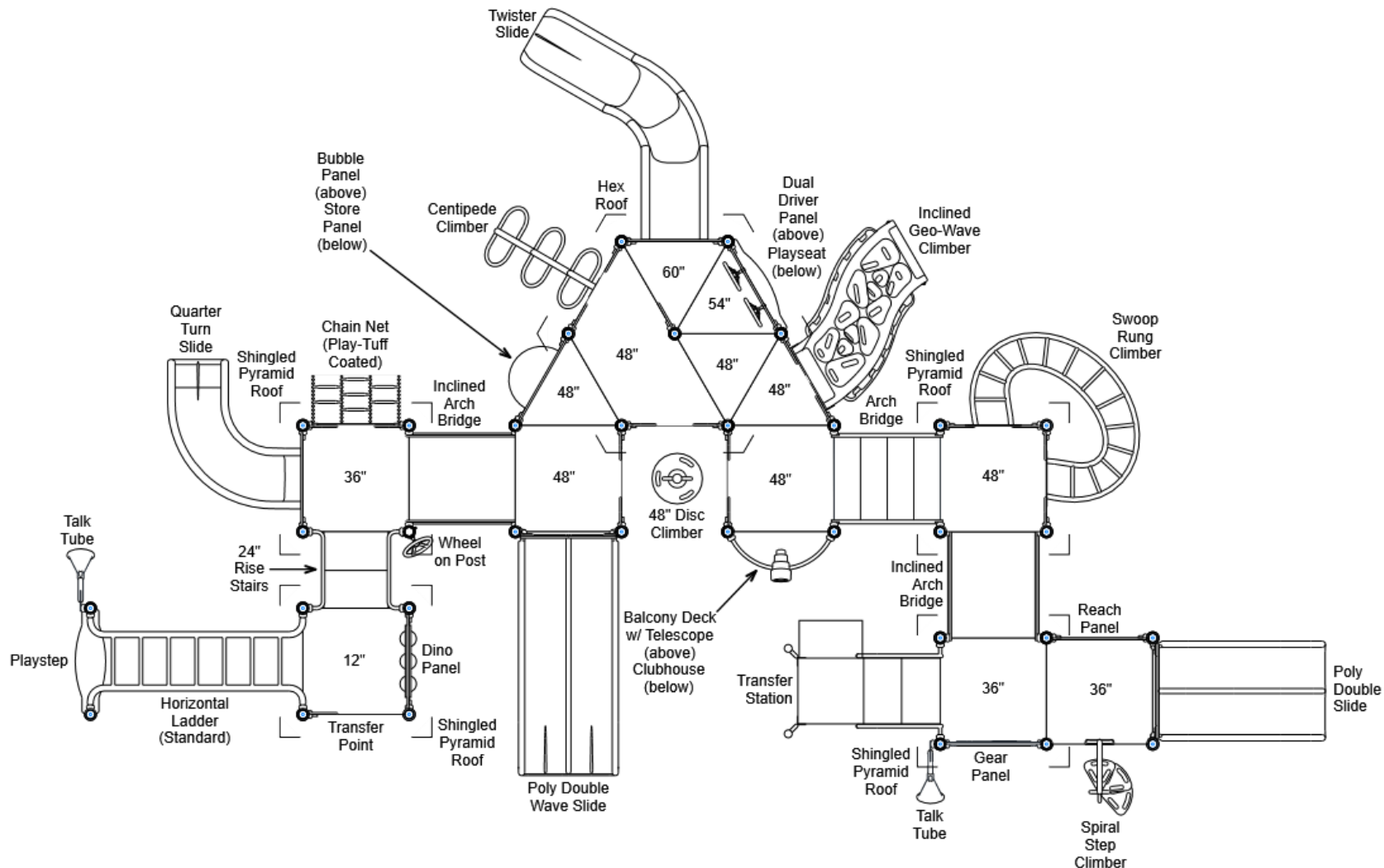
R35

FOR KIDS  
AGES  
2-5

**GENERAL NOTES:**

This conceptual plan is based on information provided prior to construction. Detailed site information, including the following, should be obtained, evaluated, and utilized in the final project design. Exact site dimensions, topography, existing utilities, soil conditions and drainage solutions.

**WARNING:** Accessible safety surfacing material is required beneath and around this equipment that has a critical height value (Fall Height) appropriate for the highest accessible part of this equipment. Refer to the CPSC'S Handbook For Public Playground Safety, Section 4: Surfacing.



STRUCTURE#: R35C14CFA

PROJECT#: R35C14CFA

DATE: 12/10/2019 | DRAWN BY: Nathaniel

MIN. USE ZONE: 54' x 39'

PLAYCRAFT REP:

**Playcraft Direct, Inc.**

# R35C14CFA SITE PLAN

ADA ACCESSIBILITY GUIDELINE - ADAAG CONFORMANCE

ELEVATED	ACCESSIBLE	RAMP ACCESSIBLE	GROUND	TYPES
16	16/8	0	7/5	4/3

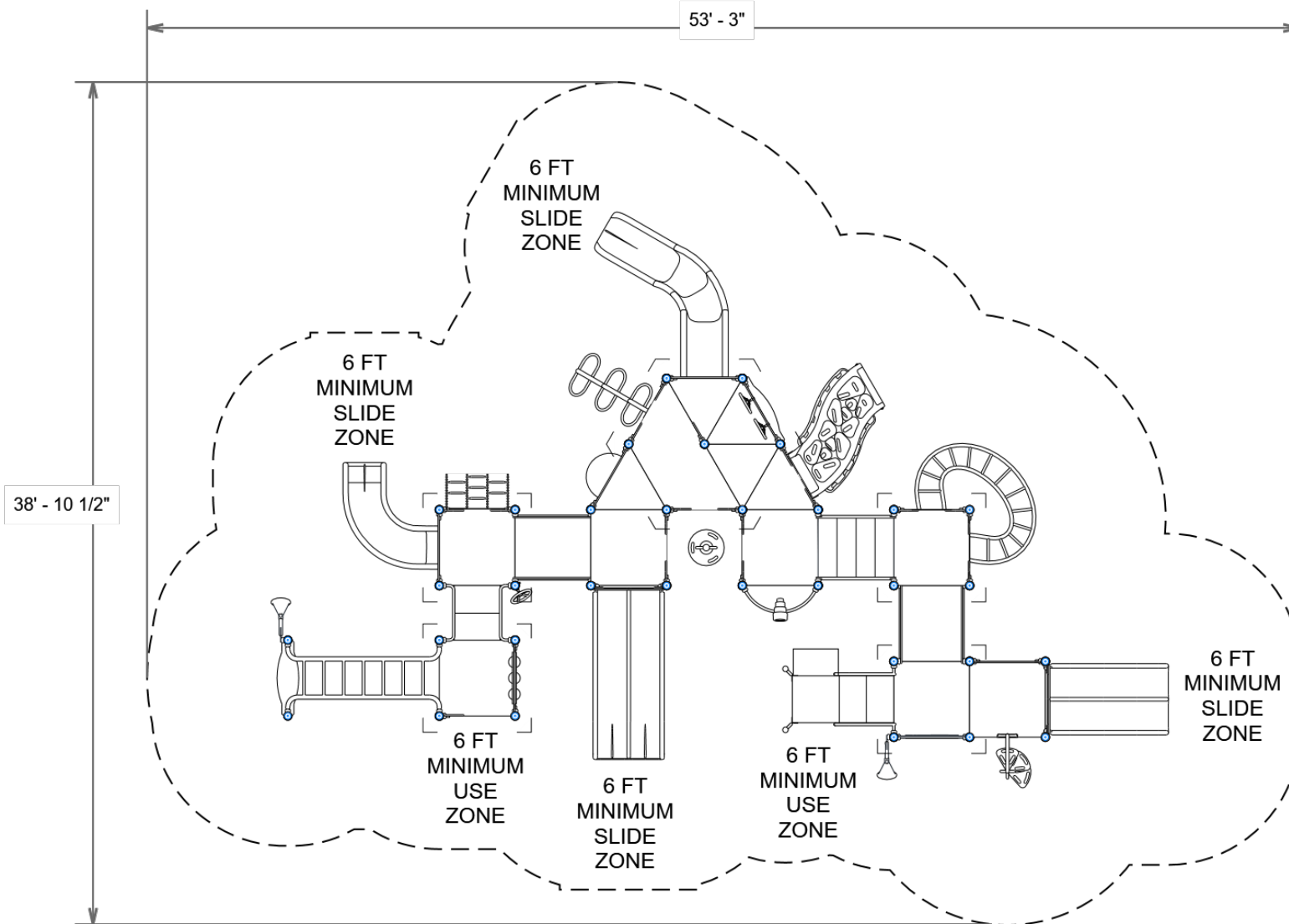


## GENERAL NOTES:

This Preliminary Site Plan is based on measurements that were provided in the initial planning phase. All dimensions must be verified prior to the submission of a purchase order. Playcraft Systems will not be held responsible for any discrepancies between actual dimensions and dimensions submitted in the planning phase.

The Minimum Use Zone for a play structure is based on the product design at the time of proposal. Components and structure designs may be subject to change which may affect dimensions. Therefore, before preparing the site, we strongly recommend obtaining final drawings from the factory (available after the order is placed and included in the Assembly Manual).

**WARNING:** Accessible safety surfacing material is required beneath and around this equipment that has a critical height value (Fall Height) appropriate for the highest accessible part of this equipment. Refer to the CPSC'S Handbook For Public Playground Safety, Section 4: Surfacing.



PROJECT#: R35C14CFA

DATE: 12/10/2019 | DRAWN BY: Nathaniel

MIN. USE ZONE: 54' x 39'

PLAYCRAFT REP:

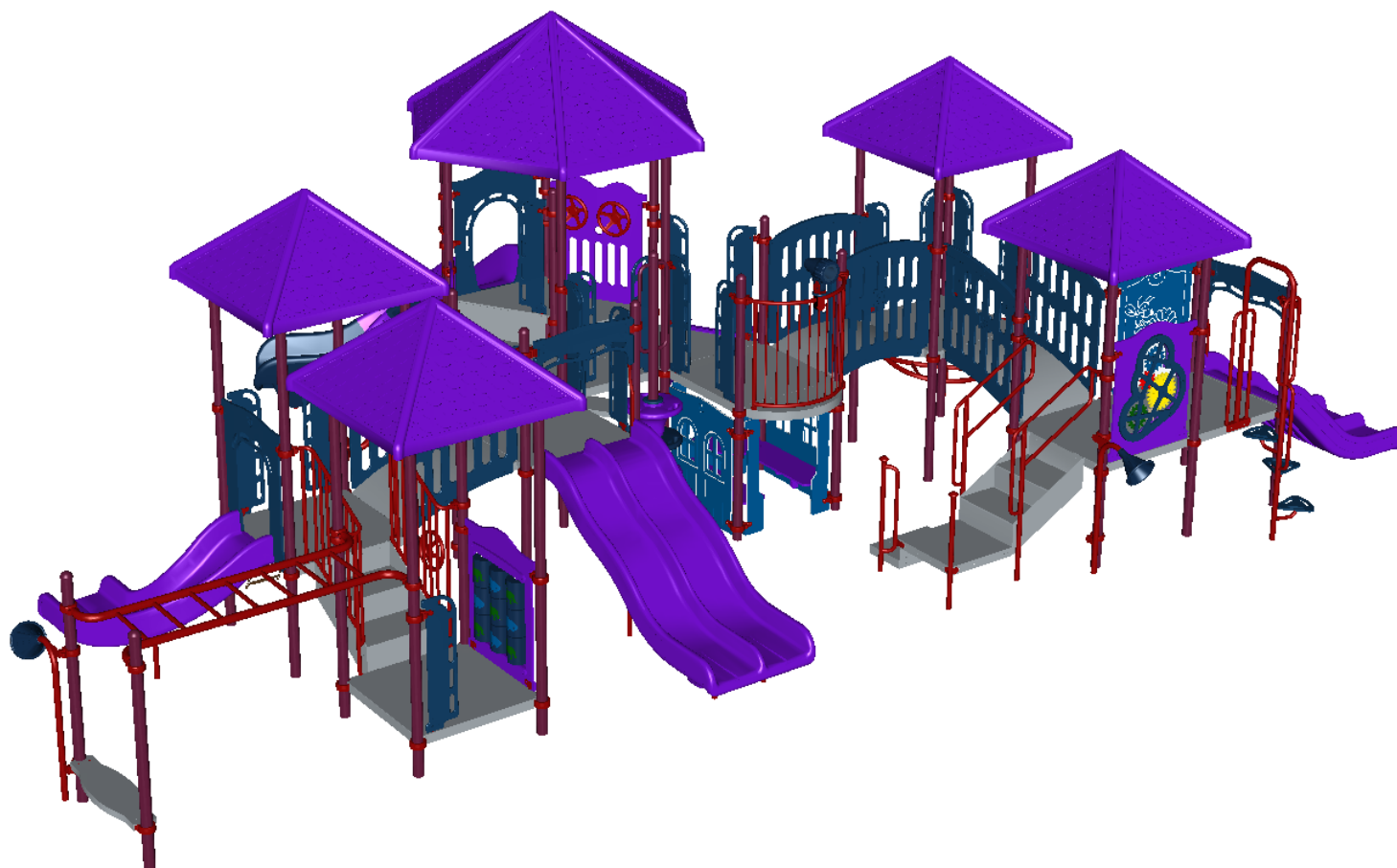
**Playcraft Direct, Inc.**



**R35C14CFA**  
**SW VIEW**

**R35**

FOR KIDS  
AGES  
2-5



STRUCTURE#: R35C14CFA  
PROJECT#: R35C14CFA  
DATE: 12/10/2019 | DRAWN BY: Nathaniel

**PLAYCRAFT**  
SYSTEMS

**R35C14CFA**  
**NE VIEW**

**R35**

FOR KIDS  
AGES  
2-5



STRUCTURE#: R35C14CFA  
PROJECT#: R35C14CFA  
DATE: 12/10/2019 | DRAWN BY: Nathaniel



## Bill of Materials

R35C14CFA

Project# R35C14CFA

12/10/2019

Item	Description	Quantity
R35C14CFA		
HS-1004-R35	Collars	98
GG-8135	Dome Cap, R3.5	11
S-1009-R35-09ft	Post, 09ft R3.5	2
S-1010-R35-10ft	Post, 10ft R3.5	2
S-1011-R35-11ft	Post, 11ft R3.5	6
S-1012-R35-12ft	Post, 12ft R3.5	9
S-1013-R35-13ft	Post, 13ft R3.5	8
S-1014-R35-14ft	Post, 14ft R3.5	6
S-1101-R35	Square Deck	7
S-1102-R35	Tri-Deck	5
S-1103-R35	Hex Deck, Half (5 Post)	1
S-1109-R35-T	Balcony Deck w/ Telescope	1
S-1110-R	Filler, 12in	1
S-1206-24R35	ADA Stairs, 24in Rise w/ Walls	1
S-1209-24-R35	Transfer Station, 36in-L	1
S-1220-4	Climber, Centipede 42-48in	1
S-1221-3	Climber, Chain Net 30-36in	1
S-1233-4-HW	Climber, Disc 42-48in (w/ HW)	1
S-1234-3R35	Climber, Spiral Step 30-36in	1
S-1249-DGH	Climber, Incl. Geo-Wave 42-48in (Horiz, DTG Left)	1
S-1280-4R35	Climber, Swoop Rung 42-48in	1
S-1304-R35	Single Slide SitDown Wall	1
S-1309-2-R35	Half Walls (Pair) R35	6
S-1309-R35-L	Half Walls (Single, Left)	1
S-1309-R35-R	Half Walls (Single, Right)	1



## Bill of Materials (continued)

Item	Description	Quantity
S-1316-R35	Twister Entry Panel	1
S-1406-84R35	Traverse, Horizontal Ladder (7-Rung)	1
S-1501-R35	Bridge, Arch (42in)	1
S-1514-R35	Bridge, Inclined Arch	2
S-1602-R35	Bubble Panel	1
S-1606-R35	Dino Panel	1
S-1615-R35G	Store Panel	1
S-1625-2R35	Dual Driver Panel	1
S-1639-R35	Clubhouse	1
S-1644-R35	Gear Panel	1
S-1655-3R35	Reach Panel, 36in	1
S-1702-3R35	Slide, Double 36in	1
S-1702-4R35	Slide, Wave 48in (Double)	1
S-1705-3	Slide, Quarter Turn 36in	1
S-1710-5-LL	Slide, Twister 60in (L2)	1
S-1803-R35	Roof, Hex	1
S-1807-R35	Roof, Square Pyramid (Shingled)	4
S-1812-R35	Driver Wheel (Post Mounted)	1
S-1910-R35	Talk Tube (Post Mounted, Left)	1
S-1910-R35	Talk Tube (Post Mounted, Right)	1
S-1962-R35	Playseat (Double Post)	2
HS-1100-2	Deck to Deck Hardware	7