

# R35B7437A

## TOP VIEW

ADA ACCESSIBILITY GUIDELINE - ADAAG CONFORMANCE

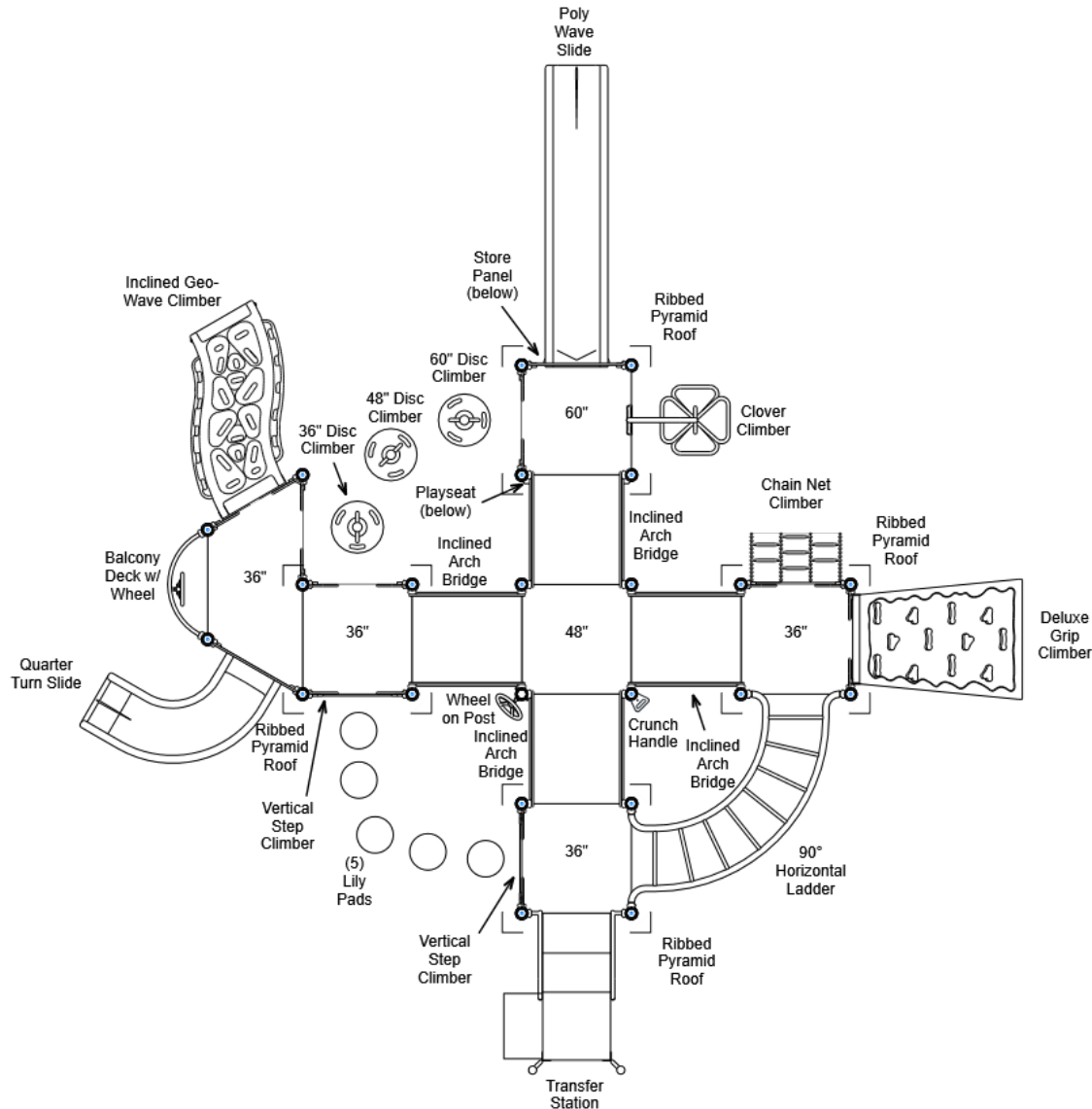
| ELEVATED | ACCESSIBLE | RAMP ACCESSIBLE | GROUND | TYPES |
|----------|------------|-----------------|--------|-------|
| 10       | 10/5       | 0               | 4/3    | 3/3   |



### GENERAL NOTES:

This conceptual plan is based on information provided prior to construction. Detailed site information, including the following, should be obtained, evaluated, and utilized in the final project design. Exact site dimensions, topography, existing utilities, soil conditions and drainage solutions.

**WARNING:** Accessible safety surfacing material is required beneath and around this equipment that has a critical height value (Fall Height) appropriate for the highest accessible part of this equipment. Refer to the CPSC's Handbook For Public Playground Safety, Section 4: Surfacing.



STRUCTURE#: R35B7437A

PROJECT#: R35B7437A

DATE: 7/8/2021 | DRAWN BY: Derick

MIN. USE ZONE: 43' x 45'

PLAYCRAFT REP:

Playcraft Direct, Inc.



# R35B7437A SITE PLAN

ADA ACCESSIBILITY GUIDELINE - ADAAG CONFORMANCE

| ELEVATED | ACCESSIBLE | RAMP ACCESSIBLE | GROUND | TYPES |
|----------|------------|-----------------|--------|-------|
| 10       | 10/5       | 0               | 4/3    | 3/3   |

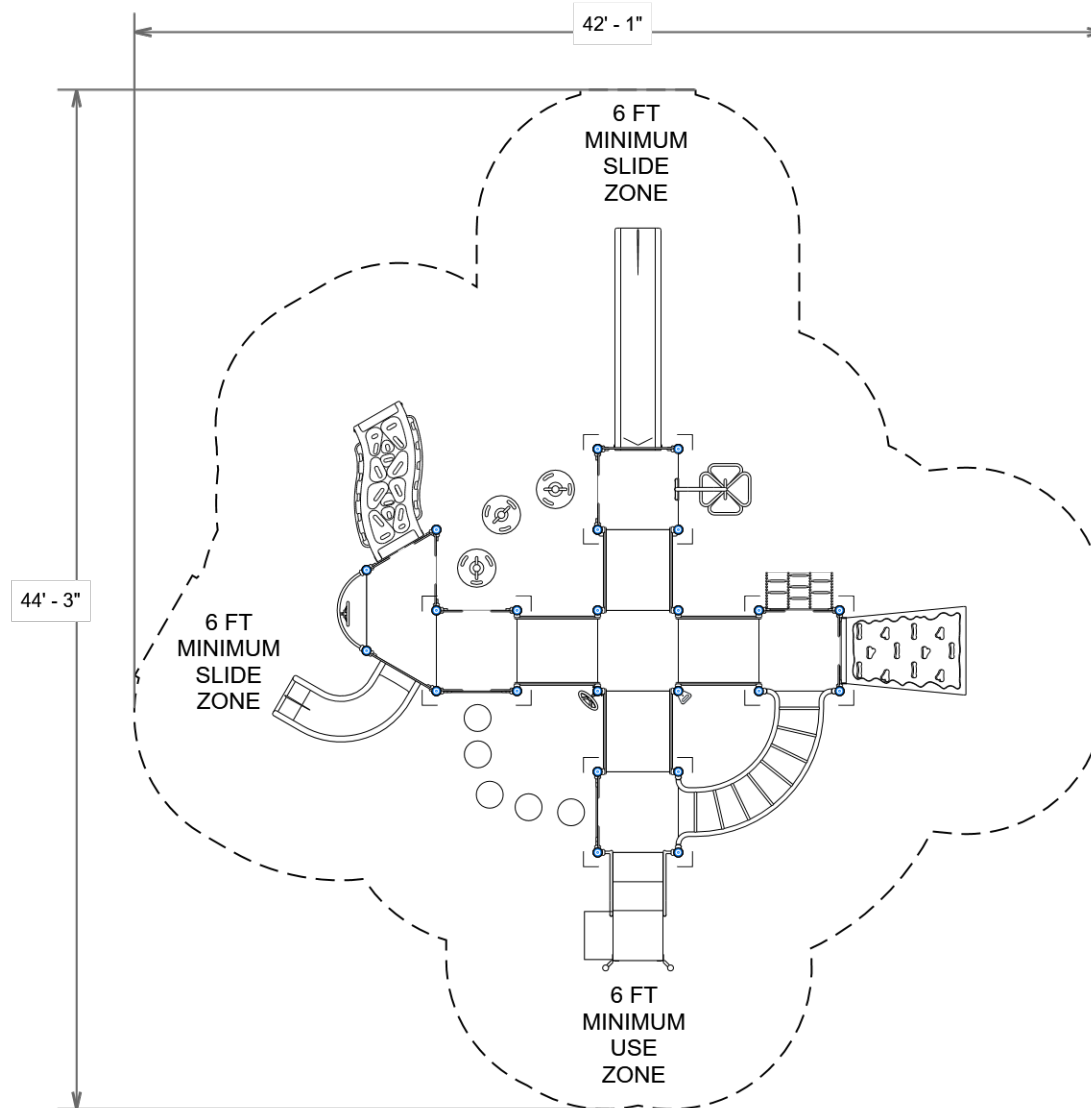


## GENERAL NOTES:

This Preliminary Site Plan is based on measurements that were provided in the initial planning phase. All dimensions must be verified prior to the submission of a purchase order. Playcraft Systems will not be held responsible for any discrepancies between actual dimensions and dimensions submitted in the planning phase.

The Minimum Use Zone for a play structure is based on the product design at the time of proposal. Components and structure designs may be subject to change which may affect dimensions. Therefore, before preparing the site, we strongly recommend obtaining final drawings from the factory (available after the order is placed and included in the Assembly Manual).

**WARNING:** Accessible safety surfacing material is required beneath and around this equipment that has a critical height value (Fall Height) appropriate for the highest accessible part of this equipment. Refer to the CPSC'S Handbook For Public Playground Safety, Section 4: Surfacing.



PROJECT#: R35B7437A

DATE: 7/8/2021 | DRAWN BY: Derick

MIN. USE ZONE: 43' x 45'

PLAYCRAFT REP:

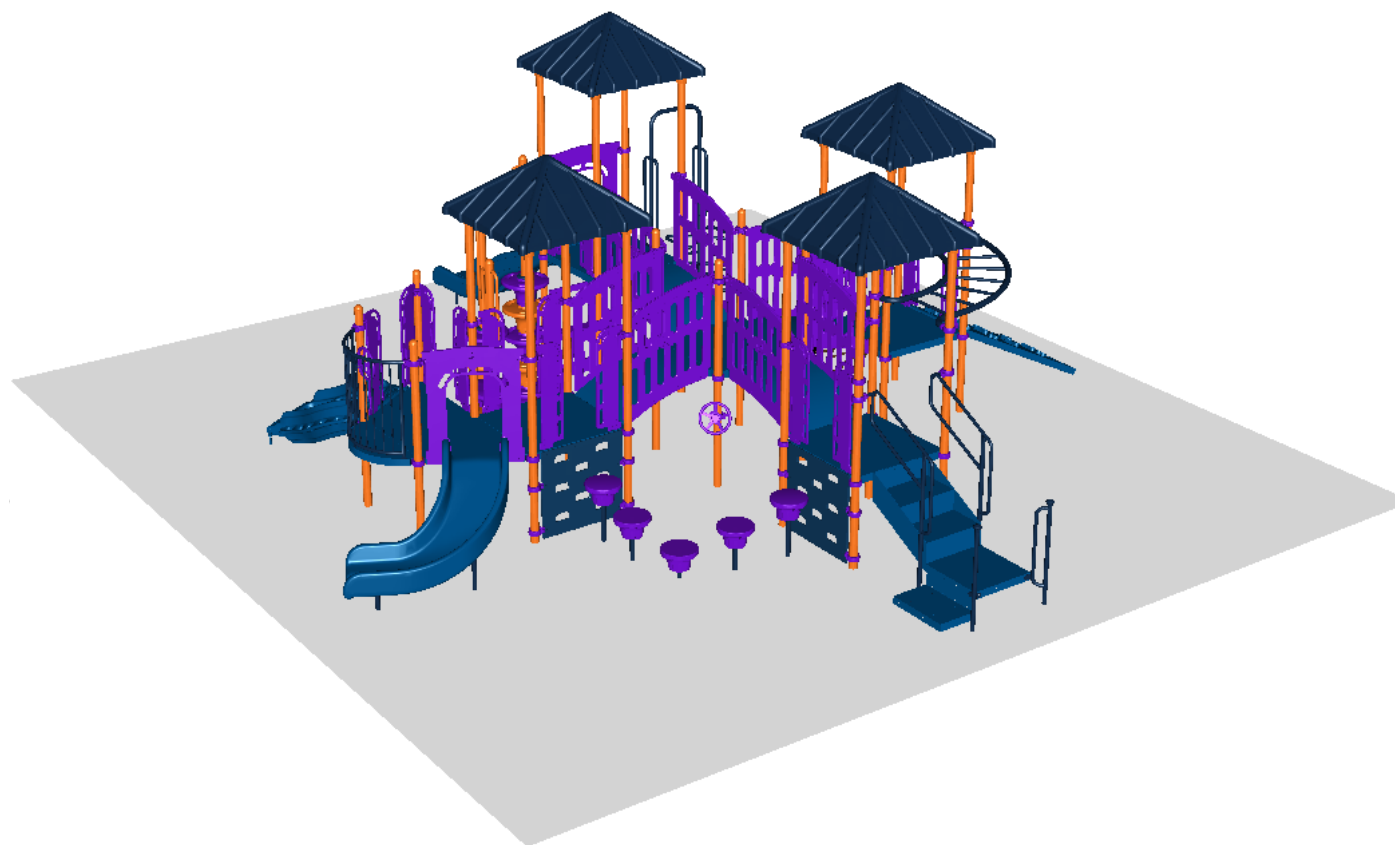
**Playcraft Direct, Inc.**



**R35B7437A**  
**SW VIEW**

**R35**

FOR KIDS  
AGES  
5-12

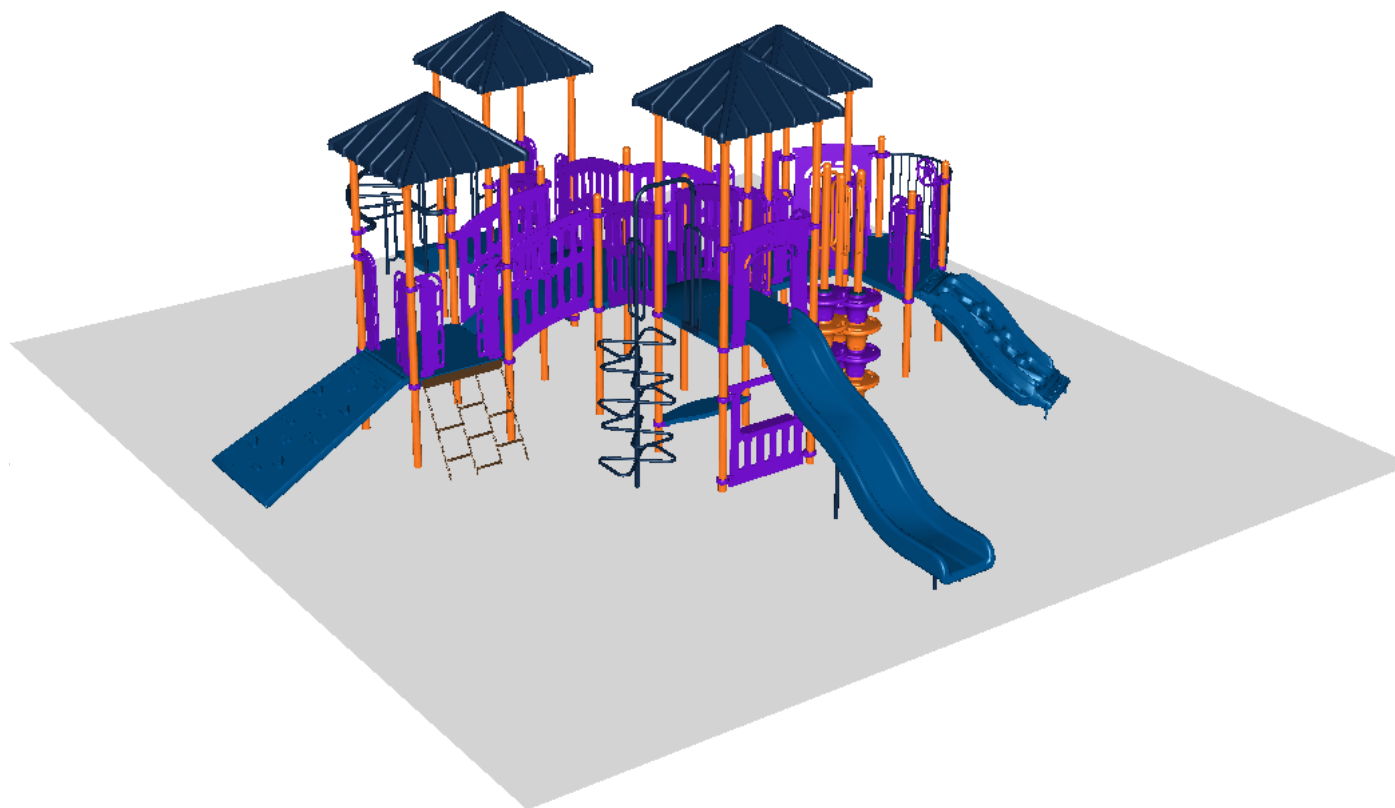


STRUCTURE#: R35B7437A  
PROJECT#: R35B7437A  
DATE: 7/8/2021 | DRAWN BY: Derick

**R35B7437A**  
**NE VIEW**

**R35**

FOR KIDS  
AGES  
5-12



STRUCTURE#: R35B7437A  
PROJECT#: R35B7437A  
DATE: 7/8/2021 | DRAWN BY: Derick



## Bill of Materials

R35B7437A

Project# R35B7437A

7/8/2021

| Item            | Description                                | Quantity |
|-----------------|--------------------------------------------|----------|
| R35B7437A       |                                            |          |
| HS-1004-R35     | Collars                                    | 65       |
| GG-8135         | Dome Cap, R3.5                             | 7        |
| S-1010-R35-10ft | Post, 10ft R3.5                            | 3        |
| S-1011-R35-11ft | Post, 11ft R3.5                            | 4        |
| S-1013-R35-13ft | Post, 13ft R3.5                            | 12       |
| S-1015-R35-15ft | Post, 15ft R3.5                            | 4        |
| S-1101-R35      | Square Deck                                | 5        |
| S-1103-R35      | Hex Deck, Half (5 Post)                    | 1        |
| S-1109-R35-MT   | Balcony Deck w/ Wheel                      | 1        |
| S-1209-24-R35   | Transfer Station, 36in-L                   | 1        |
| S-1212-3R35     | Climber, Vertical Step 30-36in             | 2        |
| S-1216-DLX      | Climber, Deluxe Grip 30-36in               | 1        |
| S-1221-3        | Climber, Chain Net 30-36in                 | 1        |
| S-1230-5R35     | Climber, Clover 54-60in                    | 1        |
| S-1233-3-HW     | Climber, Disc 30-36in (w/ HW)              | 1        |
| S-1233-4-MC     | Climber, Disc 42-48in                      | 1        |
| S-1233-5-HW     | Climber, Disc 54-60in (w/ HW)              | 1        |
| S-1249-DGH      | Climber, Inc. Geo-Wave 30-36in (H, DTG, R) | 1        |
| S-1304-R35      | Single Slide SitDown Wall                  | 2        |
| S-1309-2-R35    | Half Walls (Pair) R35                      | 6        |
| S-1414          | Lily Pad Step 12-18in                      | 3        |
| S-1414-30       | Lily Pad Step 24in                         | 2        |
| S-1429-R35      | Traverse, Horizontal Ladder (90 deg)       | 1        |
| S-1514-R35      | Bridge, Inclined Arch                      | 4        |
| S-1615-R35G     | Store Panel                                | 1        |



## Bill of Materials (continued)

| Item       | Description                   | Quantity |
|------------|-------------------------------|----------|
| S-1704-5   | Slide, Wave 60in (Single)     | 1        |
| S-1705-3   | Slide, Quarter Turn 36in      | 1        |
| S-1802-R35 | Roof, Square Pyramid (Ribbed) | 4        |
| S-1812-R35 | Driver Wheel (Post Mounted)   | 1        |
| S-1937-R35 | Crunch Handle                 | 1        |
| S-1962-R35 | Playseat (Double Post)        | 1        |
| HS-1100-2  | Deck to Deck Hardware         | 2        |