

# R35834EDA TOP VIEW

ADA ACCESSIBILITY GUIDELINE - ADAAG CONFORMANCE

ELEVATED	ACCESSIBLE	RAMP ACCESSIBLE	GROUND	TYPES
17	16/9	0	8/6	4/3

R35

FOR KIDS

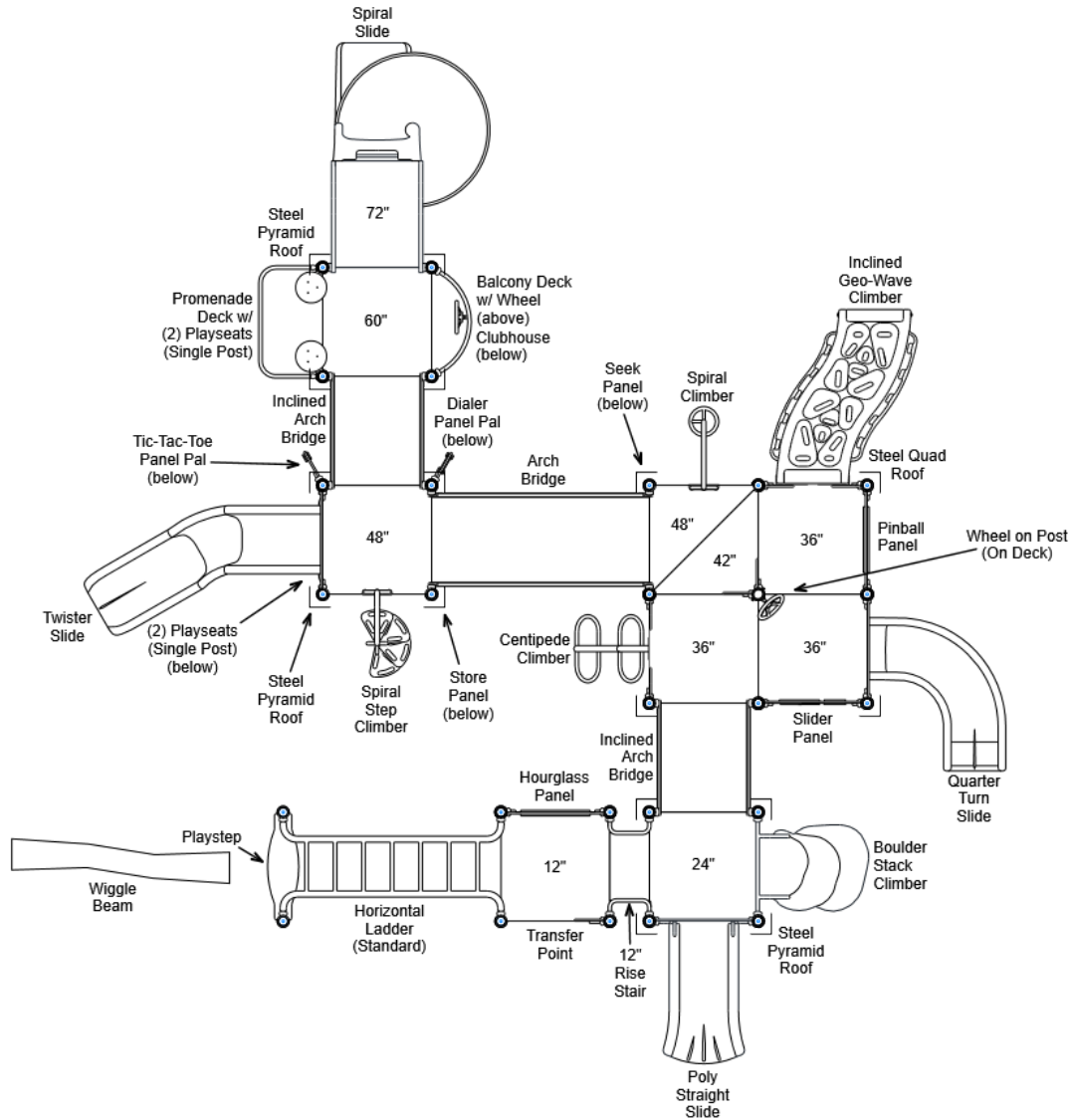
AGES

2-5

## GENERAL NOTES:

This conceptual plan is based on information provided prior to construction. Detailed site information, including the following, should be obtained, evaluated, and utilized in the final project design. Exact site dimensions, topography, existing utilities, soil conditions and drainage solutions.

**WARNING:** Accessible safety surfacing material is required beneath and around this equipment that has a critical height value (Fall Height) appropriate for the highest accessible part of this equipment. Refer to the CPSC'S Handbook For Public Playground Safety, Section 4: Surfacing.



STRUCTURE#: R35834EDA

PROJECT#: R35834EDA

DATE: 12/12/2019 | DRAWN BY: Jefferson

MIN. USE ZONE: 44' x 45'

PLAYCRAFT REP:

**Playcraft Direct, Inc.**



# R35834EDA SITE PLAN

ADA ACCESSIBILITY GUIDELINE - ADAAG CONFORMANCE

ELEVATED	ACCESSIBLE	RAMP ACCESSIBLE	GROUND	TYPES
17	16/9	0	8/6	4/3

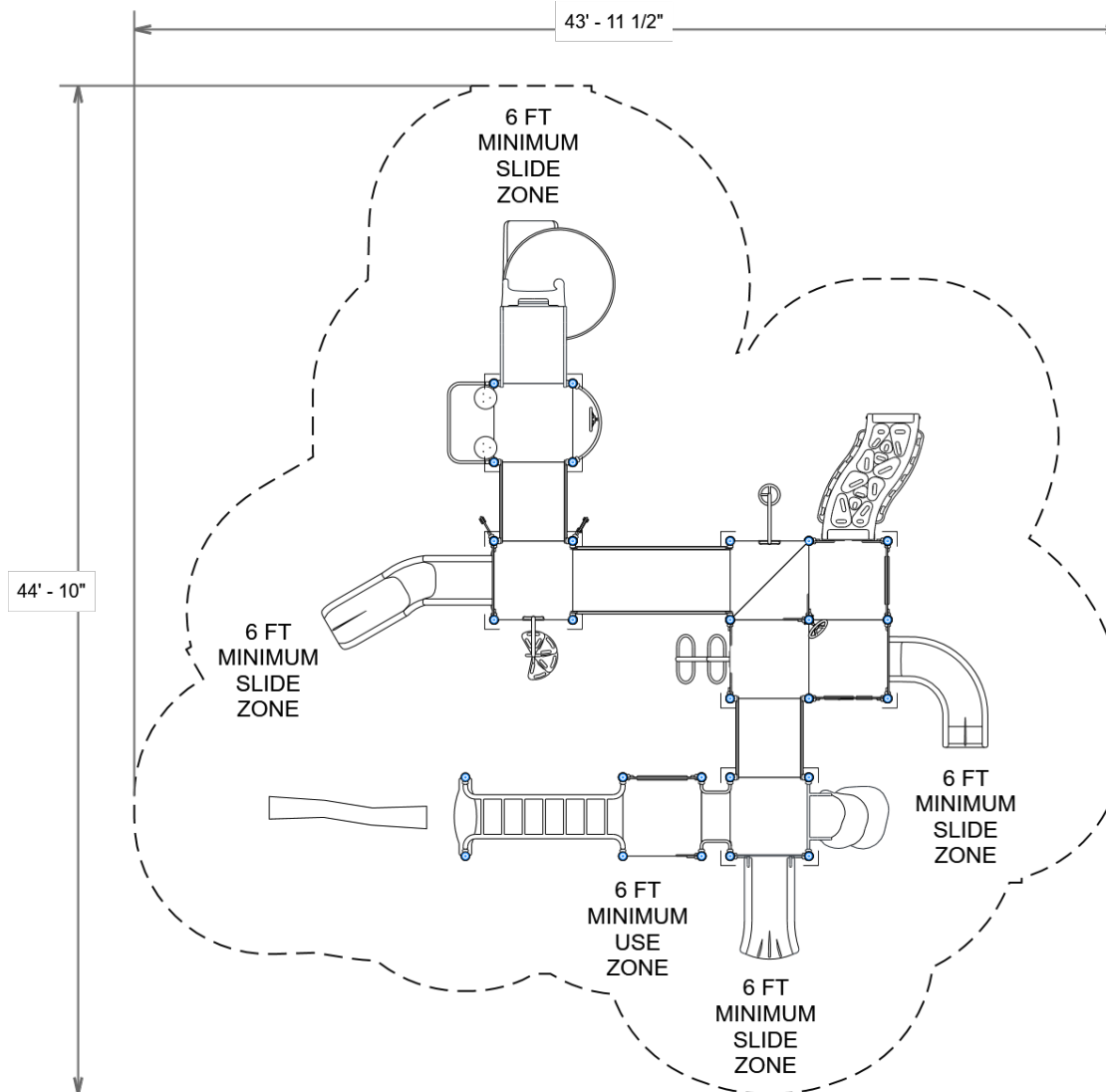


## GENERAL NOTES:

This Preliminary Site Plan is based on measurements that were provided in the initial planning phase. All dimensions must be verified prior to the submission of a purchase order. Playcraft Systems will not be held responsible for any discrepancies between actual dimensions and dimensions submitted in the planning phase.

The Minimum Use Zone for a play structure is based on the product design at the time of proposal. Components and structure designs may be subject to change which may affect dimensions. Therefore, before preparing the site, we strongly recommend obtaining final drawings from the factory (available after the order is placed and included in the Assembly Manual).

**WARNING:** Accessible safety surfacing material is required beneath and around this equipment that has a critical height value (Fall Height) appropriate for the highest accessible part of this equipment. Refer to the CPSC's Handbook For Public Playground Safety, Section 4: Surfacing.



PROJECT#: R35834EDA

DATE: 12/12/2019 | DRAWN BY: Jefferson

MIN. USE ZONE: 44' x 45'

PLAYCRAFT REP:

**Playcraft Direct, Inc.**



**R35834EDA**  
**SW VIEW**

**R35**

FOR KIDS  
AGES  
2-5



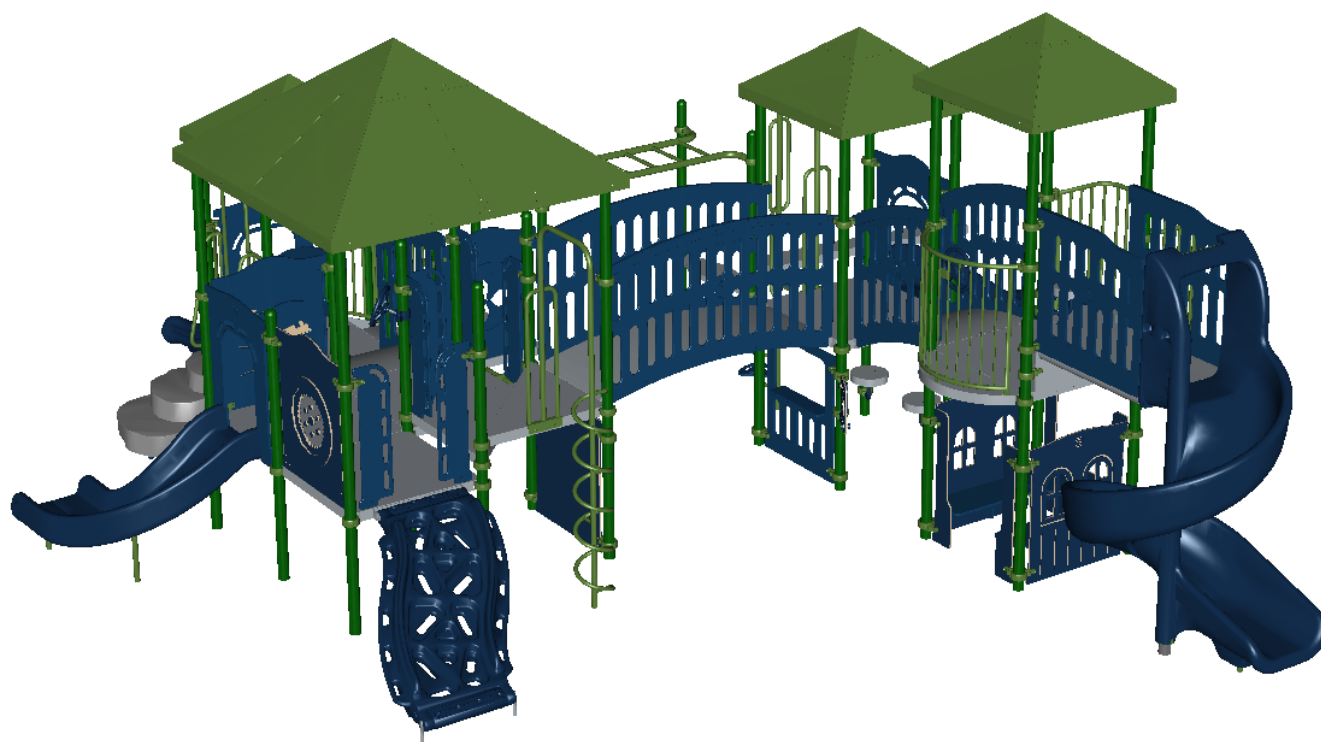
STRUCTURE#: R35834EDA  
PROJECT#: R35834EDA  
DATE: 12/12/2019 | DRAWN BY: Jefferson

**PLAYCRAFT**  
SYSTEMS

**R35834EDA**  
**NE VIEW**

**R35**

FOR KIDS  
AGES  
2-5



STRUCTURE#: R35834EDA  
PROJECT#: R35834EDA  
DATE: 12/12/2019 | DRAWN BY: Jefferson

 **PLAYCRAFT**  
SYSTEMS



## Bill of Materials

R35834EDA

Project# R35834EDA

12/12/2019

Item	Description	Quantity
R35834EDA		
HS-1004-R35	Collars	97
A2-2436-F	Wiggle Beam (Fixed)	1
GG-8135	Dome Cap, R3.5	11
S-1009-R35-09ft	Post, 09ft R3.5	6
S-1010-R35-10ft	Post, 10ft R3.5	2
S-1011-R35-11ft	Post, 11ft R3.5	7
S-1013-R35-13ft	Post, 13ft R3.5	8
S-1015-R35-15ft	Post, 15ft R3.5	4
S-1101-R35	Square Deck	7
S-1105-R35	Half Deck	2
S-1109-LRG-R35	Promenade Deck	1
S-1109-R35-MT	Balcony Deck w/ Wheel	1
S-1206-12R35	ADA Stairs, 12in Rise w/ Walls	1
S-1220-3	Climber, Centipede 30-36in	1
S-1223-4R35	Climber, Spiral 42-48in	1
S-1234-4R35	Climber, Spiral Step 42-48in	1
S-1249-DGH	Climber, Incl. Geo-Wave 30-36in (Horiz, DTG Right)	1
S-1290-D3-R35	Climber, Boulder Stack 18-24in	1
S-1304-R35	Single Slide SitDown Wall	1
S-1309-2-R35	Half Walls (Pair) R35	2
S-1309-R35-L	Half Walls (Single, Left)	1
S-1309-R35-R	Transfer Point (Half Wall - Right)	1
S-1309-R35-R	Half Walls (Single, Right)	1
S-1316-R35	Twister Entry Panel	1
S-1406-84R35	Traverse, Horizontal Ladder (7-Rung)	1



## Bill of Materials (continued)

Item	Description	Quantity
S-1502-R35	Bridge, Arch (84in)	1
S-1514-R35	Bridge, Inclined Arch	2
S-1614-R35	Slider Panel	1
S-1615-R35G	Store Panel	1
S-1618-R35I	Seek Panel	1
S-1630-R35	Hourglass Panel	1
S-1631-R35	Pinball Panel	1
S-1639-R35	Clubhouse (Left)	1
S-1664-R35	Panel Pal, Tic-Tac-Toe	1
S-1665-R35	Panel Pal, Dialer	1
S-1701-2R35V2	Slide, Single 24-30in (Straight)	1
S-1705-3	Slide, Quarter Turn 36in	1
S-1706-12R35	Slide, Spiral 72in (60in Deck Height, 12in Filler)	1
S-1710-4-L	Slide, Twister 48in (L)	1
S-18011-R35	Metal Roof, Quad	1
S-1807-R35STL	Metal Roof, Pyramid	3
S-1812-R35	Driver Wheel (Post Mounted)	1
S-1962-R35	Playseat (Double Post)	1
S-1963-R35	Playseat (Single Post)	4
HS-1100-2	Deck to Deck Hardware	3