

R352F825A TOP VIEW

ADA ACCESSIBILITY GUIDELINE - ADAAG CONFORMANCE

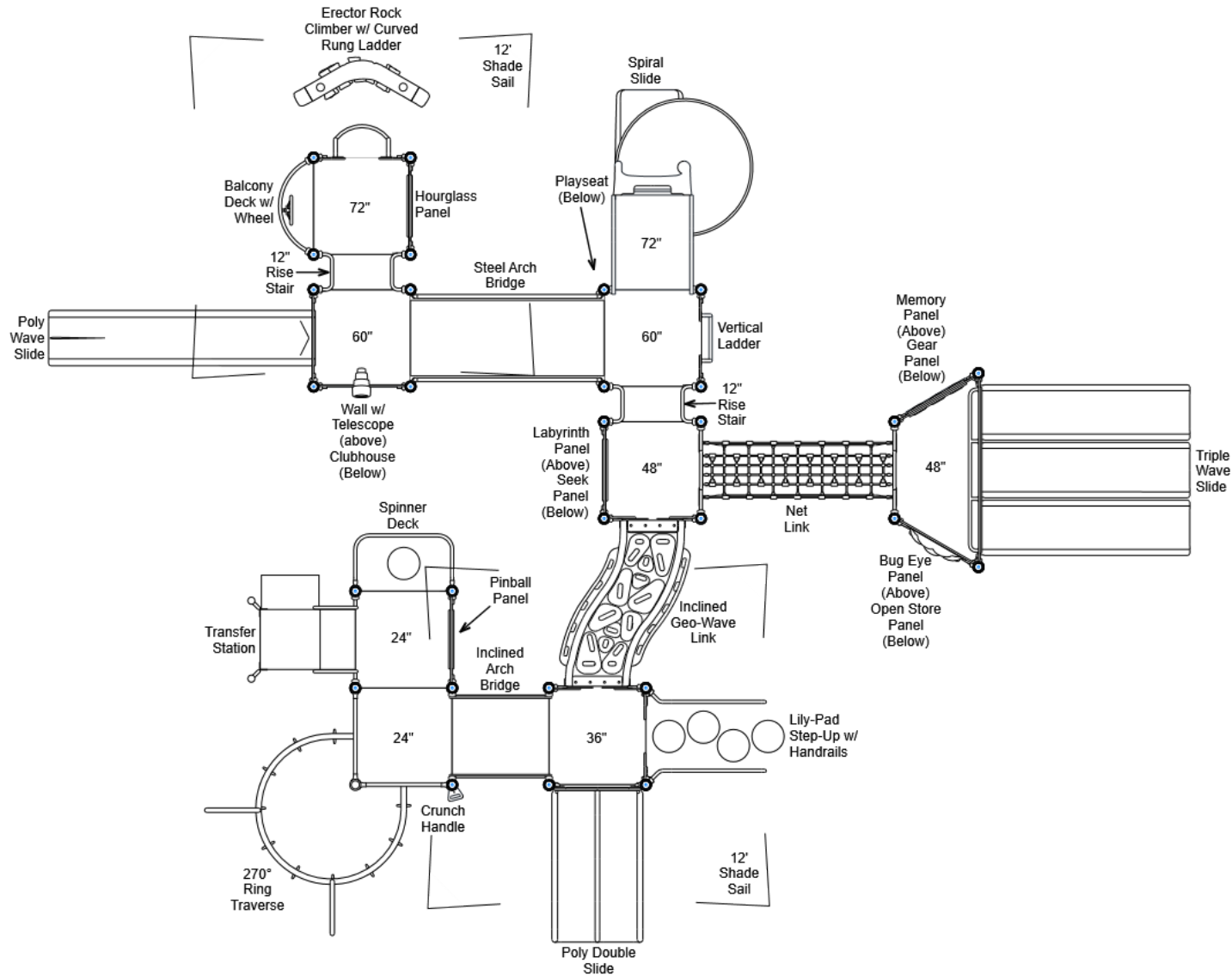
ELEVATED	ACCESSIBLE	RAMP ACCESSIBLE	GROUND	TYPES
17	13/9	0	6/6	4/3



GENERAL NOTES:

This conceptual plan is based on information provided prior to construction. Detailed site information, including the following, should be obtained, evaluated, and utilized in the final project design. Exact site dimensions, topography, existing utilities, soil conditions and drainage solutions.

WARNING: Accessible safety surfacing material is required beneath and around this equipment that has a critical height value (Fall Height) appropriate for the highest accessible part of this equipment. Refer to the CPSC'S Handbook For Public Playground Safety, Section 4: Surfacing.



STRUCTURE#: R352F825A

PROJECT#: R352F825A

DATE: 12/12/2019 | DRAWN BY: Jefferson

MIN. USE ZONE: 54' x 45'

PLAYCRAFT REP:

Playcraft Direct, Inc.



R352F825A SITE PLAN

ADA ACCESSIBILITY GUIDELINE - ADAAG CONFORMANCE

ELEVATED	ACCESSIBLE	RAMP ACCESSIBLE	GROUND	TYPES
17	13/9	0	6/6	4/3

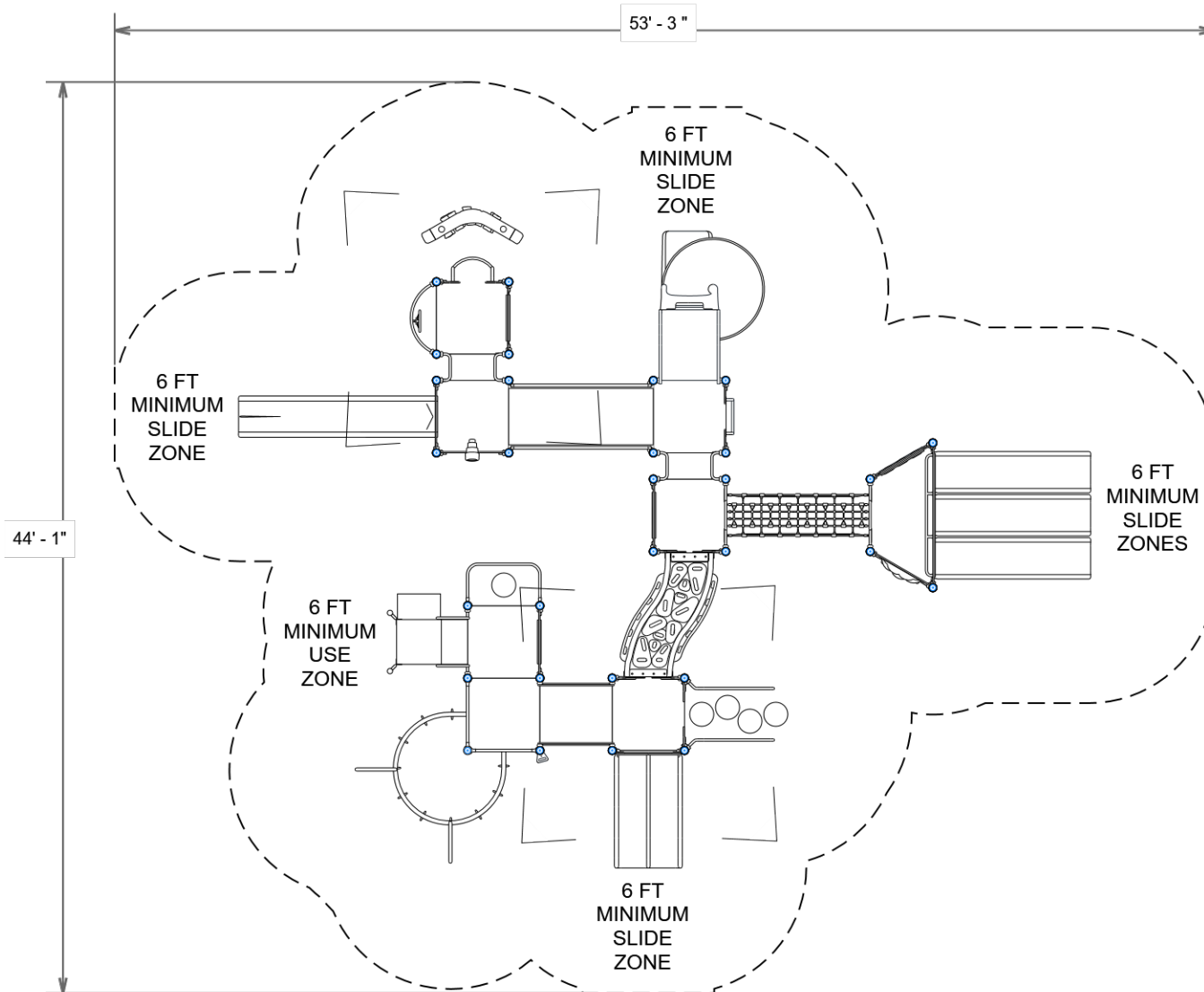


GENERAL NOTES:

This Preliminary Site Plan is based on measurements that were provided in the initial planning phase. All dimensions must be verified prior to the submission of a purchase order. Playcraft Systems will not be held responsible for any discrepancies between actual dimensions and dimensions submitted in the planning phase.

The Minimum Use Zone for a play structure is based on the product design at the time of proposal. Components and structure designs may be subject to change which may affect dimensions. Therefore, before preparing the site, we strongly recommend obtaining final drawings from the factory (available after the order is placed and included in the Assembly Manual).

WARNING: Accessible safety surfacing material is required beneath and around this equipment that has a critical height value (Fall Height) appropriate for the highest accessible part of this equipment. Refer to the CPSC's Handbook For Public Playground Safety, Section 4: Surfacing.



PROJECT#: R352F825A

DATE: 12/12/2019 | DRAWN BY: Jefferson

MIN. USE ZONE: 54' x 45'

PLAYCRAFT REP:

Playcraft Direct, Inc.



R352F825A
SW VIEW

R35

FOR KIDS
AGES
5-12



STRUCTURE#: R352F825A
PROJECT#: R352F825A
DATE: 12/12/2019 | DRAWN BY: Jefferson

PLAYCRAFT
SYSTEMS

R352F825A
NE VIEW

R35

FOR KIDS
AGES
5-12



STRUCTURE#: R352F825A

PROJECT#: R352F825A

DATE: 12/12/2019 | DRAWN BY: Jefferson

PLAYCRAFT
SYSTEMS



Bill of Materials

R352F825A

Project# R352F825A

12/12/2019

Item	Description	Quantity
R352F825A		
HS-1004-R35	Collars	104
GG-8135	Dome Cap, R3.5	22
S-1009-R35-09ft	Post, 09ft R3.5	3
S-1011-R35-11ft	Post, 11ft R3.5	6
S-1012-R35-12ft	Post, 12ft R3.5	9
S-1013-R35-13ft	Post, 13ft R3.5	4
S-1015-R35-15ft	Post, 15ft R3.5	4
S-1017-R35-17ft	Post, 17ft R3.5	4
S-1101-R35	Square Deck	7
S-1106-R35	Hex Deck, Half (4 Post)	1
S-1109-LRG-R35-SPN	Spinner Deck	1
S-1109-R35-MT	Balcony Deck w/ Wheel	1
S-1206-12R35	ADA Stairs, 12in Rise w/ Walls	2
S-1209-12-R35	Transfer Station, 24in-L	1
S-1210-60	Climber, Vertical Ladder 54-60in	1
S-1236-3-1282-6	Climber, Erector Rock Climber 72in	1
S-1249-DDH1R35	Geo-Wave Link 12in (Horiz, Incl. DTD Right)	1
S-1304-R35	Single Slide SitDown Wall	1
S-1309-2-R35	Half Walls (Pair) R35	2
S-1319-4R35	Slide, Triple Wave 48in	1
S-1325-R35	Wall w/ Telescope (2-5)	1
S-1409-270R35	Traverse, Ring (270 Degree)	1
S-1414-3HHR35	Climber, Step-Up 36in (Lily-Pad, w/ Hand Rails)	1
S-1502-R35STL	Bridge, Arch (84in, Steel)	1
S-1514-R35	Bridge, Inclined Arch	1



Item	Description	Quantity
S-1521-R35	Link, Net (84in)	1
S-1608-R35	Memory Panel	1
S-1618-R35G	Seek Panel (Standard)	1
S-1630-R35	Hourglass Panel	1
S-1631-R35	Pinball Panel	1
S-1632-R35	Bug Eye Panel	1
S-1634-R35	Labyrinth Panel	1
S-1639-R35	Clubhouse (Right)	1
S-1644-R35G	Gear Panel	1
S-1645-R35G	Store Panel (Open)	1
S-1702-3R35	Slide, Double 36in	1
S-1704-5	Slide, Wave 60in (Single)	1
S-1706-12R35	Slide, Spiral 72in (60in Deck Height, 12in Filler)	1
S-18027-R3512	Shade Sail, 12ft	2
S-1937-R35	Crunch Handle	1
S-1962-R35	Playseat (Double Post)	1
HS-1007-R35	Extra Hardware	2